



Myerscough College

14-16 Education

Course Prospectus 2021 / 2022



14-16 Courses for pupils in Year 10 & 11

Home Educated Students • Specialist School Provision

School Based Courses and much more!

The North West centre for land-based & sports education
PRESTON • BLACKBURN • LIVERPOOL • WARRINGTON

Getting to know us

Myerscough at a glance	4-6
Myerscough centres	7
Learning resources	8
Study facilities	9
Welfare and support	10
Sporting life	11
Entry requirements/ fees & finance	12
My progression	13
Events & access to courses	14
Schools liaison	15
My 14-16 course	16
My application	17
My directions	18
My bus timetables	19

Subjects

Home Educated Students	20-21
Foundation Learning	22-24
Moving On Project	25
Agriculture	26-27
Animal Studies	28-29
English, Maths or Science	30-31
Equine Studies	32-33
Horticulture & Landscape Construction	34-35
Motor Vehicle Studies	36-37
Photography	38-39
Blackburn	40
Liverpool	41
Warrington	42

www.myerscough.ac.uk

Your comprehensive online information source!

Student Enquiries Line 0800 652 5592
or 'Livechat' via the website

Visit

Myerscough

Course Advice Mornings

Myerscough College hosts a regular series of Advice Mornings throughout the year. If you want to get a feel for the campus, come and have a look around! You'll see what a great place Myerscough is, with so many facilities for your education, leisure and social life!

College staff and tutors will be present to chat about the courses on offer, future career opportunities and the facilities and resources available to students at your chosen centre. They'll also be able to advise about daily transport and financial support.

Advice Mornings are held at our Preston, Blackburn (Witton Park) and Liverpool (Croxteth Park) centres on Saturdays – normally from 10.00am to 12.30pm. These Course Advice Events are held throughout the year (both Virtually and on campus) – please check the 'What's on' section of our website for more details.

Course Enquiry Live Chat and Messenger services are also available on our website or you can call our Student Enquiries Helpline on 0800 652 5592.

Sunday 12th June 2022

Preston Centre Summer Open Day and Country Fair (10.00am–5.00pm) See page 25 for details

Latest News and Information

For all the latest news, student success stories and developments at Myerscough College keep in touch with us.



The main College Facebook page is titled **myerscoughcoll**
The 14-16 Facebook page is titled **myerscoughcollege1416**



The main College Twitter feed is **@myerscoughcoll**

We then have additional subject feeds according to your area of interest. These are highlighted on the individual subject pages in this prospectus.

@My_Animals @My_Equine @My_Motors @My_Sport @My_GreenSpace



My welcome

The College that creates opportunities and makes a real difference to people's lives.

I am delighted that you are interested in finding out more about Myerscough College. Myerscough has a long and proud history of offering excellent education.

Our impressive student results are supported by excellent teaching and learning. To quote Ofsted "Teachers have high aspirations for their learners and use a variety of interesting activities to challenge and motivate them".

Our recent completion of a £35 million investment programme ensures that you have fantastic teaching and social spaces in which to develop.

Myerscough is a great place to study and make new friends with a warm, welcoming and safe campus where you will have the opportunity to develop new skills and participate in a wide range of enrichment and course enhancement activities. Student satisfaction levels are exceptionally high at the College leading to some of the best student retention rates in the country. This is testament to the high quality support and caring approach provided by the Myerscough staff. Class sizes at Myerscough are much smaller than most colleges and as such you will never be lost in the crowd but will receive personalised support to help bring out the very best in you.

Myerscough is a very special place and we hope you come and see for yourself soon.

Very best wishes.

Alison Robinson – Chief Executive and Principal



MAKE US
your
NUMBER
1 CHOICE

Ofsted Inspection
Report, March 2017

Ofsted
raising standards
improving lives

- High quality teaching and learning is the greatest priority for the College.
- Learners benefit from excellent resources.
- Study programmes are implemented highly effectively with high-quality work related activities and purposeful work experience.
- Safeguarding is meticulous. Learners feel safe and understand how to keep themselves safe.
- The curriculum reflects the most up to date working practice.
- Teachers have high aspirations for their learners and use a variety of interesting activities to challenge and motivate them.
- Standards of learners' behaviour are excellent.

Read the full report on the Ofsted website.

My 14-16

Myerscough College has a long tradition of working with schools, demonstrating the rewarding careers within the land-based and sports sectors. The College offers a wide range of ways that schools can work with them to support students of all ages and with a wide range of needs.

This prospectus details the various options available to schools ranging from staff attending school advice events; short courses at college or in school, year long programmes or even in certain circumstances Pre-Access courses.

The College aims to provide a caring and supportive environment for all students, whatever their age or ability. Our fundamental and most important value is to provide the opportunity for every pupil to achieve their potential whatever their background or starting qualification. If you are interested in this area of provision and want to know more please do not hesitate to contact us for further assistance. We think you will enjoy the Myerscough Experience.

Courses

A range of courses are available from the land-based and motor sports sector. Please note that the courses offered differ from centre to centre. Details of what is offered at each centre can be found in this prospectus.

Course fact sheets and further information about the 14-16 programme can be found on the courses link on the menu tab on the college website www.myerscough.ac.uk

14-16 Co-ordinator: Lydia Perry

lperry@myerscough.ac.uk

01995 642222 Ext 2593



Fast-track Your Future

Any pupil successfully completing a course at Myerscough College whilst at school will have the opportunity to progress to a full-time or apprenticeship programme at the College.

Any pupil considering this option will have the chance to talk with course tutors and support staff to ensure appropriate choices are made.

Course Organisation

The majority of courses offered last for one year and are available for learners in years 10 and 11. Year 10 students who successfully complete the course will, in most cases, be offered the opportunity to complete a second year to 'top up' their qualification. Details of the top up qualifications are available within the course information. In most cases year 10 students will be considered for courses first in order to ensure that the top up year remains viable. The majority of courses do however have the capacity for year 11 students as well.

For information regarding the application process please refer to the Myapplication section on page 19.

"Partnership working is outstanding and provides significant benefits to learners, schools, employers and the wider community."

"Particularly effective links with local schools support the delivery of flexible vocational courses for pupils aged 14 to 16, and many progress to FE."
(OFSTED)

My Myerscough

We'll help you make two very big decisions. What to study and where to study it.

No doubt you're looking for a college that's got the perfect mix of enjoyable courses, excellent facilities, a great reputation for teaching and good progression opportunities. But where can you find it all in one place?

95 + %
student
satisfaction
with teaching
and overall
enjoyment in
surveys

You'll find all you're looking for at Myerscough College

Myerscough specialises in education and training for the land-based and sports industries. We teach more than 20 different subjects, many of which might already be hobbies and activities you enjoy doing in your spare time! For example, you can study motorsports, landscape, agriculture, animal care and equine studies. Plus, there's a whole range of other subjects available that will give you the hands on, practical skills that you need to secure the job of your dreams.

Course Visits

Another good reason for studying at Myerscough is the opportunity to visit shows and businesses related to your course areas. Students visit events such as the British Turf Management Exhibition, The Great Yorkshire Show, The Dairy Event and AgriScot, as well as farms, equestrian yards, go-karting tracks etc, linked to the course of study.

Excellent facilities and a new way of learning

Because many of the courses at Myerscough are about getting you ready for the world of work, a lot of your time will be spent acquiring practical skills – either outside in the open air, in purpose-built workshops or in environments which reflect the workplace. This means your learning experience is made more enjoyable, enriching and fun! We also have exceptional learning facilities, including an extensive library and fully resourced computer centre for all your study and IT needs.

Progression to Further Education

One of the great things about Myerscough is that, if you're looking to progress to a Further Education course or apprenticeship at the end of your studies we offer a choice of subjects and levels at each of our centres. We also have a great range of Foundation Degrees and Honours Degrees at our Preston Campus if you are thinking that far ahead.



My campus



Brilliant campus, superb facilities and a great location!

The campus at Myerscough's main centre in Preston is quite simply amazing. Set in 600 hectares of open, green surroundings, Myerscough College offers all the facilities you could need for a great time – a great social life, state-of-the-art sports academies and comfortable, easy-going accommodation.

We've recently invested upwards of £35 million on campus developments, providing new sports and changing facilities, new restaurant facilities, a new Engineering Centre, FFIT agriculture centre, Animal Academy and a dedicated Rural Skills centre.

We've also got excellent facilities at each of our other centres of learning. See the next two pages for more information.

Where we are

Myerscough College's main centre is in a great location, within easy access of many major towns and cities.

Preston	6 miles
Blackpool	15 miles
Lake District	45 miles
Manchester	40 miles
Liverpool	45 miles



My Myerscough Centres

There's a lot more to Myerscough College than just its Preston campus. Myerscough has additional centres of learning across the country.

Croxteth Park Centre

Croxteth Park, Liverpool



Myerscough College Liverpool Centre,
Croxteth Park, Croxteth, Liverpool L12 0HB

Tel: 0151 228 7162

Email: croxteth@myerscough.ac.uk

Croxteth Hall and Country Park provides a fantastic venue for anyone studying in the land-based sector. There is the opportunity to combine the old with the new as students study in the original Hall and Victorian Walled Garden, but also benefit from the state of the art new Animal and Equine Studies Centre and the Arboriculture Centre. The 550 acre County Park provides woodlands, parkland, gardens and a conservation area.

Croxteth is currently offering 14-16 courses in Animal Care.

Warrington Centre

Walton Hall Park, Warrington

Myerscough College Warrington Centre, Walton Hall,
Walton Lea Road, Higher Walton, Warrington WA4 6SN.

Tel: 0800 652 5592 Email: enquiries@myerscough.ac.uk

The College's Centre is set within the newly restored Shippin in the heart of Walton Hall Park, immediately adjacent to the newly refurbished conservatories and glasshouses. Students also have full access to the Zoo, ornamental gardens, extensive parkland and woodland.

Walton Hall is currently offering 14-16 courses in Animal Care and Horticulture.

Witton Park Centre

Witton Park, Blackburn

Myerscough College Blackburn Centre, Witton Park,
Preston Old Road, Blackburn BB2 2TP

Tel: 01254 667166 Email: enquiries@myerscough.ac.uk

 [myerscoughwitton](https://www.facebook.com/myerscoughwitton)

The College's Blackburn Centre is located within the Visitor Centre at Witton Country Park. Set in 480 acres of park and woodland, yet only two miles from the town centre, Witton Park provides the ideal venue for students wishing to undertake a range of courses in Animal Studies and Foundation Learning, supported by computer and library facilities that are linked to the main College campus at Preston.

There are extensive practical facilities on site for animal care and management, with a wide range of companion animals including rabbits and small rodents as well as collections of reptiles, amphibians, fish and invertebrates. A variety of housing is used and students have access to specialist equipment for animal husbandry and a dedicated dog grooming salon.

Students also have opportunities to visit local, animal-based industries such as dog trainers and farms. They will be offered a range of interesting guest speakers throughout the College year.

There are also excellent resources for horticulture and landscape including impressive grounds and plant collections, cultivated areas, glasshouses, potting sheds, a tree nursery and a vast expanse of park and woodland.

Witton Park is currently offering 14-16 courses in Entry Level Animal Care, Agriculture and Horticulture.

**Check
the website
for Advice
Morning
dates**



Naturally, you'll spend a fair amount of your time at Myerscough College studying – so we've made it as enjoyable and productive as possible,

by providing a range of dedicated study facilities, IT access points and user-friendly learning resources to help you get the most from your chosen course!



My learning resources



An excellent library

The user-friendly College library is housed on the ground floor of the modern Learning Resource Centre. The library at Myerscough delivers a dynamic information service through a stock of around 45,000 books and journals along with a comprehensive range of electronic media. A number of local and national newspapers are also available. The College library is known to be one of the best specialist libraries in the country. Library staff are always available to provide expert advice and guidance.

Open seven days a week during term time, and weekdays during holidays, the library has a number of silent study rooms and 100 study places arranged to provide a comfortable and relaxed atmosphere. Fifty-five networked PCs are available for student use along with a series of laptops that can be loaned out to help during assignments and presentations. Printing, photocopying and refreshment facilities are also available.

The College library also has access to VALNOW, the Virtual Academic Library of the North West – part of the UCLan network. This enables tutors and library staff to search around 500,000 items from the University library – from books and photocopies of journal articles to numerous online services – many of which can be delivered to Myerscough for study use. The library also has its own section on the College website which provides remote access to many of our library services.





My study facilities

Computer centre

The College's computer centre is housed on the first floor of the main Fitzherbert Brockholes building. Networked PCs, software and associated printing facilities are continuously updated and enhanced to provide the best service possible. There is access to a range of word processing, spreadsheet, database and graphics packages (on Microsoft Office Professional) along with specialist software related to your chosen subject. Every student has their own College email address, network file space and Office 365 provision – including free Office applications for the duration of their course – along with fast and reliable internet access.

A wireless network provides internet access for laptop, tablet and smartphone users across the campus.

Amazing practical facilities

Regardless of which course you choose you can be certain that you'll have access to some of the best teaching facilities available for your subject. From the Animal Care Centre and International Equestrian Arena to the National Centre for Arboriculture and the Sportsturf Technology Unit, students benefit from using high-quality industry-standard equipment. In fact, take a closer look at the 'Resources' panel in each of the subject sections in the prospectus for a comprehensive list of teaching facilities. It's no wonder so many of our students enjoy their studies and progress to successful careers in their chosen subjects.

Superb laboratories

The College laboratories provide an essential and dynamic service at the centre of the College. They are used to support scientific teaching and learning as well as research in the land-based industries. This ranges from agriculture and horticulture to animal care and veterinary nursing. We are also an official Met. Office Weather Station. A team of friendly, well qualified and experienced technicians and assistants support all teaching and research activities and are always happy to help and advise students who use the facilities.

Academic research

Myerscough College is proud of its commitment to original research. We believe that our teaching and learning should be underpinned by strong research activity. This is undertaken by both lecturing staff and students. The College's research specialisms are 'Sustainable Agriculture and Arboriculture', 'Animal Welfare and Equine Performance', 'Sports Health and Performance' and commercially sponsored trials and investigations.

17 research projects are currently being funded by the College. The College is becoming well known in both government and academic circles for the research work it undertakes, hosting a popular annual research conference to highlight our work. Much of this work is also undertaken in collaboration with other Higher Education Institutions including the University of Central Lancashire, Lancaster University, the University of Manchester and the University of Liverpool.

Here at Myerscough we have an excellent range of support and welfare services to meet your needs. Our advice and guidance team is dedicated to helping you succeed on your chosen course.

My welfare & support

Student life is a lot more than studying and exams! As well as discovering new friends and new experiences, it's a transition period that takes you into a new phase of your life. So, if you find you need any information, advice and guidance along the way, just come and talk to us in The Core! We've got a range of support facilities specifically designed to help you on your journey!



The Core – Student Advice Centre at the Preston campus

Inclusive Learning

Our Inclusive Learning team provides a flexible response to elective Home Educated students, students with disabilities or learning difficulties.

The College can organise a range of support, including:

- **Assistive Technology**
- **Learning Mentors**
- **British Sign Language (BSL) communicators**
- **Study skills support**
- **Exam arrangements**
- **Learning resources**
- **Note-takers and scribes**
- **Specialist Tutors**
- **Inclusive Learning Advisors**

This support is subject to funding availability and EHE students may be asked to provide evidence of this additional requirement.

School students requiring support must have this provided by their home institution.

Counselling

Perhaps you're not in a position to talk to family and friends? You can still discuss any problems with our professional, trained counsellors. Whether it's personal, social or academic, you can talk in confidence to an experienced, caring person who won't judge you, but will listen – and can help you deal with your issues.

Chaplain

Our resident Chaplain is another source of help if you have problems or if you simply need to talk in confidence to someone who'll listen carefully to what's on your mind and what's happening in your life. It doesn't matter what your religious faith is (or even if you have a faith) the Chaplain is here for everyone.

Careers guidance

Your time at Myerscough College is a stepping stone to your future career. If you need some advice and guidance in deciding exactly what you want to do after College, have a word with your course tutor. You will also find a lot of information in the careers section of our library and in the dedicated MyFuture careers section in The Core. Further help is available from our support team in The Core, which has close links with the local Young People's Service.





If sport is your way of relaxing after a hard day's study, we've got a great range of facilities for you.

Myerscough's sports facilities include grass football and rugby pitches, a multi-use 3G pitch, a new High Performance Sports Centre and a separate four-court indoor sports hall with facilities for basketball, five-a-side football, volleyball, tennis, cricket practice and badminton.



My sporting life



The Gymnasium is a fully equipped state-of-the-art facility which includes a wide range of cardiovascular and resistance machines and free weights. The Golf Studios have two Golf Simulators which include golf courses from around the world, an outdoor practice range and a purpose built indoor chipping green. The College also boasts a 9-hole golf course and driving range.

Both the Gymnasium and the Golf Course operate on a membership basis. Students are entitled to a reduced rate for an academic year. Short-term and casual-user packages are also available.

Various classes are organised throughout the year in our dedicated fitness and aerobics studio. These often include karate, tae-kwon-do, spinning, Zumba, Pilates, Dru Yoga, keep fit and circuit training. Many of these are free for students with gym membership.



My entry requirements

My fees and finance

Entry Level

E

Students are aged 14 or over (school year 10) and have interest in practical subject to qualify for an entry level course. The College will work with schools/parents to ensure that appropriate support is provided for students.

Level 1 – Foundation

1

Students are aged 14 or over (school year 10) and have interest in practical subjects. These courses give a practical introduction to a particular subject area. Students must have functional English skills which will be assessed at application.

Level 2 – Intermediate

2

Students are aged 14 or over (school year 10) and have good English skills which will be assessed at application. Some learning areas may require a level of prior experience and knowledge. These courses cover practical skills and relevant background knowledge.

Progressing to Further Education

Don't forget that Myerscough College offers a range of Further Education and Apprenticeship courses for students to progress to when they leave school. All courses have progression routes on to related courses or students can choose to move in to a different college area.

For the majority of students aged 14-16 the fees will be covered by the school they are registered with. In certain cases the school may discuss with parents and guardians either sharing of the fees or parents/ guardians covering the cost of the course. See pages 20-21 for more information on the finance arrangements for home educated students.

As Myerscough is mainly a Further and Higher Education College it is unable to access funding for students of school age (except home educated students). This also applies to support bursaries and fee remission.

Where a student is identified as requiring support whilst at College it is the responsibility of the home school or parents/guardians to arrange this. This is usually provided by the school but in certain circumstances may be purchased from the College.

Where a student uses public transport or a College operated bus service to attend Myerscough then they must pay. Bus passes can be purchased from the Myerscough finance department if students use the College buses.



My progression

Studying at Myerscough College isn't just about head-down learning of the one subject you've chosen as your course – it's about getting a well-rounded education that will prepare you for the world of work – and give you lots of invaluable life skills.

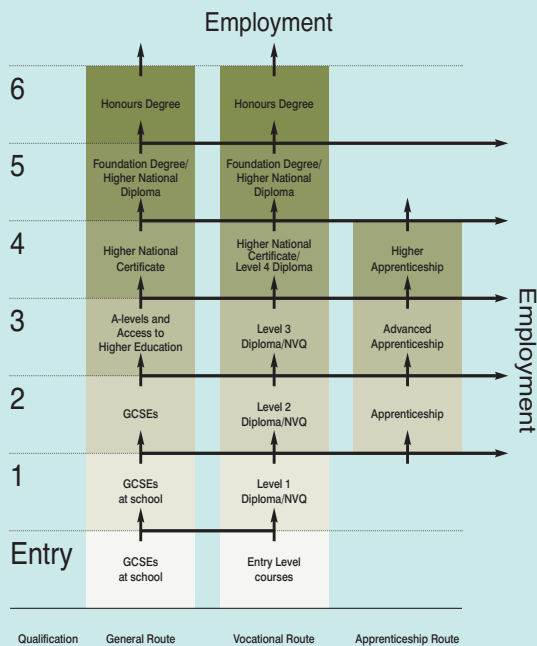
My progression

The great thing about Myerscough College is that you can choose to study at a range of different levels. So whatever qualifications, exam results or experience you've got there will be a course that's just right for you.

Our courses start at entry level and progress to undergraduate degrees, and on to postgraduate study. So, if you enrol on a 14-16 course at Myerscough, you can be sure there is room for you to progress to a higher level of qualification.

Each of the courses listed in this prospectus has its academic 'level' highlighted in the 'Course Details' panel so that you can find the perfect course to meet your needs. Use our career path below to help you plan your route to achievement.

NB: Please note that the course titles used in this prospectus may differ from the titles used on exam certificates at the end of the course. Certificate titles refer to Edexcel or other awarding body course titles, whereas Myerscough course titles aim to reflect the unit choice and course focus.



Progressing to Further Education

Don't forget that Myerscough College also offers Further Education courses, across the majority of our subject areas. With more than 1000 Further Education students at the College, it provides an excellent progression route for successful students to continue their studies.

For further information or to find out more about your choices, request a copy of our Further Education prospectus and course factsheets from Course Enquiries or download copies from the website.

Email: enquiries@myerscough.ac.uk Telephone: 0800 652 5592

Copies of the Further Education prospectus can also be downloaded from the College website.



My open campus events

Campus tours can be arranged for any time with any group of students through the school liaison team (see page 16) however for schools with students interested in accessing the 14-16 programme please contact the 14-16 Office. The events consist of a tour around the campus of interest with a particular focus on any areas that students are considering studying in, a chat about the various options available at 14-16 and then moving into Further Education and a chance to ask any questions regarding the course and the College.

Wherever possible please book campus tours for the week before a formal College Saturday Open Morning (see website for dates) so that students can follow up interest by bringing their parents/guardians/carers to College.



My access to college course

Myerscough's Foundation Learning team has built up an excellent reputation over many years for successfully working with students who have a wide range of learning difficulties and disabilities; helping them fulfil their potential in a safe and supportive environment.

Throughout the 14-16 course pages in this prospectus there are details of entry level courses run within the Foundation Learning team that certain students may be able to access one (or more) day a week these include options in Animal Care, Agriculture and Horticulture.

Myerscough also offers a more flexible approach to schools working with students with a range of needs. Schools are invited to bring in groups of students for a set period each week to study across a range of vocational areas.

The arrangement may be for a term or an entire academic year. The main subjects of interest tend to be Animal Care, Agriculture and Horticulture as these are the areas with the best accessibility for students with limited mobility.

The courses are generally unaccredited and based on student need. Group size is dependent on the individual needs and support requirements of the students, however no more than 8 students can be accommodated per group.

These courses function as an excellent transition to full time college courses at 16 or as enrichment activities for students studying within schools.

For a discussion regarding tailored courses for individual schools please contact the Head of Foundation Learning on **01995 642222 ext. 2526**, email bsherriff@myerscough.ac.uk or the 14-16 Co-ordinator on **ext. 2593** email lperry@myerscough.ac.uk



My schools and Colleges Liaison Team

Welcome to Myerscough College's Schools and Colleges Liaison Team. We aim to raise young people's aspirations and awareness of the opportunities that further and higher education can offer within the land based and sports industries. Our team provides information, advice and guidance to assist students and those supporting them with the decision making process.

Career Events

We are delighted to attend any of your career events to meet and advise students on Further Education, (school leavers), Higher Education (university level) and Apprenticeships. Our resources will illustrate the exciting courses Myerscough College offers in our unique countryside setting.

Assemblies

Our presentation includes a tour of our dynamic courses and unique campus and informs on our inclusive entry conditions. The assembly focus is to empower and motivate students to be open to opportunities, to take action, arrange college visits, meet tutors and complete applications.



Drop-in Consultations

Often hosted during break or lunchtimes that offer students a relaxed, informal environment to chat and learn more about options available to them post 16.

On-site Visits

Myerscough is a unique environment to study and we love nothing more than to show students our stunning grounds, state of the art resources and magnificent outdoor facilities. You are very welcome to join us for a tour, if your students have a specific interest then please let us know. We also have virtual packages available upon request.

Schools Team Contact Details

Nick Harrison – Schools and Colleges Liaison Co-ordinator.

01995 642167

NHarrison@myerscough.ac.uk

Amelia Bibby – Schools and Colleges Liaison Officer, Bilsborrow Preston.

01995 642310

abibby@myerscough.ac.uk

Angela Hey – Schools and Colleges Liaison Officer, Bilsborrow Preston.

ahey@myerscough.ac.uk

Paul Ryan – Schools and Colleges Liaison Officer, Croxteth Liverpool.

0151 541 4077 Ext: 2412.

Telephone

Team Office Preston – **01995 642310/2341.**

My 14-16 course

Course Organisation

The majority of courses offered last for one year and are available for learners in Years 10 and 11. Year 10 students who successfully complete the course will, in most cases, be offered the opportunity to complete a second year to 'top up' their qualification. Details of the top up qualifications are available within the course information. In most cases Year 10 students will be considered for courses first, in order to ensure that the top up year remains viable. The majority of courses do however have the capacity for Year 11 students as well. For information regarding the application process please refer to the Myapplication section on page 19.

Costs

Prices are based on a 33 week year. Certain top up courses only run for 31 weeks in Year 11 to allow time for GCSE exams. For more information about course fees please contact: The 14-16 Team on **01995 642222 ext. 2593** or email us at **14-16@myerscough.ac.uk**

Additional costs may be incurred for extra off-site delivery, smaller group sizes or additional equipment and teaching requirements.

Additional Support and/or Learning Support Assistants

If a pupil has additional support at school, the school must provide this support whilst the pupil is at College. Schools sending large groups of students must be supervised by a member of school staff. Support may be available for Home Educated students although evidence of need may be required.

Lunchtime Arrangements

Pupils may bring their own packed lunches or purchase meals from any of the College catering outlets. Pupils must stay on campus during breaks and lunchtimes. If a pupil is entitled to free school meals the school must make appropriate arrangements with the 14-16 Office.

Transport

Arrangements for the transport of pupils to and from College is the responsibility of the school/parent.

No supervision is available for pupils after classes have finished or inbetween lessons. If students are catching College buses they need to be aware that these may not run the full length of the school term. A free shuttle bus is provided from the Preston campus to the service bus stop on the A6.

Maintaining Contact with Schools

Throughout a pupil's time at the College, contact is maintained with the schools to inform of progress, attendance and behaviour. The College actively encourages regular dialogue with each participating school or co-ordinating body and both are welcome to contact the 14-16 Team to discuss any aspect of the 14-16 provision at the College.

Myerscough College 14-16 Contact

The 14-16 Team Tel: **01995 642222 ext. 2593**
14-16@myerscough.ac.uk

Safeguarding

Myerscough College and its partner schools are fully committed to the 'Safeguarding' / Every Child Matters (ECM) agenda. All organisations are fully aware of their roles and responsibilities working with children, young people and vulnerable adults. All staff are aware of their roles and responsibilities and will follow appropriate guidelines, policies and procedures.

For more information on Myerscough's Safeguarding/Risk Assessment procedure please contact Lisa Hartley on **01995 642222** or **lhartley@myerscough.ac.uk**

DISCLAIMER

All courses are subject to sufficient levels of recruitment in order to run. This prospectus was compiled in January 2021 and every care has been taken to ensure that the information contained herein is accurate at the time of printing, but the course programme is subject to continuing development and changes of circumstances may necessitate cancellation of courses or alteration to the programme of courses, course location, fees and other matters.

My application

Making your application couldn't be easier! We'd love to have you as a student here at Myerscough College, so we'll do all we can to encourage you to join us. We'll provide you with any advice and information you need about choosing your course!

Speak to Your School, Parents or Guardians

If you have decided that you would like to apply for a Myerscough course during years 10 and 11 then the first thing you need to do is speak to your school. The 14-16 team can sometimes advise you on the member of staff within your school who deals with college courses otherwise your Head of Year is always a good point of contact. You need to be ready to provide information like the course day, the course level and title and the cost. This information can be found later on in this prospectus. If you do not attend a school then you need to discuss the course with your parents or guardians. The 14-16 team are always happy to speak to you, your parents/guardians and your school so just give us a ring on **01995 642222 ext. 2593** or email **14-16@myerscough.ac.uk**

Apply Online

Our online application system is the fastest way to make your application. If you have permission off your school or Home Educating Parent or Guardian then you can start this process. To start the application process simply visit the Myerscough website, click on the **14-16 tab** at the top of the homepage, and then click your subject area and chosen course. You'll see the **Apply** button on the factsheet. Please ensure that you fully complete all sections of the form. Applications can be delayed as a result of missing or incomplete information. In order for us to process your application you must also complete Part B of the application form, as well as submit any further appropriate evidence regarding learning needs.

Home Educating Parents should complete this form themselves, or this must be completed by the School if the Learner is registered with one. Please ensure that you have signed the confirmation of Home Education/ Confirmation of Funding at the end of Part B Application.

Applications cannot be processed without both parts of the application form.

Attend an interview and a guided tour

We will generally invite applicants to attend an interview at the College. This will include a tour of the College's practical, teaching and support facilities. It also gives you an opportunity to meet the course tutor to discuss the course content, your career ambitions and any specific learning support requirements that you might have.

Apply early

Most of our courses are very popular and fill up quickly. Please submit your application as soon as possible. Students will be interviewed on a first come first served basis for available places.

What happens next?

The following gives a brief guide to the steps involved in your application being processed.

1. Your application is received and an acknowledgement letter sent out to you. The admissions tutor within your chosen subject area will review and assess your application.
2. You will be invited to attend an informal interview. If you attend school then you will need to discuss with your teachers who will be responsible for bringing you to College.
3. Once you have received an offer you will be able to access a wide range of College resources on your individual 'MyPage' section of the College website. This 'one-stop shop' enables you to – amongst other things – accept your offer, complete your consent and indemnity form and order clothing.
4. Students start College in September.

My directions

Centrally situated

Myerscough College's Preston campus is centrally situated in the heart of Lancashire, with great public transport links and dedicated College bus services. Wherever you're coming from, there's easy access so you'll have no trouble in finding us!

Road

The College is just six miles north of Preston (or eight miles south of Lancaster), one mile from the main A6 Preston to Lancaster road – which runs parallel to the M6. What's more, we're only around 10 minutes from either Junction 32 of the M6 (Preston/Blackpool/M55) or Junction 33 (Lancaster South). You'll also be glad to know that there's plenty of free parking space for students on campus. For satellite navigation users our postcode is PR3 0RY, on St Michael's Road, Bilsborrow.

Rail

Preston is the nearest railway station and is well served by national rail links. Preston is on the main west coast London – Glasgow line, with excellent local connections.

For further details, call National Rail Enquiries on 08457 484950 or visit www.nationalrail.co.uk

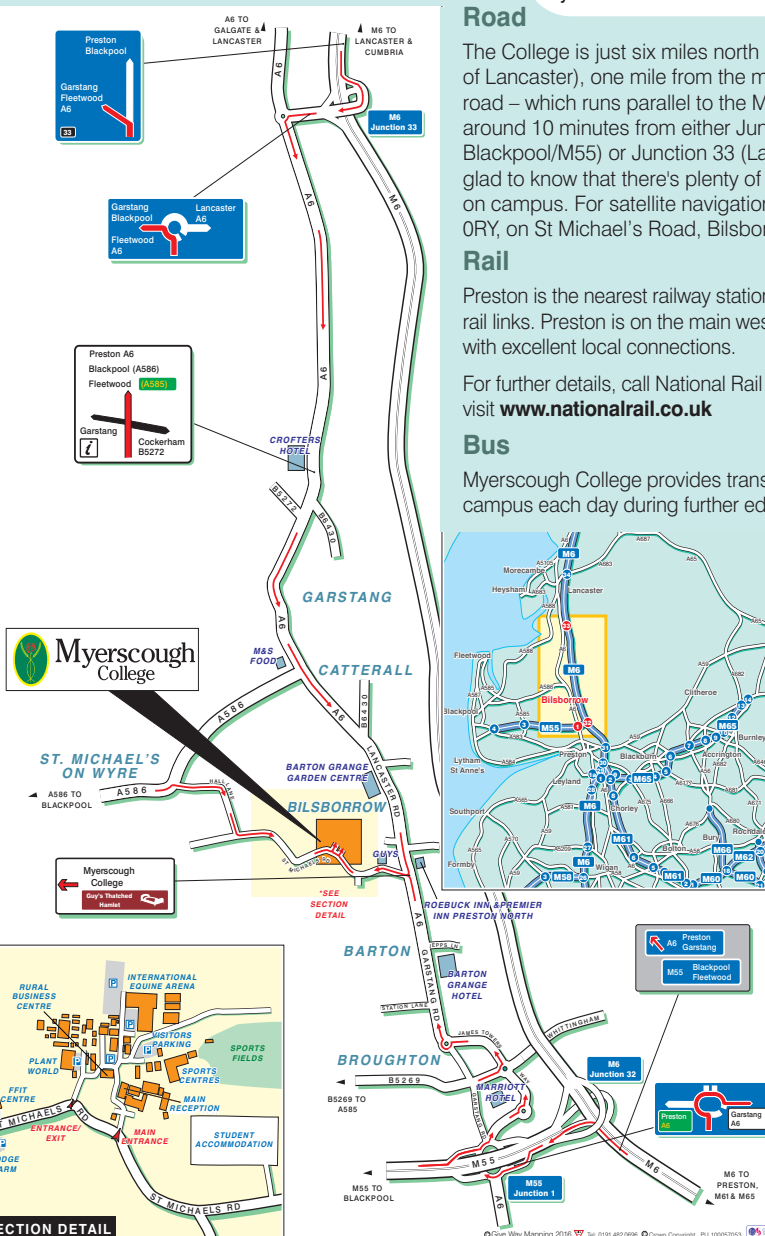
Bus

Myerscough College provides transport to and from the main campus each day during further education term time. Currently

there are eight bus services to the College, from Fleetwood (via Blackpool and Poulton), Burnley (via Accrington and Blackburn), Chorley and Charnock Richard, Clitheroe and the Ribble Valley, Lytham and St Annes (via Warton, Freckleton and Kirkham), Preston bus station and Preston railway station.

Buses also run during the day to Bilsborrow village, for connections to Stagecoach services from Lancaster, Morecambe and Preston bus station (connecting to the Bolton, Horwich, Chorley and Bamber Bridge 125 service).

Buses also run at the Liverpool centre, collecting students from Southport, Ormskirk, Skelmersdale, Rainford, Kirkby, West Derby and Fazakerley.



My bus timetable

From less
than **£1.50**
per day

Many students travel to Myerscough using our great-value daily bus services. Our routes cover much of Lancashire and are outlined below. Return services depart from College at around 5pm. Students can pay for a single trip or purchase a discounted Annual Pass.

Annual 'scholar' passes are also available for Stagecoach services (from Bolton, Horwich, Chorley, Leyland and Southport) to connect with the College service from Preston Bus Station, as well as for service 40/41 (from Lancaster and Morecambe) to Bilsborrow village.

PRESTON BUS STATION

Service
437

Preston Bus Station	0835
Moor Park Ripon Street (+Kings Drive)	0838
Fulwood, Black Bull	0845
Broughton	0849
Barton, Jepps Lane	0855
Myerscough College	0902

PRESTON RAILWAY STATION

Service
433

Preston Railway Station (Fishergate)	0850
Moor Park Gates	0855
Fulwood, Black Bull	0858
Broughton Post Office	0903
Barton, Jepps Lane	0915
Myerscough College	0920

CHARNOCK RICHARD • CHORLEY

Service
125c

Charnock Richard Leeson Avenue	0712
Lower Burgh Way	0718
Chorley Interchange Stand E	0732
Clayton Green opp Pines Hotel/Lidl	0748
Clayton Brook Great Greens Lane	0751
Bamber Bridge Withy Trees	0801
Preston Bus Station Stand 3	0825
Broughton Inn	0851
Myerscough College	0905

BURNLEY • ACCRINGTON • BLACKBURN

Service
852

Queensgate	0715
Burnley Interchange	0720
Huncoat, Griffins Head	0735
Accrington Bus Station (Stand O)	0740
Church, Commercial Hotel	0745
Intack, Accrington Road	0750
Blackburn, Penny Street (Stop C1)	0805
Mellor, Windmill Hotel	0820
Samlesbury, Norman Villas	0825
Broughton	0840
Myerscough College	0845

LYTHAM ST ANNES

Service
853

St Anne's Square	0745
Lytham Square	0800
Warton, Pickwick Tavern	0810
Freckleton War Memorial	0820
Kirkham, Market Square	0830
Windy Harbour Road End	0835
St Michaels (Hall Lane opp. school)	0845
Myerscough College	0850



FLEETWOOD • BLACKPOOL • POULTON

Service
400

Fleetwood, Queen's Terrace	0733
Fleetwood Queens Hotel	0738
Cleveleys Thornton Gate	0746
Cleveleys Victoria Square	0748
Cleveleys North Drive	0752
Cleveleys Central Avenue North	0755
Blackpool Talbot Road, TA1	0810
Thornton, Beechwood Drive	0820
Fleetwood Road/New Lane	0825
Castle Gardens	0830
Poulton Teanlow Centre	0835
Little Eccleston (Blackpool Old Rd)	0845
St Michaels (Hall Lane opp. School)	0855
Myerscough College	0905

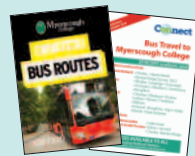
CLITHEROE • RIBBLE VALLEY

Service
995

Clitheroe Interchange	0737
Whalley Bus Station	0748
Milton Three Fishes	0755
Hurst Green Post Office	0801
Knowle Green	0806
Ribchester Black Bull	0811
Longridge Market Place	0818
Goosnargh Stags Head	0825
Myerscough College	0845

The popular 'Number 77A' bus service runs during the day, between College and Preston Bus Station, as does the 401 service to Bilsborrow Village and Brock, to connect with the Stagecoach 40/41 service to Preston and Lancaster.

Informative leaflets which detail the bus routes to the Liverpool and Preston Centres are available to download from the College website.



Home Educated Students

Part Time 14-16 Courses

Age Range: Students should be 14 or 15 on, or before, 31st August of their start year, meaning their one or two year programme leads them directly into post 16 education.

Course Offer: Myerscough offers a wide range of courses which usually run one or two days each week throughout the academic year. These courses are detailed in the 14-16 prospectus. Myerscough courses are open to all students who meet the age and entry criteria regardless of their educational background. This means that students on each course come together to study a common interest but may be based anywhere throughout the Northwest and be educated in a variety of ways at our Centres at Preston, Liverpool, Blackburn and Warrington.

Fees: Funding is provided for Home Educated students accessing the 14-16 programme. Parents/Guardians must fund transport and clothing/equipment fees. If students have additional learning needs these must be discussed with the 14-16 team and if possible appropriate evidence provided. Part time under 16 home educated students are eligible to apply for the majority of bursaries available to post 16 students if they meet the criteria. Support will be calculated on a fractional basis based on the number of days the student attends College.



Pre Access to FE Courses

Age Range: Students must be 15 on or before 31st August of their start year.

Course Offer: In certain circumstances it is beneficial for students to join full time programmes before their 16th birthday. Most Entry and Level One Further Education courses detailed in the prospectus will consider 15 year old students. If they meet the entry criteria students may even be considered for Level Two or Three programmes. Myerscough staff must feel that accessing full time programmes early is the right thing for the individual both from a social and academic point of view. All programmes include Maths and English Language GCSE or equivalent unless the student has already obtained a C/Level 4 or above at GCSE in each subject.

Fees: Funding is provided for Home Educated students accessing full time provision. Parents/Guardians must cover a £30 facilities and resources contribution, transport and clothing/equipment fees. College bursaries and support funds are available to eligible students. Residential accommodation is not available to students until they reach their 16th birthday.

Full Time Courses for Post 16 Students

Age Range: Students must be 16 or over on 31st August of their start year.

Course Offer: Once students reach the statutory school leaving age they are eligible to apply for funded post 16 education in exactly the same way as school leavers. The Further Education School Leavers Prospectus details all available courses. If students with a Home Education background applies then Myerscough tutors are provided with additional support and guidance before interview. This means they understand that some Home Educated students have a non-standard qualification profile and may require additional support and guidance when settling in to College. The College is bound by qualification profiles when making initial course offers however all students undergo an initial assessment programme during the first six weeks of the academic year. Some students may then be moved onto courses which better fit their academic abilities and social needs. The College appreciates that some students who have been Home Educated may require additional academic or social support whilst they settle into College.

Fees: Funding is provided for all students accessing full time provision. Parents/Guardians must cover a £30 facilities and resources contribution, transport and clothing/equipment fees. College bursaries and support funds are available to eligible students.

Foundation Learning

Bringing together skills for everyday living

Preston: Bilsborrow Campus

We provide a range of part time Foundation Learning Study Options for students with a range of additional needs. These may be learning difficulties and disabilities or it may be that a student would benefit from a transition to College in a more closely monitored and supervised environment than is available across other College departments. The Foundation Learning Department can help these students fulfil their potential in a safe and supportive environment. Our aim is to help students develop a range of important skills-social, academic and vocational-while providing the support and encouragement for them to grow in confidence and express their personality.

14-16 students accessing courses in this area join full time students on a part time basis. Due to this learners must demonstrate that they are able to thrive with a Mainstream Post 16 FE setting. These courses can provide a valuable transition period for students aiming to access full time provision in the future. Elective Home Educated students can access the College Inclusive Learning Support however if a student is registered with a school appropriate arrangements for the provision of support must be discussed with their home

Resources

- Dedicated £2.5 million Foundation Learning Centre provides superb teaching opportunities, state-of-the-art facilities and resources to deliver independent living skills.
- Access to the vocational areas of the College to follow a range of practical study programmes.
- Dedicated functional skills workshop to deliver English and maths.
- A range of additional support staff (provided through Inclusive Learning) to assist in all day-to-day situations.
- Variety of 'social enterprise' employment opportunities and work experience.

Myexperience

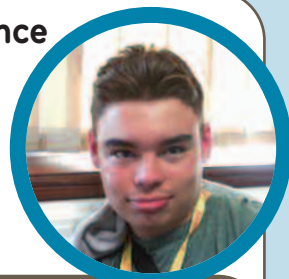
Student Profile

Name: **Elliot**

Age: **16**

Home town:

Poulton-le-Fylde



Elliot enrolled at the College for two days a week in year 10. He joined the Life Skills group with his school support worker and got involved with a wide range of activities including lambing, baking, small animal work and a range of trips. Elliot has returned in Year 11 to study an Entry Level Three Award in Skills for Working Life Animal. During his time at College Elliot has successfully transitioned to a post 16 environment, preparing him to attend to College full time when he leaves school. Elliot has developed into a popular and enthusiastic member of the Foundation Learning Community and benefits from the enrichment his College course provides to his school curriculum.

institution. When offering courses then post 16 opportunities will be considered to ensure clear progression routes are identified. Offers are subject to there being space on the programme.



NPTC Entry Level 2/3 Award in Skills for Working Life – Agriculture

Duration: 1 year

Course Day: Monday/Friday

Course Times: 9.30am – 3.30pm

Location: Preston: Bilsborrow Campus

Cost per pupil: £1077 per annum

School Year: 10 and/or 11



Overview:

This course is very practical in its content and will cover a variety of agricultural skills. Most of the course is practical and based on the College farm but some work will be in a classroom. Units covered include move and prepare animal pens, recognise a healthy farm animal, weigh farm animals and feed young farm animals. This course is suitable for students working at entry level.

Entry Requirements:

Successful interview.

Course Organisation:

Year 10 students who progress well may move onto the Level One Certificate in Agriculture for Year 11 or move from Entry Level 2 to Entry Level 3.

Equipment/Clothing Requirements:

Sensible outdoor clothing. Steel toe capped boots/wellingtons.

Progression Opportunities:

Related Further Education courses.

Assessment Procedures:

Practical and theory assessment.

Group Size: Learners will join full time students.

***NB** – As learners will join a full time student group they will follow the College rather than the school term dates.

NPTC Entry Level 2 / 3 Award in Skills for Working Life – Animal Care

Duration: 1 year

Course Day: TBC

Course Times: 9.30am – 3.30pm

Location: Preston: Bilsborrow Campus

Cost per pupil: £1080 per annum

School Year: 10 and/or 11



Overview:

This course is very practical in its content and will cover a variety of small animal care skills. Most of the course is practical but some work will be in a classroom. Units covered include recognising different small animals, assisting with their feeding, cleaning, grooming, welfare and general health checks. This course is suitable for students working at entry level.

Entry Requirements:

Successful interview.

Course Organisation:

Year 10 students who progress well may move onto the Level One Certificate in Animal Care for Year 11 or move from Entry Level 2 to Entry Level 3.

Equipment/Clothing Requirements:

Sensible outdoor clothing. Steel toe capped boots/wellingtons.

Progression Opportunities:

Related Further Education courses.

Assessment Procedures:

Practical and theory assessment.

Group Size: Learners will join full time students.

***NB** – As learners will join a full time student group they will follow the College rather than the school term dates.

Foundation Learning

Bringing together skills for everyday living

Preston: Bilsborrow Campus

NPTC Entry Level 2/3 Award in
Skills for Working Life – Horticulture

Duration: 1 year

Course Day: TBC

Course Times: 9.30am – 3.30pm

Location: Preston: Bilsborrow Campus

Cost per pupil: £1080 per annum

School Year: 10 and/or 11



Overview:

This course is very practical in its content and will cover a variety of horticultural skills. Most of the course is practical but some work will be in a classroom. Units covered include identifying trees and plants, watering and feeding plants, using appropriate tools and garden maintenance. This course is suitable for students working at entry level.

Entry Requirements:

Successful interview.

Course Organisation:

Year 10 students who progress well may move onto the Level One Certificate in Landscape, Garden Design and Construction for Year 11 or the Entry Level 3 course.

Equipment/Clothing Requirements:

Sensible outdoor clothing. Steel toe capped boots/wellingtons.

Progression Opportunities:

Related Further Education courses.

Assessment Procedures:

Practical and theory assessment.

Group Size: Learners will join full time students.

***NB** – As learners will join a full time student group they will follow the College rather than the school term dates.



Moving On Project

Empowering Young People to Succeed

Preston: Bilsborrow Campus

Moving On Project

Duration Up to 1 year

Course Day: 1-4 days

Course Times: 9.30am – 4.30pm

Start Dates: September and March

Location: Preston: Bilsborrow Campus

School Year: 11

Overview:

This flexible course suits the needs of learners whom have struggled to engage at school. Learners usually attend to study English and maths. Where required learning can be extended to include employability skills, job coaching and a work placement. Learners will be taught within a post 16 environment and supported to achieve the entry requirements for appropriate progression routes.

Entry Requirements

Learners should **not** be in Education Employment or Training. Successful interview.

Course Organisation:

One Day: Edexcel Functional Skills English and Maths Second Day: City and Guilds Level One Award Employability. Option to take a work placement and job coaching on third and fourth day.

Equipment/Clothing Requirements:

Paper, pens, maths equipment, appropriate personal protective / work equipment for placement.

Progression Opportunities:

Traineeship Programme or appropriate Further Education or Apprenticeship.

Assessment Procedures:

Formal Functional Skills Exams,
Ongoing assessment.

Group Size: 10.

Please contact Andrea Gardner:
andrea@myerscough.ac.uk 01995 642143 for further information

The Moving on Project is funded through the European Social Fund and is designed to support learners age 15 to 24 who are Not In Employment, Education or Training. This programme may be suitable for year 11 learners who have barriers to learning which means they are not accessing school and learners 16 – 24 who cannot access further education. This programme is not suitable for learners with significant learning needs or behavioural issues. Learners must be able to access a post 16 environment safely and have enthusiasm to succeed. School learners remain on roll at school.



Agriculture

Staying ahead of the herd

Preston: Bilsborrow Campus

There is currently a significant demand for highly trained and well-educated professionals to enter the agriculture and countryside industry. This demand for skilled staff which has been fuelled by the increasing awareness that food production, farming, tourism, the environment and rural affairs are all interconnected. This has created a need for motivated and technically competent people who understand the requirements of agriculture and its related industries.

The course covers large animals, crops, land management and machinery over the two years. You will learn the theory behind many of the practical skills that are taught and practiced during the course. Thus providing you with the skills necessary to either work within the land-based industry or to move onto a full-time College course.

Resources

- A purpose built Agriculture and Countryside 'Rural Skills' teaching centre with state-of-the-art facilities
- Myerscough Farms (two farms totalling more than 300 hectares of farm and woodland)
- Comprehensive field study equipment, research and laboratory facilities
- Livestock and cereal enterprises (including 220 commercial Holstein dairy cows, 150 dairy heifers, 1000 ewes, 1800 fattening lambs, a beef enterprise and 40 hectares of cereals)
- A brand new £5m Food, Farming, Innovation and Technology Centre
- Off-road driving course for developing skills with tractors, trailers, 4WD vehicles and quadbikes

Myexperience

Student Profile

Name: **Darcie**

Age: **16**

Home town: **Preston**

Course: **Agriculture**



After speaking with staff at Myerscough I knew that this course would be perfect for me as it would allow me to thrive in practical setting.

Being able to actually use the fantastic resources at the College is a massive plus and the fact that I have been able to help and learn on a working farm.

I hope to put the skills I have learned in to a full time career in agriculture in the future.

Myexperience

Student Profile

Name: **Ben**

Age: **16**

Home town: **St Helens**

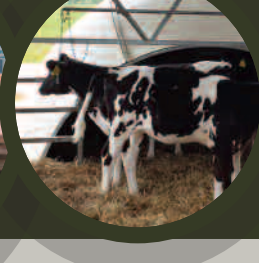
Course: **Agriculture**



Agriculture has always been a great passion for me and I had heard about the 14-16 courses through a friend and was already familiar with Myerscough as my Dad did agriculture here.

The course is great fun but also a great way to learn more about the subject and do practical activities such as tractor operations.

Eventually I hope to work on a farm and feel that this course will help me down that career path.



ABC Level 1 Certificate / Diploma in Land-based Studies – Agriculture

Duration: 1-2 years

Course Day: Wednesday

Course Times: 9.30am – 2.30pm

Location: Preston: Bilsborrow Campus

Cost per pupil: £1059 per annum

School Year: 10 and/or 11



Overview:

This course is a blend of practical and theory sessions and involves plenty of “hands on activities” on the College farm. The course covers large animals, crops, land management and machinery. Pupils must have an interest in the subject.

Entry Requirements:

Successful interview.

Course Organisation:

Students will complete the Certificate in year one and Year 10 students will progress to complete the Diploma in year two.

Equipment/Clothing Requirements:

Sensible outdoor clothing. Steel toe capped boots/wellingtons.

Progression Opportunities:

Related Further Education courses including Agriculture land and wildlife management and agricultural engineering, full time or through an apprenticeship.

Assessment Procedures:

Assignments and practical assessment.

Group Size: 10.



Food and Farming Innovation and Technology (FFIT) Centre

Myerscough College supports the agriculture and food production industries in Lancashire. The Food and Farming Innovation and Technology centre at Lodge Farm is a centre of excellence to develop state-of-the-art precision farming techniques within the livestock and grassland sectors. It also provides resources to support the development of local food products.

The two storey building incorporates specialist teaching, demonstration and research facilities (for cattle and feed), including a Livestock Innovation Centre and the latest grassland equipment, livestock feeding technologies, hybrid tractor power units and crop/field trials equipment.

Animal Studies exploring and investigating the animal kingdom

Preston: Bilborrow Campus

Britain is well regarded as a nation of animal lovers, from companion pets to large animal collections. This has resulted in the development of a multimillion pound industry, ranging from well known national pet feed companies to pet stores, catteries, kennels and numerous other businesses which provide for the needs of animals.

If you care about animals and have a deep interest in their health and wellbeing, Myerscough provides an excellent opportunity for you to further your studies. Working with animals is highly rewarding. It does however require long hours, alongside a genuine passion and dedication.

Our courses cover a wide range of skills, and provide the opportunity to care for companion animals such as dogs, cats, rabbits and ferrets, farm animals and ponies and more exotic species, such as geckos, uromastix, chameleons and a wide range of invertebrates.

Myexperience

Student Profile

Name: **Ruby**

Age: **16**

Home town: **Chorley**

Course: **ABC Animal Care**



As a home educated student, I was informed about Myerscough College through the local officer for Lancashire County Council and I quickly realised that it would be a great option for me to go along with my home study.

I love animals so this course was perfect for me and I particularly enjoyed getting to groom and cuddle the guinea pigs, feed the reptiles and work with the baby gecko.

The course has given me so much confidence and opened my eyes to many of the different career paths available for when I am older.

Resources

Myerscough is home to a purpose built Animal Studies Centre which houses the following facilities:

- An aquarium of tropical, cold water and marine fish, incorporating amphibians and crustaceans
- A specialised herpetology room housing species from all continents, covering a range of habitats
- Cattery – working in partnership with the Blue Cross
- A block of nine day kennels
- A purpose built Sulcata Tortoise enclosure
- Farmyard animals, including goats, sheep, pigs, geese, turkeys, ducks, Shetland ponies, alpacas and emus
- A fully equipped grooming parlour and canine hydrotherapy unit
- Facilities for trial work and research
- Specialist aviaries housing birds from around the world
- A range of commonly kept and exotic species of rodents (including Gambian pouched rats and sugar gliders)
- Free range poultry paddocks housing a large variety of species
- Specialist area dedicated to rabbits and guinea pigs containing spacious enriched pens with a variety of breeds including British and continental giant rabbits and Peruvian Guinea Pigs
- Ferrets housed in purpose built enclosure with indoor and outdoor runs
- Scottish Wildcat enclosure (part of national conservation programme)



ABC Level 1 Certificate / Diploma in Land-Based Studies – Animal Care

Duration: 1-2 years

Course Day: Wednesday

Course Times: 9.30am – 2.30pm

Location: Preston: Bilsborrow Campus

Cost per pupil: £1059 per annum

School Year: 10 and/or 11



Overview:

This course provides pupils with a practical introduction into the care of a variety of domestic animals. Areas of study will include feeding, cleaning and handling animals. Some time will be spent in the classroom but the majority of time will be spent in the College's purpose built Animal Academy developing practical skills. Pupils must have an interest in the subject and have some prior experience of working with animals.

Entry Requirements:

Successful interview.

Course Organisation:

Students will complete the Certificate in year one and Year 10 students will progress to complete the Diploma in year two.

Equipment/Clothing Requirements:

Waterproof clothing and wellington boots/sensible work boots. Warehouse coat purchased via Animal Care Centre. Files/paper/pens.

Progression Opportunities:

Related Further Education courses or Apprenticeships.

Assessment Procedures:

Assignments and portfolio of evidence of practical skills.

Group Size: 10.



English, Maths and Science

Preston: Bilbsborrow Campus

An understanding of English, Maths or Science is essential in all aspects of life and further study. Myerscough College is offering the opportunity for Home Educated students in years 10 and 11 to study towards a recognised qualification in English, Maths or Science.

Maths and English can be taken alongside a Vocational Programme or as a standalone subject. Science is only available to Learners who have previously achieved a Grade 4 or above in Maths and English, or are working towards this at the College. Students will spend 1 day a week studying Maths and English and 1 day studying Science if eligible.

Due to the limited time available to cover the programme students will be expected to complete further work in their own time guided by resources available on Myerscough's online learning platform.

Myerscough is offering GCSE and Functional Skills programmes in Maths and English. Science is currently only available to study at GCSE Level. When deciding which programme is most appropriate for individual learners Myerscough will take into account a student's age and current learning level as well as social factors such as ability to manage exam pressure. There is the opportunity for movement between the programmes during the first six weeks of the course.

This programme is only available to students who are electively Home Educated. The bespoke programmes are available at Myerscough's Bilbsborrow Campus. There may be the option for Liverpool and Blackburn based students to infill with full time students if they are working at an appropriate level.

Functional Skills English and Maths

1

Duration: 1 year

Course Day: Friday

Course Times: 10.00am – 4.30pm

Location: Preston: Bilbsborrow Campus

Cost per pupil: Centrally funded

School Year: 10 or 11

Overview:

This course is aimed at students who are not ready to undertake a full GCSE programme. This may be due to their age, current academic level or social issues such as anxiety. The programme covers many of the skills needed for students to achieve GCSE's at a later date however allows time for basic concepts to be covered and understood. Functional Skills Learners will complete student led enrichment on Friday PM.

Entry Requirements:

Students must be Home Educated and 14 before the end of August of their start year. Students must be prepared to complete additional study outside of their lesson time. Entry onto this programme can either be alongside a vocational application or as standalone qualification. Students working at below Entry Level 2 or with significant additional needs may be offered the opportunity to join full time English and Maths Foundation learning group in their sessions.

Course Organisation:

Year 10 students who successfully achieve the Level One qualification may if appropriate move onto the GCSE provision for year 11. Students must undertake both courses they cannot select either English or Maths.

Equipment Requirements:

Students require pens, paper, files and a calculator. Access to an internet enabled computer outside of lesson time is essential.

Progression Opportunities:

This qualification is recognised by post 16 providers so can be used when applying for full time courses/apprenticeships.

Assessment Procedure:

These qualifications are assessed through one exam for each subject. Myerscough sets the exam dates based on student progress.

Group Size: 17. This programme will only run subject to appropriate recruitment.

Duration: 1 year**Course Day:** Friday**Course Times:** 10.00am – 4.30pm**Location:** Preston: Bilsborrow Campus**Cost per pupil:** Centrally funded**School Year:** 10 or 11**Overview:**

This programme is designed to allow students to complete GCSE English Language and Maths before entering post 16 education. Students follow the Pearson Edexcel Specification.

Entry Requirements:

Students must be Home Educated and working at a level where they are likely to be able to achieve a GCSE qualification at the end of one academic year. As well as age and academic level the ability for students to manage the pressure of full GCSE exams will also be considered. Students must be prepared to complete additional study outside of their lesson time. Entry onto this programme can either be alongside a vocational application or as standalone qualification.

Course Organisation:

Students achieving a Level 4 (former C) or above will not need to retake the GCSE subject in post 16 education. Students will be entered for the Foundation Maths paper unless they are assessed at working at a level appropriate for the Higher paper.

Equipment Requirements:

Students require pens, paper, files and a calculator. Access to an internet enabled computer outside of lesson time is essential.

Progression Opportunities:

This qualification is recognised by post 16 providers so can be used when applying for full time courses/apprenticeships.

Assessment Procedure:

The new GCSE programme is graded on a final examination. These exams run in May/June. The English qualification has two final exam papers and a Spoken Language Endorsement which is listed as a separate item on the GCSE certificate. The maths qualification has three final exams.

Group Size: 17. This programme will only run subject to appropriate recruitment.

Duration: 1 year**Course Day:** Thursday**Course Times:** 9.30am – 4.00pm**Location:** Preston: Bilsborrow Campus**Cost per pupil:** Centrally funded**School Year:** 10 or 11**Overview:**

The GCSE Science qualifications enable students to: Develop scientific knowledge and conceptual understanding through the specific disciplines of Biology, Chemistry.

Entry Requirements:

Students must be Home Educated and working at a level where they are likely to be able to achieve a GCSE qualification at the end of one academic year. As well as age and academic level the ability for students to manage the pressure of full GCSE exams will also be considered. Students must be prepared to complete additional study outside of their lesson time. It is assumed the students will have completed a considerable amount of Key Stage 3 science study prior to starting the course.

Entry onto this Programme:

Must have achieved GCSE English Language and Maths at a grade 4 or above or be working towards GCSE Maths and English at the College.

Course Organisation:

Students will be entered for the Foundation Science paper unless they are assessed at working at a level appropriate for the Higher paper.

Equipment Requirements:

Students require pens, paper, files and a calculator. Access to an internet enabled computer outside of lesson time is essential. Students also require a lab coat for science.

Progression Opportunities:

This qualification is recognised by post 16 providers so can be used when applying for full time courses/apprenticeships.

Assessment Procedure:

These qualifications are assessed through one final exam in May/June for each subject.

Group Size: 15. This programme will only run subject to appropriate recruitment.

Equine Studies

On course for an equestrian career

Preston: Bilborrow Campus

The equine industry in the United Kingdom is expanding rapidly, with a turnover approaching £4.5 billion per year.

It encompasses many different sectors, from racing, driving and endurance to dressage, horse trials and show jumping. These areas are supported by a large ancillary industry and leisure market which provides extensive career opportunities.

The equine department at Myerscough College has excellent resources. A busy equestrian centre runs affiliated and unaffiliated events as well as being a training and examination centre for British Horse Society qualifications.

Myerscough is well known as one of the leading equine colleges in Britain. The facilities and expert knowledge of the tutors provide an ideal learning environment. The lecturing staff are active in the equine industry, competing and training outside College.

Myexperience

Student Profile

Name: **Abdal**

Age: **15**

Home town: **Blackburn**

Course: **Equine**



I have been around horses since I was 3 and have good riding experience so when a friend suggested this course to me, I knew it was the right one.

The practical experience you get at Myerscough is outstanding as the facilities are excellent for equine studies.

I aim to continue with my equine education with a view to eventually instructing and then opening my own yard.

Resources

- International Arena (85m x 30m) with a heated gallery for 400 spectators
- Indoor school (66m x 20m) with a viewing gallery for 200 spectators
- Two outdoor schools (20m x 60m and 45m x 65m)
- 50+ quality horses on site, of various sizes, breeds and standards, stabled in four professional and friendly yards
- Extensive show jumps
- Cross country fences and horse walker
- GPS heart rate monitors
- Weighbridge and a well-stocked tack shop
- Two dimensional motion analysis software (Quintic and Hu-man) with high speed video camera
- A range of laboratories
- Youngstock and specialist youngstock housing
- Equissage equine specialist motorised massage sets and Zamar therapy
- Anatomical demonstration models
- Coldwater therapy spa and solarium



NPTC Level 1 Certificate / Diploma in Land-based Studies – Horse Care

Duration: 1-2 years

Course Day: Wednesday

Course Times: 9.30am – 2.30pm

Location: Preston: Bilsborrow Campus

Cost per pupil: £1057 per annum

School Year: 10 and/or 11

1

Overview:

This course is very practical in its content and will include units on feeding and watering horses, horse health, caring for horses and exercising horses. Most of the course is based on the equine stable yard but some work will be in a classroom. Pupils must have a strong interest in looking after and caring for horses. The riding of College horses is subject to ability and experience.

Entry Requirements:

Successful interview. This course is unsuitable for very novice riders/handlers.

Course Organisation:

Students will complete the Certificate in year one and Year 10 students will progress to complete the Diploma in year two.

Equipment/Clothing Requirements:

Black or navy jodhpurs and sweatshirt.
Dark jacket. Long or short riding boots.
Approved riding hat. Gloves and short whip.
Body protector (only required if riding). Pen, folder and paper.

Progression Opportunities:

Related Further Education courses
or Apprenticeship.

Assessment Procedures:

Multiple choice exam, assignments and portfolio of evidence of practical skills.

Group Size: 12.



Horticulture & Landscape Construction

Shaping the future of the land

Preston: Bilborrow Campus

The Horticulture and Landscape construction industries are currently experiencing strong growth. Career opportunities are widely available and varied. According to the Royal Horticultural Society the horticulture industry is the largest employer in the UK, supplying 18 million gardeners. It is estimated that the landscape industry is made up of nearly 8,000 businesses employing approximately 140,000 people.

Students completing courses in this area will have the basic skills and knowledge to go onto careers in the horticulture, landscape, sportsturf or construction industries. Potential employers include local authority departments, parks and gardens; domestic and commercial landscape companies, garden centres, sporting venues, private gardens and grounds maintenance contractors. Students can also go on to specialise in one of the construction trades such as building, joinery or plumbing.

Resources

- Extensive plant collection
- Five hectares of ornamental features and landscaped gardens
- A range of display greenhouses featuring four different environmental regimes
- A dedicated nursery stock production unit
- Commercial plant centre
- An extensive area of woodland
- A purpose build teaching unit comprising four fully equipped landscape and construction workshops
- A wide range of maintenance equipment and tools

Level One Certificate/Diploma in Landscape Garden Design and Construction

1

Duration: 1-2 years

Course Day: Wednesday

Course Times: 9.30am – 2.30pm

Location: Preston: Bilborrow Campus

Cost per pupil: £1057 per annum

School Year: 10 and/or 11

Overview:

This practical course is an ideal first step towards a career in Landscape garden design and Construction, it provides a basic introductory 'hands on' approach. The course will involve hard and soft landscape skills, design and construction. It provides basic skills for progression onto training for a wide range of trades or apprenticeships including horticulture, landscape, arboriculture and sportsturf.

Entry Requirements:

Successful interview.

Course Organisation:

Students will complete the Certificate in year one and Year 10 students will progress to complete the Diploma in year two.

Equipment/Clothing Requirements:

Outdoor work clothes and steel toe capped boots/wellingtons.

Progression Opportunities:

Related Further Education and apprenticeship including horticulture, landscape, arboriculture and sportsturf courses.

Assessment Procedures:

Assignments, assessments and portfolio of evidence of practical skills.

Group Size: 10.



Myexperience

Student Profile

Name: **Cameron**

Age: **16**

Home town: **Preston**

Course: **Level One
Landscape and Construction**



I really enjoy landscaping and it is something I can see myself doing in the future to follow in my father's footsteps.

Working outdoors is fantastic and I particularly enjoyed the flagging sessions on the course.

I have now been accepted on to the Level 2 Horticulture and Landscape course at Myerscough and I can't wait for the next step!

Myexperience

Student Profile

Name: **Aaron**

Age: **15**

Home town: **Preston**

Course: **Level One
Landscape and Construction**

After having Myerscough recommended by a friend, I quickly discovered the landscape and construction course and knew it was the one for me.

Working outdoors is a real bonus and I particularly enjoyed the bricklaying sessions.

My Grandad and Great Grandad were both bricklayers in their time and I can definitely see myself doing something similar in the future.



Motor Vehicle Studies

Kick start your career at the front of the grid

Preston: Bilborrow Campus

The British motorsports industry is recognised as the best in the world with Britons at the heart of a vast range of worldwide motorsport activities. It is a huge industry employing people in businesses from retail performance specialists to preparation companies, with many Formula One and World Rally Teams based in the UK.

Myerscough College has nine motorsport workshops and a number of different competition cars for the continuing development and expansion of motorsport teaching.



Resources

- A comprehensive range of circuit race cars, rally cars and support vehicles
- Nine Motorsport workshops with dedicated areas for competition repair, engine building and special projects
- Engine, gearbox and chassis rigs
- Data analysis monitors
- Specialist diagnostic equipment
- 12 experienced motorsports staff

ABC Level One Award/Certificate in Motor Vehicle

Duration: 1-2 years

Course Day: Wednesday

Course Times: 9.30am – 2.30pm

Location: Preston: Bilborrow Campus

Cost per pupil: £1039 per annum

School Year: 10 and/or 11. Functional Skills Learners will complete an Student led enrichment on Friday PM.



Overview:

This qualification covers a broad range of areas within the subject of motor vehicle maintenance. Modules will include health and safety, fuel and lubrication systems, vehicle electrical systems and routine maintenance.

Entry Requirements:

Successful interview. A keen interest in motorsports.

Course Organisation:

Students will complete the Award in year one and Year 10 students will progress to complete the Certificate in year two.

Equipment/Clothing Requirements:

Overalls and steel toe capped boots (please contact College for the latest standard required).

Progression Opportunities:

Related Further Education courses.

Assessment Procedures:

Ongoing practical assessment and portfolio of evidence.

Group Size: 10.



Myexperience

Student Profile

Name: **James**

Age: **15**

Home town: **Preston**

Course: **Level One
Motor Vehicle**



I've always had an interest in cars and motorbikes and when I found out about the courses at Myerscough I knew straight away they would be right for me.

The course is extremely practical and learning all about the vehicles and working on their engines has been fantastic.

My ultimate aim is to become a mechanic and I feel that this course has given me the first great step towards that.

Myexperience

Student Profile

Name: **Callum**

Age: **15**

Home town: **Preston**

Course: **Level One
Motor Vehicle**

As a 14-16 learner it has been brilliant to be able to do one day a week at Myerscough on the Motor Vehicle course alongside my other subjects at school.

It really is a great complement to the regular courses that school offers and gives me the opportunity to do a course in something I am very interested in.

The practical work on the engines is a real highlight and something I would like to continue with after I leave school.



Photography

Focus on your new career

Preston: Bilborrow Campus

If you enjoy taking photographs and would like to develop your hobby into a career, then Myerscough is the ideal place to achieve that goal. Our picturesque surroundings offer students the chance to develop their photographic skills and share their creative passion.

The photographic industry is currently experiencing unprecedented change with the development of the internet, social media and fragmentation of the traditional workplace. In a recent survey undertaken by the British Photographic Council 73% of professional photographers believed that formal photography qualifications were "essential and valuable". Successful photographers now need to be increasingly flexible in their approach as traditional routes into a photographic career evolve.

Career opportunities in photography are varied – from fashion, commercial, travel, sports and portraiture to education, advertising.

Myexperience

Student Profile

Name: **Mia**

Age: **16**

Home town: **Bolton**

Course: **Photography**



Some friends of mine had done the course in the past as part of their home schooling and they all recommended it to me as I've always been interested in photography.

I've learnt so much at Myerscough about taking photographs but also about different types of photographs from digital to documentary.

I love creative subjects and I can definitely see myself going down that route in the future as I would like to pursue a career in product photography.

Resources

- Picturesque campus ideal for enhancing photographic skills
- A photography dark room, ideal for learning skills and techniques associated with processing and printing of photographic materials
- Professional level camera equipment
- A computer-aided design studio for digital imaging
- Photographic studio
- A professional grade studio lighting system





Level One Award/Certificate Photography

Duration: 1-2 years

Course Day: Wednesday

Course Times: 9.30am – 2.30pm

Location: Preston: Bilsborrow Campus

Cost per pupil: £1018 per annum

School Year: 10 and/or 11



Overview:

This qualification is practical in its nature, exploring aspects such as image capture, digital manipulation and presentation.

Entry Requirements:

Successful interview. A keen interest and enthusiasm in photography.

Course Organisation:

Students will complete the Award in year one and Year 10 students will progress to complete the Certificate in year two.

Equipment/Clothing Requirements:

Camera desirable but not essential, sketch book, pens/pencils, SD card and USB pen drive. Sturdy footwear and warm outdoor clothing.

Progression Opportunities:

Related Further Education courses.

Assessment Procedures:

Assignments, assessments, portfolio building and practical skills.

Group Size: 10.



Blackburn

Witton Park, Blackburn

All courses offered to 14-16 year olds at Blackburn in 2021/22 are as a part time infill with post 16 full time courses. 14-16 students will join identified groups on specific days to access units leading to a qualification. If any course recruits sufficient numbers to run as a bespoke 14-16 programme then this will be considered. Students may be able to access more than one day to build their qualification. These courses will follow the College term dates.

Myerscough can provide some support for Electively Home Educated students with identified needs. Myerscough will work with home school to provide support for school students.



Entry Level 2/3 Award in Skills for Working Life



Duration: 1 year

Course Day: 1-3 days per week

Course Times: 9.30am – 4.30pm

Location: Blackburn: Witton Park

Cost Per Pupil: £1080 based on one day

School Year: 10 or 11

Overview:

Depending on the day accessed, this course contains elements of Small Animal Care, Horticulture and Agriculture and Countryside. The course is very practical in its content. Most of the course is practical and is based in the animal unit or across the Park.

This course is appropriate for students with a range of additional needs or for students requiring a structured transition onto full time programmes. Students should be working at entry levels. Course areas covered and course level is dependent on the individual and the day(s) accessed.

Entry Requirements:

Successful interview.

Course Organisation:

Students will join in with full time student lessons.

Equipment/Clothing Requirements:

Sensible outdoor clothing. Sturdy boots/wellingtons.

Progression Opportunities:

Related Full Time Courses

Assessment Procedures:

Practical assessments. There are no formal examinations.

Liverpool

Croxteth Park

Entry Level 3 Certificate/Diploma Animal Care

Duration: 1-2 years

Course Day: Thursday

Course Times: 9.30am – 2.30pm

Location: Liverpool: Croxteth Park

Cost per pupil: £1047 per annum

School Year: 10 and/or 11



Overview:

This course is very practical in its content and will cover a variety of small animal care skills. The animal care centre at Croxteth is based on the farm within the Country Park and has a vast range of small animals.

Entry Requirements:

Successful interview.

Course Organisation:

Year 10 students who progress well may move onto the second year of the programme. Students may join the course in September or January (if spaces available).

Equipment/Clothing Requirements:

Sensible outdoor clothing. Steel toe capped boots/wellingtons.

Progression Opportunities:

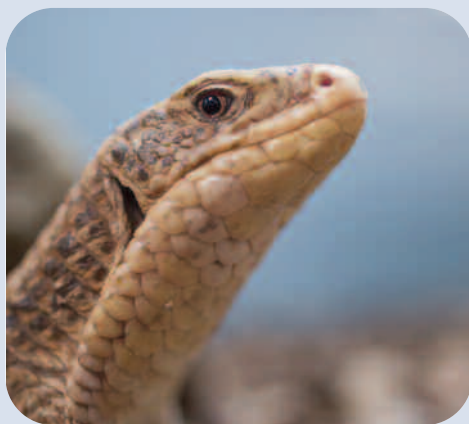
Related Further Education courses.

Assessment Procedures:

Practical and theory assessment.

Group Size: 10.

Credit value: 22.



Warrington

Walton Hall Park

NPTC Entry Level 3 Award/Certificate/ Diploma in Skills for Working Life – Animal Care

Duration: 1-2 years

Course Day: Wednesday

Course Times: 9.30am – 2.30pm

Location: Walton Hall Gardens

Cost per pupil: £1080 per annum

School Year: 10 and/or 11



Overview:

This course is very practical in its content and will cover a variety of small animal care skills. Most of the course is practical but some work will be in a classroom. Units covered include recognising different small animals, assisting with their feeding, cleaning, grooming, welfare and general health checks. This course is suitable for students working at entry level or those looking to progress onto an animal studies programme in FE. .

Entry Requirements:

Successful interview.

Course Organisation:

Year 10 students who progress well may move onto the Entry Level 3 Certificate/Diploma in Animal Care for Year 11. Students may join the course in September or January (if spaces available).

Equipment/Clothing Requirements:

Overalls, waterproof trousers and coat, steel toe capped boots/wellingtons.

Progression Opportunities:

Related Further Education courses.

Assessment Procedures:

Portfolio of work containing practical and theory assessment.

Group Size:

Dependent upon group size the programme it will run as standalone group or infill with other full-time learners. *NB – As learners may join a full-time student group they will follow the College rather than the school term dates.

NPTC Entry Level 3 Award/Certificate/ Diploma in Skills for Working Life – Horticulture

Duration: 1-2 years

Course Day: TBC

Course Times: 9.30am – 2.30pm

Location: Walton Hall Gardens

Cost per pupil: £1080 per annum

School Year: 10 and/or 11



Overview:

This course is very practical in its content and will cover a variety of horticultural skills. Most of the course is practical but some work will be in a classroom. Units covered include identifying trees and plants, watering and feeding plants, using appropriate tools, and garden maintenance. This course is suitable for students working at entry level or those looking to progress onto an animal studies programme in FE.

Entry Requirements:

Successful interview.

Course Organisation:

Year 10 students who progress well may move onto the Entry Level 3 Certificate/Diploma in Horticulture for Year 11. Students may join the course in September or January (if spaces available).

Equipment/Clothing Requirements:

Sensible outdoor clothing, waterproof trousers and coat, steel toe capped boots/wellingtons.

Progression Opportunities:

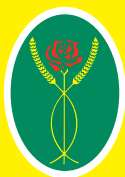
Related Further Education courses.

Assessment Procedures:

Portfolio of work containing practical and theory assessment.

Group Size:

Dependent upon group size the programme it will run as standalone group or infill with other full-time learners *NB – As learners will join a full-time student group they will follow the College rather than the school term dates.



Myerscough
College



Open Day and Country Fair

Sunday 12th June 2022
10.00am - 5.00pm

WYRE TOURISM AWARDS "EVENT OF THE YEAR"

More than 200 exciting attractions

- Motorsport, Machinery and Driving Displays
 - Sports Tournaments & Children's Adventure Activities
 - Animal Academy and Veterinary Nursing Events
 - Equestrian Arena Shows and Demonstrations
 - "Made in Lancashire" Food Fayre
 - Beautiful Gardens, Live Music and Entertainment
 - Uniformed Services – Police, Army, Navy & Air Force
 - Photography and Floral Design Exhibitions
 - Agriculture, Countryside and Conservation Arena
 - Archery, Laser Clay and Air Rifle Shooting
 - The 'Sheep Show' and Falconry Demonstrations*
 - Gundog Scurry and Thwaites Shire Horses*
 - Full Catering, Refreshments and Bar
- ...and many more activities, exhibitors & displays!

**Subject to confirmation*

www.myerscough.ac.uk

for advance booking discounts and preview pages.



Myerscough College, Bilsborrow, Preston. PR3 0RY Telephone: 01995 642222

ACTION PACKED FUN DAY OUT WITH SOMETHING FOR ALL THE FAMILY!

Plus careers and course advice and demonstrations from all our subject areas.

Choose Myerscough

Make us your number one choice!

- £30 million ongoing campus development programme.
- Brand new multi-million pound Equine & Animal Studies Centre at Croxteth Park, Liverpool.
- One of the UK's largest land-based apprenticeship providers.
- Two new Cumbrian Partnerships in Penrith and Barrow in Furness.
- Top four land-based colleges in UK for student achievement.
- Bursary funds to support your learning.
- Awarded prestigious 'Leaders in Diversity' accreditation.
- 95%+ student satisfaction with teaching, guidance and support.
- Superb employment prospects. 98% of students in employment or study six months after graduation.
- National Centre of Excellence in rugby, football, golf, cricket, and basketball with international and Commonwealth Games call-ups for students.
- Winner of the Lancashire Red Rose Awards 'Skills Provider of the Year' for 2018/19 and 'Employer of the Year' finalist 2019/20.
- Quadruple Gold medal winners at Southport Flower Show.



**Myerscough
College**

www.myerscough.ac.uk

Myerscough College,
Bilsborrow, Preston,
Lancashire PR3 0RY
Tel: 01995 642222 Fax: 01995 642333
Email: enquiries@myerscough.ac.uk

Course Enquiries 0800 652 5592