

MyFuture MySuccess MyCollege



14-16 Courses for pupils in Year 10 & 11  
Home Educated Students • Specialist School Provision  
School Based Courses and much more!

The North West centre for land-based & sports education  
PRESTON • BLACKBURN • LIVERPOOL • WARRINGTON

## Getting to know us

Myerscough at a glance	4-6
Myerscough centres	7
Learning resources	8
Study facilities	9
Welfare and support	10
Sporting life	11
Progression	12
Entry requirements	13
Events & access to courses	14
Courses	15
Schools liaison	16
Money matters	17
Study details	18
Applications	19
Directions and College transport	20

## Subjects

Home Education	22-24
Foundation Learning	26-30
Moving On Project	31
Agriculture	32-33
Animal Studies	34-35
English and Maths	36-37
Equine Studies and Horse Care	38-39
Floral Design	40-41
Horticulture & Landscape Construction	42-43
Motor Vehicle Studies	44-45
Photography	46-47
Blackburn	48
Croxteth Park	49-50
Warrington	51

[www.myerscough.ac.uk](http://www.myerscough.ac.uk)  
Your comprehensive online information source!

Student Enquiries Line 0800 652 5592  
or 'Livechat' via the website

# Visit Myerscough

## Course Advice Mornings

Myerscough College hosts a regular series of Advice Mornings throughout the year. If you want to get a feel for the campus, come and have a look around! You'll see what a great place Myerscough is, with so many facilities for your education, leisure and social life!

College staff and tutors will be present to chat about the courses on offer, future career opportunities and the facilities and resources available to students at your chosen centre. They'll also be able to advise about daily transport and financial support.

Advice Mornings are held at our Preston, Blackburn (Witton Park) and Liverpool (Croxteth Park) centres on Saturdays – normally from 10.00am to 12.30pm – and they're scheduled for the following dates at each centre:

Saturday 9th February 2019

Saturday 30th March 2019

Saturday 22nd June 2019

Saturday 7th September 2019

Saturday 5th October 2019

Saturday 9th November 2019

Saturday 7th December 2019

Saturday 8th February 2020

**Sunday 9th June 2019**  
**Sunday 7th June 2020**  
**Preston Centre Summer**  
**Open Day and Country Fair**  
**(10.00am-5.00pm)**  
See page 25 for details


Please check the College website in the run-up to our Advice Mornings to confirm the dates and times.

Students interested in our Bowring Park Centre should attend the Advice Mornings at Croxteth Park.

See the website for details of advice sessions at our Walton Hall (Warrington centre).

## Latest News and Information

For all the latest news, student success stories and developments at Myerscough College keep in touch with us.

 The main College Facebook page is titled **myerscoughcoll**  
The 14-16 Facebook page is titled **myerscoughcollege1416**

 The main College Twitter feed is **@myerscoughcoll**

We then have additional subject feeds according to your area of interest. These are highlighted on the individual subject pages in this prospectus.

@My\_Animals @My\_Equine @My\_Motors @My\_Sport @My\_GreenSpace

# My welcome



The College that creates opportunities and makes a real difference to people's lives.

I am delighted that you are interested in finding out more about Myerscough College. Myerscough has a long and proud history of offering excellent education and training and, in 2019, we will be celebrating our 125th anniversary.

Our last set of published student results placed Myerscough College as the number 1 specialist land based and sports college in the country for student achievement. Our impressive student results are supported by excellent teaching and learning. To quote Ofsted (2017) "Teachers have high aspirations for their learners and use a variety of interesting activities to challenge and motivate them".

Our recent completion of a £35 million investment programme ensures that you have fantastic teaching and social spaces in which to develop.

Myerscough is a great place to study and make new friends with a warm, welcoming and safe campus where you will have the opportunity to develop new skills and participate in a wide range of enrichment and course enhancement activities. Student satisfaction levels are exceptionally high at the College leading to some of the best student retention rates in the country. This is testament to the high quality support and caring approach provided by the Myerscough staff. Class sizes at Myerscough are much smaller than most colleges and as such you will never be lost in the crowd but will receive personalised support to help bring out the very best in you.

Myerscough is a very special place and we hope you come and see for yourself soon.

Very best wishes.

Alison Robinson – Chief Executive and Principal

**TOP 10%**  
of colleges  
for academic  
success



**MAKE US**  
*your*  
**NUMBER 1 CHOICE**

Ofsted Inspection  
Report, March 2017



- High quality teaching and learning is the greatest priority for the College.
- Learners benefit from excellent resources.
- Study programmes are implemented highly effectively with high-quality work related activities and purposeful work experience.
- Safeguarding is meticulous. Learners feel safe and understand how to keep themselves safe.
- The curriculum reflects the most up to date working practice.
- Teachers have high aspirations for their learners and use a variety of interesting activities to challenge and motivate them.
- Standards of learners' behaviour are excellent.

Read the full report on the Ofsted website.



# My 14-16

Myerscough College has a long tradition of working with schools, demonstrating the rewarding careers within the land-based and sports sectors. The College offers a wide range of ways that schools can work with them to support students of all ages and with a wide range of needs.

This prospectus details the various options available to schools ranging from staff attending school advice events; short courses at college or in school, year long programmes or even in certain circumstances full time courses.

The College aims to provide a caring and supportive environment for all students, whatever their age or ability. Our fundamental and most important value is to provide the opportunity for every pupil to achieve their potential whatever their background or starting qualification. If you are interested in this area of provision and want to know more please do not hesitate to contact us for further assistance. We think you will enjoy the Myerscough Experience.

## Courses

A range of courses are available from the land-based and motor sports sector. Please note that the courses offered differ from centre to centre. Details of what is offered at each centre can be found in this prospectus.

Course fact sheets and further information about the 14-16 programme can be found on the courses link on the menu tab on the college website [www.myerscough.ac.uk](http://www.myerscough.ac.uk)

**14-16 Co-ordinator:** Laura Wallace  
[lw Wallace@myerscough.ac.uk](mailto:lw Wallace@myerscough.ac.uk)  
01995 642222 Ext 2593



## Fast-track Your Future

Any pupil successfully completing a course at Myerscough College whilst at school will have the opportunity to progress to a full-time or apprenticeship programme at the College.

Any pupil considering this option will have the chance to talk with course tutors and support staff to ensure appropriate choices are made.

## Course Organisation

The majority of courses offered last for one year and are available for learners in years 10 and 11. Year 10 students who successfully complete the course will, in most cases, be offered the opportunity to complete a second year to 'top up' their qualification. Details of the top up qualifications are available within the course information. In most cases year 10 students will be considered for courses first in order to ensure that the top up year remains viable. The majority of courses do however have the capacity for year 11 students as well.

For information regarding the application process please refer to the Myapplication section on page 19.

*"Partnership working is outstanding and provides significant benefits to learners, schools, employers and the wider community."*

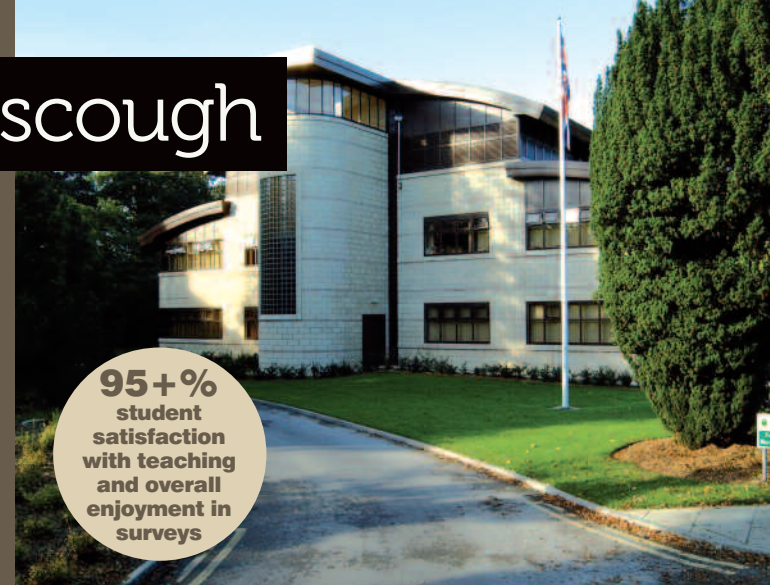
*"Particularly effective links with local schools support the delivery of flexible vocational courses for pupils aged 14 to 16, and many progress to FE."*  
(OFSTED)

# My Myerscough

We'll help you make two very big decisions. What to study and where to study it.

No doubt you're looking for a college that's got the perfect mix of enjoyable courses, excellent facilities, a great reputation for teaching and good progression opportunities. But where can you find it all in one place?

**95+ %  
student  
satisfaction  
with teaching  
and overall  
enjoyment in  
surveys**



## You'll find all you're looking for at Myerscough College

Myerscough specialises in education and training for the land-based and sports industries. We teach more than 20 different subjects, many of which might already be hobbies and activities you enjoy doing in your spare time! For example, you can study motorsports, landscape, agriculture, animal care and equine studies. Plus, there's a whole range of other subjects available that will give you the hands on, practical skills that you need to secure the job of your dreams.

## Course Visits

Another good reason for studying at Myerscough is the opportunity to visit shows and businesses related to your course areas. Students visit events such as the British Turf Management Exhibition, The Great Yorkshire Show, The Dairy Event and AgriScot, as well as farms, equestrian yards, go-karting tracks etc, linked to the course of study.



## Excellent facilities and a new way of learning

Because many of the courses at Myerscough are about getting you ready for the world of work, a lot of your time will be spent acquiring practical skills – either outside in the open air, in purpose-built workshops or in environments which reflect the workplace. This means your learning experience is made more enjoyable, enriching and fun! We also have exceptional learning facilities, including an extensive library and fully resourced computer centre for all your study and IT needs.

## Progression to Further Education

One of the great things about Myerscough is that, if you're looking to progress to a Further Education course or apprenticeship at the end of your studies we offer a choice of subjects and levels at each of our centres. We also have a great range of Foundation Degrees and Honours Degrees at our Preston Campus if you are thinking that far ahead.







# My campus

Brilliant campus, superb facilities and a great location!

The campus at Myerscough's main centre in Preston is quite simply amazing. Set in 600 hectares of open, green surroundings, Myerscough College offers all the facilities you could need for a great time – a great social life, state-of-the-art sports academies and comfortable, easy-going accommodation.

We've recently invested upwards of £35 million on campus developments, providing new sports and changing facilities, new restaurant facilities, a new Engineering Centre, FFIT agriculture centre, Animal Academy and a dedicated Rural Skills centre.

We've also got excellent facilities at each of our other centres of learning. See the next two pages for more information.

## Where we are

Myerscough College's Main centre is in a great location, within easy access of many major towns and cities.

Preston	6 miles
Blackpool	15 miles
Lake District	45 miles
Manchester	40 miles
Liverpool	45 miles



# My Myerscough Centres

There's a lot more to Myerscough College than just its Preston campus. Myerscough has additional centres of learning across the country.

## Croxteth Park Centre Croxteth Park, Liverpool



Myerscough College Liverpool Centre,  
Croxteth Park, Croxteth, Liverpool L12 0HB  
Tel: 0151 228 7162  
Email: croxteth@myerscough.ac.uk

Croxteth Hall and Country Park provides a fantastic venue for anyone studying in the land-based sector. There is the opportunity to combine the old with the new as students study in the original Hall and Victorian Walled Garden, but also benefit from the state of the art new Animal and Equine Studies Centre and the Arboriculture Centre. The 550 acre County Park provides woodlands, parkland, gardens and a conservation area.

Croxteth is currently offering 14-16 courses in Animal Care and Horticulture. We can also offer Horse Care as an infill with the full-time students and English and Maths for Home Educated students.

## Bowring Park Centre Huyton, Liverpool

Bowring Park, Roby Road, Huyton, Liverpool L36 4HD.  
Tel: 0151 228 7162 Email: bowring@myerscough.ac.uk

The College's Centre is set in the grounds of Bowring Park, occupying the newly refurbished stable block and coaching house - as well as having full access to the 18 hole golf course and, soon to be rebuilt, walled garden.

Working in partnership with Knowsley Council, Myerscough offers courses in Horticulture, Sportsturf, Foundation Learning and Golf Studies in the park.

Bowring is the oldest public park in Knowsley and includes the first municipal golf course in England (established 1913). It opened in 1907 and was a gift of Liverpool's first Lord Mayor William Benjamin Bowring.

## Witton Park Centre Witton Park, Blackburn

Myerscough College Blackburn Centre, Witton Park,  
Preston Old Road, Blackburn BB2 2TP  
Tel: 01254 667166 Email: enquiries@myerscough.ac.uk  
f myerscoughwitton

The College's Blackburn Centre is located within the Visitor Centre at Witton Country Park. Set in 480 acres of park and woodland, yet only two miles from the town centre, Witton Park provides the ideal venue for students wishing to undertake a range of courses in Animal Studies and Foundation Learning, supported by computer and library facilities that are linked to the main College campus at Preston.

There are extensive practical facilities on site for animal care and management, with a wide range of companion animals including rabbits and small rodents as well as collections of reptiles, amphibians, fish and invertebrates. A variety of housing is used and students have access to specialist equipment for animal husbandry and a dedicated dog grooming salon.

Students also have opportunities to visit local, animal-based industries such as dog trainers and farms. They will be offered a range of interesting guest speakers throughout the College year.

There are also excellent resources for horticulture and landscape including impressive grounds and plant collections, cultivated areas, glasshouses, potting sheds, a tree nursery and a vast expanse of park and woodland.

**Check the website for Advice Morning dates**

## Warrington Centre Walton Hall Park, Warrington

Myerscough College Warrington Centre, Walton Hall,  
Walton Lea Road, Higher Walton, Warrington WA4 6SN.  
Tel: 0800 652 5592 Email: enquiries@myerscough.ac.uk

The College's Centre is set within the newly restored Shippin in the heart of Walton Hall Park, immediately adjacent to the newly refurbished conservatories and glasshouses. Students also have full access to the Zoo, ornamental gardens, extensive parkland and woodland.

Working in partnership with Warrington Borough Council and the Walton Lea Partnership, Myerscough College offers courses in Foundation Learning, Animal Studies, Horticulture and Landscape Studies.



Naturally, you'll spend a fair amount of your time at Myerscough College studying – so we've made it as enjoyable and productive as possible,

by providing a range of dedicated study facilities, IT access points and user-friendly learning resources to help you get the most from your chosen course!



## My learning resources

## My study facilities



### An excellent library

The user-friendly College library is housed on the ground floor of the modern Learning Resource Centre. The library at Myerscough delivers a dynamic information service through a stock of around 45,000 books and journals along with a comprehensive range of electronic media. A number of local and national newspapers are also available. The College library is known to be one of the best specialist libraries in the country. Library staff are always available to provide expert advice and guidance.

Open seven days a week during term time, and weekdays during holidays, the library has a number of silent study rooms and 100 study places arranged to provide a comfortable and relaxed atmosphere. Fifty-five networked PCs are available for student use along with a series of laptops that can be loaned out to help during assignments and presentations. Printing, photocopying and refreshment facilities are also available.

The College library also has access to VALNOW, the Virtual Academic Library of the North West – part of the UCLan network. This enables tutors and library staff to search around 500,000 items from the University library – from books and photocopies of journal articles to numerous online services – many of which can be delivered to Myerscough for study use. The library also has its own section on the College website which provides remote access to many of our library services.



### Computer centre

The College's computer centre is housed on the first floor of the main Fitzherbert Brockholes building. Networked PCs, software and associated printing facilities are continuously updated and enhanced to provide the best service possible. There is access to a range of word processing, spreadsheet, database and graphics packages (on Microsoft Office Professional) along with specialist software related to your chosen subject. Every student has their own College email address, network file space and Office 365 provision – including free Office applications for the duration of their course – along with fast and reliable internet access.

A wireless network provides internet access for laptop, tablet and smartphone users across the campus.

### Amazing practical facilities

Regardless of which course you choose you can be certain that you'll have access to some of the best teaching facilities available for your subject. From the Animal Care Centre and International Equestrian Arena to the National Centre for Arboriculture and the Sportsturf Technology Unit, students benefit from using high-quality industry-standard equipment. In fact, take a closer look at the 'Resources' panel in each of the subject sections in the prospectus for a comprehensive list of teaching facilities. It's no wonder so many of our students enjoy their studies and progress to successful careers in their chosen subjects.

### Superb laboratories

The College laboratories provide an essential and dynamic service at the centre of the College. They are used to support scientific teaching and learning as well as research in the land-based industries. This ranges from agriculture and horticulture to animal care and veterinary nursing. We are also an official Met. Office Weather Station. A team of friendly, well qualified and experienced technicians and assistants support all teaching and research activities and are always happy to help and advise students who use the facilities.

### Academic research

Myerscough College is proud of its commitment to original research. We believe that our teaching and learning should be underpinned by strong research activity. This is undertaken by both lecturing staff and students. The College's research specialisms are 'Sustainable Agriculture and Arboriculture', 'Animal Welfare and Equine Performance', 'Sports Health and Performance' and commercially sponsored trials and investigations.

17 research projects are currently being funded by the College. The College is becoming well known in both government and academic circles for the research work it undertakes, hosting a popular annual research conference to highlight our work. Much of this work is also undertaken in collaboration with other Higher Education Institutions including the University of Central Lancashire, Lancaster University, the University of Manchester and the University of Liverpool.



Here at Myerscough we have an excellent range of support and welfare services to meet your needs. Our advice and guidance team is dedicated to helping you succeed on your chosen course.

# My welfare & support

Student life is a lot more than studying and exams! As well as discovering new friends and new experiences, it's a transition period that takes you into a new phase of your life. So, if you find you need any information, advice and guidance along the way, just come and talk to us in The Core! We've got a range of support facilities specifically designed to help you on your journey!



The Core – Student Advice Centre at the Preston campus

## Inclusive Learning

Our Inclusive Learning team provides a flexible response to elective Home Educated students, students with disabilities or learning difficulties.

The College can organise a range of support, including:

- Assistive Technology
- Learning Mentors
- British Sign Language (BSL) communicators
- Study skills support
- Exam arrangements
- Learning resources
- Note-takers and scribes
- Specialist Tutors
- Inclusive Learning Advisors

This support is subject to funding availability and EHE students may be asked to provide evidence of this additional requirement.

School students requiring support must have this provided by their home institution.

## Counselling

Perhaps you're not in a position to talk to family and friends? You can still discuss any problems with our professional, trained counsellors. Whether it's personal, social or academic, you can talk in confidence to an experienced, caring person who won't judge you, but will listen – and can help you deal with your issues.

## Chaplain

Our resident Chaplain is another source of help if you have problems or if you simply need to talk in confidence to someone who'll listen carefully to what's on your mind and what's happening in your life. It doesn't matter what your religious faith is (or even if you have a faith) the Chaplain is here for everyone.

## Careers guidance

Your time at Myerscough College is a stepping stone to your future career. If you need some advice and guidance in deciding exactly what you want to do after College, have a word with your course tutor. You will also find a lot of information in the careers section of our library and in the dedicated MyFuture careers section in The Core. Further help is available from our support team in The Core, which has close links with the local Young People's Service.



# My sporting life

If sport is your way of relaxing after a hard day's study, we've got a great range of facilities for you.

Myerscough's sports facilities include grass football and rugby pitches, a multi-use 3G pitch, a new High Performance Sports Centre and a separate four-court indoor sports hall with facilities for basketball, five-a-side football, volleyball, tennis, cricket practice and badminton.



The Gymnasium is a fully equipped state-of-the-art facility which includes a wide range of cardiovascular and resistance machines and free weights. The Golf Studios have two Golf Simulators which include golf courses from around the world, an outdoor practice range and a purpose built indoor chipping green. The College also boasts a 9-hole golf course and driving range.

Both the Gymnasium and the Golf Course operate on a membership basis. Students are entitled to a reduced rate for an academic year. Short-term and casual-user packages are also available.

Various classes are organised throughout the year in our dedicated fitness and aerobics studio. These often include karate, tae-kwon-do, spinning, Zumba, Pilates, Dru Yoga, keep fit and circuit training. Many of these are free for students with gym membership.



# My progression

Studying at Myerscough College isn't just about head-down learning of the one subject you've chosen as your course – it's about getting a well-rounded education that will prepare you for the world of work – and give you lots of invaluable life skills.

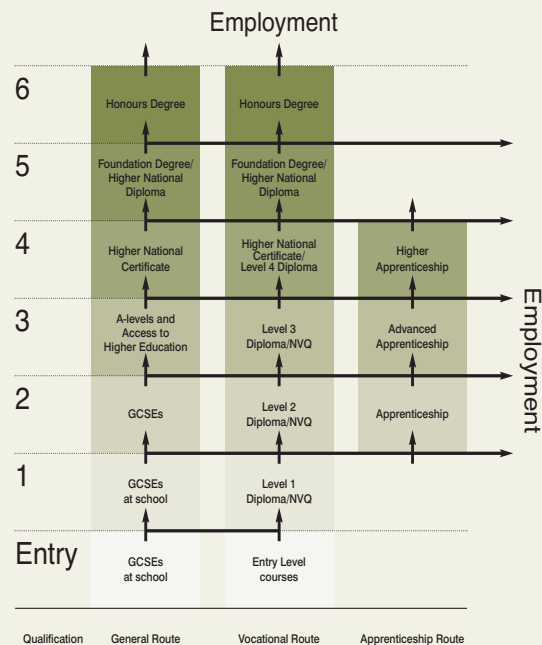
## My progression

The great thing about Myerscough College is that you can choose to study at a range of different levels. So whatever qualifications, exam results or experience you've got there will be a course that's just right for you.

Our courses start at entry level and progress to undergraduate degrees, and on to postgraduate study. So, if you enrol on a 14-16 course at Myerscough, you can be sure there is room for you to progress to a higher level of qualification.

Each of the courses listed in this prospectus has its academic 'level' highlighted in the 'Course Details' panel so that you can find the perfect course to meet your needs. Use our career path below to help you plan your route to achievement.

**NB:** Please note that the course titles used in this prospectus may differ from the titles used on exam certificates at the end of the course. Certificate titles refer to Edexcel or other awarding body course titles, whereas Myerscough course titles aim to reflect the unit choice and course focus.



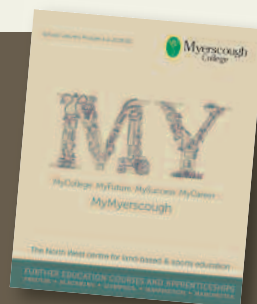
## Progressing to Further Education

Don't forget that Myerscough College also offers Further Education courses, across the majority of our subject areas. With more than 1000 Further Education students at the College, it provides an excellent progression route for successful students to continue their studies.

**For further information or to find out more about your choices, request a copy of our Further Education prospectus and course factsheets from Course Enquiries or download copies from the website.**

Email: [enquiries@myerscough.ac.uk](mailto:enquiries@myerscough.ac.uk) Telephone: 0800 652 5592

Copies of the Further Education prospectus can also be downloaded from the College website.



# My entry requirements

## Entry Level

Students are aged 14 or over (school year 10) and have interest in practical subject to qualify for an entry level course. The College will work with schools/parents to ensure that appropriate support is provided for students.

## Level 1 – Foundation

Students are aged 14 or over (school year 10) and have interest in practical subjects. These courses give a practical introduction to a particular subject area. Students must have functional English skills which will be assessed at application.

## Level 2 – Intermediate

Students are aged 14 or over (school year 10) and have good English skills which will be assessed at application. Some learning areas may require a level of prior experience and knowledge. These courses cover practical skills and relevant background knowledge.

## Progressing to Further Education

Don't forget that Myerscough College offers a range of Further Education and Apprenticeship courses for students to progress to when they leave school. All courses have progression routes on to related courses or students can choose to move in to a different college area.

# Mysuccess story

## Myexperience

Student Profile

Name: **Calum**

Age: **20**

Home town: **Blackburn**

Course: **FdA Location Photography**



After being home educated through my childhood I first attended Myerscough College to study photography on the 14-16 Diploma, and have been here ever since. I found the College to have a very relaxed and friendly atmosphere and the lecturers to be very supportive. I have had a lot of fun at Myerscough and really enjoyed the time I have studied here. After finishing the 14-16 Diploma I carried on through Level 2 and the two year BTEC Level 3 and after completing 5 years I decided to stay on to study my degree at Myerscough, in partnership with the University of Central Lancashire, because I still enjoy studying in the great surroundings at Myerscough whilst having access to the facilities at UCLan.



# My open campus events

Campus tours can be arranged for any time with any group of students through the school liaison team (see page 16) however for schools with students interested in accessing the 14-16 programme please contact the 14-16 Office. The events consist of a tour around the campus of interest with a particular focus on any areas that students are considering studying in, a chat about the various options available at 14-16 and then moving into Further Education and a chance to ask any questions regarding the course and the College.

Wherever possible please book campus tours for the week before a formal College Saturday Open Morning (see page 2 for dates) so that students can follow up interest by bringing their parents/guardians/carers to College.



# My access to college course

Myerscough's Foundation Learning team has built up an excellent reputation over many years for successfully working with students who have a wide range of learning difficulties and disabilities; helping them fulfil their potential in a safe and supportive environment.

Throughout the 14-16 course pages in this prospectus there are details of entry level courses run within the Foundation Learning team that certain students may be able to access one (or more) day a week these include options in Animal Care, Agriculture and Horticulture.

Myerscough also offers a more flexible approach to schools working with students with a range of needs. Schools are invited to bring in groups of students for a set period each week to study across a range of vocational areas.

The arrangement may be for a term or an entire academic year. The main subjects of interest tend to be Animal Care, Agriculture and Horticulture as these are the areas with the best accessibility for students with limited mobility.

The courses are generally unaccredited and based on student need. Group size is dependent on the individual needs and support requirements of the students, however no more than 8 students can be accommodated per group.

These courses function as an excellent transition to full time college courses at 16 or as enrichment activities for students studying within schools.

For a discussion regarding tailored courses for individual schools please contact the Head of Foundation Learning on **01995 642222 ext. 2526**, email [bsherriff@myerscough.ac.uk](mailto:bsherriff@myerscough.ac.uk) or the 14-16 Co-ordinator on **ext. 2593** email [lwallace@myerscough.ac.uk](mailto:lwallace@myerscough.ac.uk)



# My short courses

Myerscough College offers schools and other groups the option to either have Myerscough Staff visit school or to bring groups of learners to one of our centres to complete short courses in a wide variety of subjects. If the area you are interested in is not mentioned below then please contact the 14-16 team to discuss your specific requirements. Short courses can last anything from a couple of hours to approximately 6 weeks on a day-release basis. They will usually be available in the last half term of the academic year at Myerscough's Preston site.

## MyFloristry

Myerscough Floristry staff can visit your school to work with groups of learners. This might be to prepare the flowers for a special event, train a Young Enterprise group, support a school based area of study or simply as enrichment. The visits are designed for students who are considering studying floristry at the College at Further Education. The visits are **FREE**, however schools are asked to cover the cost of flowers and other consumables used.



## MyPhotography

Schools and other groups are invited to bring groups of students to experience photography skills for the first time or to supplement an existing course of study, utilising Myerscough's specialist staff and resources. The cost for this course is £30 per hour for groups of no more than 8 students.

## MyHorticulture

Students groups have the opportunity to attend Myerscough to experience a range of different Horticultural areas. Specific activities can be discussed with the 14-16 team but activities on offer include tractor driving (Preston only), the making of hanging baskets and planted containers for the school site and basic hard landscaping skills. The cost for this course is £30 per hour plus consumables for groups of no more than 10 students.



# My schools and Colleges Liaison Team

Welcome to Myerscough College's Schools and Colleges Liaison Team. We aim to raise young people's aspirations and awareness of the opportunities that further and higher education can offer within the land based and sports industries. Our team provides information, advice and guidance to assist students and those supporting them with the decision making process.

## Career Events

We are delighted to attend any of your career events to meet and advise students on Further Education, (school leavers), Higher Education (university level) and Apprenticeships. Our resources will illustrate the exciting courses Myerscough College offers in our unique countryside setting.

## Assemblies

Our presentation includes a tour of our dynamic courses and unique campus and informs on our inclusive entry conditions. The assembly focus is to empower and motivate students to be open to opportunities, to take action, arrange college visits, meet tutors and complete applications.



## Drop-in Consultations

Often hosted during break or lunchtimes that offer students a relaxed, informal environment to chat and learn more about options available to them post 16.

## Mock Interviews

We understand how important interview practise and experience is for all students. Our highly trained team will emulate a real interview scenario and will encourage students to answer difficult questions, improve their communication skills and develop interview strategies. Each interview will be evaluated and positive, constructive feedback will be offered to staff and students.

## On-site Visits

Myerscough is a unique environment to study and we love nothing more than to show students our stunning grounds, state of the art resources and magnificent outdoor facilities. You are very welcome to join us for a 60-90 minute tour, if your students have a specific interest then please let us know.

## Schools Team Contact Details

**Nick Harrison** – Schools and Colleges Liaison Co-ordinator.

**Amelia Bibby** – Schools and Colleges Liaison Officer, Bilsborrow Preston.

**Loren Coles** – Schools and Colleges Liaison Officer, Bilsborrow Preston.

**Paul Ryan** – Schools and Colleges Liaison Officer, Croxteth Liverpool.

## Telephone

Co-ordinator – **01995 642167**.

Team Office Preston – **01995 642310/2341**.

Team Office Croxteth – **0151 541 4077**

Ext: 2412.

Or email: [schools@myerscough.ac.uk](mailto:schools@myerscough.ac.uk)

# My fees and finance



For the majority of students aged 14-16 the fees will be covered by the school they are registered with. In certain cases the school may discuss with parents and guardians either sharing of the fees or parents/ guardians covering the cost of the course. See pages 22-24 for more information on the finance arrangements for home educated students.

As Myerscough is mainly a Further and Higher Education College it is unable to access funding for students of school age (except home educated students). This also applies to support bursaries and fee remission.

Where a student is identified as requiring support whilst at College it is the responsibility of the home school or parents/guardians to arrange this. This is usually provided by the school but in certain circumstances may be purchased from the College.

Where a student uses public transport or a College operated bus service to attend Myerscough then they must pay. Bus passes can be purchased from the Myerscough finance department if students use the College buses.



**Garden Centre • Display Gardens  
Garden Café • Floral Pavilion**

## Visit our superb plant kingdom

- Beautiful landscaped display gardens
- Indoor tropical zone with specimen plants
- Woodland garden and arboretum
- Temperate house with attractive displays
- Popular, well-stocked garden centre

**Garden café open  
10.00am-4.00pm  
7 days a week**

Best Small Tourist Attraction at North West in Bloom for six consecutive years (2012-2017)

**Plant World and Garden Centre  
Myerscough College**



# My 14-16 course

## Course Organisation

The majority of courses offered last for one year and are available for learners in Years 10 and 11. Year 10 students who successfully complete the course will, in most cases, be offered the opportunity to complete a second year to 'top up' their qualification. Details of the top up qualifications are available within the course information. In most cases Year 10 students will be considered for courses first, in order to ensure that the top up year remains viable. The majority of courses do however have the capacity for Year 11 students as well. For information regarding the application process please refer to the Myapplication section on page 19.

## Costs

Prices are based on a 33 week year. Certain top up courses only run for 31J31

weeks in Year 11 to allow time for GCSE exams. For more information about course fees please contact: The 14-16 Team on **01995 642222 ext. 2593** or email us at **14-16@myerscough.ac.uk**

Additional costs may be incurred for extra off-site delivery, smaller group sizes or additional equipment and teaching requirements.

## Additional Support and/or Learning Support Assistants

If a pupil has additional support at school, the school must provide this support whilst the pupil is at College. Schools sending large groups of students must be supervised by a member of school staff. Support may be available for Home Educated students although evidence of need may be required.

## Lunchtime Arrangements

Pupils may bring their own packed lunches or purchase meals from any of the College catering outlets. Pupils must stay on campus during breaks and lunchtimes. If a pupil is entitled to free school meals the school must make appropriate arrangements with the 14-16 Office.

## Transport

Arrangements for the transport of pupils to and from College is the responsibility of the

school/parent.

No supervision is available for pupils after classes have finished or inbetween lessons. If students are catching College buses they need to be aware that these may not run the full length of the school term. A free shuttle bus is provided from the Preston campus to the service bus stop on the A6.

## Maintaining Contact with Schools

Throughout a pupil's time at the College, contact is maintained with the schools to inform of progress, attendance and behaviour. The College actively encourages regular dialogue with each participating school or co-ordinating body and both are welcome to contact the 14-16 Team to discuss any aspect of the 14-16 provision at the College.

## Myerscough College 14-16 Contact

The 14-16 Team Tel: **01995 642222 ext. 2593**  
**14-**

## Safeguarding

Myerscough College and its partner schools are fully committed to the 'Safeguarding' / Every Child Matters (ECM) agenda. All organisations are fully aware of their roles and responsibilities working with children, young people and vulnerable adults. All staff are aware of their roles and responsibilities and will follow appropriate guidelines, policies and procedures.

For more information on Myerscough's Safeguarding/Risk Assessment procedure please contact Lisa Hartley on **01995 642222** or **lhartley@myerscough.ac.uk**

**16@myerscough.ac.uk**

## DISCLAIMER

All courses are subject to sufficient levels of recruitment in order to run. This prospectus was compiled in January 2019 and every care has been taken to ensure that the information contained herein is accurate at the time of printing, but the course programme is subject to continuing development and changes of circumstances may necessitate cancellation of courses or alteration to the programme of courses, course location, fees and

# My application

Making your application couldn't be easier! We'd love to have you as a student here at Myerscough College, so we'll do all we can to encourage you to join us. We'll provide you with any advice and information you need about choosing your course!

## Speak to Your School, Parents or Guardians

If you have decided that you would like to apply for a Myerscough course during years 10 and 11 then the first thing you need to do is speak to your school. The 14-16 team can sometimes advise you on the member of staff within your school who deals with college courses otherwise your Head of Year is always a good point of contact. You need to be ready to provide information like the course day, the course level and title and the cost. This information can be found later on in this prospectus. If you do not attend a school then you need to discuss the course with your parents or guardians. The 14-16 team are always happy to speak to you, your parents/guardians and your school so just give us a ring on **01995 642222 ext. 2593** or email **14-16@myerscough.ac.uk**

## Apply Online

Our online application system is the fastest way to make your application. If you have permission off your school or Home Educating Parent or Guardian then you can start this process. To start the application process simply visit the Myerscough website, click on the **14-16 tab** at the top of the homepage, and then click your subject area and chosen course. You'll see the **Apply** button on the factsheet. Please ensure that you fully complete all sections of the form. Applications can be delayed as a result of missing or incomplete information. Your school or Home Educating Parent/Guardian will need to contact the 14-16 Co-ordinator on **01995 642222 ext. 2593** or **lwallace@myerscough.ac.uk** to request a 14-16 Application Form Part B. This needs to be printed out and signed.

**Applications cannot be processed without both parts of the application form.**

## Attend an interview and a guided tour

We will generally invite applicants to attend an interview at the College. This will include a tour of the College's practical, teaching and support facilities. It also gives you an opportunity to meet the course tutor to discuss the course content, your career ambitions and any specific learning support requirements that you might have.

## Apply early

Most of our courses are very popular and fill up quickly. Please submit your application as soon as possible. Students will be interviewed on a first come first served basis for available places.

## What happens next?

The following gives a brief guide to the steps involved in your application being processed.

1. Your application is received and an acknowledgement letter sent out to you. The admissions tutor within your chosen subject area will review and assess your application.
2. You will be invited to attend an informal interview. If you attend school then you will need to discuss with your teachers who will be responsible for bringing you to College.
3. Once you have received an offer you will be able to access a wide range of College resources on your individual 'MyPage' section of the College website. This 'one-stop shop' enables you to – amongst other things – accept your offer, complete your consent and indemnity form and order clothing.
4. Students start College in September.



# My directions

## Centrally situated

Myerscough College's Preston campus is centrally situated in the heart of Lancashire, with great public transport links and dedicated College bus services. Wherever you're coming from, there's easy access so you'll have no trouble in finding us!

## Road

The College is just six miles north of Preston (or eight miles south of Lancaster), one mile from the main A6 Preston to Lancaster road – which runs parallel to the M6. What's more, we're only around 10 minutes from either Junction 32 of the M6 (Preston/Blackpool/M55) or Junction 33 (Lancaster South). You'll also be glad to know that there's plenty of free parking space for students on campus. For satellite navigation users our postcode is PR3 0RY, on St Michael's Road, Bilsborrow.

## Rail

Preston is the nearest railway station and is well served by national rail links. Preston is on the main west coast London – Glasgow line, with excellent local connections.

For further details, call National Rail Enquiries on 08457 484950 or visit [www.nationalrail.co.uk](http://www.nationalrail.co.uk)

## Bus

Myerscough College provides transport to and from the main campus each day during further education term time. Currently there are eight bus services to the College, from Fleetwood (via Blackpool and Poulton), Burnley (via Accrington and Blackburn), Chorley and Charnock Richard, Clitheroe and the Ribble Valley, Lytham and St Annes (via Warton, Freckleton and Kirkham), Preston bus station and Preston railway station.

Buses also run during the day to Bilsborrow village, for connections to Stagecoach services from Lancaster, Morecambe and Preston bus station (connecting to the Bolton, Horwich, Chorley and Bamber Bridge 125 service).

Buses also run at the Liverpool centre, collecting students from Southport, Ormskirk, Skelmersdale, Rainford, Kirkby, West Derby and Fazakerley.

# My bus timetable

From less than **£1.50** per day

Many students travel to Myerscough using our great-value daily bus services. Our routes cover much of Lancashire and are outlined below. Return services depart from College at around 5pm. Students can pay for a single trip or purchase a discounted Annual Pass.

Annual 'scholar' passes are also available for Stagecoach services (from Bolton, Horwich, Chorley, Leyland and Southport) to connect with the College service from Preston Bus Station, as well as for service 40/41 (from Lancaster and Morecambe) to Bilsborrow village.

PRESTON BUS STATION <span>Service 437</span>	
Preston Bus Station	0835
Moor Park Ripon Street (+Kings Drive)	0838
Fulwood, Black Bull	0845
Broughton	0849
Barton, Jepps Lane	0855
Myerscough College	0902

PRESTON RAILWAY STATION <span>Service 433</span>	
Preston Railway Station (Fishergate)	0850
Moor Park Gates	0855
Fulwood, Black Bull	0858
Broughton Post Office	0903
Barton, Jepps Lane	0915
Myerscough College	0920

CHARNOCK RICHARD • CHORLEY <span>Service 125c</span>	
Charnock Richard Leeson Avenue	0712
Lower Burgh Way	0718
Chorley Interchange Stand E	0732
Clayton Green opp Pines Hotel/Lidl	0748
Clayton Brook Great Greens Lane	0751
Bamber Bridge Withy Trees	0801
Preston Bus Station Stand 3	0825
Broughton Inn	0851
Myerscough College	0905

BURNLEY • ACCRINGTON • BLACKBURN <span>Service 852</span>	
Queensgate	0715
Burnley Interchange	0720
Huncoat, Griffins Head	0735
Accrington Bus Station (Stand O)	0740
Church, Commercial Hotel	0745
Intack, Accrington Road	0750
Blackburn, Penny Street (Stop C1)	0805
Mellor, Windmill Hotel	0820
Samlesbury, Norman Villas	0825
Broughton	0840
Myerscough College	0845

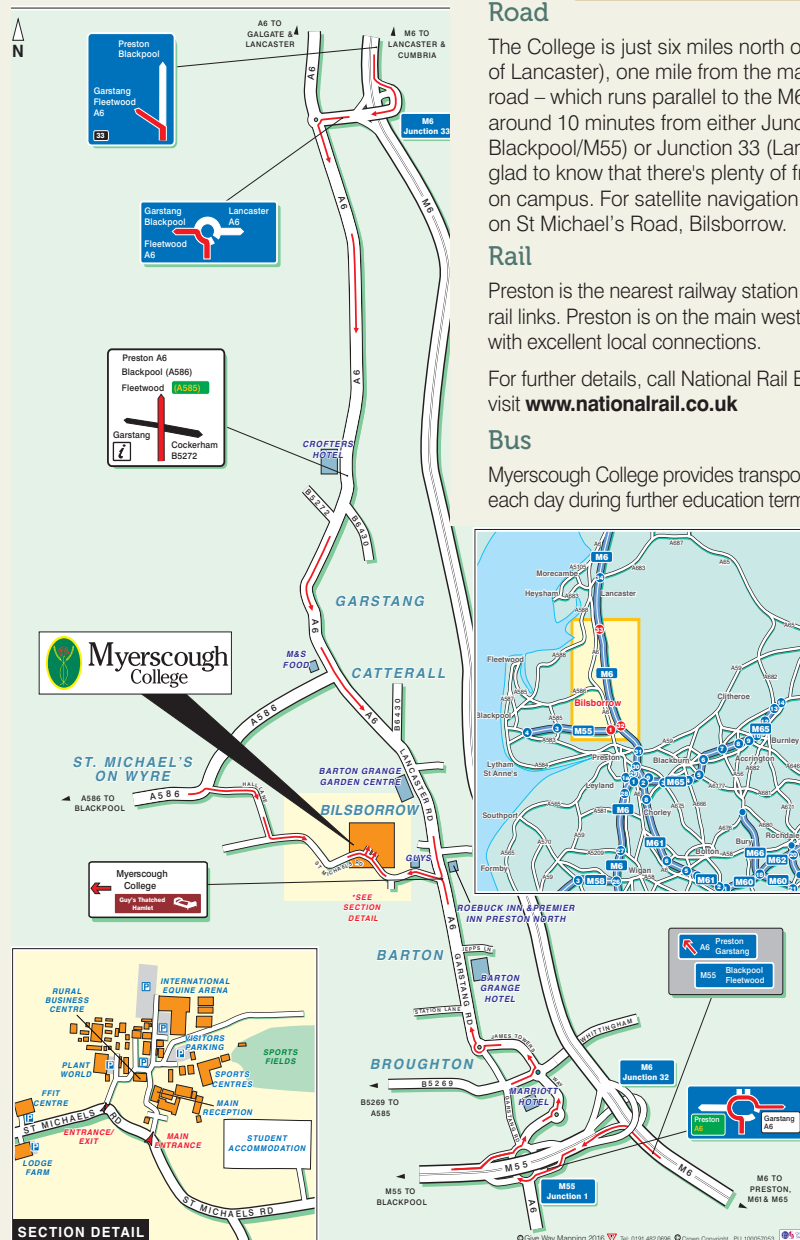
LYTHAM ST ANNES <span>Service 853</span>	
St Anne's Square	0745
Lytham Square	0800
Warton, Pickwick Tavern	0810
Freckleton War Memorial	0820
Kirkham, Market Square	0830
Windy Harbour Road End	0835
St Michaels (Hall Lane opp. school)	0845
Myerscough College	0850



FLEETWOOD • BLACKPOOL • POULTON <span>Service 400</span>	
Fleetwood, Queen's Terrace	0733
Fleetwood Queens Hotel	0738
Cleveleys Thornton Gate	0746
Cleveleys Victoria Square	0748
Cleveleys North Drive	0752
Cleveleys Central Avenue North	0755
Blackpool Talbot Road, TA1	0810
Thornton, Beechwood Drive	0820
Fleetwood Road/New Lane	0825
Castle Gardens	0830
Poulton Teanlow Centre	0835
Little Eccleston (Blackpool Old Rd)	0845
St Michaels (Hall Lane opp. School)	0855
Myerscough College	0905

CLITHEROE • RIBBLE VALLEY <span>Service 995</span>	
Clitheroe Interchange	0737
Whalley Bus Station	0748
Milton Three Fishes	0755
Hurst Green Post Office	0801
Knowle Green	0806
Ribchester Black Bull	0811
Longridge Market Place	0818
Goosnargh Stags Head	0825
Myerscough College	0845

Informative leaflets which detail the bus routes to the Liverpool and Preston Centres are available to download from the College website.



# Home Educated Students

## Part Time 14-16 Courses

**Age Range:** Students should be 14 or 15 on, or before, 31st August of their start year, meaning their one or two year programme leads them directly into post 16 education.

**Course Offer:** Myerscough offers a wide range of courses which usually run one or two days each week throughout the academic year. These courses are detailed in the 14-16 prospectus. Myerscough courses are open to all students who meet the age and entry criteria regardless of their educational background. This means that students on each course come together to study a common interest but may be based anywhere throughout the Northwest and be educated in a variety of ways. These programmes provide an excellent transition onto post 16 full time College courses.

**Fees:** Funding is provided for Home Educated students accessing the 14-16 programme. Parents/Guardians must fund transport and clothing/equipment fees. If students have additional learning needs these must be discussed with the 14-16 team and if possible appropriate evidence provided. Part time under 16 home educated students are eligible to apply for the majority of bursaries available to post 16 students if they meet the criteria. Support will be calculated on a fractional basis based on the number of days the student attends College.



## Full Time Courses for Under 16 Students

**Age Range:** Students must be 15 on or before 31st August of their start year.

**Course Offer:** In certain circumstances it is beneficial for students to join full time programmes before their 16th birthday. Most Entry and Level One Further Education courses detailed in the prospectus will consider 15 year old students. If they meet the entry criteria students may even be considered for Level Two or Three programmes. Myerscough staff must feel that accessing full time programmes early is the right thing for the individual both from a social and academic point of view. All programmes include Maths and English Language GCSE or equivalent unless the student has already obtained a C/Level 4 or above at GCSE in each subject.

**Fees:** Funding is provided for Home Educated students accessing full time provision. Parents/Guardians must cover a £95 facilities and resources contribution, transport and clothing/equipment fees. College bursaries and support funds are available to eligible students. Residential accommodation is not available to students until they reach their 16th birthday.

### Myexperience

Student Profile

Name: **Laura**

Age: **15**

Home town: **Clitheroe**

Course: **Level Three Diploma Photography**



My cousin's wife works at Myerscough so I knew that they offered courses to under 16 students who were Home Educated. I really liked the idea of studying at College. I have always enjoyed photography and I want to be a cinematographer so I thought this was a really good starting point.

I think that the course has been a really good gateway into Further Education. It would be hard to go straight from being Home Educated to a full time college course. I feel like I have learnt so much during my course and I am definitely a better photographer now.





# Home Educated Students

## Full Time Courses for Post 16 Students

**Age Range:** Students must be 16 or over on 31st August of their start year.

**Course Offer:** Once students reach the statutory school leaving age they are eligible to apply for funded post 16 education in exactly the same way as school leavers. The Further Education School Leavers Prospectus details all available courses. If students with a Home Education background applies then Myerscough tutors are provided with additional support and guidance before interview. This means they understand that some Home Educated students have a non-standard qualification profile and may require additional support and guidance when settling in to College. The College is bound by qualification profiles when making initial course offers however all students undergo an initial assessment programme during the first six weeks of the academic year. Some students may then be moved onto courses which better fit their academic abilities and social needs. The College appreciates that some students who have been Home Educated may require additional academic or social support whilst they settle into College.

**Fees:** Funding is provided for all students accessing full time provision. Parents/ Guardians must cover a £95 facilities and resources contribution, transport and clothing/equipment fees. College bursaries and support funds are available to eligible students.



### Ofsted Inspection Report, March 2017

- High quality teaching and learning is the greatest priority for the College
- Learners benefit from excellent resources
- The College has a shared culture of 'opportunities for all to succeed'
- Study programmes are implemented highly effectively with high-quality work related activities and purposeful work experience
- Safeguarding is meticulous. Learners feel safe and understand how to keep themselves safe
- The curriculum reflects the most up to date working practice
- Teachers have high aspirations for their learners and use a variety of interesting activities to challenge and motivate them
- Standards of learners' behaviour are excellent
- Enrichment activities enable learners to develop employability and personal skills

Read the full report on the Ofsted website.



Myerscough  
College



# Open Day and Country Fair

**Sunday 9th June 2019**  
(Sunday 7th June 2020) 10am - 5.00pm

**WYRE TOURISM AWARDS "EVENT OF THE YEAR"**

### More than 200 exciting attractions

- Motorsport, Machinery and Driving Displays
  - Sports Tournaments & Children's Adventure Activities
  - Animal Academy and Veterinary Nursing Events
  - Equestrian Arena Shows and Demonstrations
  - "Made in Lancashire" Food Fayre
  - Beautiful Gardens, Live Music and Entertainment
  - Uniformed Services – Police, Army, Navy & Air Force
  - Photography and Floral Design Exhibitions
  - Agriculture, Countryside and Conservation Arena
  - Archery, Laser Clay and Air Rifle Shooting
  - The 'Sheep Show' and Falconry Demonstrations\*
  - Gundog Scurry and Thwaites Shire Horses\*
  - Full Catering, Refreshments and Bar
- ...and many more activities, exhibitors & displays!

\*Subject to confirmation



**[www.myerscough.ac.uk](http://www.myerscough.ac.uk)**

for advance booking discounts and preview pages.

Myerscough College, Bilbrough, Preston. PR3 0RY Telephone: 01995 642222

**ACTION PACKED FUN DAY OUT WITH SOMETHING FOR ALL THE FAMILY!**

Plus careers and course advice and demonstrations from all our subject areas.

# Foundation Learning

Bringing together skills for everyday living

Preston: Bilborrow Campus

We provide a range of part time Foundation Learning Study Options for students with a range of additional needs. These may be learning difficulties and disabilities or it may be that a student would benefit from a transition to College in a more closely monitored and supervised environment than is available across other College departments. The Foundation Learning Department can help these students fulfil their potential in a safe and supportive environment. Our aim is to help students develop a range of important skills-social, academic and vocational- whilst providing the support and encouragement for them to grow in confidence and express their personality.

14-16 students accessing courses in this area join full time students on a part time basis. These courses can provide a valuable transition period for students aiming to access full time provision in the future. Elective Home Educated students can access the College Inclusive Learning Support however if a student is registered with a school appropriate arrangements for the provision of support must be discussed with their home institution. When offering

## Resources

- Dedicated £2.5 million Foundation Learning Centre provides superb teaching opportunities, state-of-the-art facilities and resources to deliver independent living skills.
- Access to the vocational areas of the College to follow a range of practical study programmes.
- Dedicated functional skills workshop to deliver English and maths.
- A range of additional support staff (provided through Inclusive Learning) to assist in all day-to-day situations.
- Variety of 'social enterprise' employment opportunities and work experience.

## Myexperience

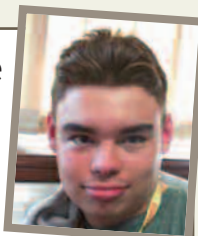
Student Profile

Name: Elliot

Age: 16

Home town:

Poulton-le-Fylde



Elliot enrolled at the College for two days a week in year 10. He joined the Life Skills group with his school support worker and got involved with a wide range of activities including lambing, baking, small animal work and a range of trips. Elliot has returned in Year 11 to study an Entry Level Three Award in Skills for Working Life Animal. During his time at College Elliot has successfully transitioned to a post 16 environment, preparing him to attend to College full time when he leaves school. Elliot has developed into a popular and enthusiastic member of the Foundation Learning Community and benefits from the enrichment his College course provides to his school curriculum.

courses then post 16 opportunities will be considered to ensure clear progression routes are identified. Offers are subject to there being space on the programme.



## NPTC Entry Level 2/3 Award in Skills for Working Life – Agriculture

Duration: 1 year

Course Day: Monday/Friday

Course Times: 9.30am – 3.30pm

Location: Preston: Bilborrow Campus

Cost per pupil: £1077 per annum

School Year: 10 and/or 11



### Overview:

This course is very practical in its content and will cover a variety of agricultural skills. Most of the course is practical and based on the College farm but some work will be in a classroom. Units covered include move and prepare animal pens, recognise a healthy farm animal, weigh farm animals and feed young farm animals. This course is suitable for students working at entry level.

### Entry Requirements:

Successful interview.

### Course Organisation:

Year 10 students who progress well may move onto the Level One Certificate in Agriculture for Year 11 or move from Entry Level 2 to Entry Level 3.

### Equipment/Clothing Requirements:

Sensible outdoor clothing. Steel toe capped boots/wellingtons.

### Progression Opportunities:

Related Further Education courses.

### Assessment Procedures:

Practical and theory assessment.

**Group Size:** Learners will join full time students.

**\*NB** – As learners will join a full time student group they will follow the College rather than the school term dates.

## NPTC Entry Level 2 / 3 Award in Skills for Working Life – Animal Care

Duration: 1 year

Course Day: TBC

Course Times: 9.30am – 3.30pm

Location: Preston: Bilborrow Campus

Cost per pupil: £1080 per annum

School Year: 10 and/or 11



### Overview:

This course is very practical in its content and will cover a variety of small animal care skills. Most of the course is practical but some work will be in a classroom. Units covered include recognising different small animals, assisting with their feeding, cleaning, grooming, welfare and general health checks. This course is suitable for students working at entry level.

### Entry Requirements:

Successful interview.

### Course Organisation:

Year 10 students who progress well may move onto the Level One Certificate in Animal Care for Year 11 or move from Entry Level 2 to Entry Level 3.

### Equipment/Clothing Requirements:

Sensible outdoor clothing. Steel toe capped boots/wellingtons.

### Progression Opportunities:

Related Further Education courses.

### Assessment Procedures:

Practical and theory assessment.

**Group Size:** Learners will join full time students.

**\*NB** – As learners will join a full time student group they will follow the College rather than the school term dates.



# Foundation Learning

Bringing together skills for everyday living

Preston: Bilborrow Campus



## NPTC Entry Level 2/3 Award in Skills for Working Life – Horticulture

**Duration:** 1 year  
**Course Day:** TBC  
**Course Times:** 9.30am – 3.30pm  
**Location:** Preston: Bilborrow Campus  
**Cost per pupil:** £1080 per annum  
**School Year:** 10 and/or 11



### Overview:

This course is very practical in its content and will cover a variety of horticultural skills. Most of the course is practical but some work will be in a classroom. Units covered include identifying trees and plants, watering and feeding plants, using appropriate tools and garden maintenance. This course is suitable for students working at entry level.

### Entry Requirements:

Successful interview.

### Course Organisation:

Year 10 students who progress well may move onto the Level One Certificate in Landscape, Garden Design and Construction for Year 11 or the Entry Level 3 course.

### Equipment/Clothing Requirements:

Sensible outdoor clothing. Steel toe capped boots/wellingtons.

### Progression Opportunities:

Related Further Education courses.

### Assessment Procedures:

Practical and theory assessment.

**Group Size:** Learners will join full time students.

**\*NB** – As learners will join a full time student group they will follow the College rather than the school term dates.

## Entry Level Life Skills / Personal and Social Development

**Duration:** 1 year  
**Course Day:** TBC (1-2½ days)  
**Course Times:** 9.30am – 4.30pm  
**Location:** Preston: Bilborrow Campus  
**Cost per pupil:** £1080 per annum (based on one day)  
**School Year:** 10 and/or 11



### Overview:

These entry level study programmes provide an excellent opportunity for students to learn a range of life skills and personal skills in a supportive and friendly environment. They are ideal for young people with moderate learning difficulties and/or disabilities.

The programmes encompass the themes of 'Personal and Social Development' and 'work-related employment and employability.' The curriculum has been developed around 'skills for daily living' – from reading, writing and independent living to workplace skills, communication and practical project work. Other aspects cover keeping fit and healthy, enjoying leisure time and taking part in community activities.

Course areas covered and course level (Entry 1,2 or 3) will depend on individual students and the days they access the provision.

### Entry Requirements:

Successful interview.

### Course Organisation:

Students will join in with full time student lessons.

### Equipment/Clothing Requirements:

Sensible outdoor clothing. Sturdy boots/wellingtons.

### Progression Opportunities:

Related Full Time Courses

### Assessment Procedures:

Practical assessments. There are no formal examinations.

## Entry Level Three/Level One Employability

**Duration:** 1 year  
**Course Day:** TBC (1-2½ days)  
**Course Times:** 9.30am – 4.30pm  
**Location:** Preston: Bilborrow Campus  
**Cost Per Pupil:** £1080 per annum (based on one day)  
**School Year:** 10 and/or 11



### Overview:

These practical qualifications are designed to help students gain the skills they need to work in the land-based sector. The study programmes provide employability experience and a range of activities across the College curriculum, dependent upon the level of the programme.

Whilst gaining new skills and knowledge, students also develop employability skills, such as meeting deadlines, health and safety requirements, the importance of teamwork and being able to follow written and oral instructions. The programmes help to provide the basic practical skills and knowledge necessary to progress to further training or to prepare for employment.

Course areas covered and course level will depend on individual students and the days they access the provision.

### Entry Requirements:

Successful interview.

### Course Organisation:

Students will join in with full time student lessons.

### Equipment/Clothing Requirements:

Sensible outdoor clothing. Sturdy boots/wellingtons.

### Progression Opportunities:

Related Full Time Courses

### Assessment Procedures:

Practical assessments. There are no formal examinations.

## BTEC Level One Sport and Active Leisure

**Duration:** 1 year  
**Course Day:** TBC (1-2½ days)  
**Course Times:** 9.30am – 4.30pm  
**Location:** Preston: Bilborrow Campus  
**Cost Per Pupil:** £1080 per annum (based on one day)  
**School Year:** 10 and/or 11



### Overview:

This is a Level 1 study programme for young people who are interested in a job in sport and leisure. It is suitable for students with disabilities and moderate learning difficulties and/or disabilities.

The programme focuses on a variety of sport and active leisure activities and helps the student to develop common, social and interpersonal skills and widen life experiences. It also provides students with the basic practical sports skills and knowledge necessary to either progress for further training or to prepare for employment. The students will experience a wide variety of sports and leisure activities, with a focus on the personal and social development (PSD) of each student. This will be supported by the opportunity to become involved in the world of work. Course areas covered will depend on individual students and the days they access the provision.

### Entry Requirements:

Successful interview.

### Course Organisation:

Students will join in with full time student lessons.

### Equipment/Clothing Requirements:

Indoor/outdoor sports clothing

### Progression Opportunities:

Related Full Time Courses

### Assessment Procedures:

Practical and portfolio assessment.

# Foundation Learning

Bringing together skills for everyday living

Preston: Bilsborrow Campus

## BTEC Level One Public Services

**Duration** 1 year

**Course Day:** TBC (1-2½ days)

**Course Times** 9.30am – 4.30pm

**Location:** Preston: Bilsborrow Campus

**Cost Per Pupil:** £1080 per annum (based on one day)

**School Year:** 10 and/or 11

### Overview:

This Level 1 in Public Services is an ideal first step towards a career in this exciting and fast moving sector. It provides a basic introductory 'hands on' programme of study and covers a wide range of practical skills and activities relating to work in the various uniformed organisations. The range of subjects provides an introduction to the industries: covering fitness testing, understanding the roles and responsibilities of various services, organisational skills, team working, contributing to your community and responding to an incident. Further units focus on assisting members of the public, taking part in sports activities and developing a Personal Progression Plan.

Course areas covered will depend on individual students and the days they access the provision.

### Entry Requirements

Successful interview.

### Course Organisation:

Students will join in with full time student lessons.

### Equipment/Clothing Requirements:

Indoor/outdoor sports clothing

### Progression Opportunities:

Related Full Time Courses

### Assessment Procedures:

Practical assessments, coursework and tests. There are no formal examinations.



# Moving On Project

Empowering Young People to Succeed

Preston: Bilsborrow Campus

## Moving On Project

**Duration** 1 year

**Course Day:** TBC (3-4 days)

**Course Times** 9.30am – 4.30pm

**Location:** Preston: Bilsborrow Campus

**School Year:** 11

### Overview:

This course contains three distinct elements. Functional Skills English and Maths; Employability and job coaching and a work placement. Learners will be taught within a post 16 environment and supported to achieve the entry requirements for appropriate progression routes.

### Entry Requirements

Successful interview.

### Course Organisation:

Day One: Edexcel Functional Skills English and Maths

Day Two: City and Guilds Level One Award

Employability and bespoke job coaching

Day Three: (and possibly 4) - Work Placement (must be secured by student with support from College).

### Equipment/Clothing Requirements:

Paper, pens, maths equipment, appropriate personal protective / work equipment for placement.

### Progression Opportunities:

Appropriate Further Education or

Apprenticeship/Traineeship programmes.

### Assessment Procedures:

Formal Functional Skills Exams,

Ongoing assessment.

**Group Size:** 10.

Please contact Andrea Gardner:

andrea@myerscough.ac.uk 01995 642143 for further information

The Moving on Project is funded through the European Social Fund and is designed to support learners age 15 to 24 who are Not In Employment, Education or Training. This programme may be suitable for year 11 learners who have barriers to learning which means they are not accessing school and learners 16 – 24 who cannot access further education. This programme is not suitable for learners with significant learning needs or behavioural issues. Learners must be able to access a post 16 environment safely and have enthusiasm to succeed. School learners remain on roll at school.





# Agriculture

## Staying ahead of the herd

Preston: Bilborrow Campus

There is currently a significant demand for highly trained and well-educated professionals to enter the agriculture and countryside industry. This demand for skilled staff which has been fuelled by the increasing awareness that food production, farming, tourism, the environment and rural affairs are all interconnected. This has created a need for motivated and technically competent people who understand the requirements of agriculture and its related industries.

The course covers large animals, crops, land management and machinery over the two years. You will learn the theory behind many of the practical skills that are taught and practiced during the course. Thus providing you with the skills necessary to either work within the land-based industry or to move onto a full-time College course.



### Resources

- A purpose built Agriculture and Countryside 'Rural Skills' teaching centre with state-of-the-art facilities
- Myerscough Farms (two farms totalling more than 300 hectares of farm and woodland)
- Comprehensive field study equipment, research and laboratory facilities
- Livestock and cereal enterprises (including 220 commercial Holstein dairy cows, 150 dairy heifers, 1000 ewes, 1800 fattening lambs, a beef enterprise and 40 hectares of cereals)
- A brand new £5m Food, Farming, Innovation and Technology Centre
- Off-road driving course for developing skills with tractors, trailers, 4WD vehicles and quadbikes

### Myexperience

Student Profile

Name: Alan

Age: 15

Home town: Preston

Course: Level One Agriculture



I knew a few people who had done this course in the past so when school offered me the opportunity to attend I jumped at the chance. I get a lot more freedom than at school but in return I have got to be mature and get on with my work. The atmosphere is more relaxed and you can have a laugh whilst you are learning. I feel comfortable at College as it is full of people with the same interests as me. I really enjoy the practical side of the course such as moving cattle and giving them injections. When I leave school I want to go on to an apprenticeship and eventually take over my dad's business in Agricultural Contracting.

Rural Skills Centre



### ABC Level 1 Certificate / Diploma in Land-based Studies – Agriculture

Duration: 1-2 years

Course Day: Wednesday

Course Times: 9.30am – 2.30pm

Location: Preston: Bilborrow Campus

Cost per pupil: £1059 per annum

School Year: 10 and/or 11



#### Overview:

This course is a blend of practical and theory sessions and involves plenty of "hands on activities" on the College farm. The course covers large animals, crops, land management and machinery. Pupils must have an interest in the subject.

#### Entry Requirements:

Successful interview.

#### Course Organisation:

Students will complete the Certificate in year one and Year 10 students will progress to complete the Diploma in year two.

#### Equipment/Clothing Requirements:

Sensible outdoor clothing. Steel toe capped boots/wellingtons.

#### Progression Opportunities:

Related Further Education courses including Agriculture land and wildlife management and agricultural engineering, full time or through an apprenticeship.

#### Assessment Procedures:

Assignments and practical assessment.

Group Size: 10.



### Food and Farming Innovation and Technology (FFIT) Centre

Myerscough College has launched a new project to support the agriculture and food production industries in Lancashire. The new Food and Farming Innovation and Technology centre at Lodge Farm has created a centre of excellence to develop state-of-the-art precision farming techniques within the livestock and grassland sectors. It also provides resources to support the development of local food products.

The two storey building incorporates specialist teaching, demonstration and research facilities (for cattle and feed), including a Livestock Innovation Centre and the latest grassland equipment, livestock feeding technologies, hybrid tractor power units and crop/field trials equipment.

# Animal Studies exploring and investigating the animal kingdom

Preston: Bilborrow Campus

Britain is well regarded as a nation of animal lovers, from companion pets to large animal collections. This has resulted in the development of a multimillion pound industry, ranging from well known national pet feed companies to pet stores, catteries, kennels and numerous other businesses which provide for the needs of animals.

If you care about animals and have a deep interest in their health and wellbeing, Myerscough provides an excellent opportunity for you to further your studies. Working with animals is highly rewarding. It does however require long hours, alongside a genuine passion and dedication.

Our courses cover a wide range of skills, and provide the opportunity to care for companion animals such as dogs, cats, rabbits and ferrets, farm animals and ponies and more exotic species, such as geckos, uromastyx, chameleons and a wide range of invertebrates.

## Resources

Myerscough is home to a purpose built Animal Studies Centre which houses the following facilities:

- An aquarium of tropical, cold water and marine fish, incorporating amphibians and crustaceans
- A specialised herpetology room housing species from all continents, covering a range of habitats
- Cattery – working in partnership with the Blue Cross
- A block of nine day kennels
- A purpose built Sulcata Tortoise enclosure
- Farmyard animals, including goats, sheep, pigs, geese, turkeys, ducks, Shetland ponies, alpacas and emus
- A fully equipped grooming parlour and canine hydrotherapy unit
- Facilities for trial work and research
- Specialist aviaries housing birds from around the world
- A range of commonly kept and exotic species of rodents (including Gambian pouched rats and sugar gliders)
- Free range poultry paddocks housing a large variety of species
- Specialist area dedicated to rabbits and guinea pigs containing spacious enriched pens with a variety of breeds including British and continental giant rabbits and Peruvian Guinea Pigs
- Ferrets housed in purpose built enclosure with indoor and outdoor runs
- Scottish Wildcat enclosure (part of national conservation programme)

## Myexperience

Student Profile

Name: **Ryan**

Age: **14**

Home town: **Ormskirk**

Course: **Level One Animal Care**



I own about 400 reptiles and have always known I want to work in this area when I leave school. I go to a lot of reptile shows and have become friendly with the staff at my local Pets at Home store. They told me about the College and the course. I went back and asked my school if I could attend College alongside my GCSEs. I really enjoy the course and it is very different from school. My tutor is brilliant, she makes me feel it is OK if I need help or I do something wrong the first time. Obviously, my favourite place on campus is the reptile room. When I finish the course I would love to get an apprenticeship working with reptiles or work at Knowsley Safari Park.



## NPTC Level 1 Certificate / Diploma in Land-Based Studies – Animal Care

**Duration:** 1-2 years

**Course Day:** Wednesday

**Course Times:** 9.30am – 2.30pm

**Location:** Preston: Bilborrow Campus

**Cost per pupil:** £1059 per annum

**School Year:** 10 and/or 11

1

### Overview:

This course provides pupils with a practical introduction into the care of a variety of domestic animals. Areas of study will include feeding, cleaning and handling animals. Some time will be spent in the classroom but the majority of time will be spent in the College's purpose built Animal Academy developing practical skills. Pupils must have an interest in the subject and have some prior experience of working with animals.

### Entry Requirements:

Successful interview.

### Course Organisation:

Students will complete the Certificate in year one and Year 10 students will progress to complete the Diploma in year two.

### Equipment/Clothing Requirements:

Waterproof clothing and wellington boots/sensible work boots. Warehouse coat purchased via Animal Care Centre. Files/paper/pens.

### Progression Opportunities:

Related Further Education courses or Apprenticeships.

### Assessment Procedures:

Assignments and portfolio of evidence of practical skills.

**Group Size:** 10.





# English and Maths

## Essential life skills

Preston: Bilsborrow Campus

An understanding of English and Maths is essential in all aspects of life and further study. Myerscough College is offering the opportunity for Home Educated students in years 10 and 11 to study towards a recognised qualification in English and Maths. This can be alongside a vocational College qualification or taken as a standalone programme. Students will spend one day a week studying English and Maths. Due to the limited time available to cover the programme students will be expected to complete further work in their own time guided by resources available on Myerscough's online learning platform.

Myerscough is offering GCSE and Functional Skills programmes. When deciding which programme is most appropriate for individual learners Myerscough will take into account a student's age and current learning level as well as social factors such as ability to manage exam pressure. There is the opportunity for movement between the programmes during the first six weeks of the course.

This programme is only available to students who are electively Home Educated. The bespoke programmes are available at Myerscough's Bilsborrow Campus. There may be the option for Liverpool and Blackburn based students to infill with full time students if they are working at an appropriate level.



### Functional Skills English and Maths

**Duration:** 1 year

**Course Day:** Friday

**Course Times:** 9.30am – 3.00pm

**Location:** Preston: Bilsborrow Campus

**Cost per pupil:** Centrally funded

**School Year:** 10 or 11

1

#### Overview:

This course is aimed at students who are not ready to undertake a full GCSE programme. This may be due to their age, current academic level or social issues such as anxiety. The programme covers many of the skills needed for students to achieve GCSE's at a later date however allows time for basic concepts to be covered and understood.

#### Entry Requirements:

Students must be Home Educated and 14 before the end of August of their start year. Students must be prepared to complete additional study outside of their lesson time. Entry onto this programme can either be alongside a vocational application or as standalone qualification. Students working at below Entry Level 2 or with significant additional needs may be offered the opportunity to join full time English and Maths Foundation learning group in their sessions.

#### Course Organisation:

Year 10 students who successfully achieve the Level One qualification may if appropriate move onto the GCSE provision for year 11. Students must undertake both courses they cannot select either English or Maths.

#### Equipment Requirements:

Students require pens, paper, files and a calculator. Access to an internet enabled computer outside of lesson time is essential.

#### Progression Opportunities:

This qualification is recognised by post 16 providers so can be used when applying for full time courses/apprenticeships.

#### Assessment Procedure:

These qualifications are assessed through one exam for each subject. Myerscough sets the exam dates based on student progress.

**Group Size:** 17. This programme will only run subject to appropriate recruitment.

### GCSE English and Maths

**Duration:** 1 year

**Course Day:** Friday

**Course Times:** 10.00am – 4.30pm

**Location:** Preston: Bilsborrow Campus

**Cost per pupil:** Centrally funded

**School Year:** 10 or 11

2

#### Overview:

This programme is designed to allow students to complete GCSE English Language and Maths before entering post 16 education. Students follow the Pearson Edexcel Specification.

#### Entry Requirements:

Students must be Home Educated and working at a level where they are likely to be able to achieve a GCSE qualification at the end of one academic year. As well as age and academic level the ability for students to manage the pressure of full GCSE exams will also be considered. Students must be prepared to complete additional study outside of their lesson time. Entry onto this programme can either be alongside a vocational application or as standalone qualification.

#### Course Organisation:

Students achieving a Level 4 (former C) or above will not need to retake the GCSE subject in post 16 education. Students will be entered for the Foundation Maths paper unless they are assessed at working at a level appropriate for the Higher paper.

#### Equipment Requirements:

Students require pens, paper, files and a calculator. Access to an internet enabled computer outside of lesson time is essential.

#### Progression Opportunities:

This qualification is recognised by post 16 providers so can be used when applying for full time courses/apprenticeships.

#### Assessment Procedure:

The new GCSE programme is graded on a final examination. These exams run in May/June. The English qualification has two final exam papers and a Spoken Language Endorsement which is listed as a separate item on the GCSE certificate. The maths qualification has three final exams.

**Group Size:** 17. This programme will only run subject to appropriate recruitment.

# Equine Studies

## On course for an equestrian career

Preston: Bilborrow Campus

The equine industry in the United Kingdom is expanding rapidly, with a turnover approaching £4.5 billion per year.

It encompasses many different sectors, from racing, driving and endurance to dressage, horse trials and show jumping. These areas are supported by a large ancillary industry and leisure market which provides extensive career opportunities.

The equine department at Myerscough College has excellent resources. A busy equestrian centre runs affiliated and unaffiliated events as well as being a training and examination centre for British Horse Society qualifications.

Myerscough is well known as one of the leading equine colleges in Britain. The facilities and expert knowledge of the tutors provide an ideal learning environment. The lecturing staff are active in the equine industry, competing and training outside College.

### Resources

- International Arena (85m x 30m) with a heated gallery for 400 spectators
- Indoor school (66m x 20m) with a viewing gallery for 200 spectators
- Two outdoor schools (20m x 60m and 45m x 65m)
- 50+ quality horses on site, of various sizes, breeds and standards, stabled in four professional and friendly yards
- Extensive show jumps
- Cross country fences and horse walker
- GPS heart rate monitors
- Weighbridge and a well-stocked tack shop
- Two dimensional motion analysis software (Quintic and Hu-man) with high speed video camera
- A range of laboratories
- Youngstock and specialist youngstock housing
- Equissage equine specialist motorised massage sets and Zamar therapy
- Anatomical demonstration models
- Coldwater therapy spa and solarium

### Myexperience

Student Profile

Name: **Dylan**

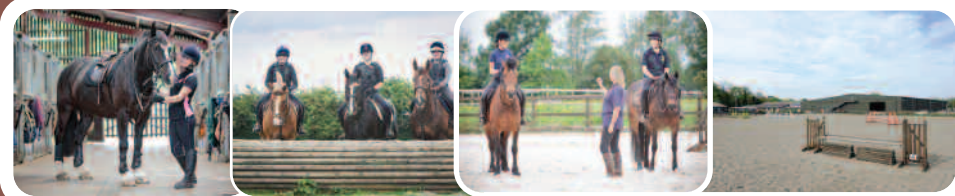
Age: **15**

Home town: **Chorley**

Course: **Level One Horse Care**



I found out about this course whilst looking at the College website. I took the information back to my school to see if I could do the course. I wanted to do this course as I want to be a farrier and I knew this course would help me further my equine knowledge. I enjoy challenging myself to get faster and better at tasks for example we have a time limit to muck out and each week I try and be quicker whilst still doing the job properly. I enjoy coming to college as it is a much more professional environment than school so it gets me ready for getting a job.



### NPTC Level 1 Certificate / Diploma in Land-based Studies – Horse Care

Duration: 1-2 years

Course Day: Wednesday

Course Times: 9.30am – 2.30pm

Location: **Preston**: Bilborrow Campus

Cost per pupil: £1057 per annum

School Year: 10 and/or 11



#### Overview:

This course is very practical in its content and will include units on feeding and watering horses, horse health, caring for horses and exercising horses. Most of the course is based on the equine stable yard but some work will be in a classroom. Pupils must have a strong interest in looking after and caring for horses. The riding of College horses is subject to ability and experience.

#### Entry Requirements:

Successful interview. This course is unsuitable for very novice riders/handlers.

#### Course Organisation:

Students will complete the Certificate in year one and Year 10 students will progress to complete the Diploma in year two.

#### Equipment/Clothing Requirements:

Black or navy jodhpurs and sweatshirt. Dark jacket. Long or short riding boots. Approved riding hat. Gloves and short whip. Body protector (only required if riding). Pen, folder and paper.

#### Progression Opportunities:

Related Further Education courses or Apprenticeship.

#### Assessment Procedures:

Multiple choice exam, assignments and portfolio of evidence of practical skills.

Group Size: 12.

### Myexperience

Student Profile

Name: **Chloe**

Age: **15**

Home town: **Preston**

Course: **Level One Horse Care**



I have been coming to the College open day every year with my grandad since I was little and always wanted to be a student at the College. Last year my tutor arranged for me to ride in the parade of College horses during open day which was brilliant. I have enjoyed getting a better knowledge of horses during the course and doing something I love as a qualification. I really enjoy the riding sessions. When I leave school I want to continue at College and eventually become an equine physiotherapist.





# Floral Design

## Creative flair in full bloom

Preston: Bilborrow Campus

**The floral design industry now reaches far beyond the traditional confines of high street retailing. Employment opportunities continue to grow in this country and abroad, as the sector diversifies and expands.**

The industry now employs more than 25,000 people and the fresh cut flower market alone is worth more than £1.5 billion to the UK economy.

Myerscough celebrated its Floral Design Silver Jubilee in 2012, having been at the forefront of floristry teaching for more than 25 years. It is regarded as one of the leading colleges in the country for floristry, winning the prestigious BFA Training Provider of the Year award. We have some of the most advanced design studios in the country, having recently invested more than £250,000.

### Resources

- Five floral design studios equipped with stainless steel custom made workbenches, flower food dosing units, sinks, display units, state of the art photography areas in all rooms to aid portfolio design, visual aid equipment
- Experienced professional floristry tutors (ICSF and NDSF holders)
- Comprehensive range of teaching equipment and accessories
- Design and craft workshop facilities
- Exciting range of International visiting guest speakers, design workshops and master classes
- Dedicated foliage borders
- Walk in cold store

Our courses are highly practical and creative, taught by our well qualified and experienced floristry team. They equip students with the range of knowledge and skills required for successful careers in the industry.

### Floristry at Bilborrow Campus

For 2019/20 there will be no formal course offer for 14-16 Floristry at Bilborrow. However, if individual schools or EHE groups have appropriate cohorts of approximately eight students, we are happy to discuss bespoke provision. This might be a full year accredited programme or something more appropriate for individual groups of learners both in content and curriculum time. We are happy to support courses such as ASDAN or employability skills that are running within schools with some specialist input for a shorter amount of time. We can also provide enrichment courses that compliment work done around post 16 progression and options. Please contact the 14-16 Co-ordinator on 01995 642222 ext. 2593 for further details





# Horticulture & Landscape Construction

## Shaping the future of the land

Preston: Bilsborrow Campus



The Horticulture and Landscape construction industries are currently experiencing strong growth. Career opportunities are widely available and varied. According to the Royal Horticultural Society the horticulture industry is the largest employer in the UK, supplying 18 million gardeners. It is estimated that the landscape industry is made up of nearly 8,000 businesses employing approximately 140,000 people.

Students completing courses in this area will have the basic skills and knowledge to go onto careers in the horticulture, landscape, sportsturf or construction industries. Potential employers include local authority departments, parks and gardens; domestic and commercial landscape companies, garden centres, sporting venues, private gardens and grounds maintenance contractors. Students can also go on to specialise in one of the construction trades such as building, joinery or plumbing.

### Resources

- Extensive plant collection
- Five hectares of ornamental features and landscaped gardens
- A range of display greenhouses featuring four different environmental regimes
- A dedicated nursery stock production unit
- Commercial plant centre
- An extensive area of woodland
- A purpose build teaching unit comprising four fully equipped landscape and construction workshops
- A wide range of maintenance equipment and tools

### Level One Certificate/Diploma in Landscape Garden Design and Construction

1

**Duration:** 1-2 years

**Course Day:** Wednesday

**Course Times:** 9.30am – 2.30pm

**Location:** Preston: Bilsborrow Campus

**Cost per pupil:** £1057 per annum

**School Year:** 10 and/or 11

#### Overview:

This practical course is an ideal first step towards a career in Landscape garden design and Construction, it provides a basic introductory 'hands on' approach. The course will involve hard and soft landscape skills, design and construction. It provides basic skills for progression onto training for a wide range of trades or apprenticeships including horticulture, landscape, arboriculture and sportsturf.

#### Entry Requirements:

Successful interview.

#### Course Organisation:

Students will complete the Certificate in year one and Year 10 students will progress to complete the Diploma in year two.

#### Equipment/Clothing Requirements:

Outdoor work clothes and steel toe capped boots/wellingtons.

#### Progression Opportunities:

Related Further Education and apprenticeship including horticulture, landscape, arboriculture and sportsturf courses.

#### Assessment Procedures:

Assignments, assessments and portfolio of evidence of practical skills.

**Group Size:** 10.

### Myexperience

Student Profile

Name: **Leon**

Age: **15**

Home town: **Preston**

Course: **Level One Landscape Garden Design and Construction**



I am really interested in becoming a Tree Surgeon when I am older. I talked to my school and they found me the course at Myerscough. College is great. I enjoy the challenge of learning new skills. So far, my favourite task has been levelling which is getting an area level ready to flag it. I would love to come to College full time when I leave school to do an Arboriculture Course. I have already recommended the College and my course to some of my friends at school.





# Motor Vehicle Studies

Kick start your career at the front of the grid

Preston: Bilborrow Campus

The British motorsports industry is recognised as the best in the world with Britons at the heart of a vast range of worldwide motorsport activities. It is a huge industry employing people in businesses from retail performance specialists to preparation companies, with many Formula One and World Rally Teams based in the UK.

Myerscough College has nine motorsport workshops and a number of different competition cars for the continuing development and expansion of motorsport teaching.



## Resources

- A comprehensive range of circuit race cars, rally cars and support vehicles
- Nine Motorsport workshops with dedicated areas for competition repair, engine building and special projects
- Engine, gearbox and chassis rigs
- Data analysis monitors
- Specialist diagnostic equipment
- 12 experienced motorsports staff

## Myexperience

Student Profile

Name: **Arizona**

Age: **15**

Home town: **St Annes**

Course: **Level One Motor Vehicle**



I found out about this course when I came to the College Open Day. I then looked it up on the internet and took the information into the school. I enjoy the hands on practical work. There's always something different to do which I enjoy. The College has a different atmosphere than at school. Everyone shows each other much more respect. When I leave school I want to carry on at College and eventually work on a rally team or become a mechanic in the army.



## ABC Level One Award/Certificate in Motor Vehicle

Duration: 1-2 years

Course Day: Wednesday

Course Times: 9.30am – 2.30pm

Location: **Preston: Bilborrow Campus**

Cost per pupil: £1039 per annum

School Year: 10 and/or 11

1

### Overview:

This qualification covers a broad range of areas within the subject of motor vehicle maintenance. Modules will include health and safety, fuel and lubrication systems, vehicle electrical systems and routine maintenance.

### Entry Requirements:

Successful interview. A keen interest in motorsports.

### Course Organisation:

Students will complete the Award in year one and Year 10 students will progress to complete the Certificate in year two.

### Equipment/Clothing Requirements:

Overalls and steel toe capped boots (please contact College for the latest standard required).

### Progression Opportunities:

Related Further Education courses.

### Assessment Procedures:

Ongoing practical assessment and portfolio of evidence.

Group Size: 8.





# Photography

Focus on your new career

Preston: Bilborrow Campus

If you enjoy taking photographs and would like to develop your hobby into a career, then Myerscough is the ideal place to achieve that goal. Our picturesque surroundings offer students the chance to develop their photographic skills and share their creative passion.

The photographic industry is currently experiencing unprecedented change with the development of the internet, social media and fragmentation of the traditional workplace. In a recent survey undertaken by the British Photographic Council 73% of professional photographers believed that formal photography qualifications were "essential and valuable". Successful photographers now need to be increasingly flexible in their approach as traditional routes into a photographic career evolve.

Career opportunities in photography are varied – from fashion, commercial, travel, sports and portraiture to education, advertising.

## Resources

- Picturesque campus ideal for enhancing photography skills
- A photography dark room, ideal for learning skills and techniques associated with processing and printing of photographic materials
- Professional level camera equipment
- A computer-aided design studio for digital imaging
- Photographic studio
- A professional grade studio lighting system

## Myexperience

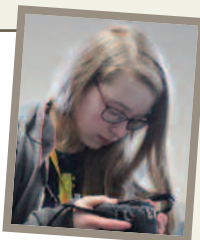
Student Profile

Name: **Emily**

Age: **15**

Home town: **Blackburn**

Course: **Level One Photography**



When I was 12 I came to a College Summer Open Day. When I looked round the photography unit I really liked it so I applied for the course as soon as I was old enough. I really enjoy socialising with people who have the same interests as me. I also love using the professional equipment. Next year I hope to do the Level Three photography course at College.



## Level One Award/Certificate Photography

Duration: 1-2 years

Course Day: Wednesday

Course Times: 9.30am – 2.30pm

Location: **Preston: Bilborrow Campus**

Cost per pupil: £1018 per annum

School Year: 10 and/or 11



### Overview:

This qualification is practical in its nature, exploring aspects such as image capture, digital manipulation and presentation.

### Entry Requirements:

Successful interview. A keen interest and enthusiasm in photography.

### Course Organisation:

Students will complete the Award in year one and Year 10 students will progress to complete the Certificate in year two.

### Equipment/Clothing Requirements:

Camera desirable but not essential, sketch book and pens/pencils. Sturdy footwear and warm outdoor clothing.

### Progression Opportunities:

Related Further Education courses.

### Assessment Procedures:

Assignments, assessments, portfolio building and practical skills.

Group Size: 14.





# Blackburn

## Witton Park, Blackburn

All courses offered to 14-16 year olds at Blackburn in 2018/19 are as a part time infill with post 16 full time courses. 14-16 students will join identified groups on specific days to access units leading to a qualification. If any course recruits sufficient numbers to run as a bespoke 14-16 programme then this will be considered. Students may be able to access more than one day to build their qualification. These courses will follow the College term dates.

Myerscough can provide some support for Electively Home Educated students with identified needs. Myerscough will work with home school to provide support for school students.



### Entry Level 2/3 Award in Skills for Working Life

**Duration:** 1 year  
**Course Day:** 1-3 days per week  
**Course Times:** 9.30am – 4.30pm  
**Location:** Blackburn: Witton Park  
**Cost Per Pupil:** £1080  
**School Year:** 10 or 11



#### Overview:

Depending on the day accessed, this course contains elements of Small Animal Care, Horticulture and Agriculture and Countryside. The course is very practical in its content. Most of the course is practical and is based in the animal unit or across the Park.

This course is appropriate for students with a range of additional needs or for students requiring a structured transition onto full time programmes. Students should be working at entry levels. Course areas covered and course level is dependent on the individual and the day(s) accessed.

**Entry Requirements:**  
 Successful interview.

**Course Organisation:**  
 Students will join in with full time student lessons.

**Equipment/Clothing Requirements:**  
 Sensible outdoor clothing. Sturdy boots/wellingtons.

**Progression Opportunities:**  
 Related Full Time Courses

**Assessment Procedures:**  
 Practical assessments. There are no formal examinations.

# Liverpool

## Croxteth Park and Bowring Park

### Entry Level 3 Certificate Animal Care

**Duration:** 1-2 years  
**Course Day:** Thursday  
**Course Times:** 9.30am – 2.30pm  
**Location:** Liverpool: Croxteth Park  
**Cost per pupil:** £1047 per annum  
**School Year:** 10 and/or 11



#### Overview:

This course is very practical in its content and will cover a variety of small animal care skills. The animal care centre at Croxteth is based on the farm within the Country Park and has a vast range of small animals.

**Entry Requirements:**  
 Successful interview.

**Course Organisation:**  
 Year 10 students who progress well may move onto the second year of the programme. Students may join the course in September or January (if spaces available).

**Equipment/Clothing Requirements:**  
 Sensible outdoor clothing. Steel toe capped boots/wellingtons.

**Progression Opportunities:**  
 Related Further Education courses.

**Assessment Procedures:**  
 Practical and theory assessment.

**Group Size:** 12.

**Credit value:** 22.

### Horse Care

**Duration:** 1-2 years  
**Course Day:** TBC  
**Course Times:** 9.30am – 4.30pm  
**Location:** Liverpool: Croxteth Park  
**Cost per pupil:** £1110  
**School Year:** 10 and/or 11



#### Overview:

This course is delivered as an 'infill' with full time post 16 learners. 14-16 students will join the group one or two days a week to complete individual units. Topics and opportunity to ride depend on the day(s) attended and student ability. Learners will work towards an unaccredited Myerscough Certificate.

This qualification is designed for students who want to follow a 'hands on' practical route in horse care. The full programme covers a wide range of practical skills required when working with horses. These include feeding, grooming, handling, fitting of equipment as well as basic riding skills.

**Entry Requirements:**  
 Successful interview. A basic ability in handling horses. This programme is unsuitable for very novice riders/handlers.

**Course Organisation:**  
 Students will join in with full time student lessons. If recruitment is sufficient, a bespoke 14-16 Level One course may be offered.

**Equipment/Clothing Requirements:**  
 Black or navy jodhpurs and sweatshirt. Dark jacket. Long or short riding boots. Approved riding hat. Gloves and short whip. Body protector (only required if rising). Pen, folder and paper.

**Progression Opportunities:**  
 Related Full Time Courses / Apprenticeships.

**Assessment Procedures:**  
 Practical and theory assessment.

# Liverpool

## Croxteth Park and Bowring Park

### Level One Horticulture

**Duration:** 1-2 years

**Course Day:** TBC

**Course Times:** 9.30am – 4.30pm

**Location:** Liverpool Croxteth Park  
Liverpool Bowring Park

**Cost per pupil:** £1107

**School Year:** 10 and/or 11

#### Overview:

This course is delivered as an 'infill' with full time post 16 learners. 14-16 students will join the group one or two days a week to complete individual units. Units depend on the day(s) attended and student ability. Learners will usually end up with an Award or Certificate qualification but may be able to build this to a full Diploma qualification over two years if they attend for sufficient time.

This qualification is an ideal first step towards a career in horticulture. It provides a basic hands on programme of study and covers a wide range of important skills that are required when working with plants such as planting, maintenance of grass and lawns, propagation and tree pruning. It also provides a general introduction to land-based and environmental issues.

#### Entry Requirements:

Successful interview. A keen interest in horticulture.

#### Course Organisation:

Students will join in with full time student lessons. If recruitment is sufficient, a bespoke 14-16 Level One course may be offered.

#### Equipment/Clothing Requirements:

Sensible outdoor clothing. Steel toe capped boots/wellingtons.

#### Progression Opportunities:

Related Full Time Courses / Apprenticeships.

#### Assessment Procedures:

Practical and theory assessment.



# Warrington

## Walton Hall Park

### Level One Horticulture

**Duration:** 1-2 years

**Course Day:** TBC

**Course Times:** 9.30am – 4.30pm

**Location:** Walton Hall Park

**Cost per pupil:** £1107

**School Year:** 10 and/or 11

#### Overview:

This course is delivered as an 'infill' with full time post 16 learners. 14-16 students will join the group one or two days a week to complete individual units. Units depend on the day(s) attended and student ability. Learners will usually end up with an Award or Certificate qualification but may be able to build this to a full Diploma qualification over two years if they attend for sufficient time.

This qualification is an ideal first step towards a career in horticulture. It provides a basic hands on programme of study and covers a wide range of important skills that are required when working with plants such as planting, maintenance of grass and lawns, propagation and tree pruning. It also provides a general introduction to land-based and environmental issues.

#### Entry Requirements:

Successful interview. A keen interest in horticulture.

#### Course Organisation:

Students will join in with full time student lessons. If recruitment is sufficient, a bespoke 14-16 Level One course may be offered.

#### Equipment/Clothing Requirements:

Sensible outdoor clothing. Steel toe capped boots/wellingtons.

#### Progression Opportunities:

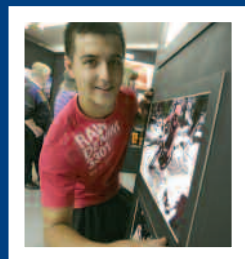
Related Full Time Courses / Apprenticeships.

#### Assessment Procedures:

Practical and theory assessment.







# Choose Myerscough

## Make us your number one choice!

- Top 10% of FE colleges nationwide for academic success amongst 16-18 learners.
- Ofsted rated Good (March 2017) with 'highly effective' teaching.
- £30 million campus building programme.
- Gold medal winning gardens designed at RHS Chelsea and Southport Flower Show.
- 98%+ student satisfaction with teaching and advice from tutors.
- Winner of the Lancashire Red Rose Awards 'Skills Provider of the Year' for 2018/19.
- Awarded prestigious 'Leaders in Diversity' accreditation (March 2017).
- Myerscough Gardens voted Best Small Tourist Attraction at North West in Bloom for six consecutive years (2012-2017).
- National centre of sporting excellence in Football, Rugby, Golf, Cricket, Basketball and Netball.
- Category winners at the IOG Groundsman of the Year Awards.
- Farmers Weekly top-ten centre for studying agriculture.
- Triple winners at British Florist Association Annual Awards.
- One of the UK's largest providers of land-based apprenticeship training.
- 2016 Worldskills Gold Medal winner in Landscaping.
- Friendly, safe and supportive campus environment.



**Myerscough  
College**

[www.myerscough.ac.uk](http://www.myerscough.ac.uk)

Myerscough College,  
Bilsborrow, Preston,  
Lancashire PR3 0RY  
Tel: 01995 642222 Fax: 01995 642333  
Email: [enquiries@myerscough.ac.uk](mailto:enquiries@myerscough.ac.uk)

Course Enquiries 0800 652 5592