



Myerscough
College

In partnership with



Open Day and Country Fair

Sunday 11th June 2017

Action packed fun for all the family.



LOTS TO SEE & DO ACROSS THE ENTIRE CAMPUS -
FROM THE **COUNTRY FAIR** TO THE **SPORTS PITCHES**

IN SUPPORT OF



Welcome

Welcome to our Open Day and Country Fair

This annual occasion is now well established as a regional event and this year, once again, we believe that it is bigger and better than ever. It provides a real opportunity to explore Myerscough and the breadth of what the College has to offer.

We are all very proud here at Myerscough that in our recent OFSTED inspection we were rated as a 'good' college, setting high expectations for learners and staff, and providing high quality vocational learning that responds to local, regional and national needs. We remain one of the best choices for learners wishing to study in the land-based and sport sectors, with high student achievement, satisfaction rates and employment prospects.

There are many activities and displays scheduled throughout the day so check the programme and listen for the tannoy announcements.

Enjoy your day and we hope to see you back at Myerscough soon.



For Main
Venue
Attractions
see page 8



Pick up a copy of our
NEW Part-Time &
Short Course guide

More than 300 courses for
work, education & leisure

For further information about courses at
Myerscough College, please contact
Course Enquiries on 01995 642211 or
email enquiries@myerscough.ac.uk

Myerscough College, Bilsborrow,
Preston, Lancashire PR3 0RY
Tel: 01995 642222
www.myerscough.ac.uk

SEE YOU AGAIN NEXT YEAR - SUNDAY 10TH JUNE 2018

My success My future My ambition My course My Myerscough



Choose Myerscough - Make us your number one choice!

We offer a superb range of full-time and part-time courses across more than 20 different land-based and sports subjects. There's literally something for everyone – for all ages and all experience levels.

- £30 million ongoing campus development programme
- 95%+ students satisfaction with teaching, learning & support
- OFSTED rated GOOD (March 2017) with 'highly effective' teaching
- OFSTED rated OUTSTANDING for Care & Support of Residential Students
- 98% of learners in employment or study within six months of graduation
- National Centre of Excellence in rugby, football, golf, cricket, & basketball with international call-ups for students
- Five times national basketball champions in 2017
- One of the largest land-based apprenticeship providers in the UK
- Best QAA report in the country including two commendations & ten areas of good practice recognised – one of the best reports in the country
- Awarded prestigious 'Leaders in Diversity' accreditation (March 2017)
- LBV Red Rose Awards finalists in 2016 & 2017 in category 'Skills Provider of the Year'
- Myerscough Gardens voted Best Small Tourist Attraction at North West in Bloom for five consecutive years (2013-2017)
- Awarded High Sheriff of Lancashire commendation 2017 for 'great & valuable services to the community'
- Double Gold medal winners at Southport Flower Show 2016
- 2017 RHS Chelsea Florist of the Year



Myerscough
College

uclan | Myerscough
University of Central Lancashire | Associate School

These are just a few headline figures from the last 12 months. For more information about our campus developments, external partnerships and student achievements visit the news pages on the College website at www.myerscough.ac.uk



Use our numbered campus map in the centre of the programme to guide you around the College campus. The numbers shown in brackets relate to the key on the map. All activities run throughout the day, unless otherwise stated. For catering, toilets and emergencies see page 9 and map.

PLEASE NOTE THAT ALL ACTIVITIES AND TIMES ARE LISTED AS THEY WERE AT TIME OF PRINT AND THEY ARE ALL SUBJECT TO CHANGE

Education & Careers (25)

Central careers and course advice including part time courses

Brock Meadow – Country Fair (32)

Timetable for Arena events on Page 8

Careers advice	All Day
Milking demonstrations	All Day
Sheep shearing demonstrations	All Day
"Have a go" fishing	All Day
Acorn Woodcraft	All Day
Airgun Training and Education Organisation	All Day
Animals Asia Foundation Bolton Branch	All Day
Army	All Day
Blackpool Sporting Clays	All Day
British Association for Shooting and Conservation	All Day
British Deer Society	All Day
Ian Burns – Stick and whip maker	All Day
Campaign to Protect Rural England Lancashire Branch	All Day
Canal and River Trust	All Day
Cosydogs	All Day
Cuerden Valley Park	All Day
Dogs for Life	All Day
Dry Stone Walling Association	All Day
European Plummer Terrier Society	All Day
FlyTek	All Day
Gift 92	All Day
I K & A M Grisedale – Herdwick Sheep Breeders Association	All Day
Heritage Trust North West	All Day
Lakeland Gundog Club	All Day
Lamberts (Lancaster) Ltd	All Day
Lancashire and NW Beekeepers Association Preston Branch	All Day
Lancashire Constabulary Rural Policing and Wildlife	All Day
Lancashire Federation of Women's Institutes	All Day
Lancashire Federation of Young Farmers Clubs	All Day
Lancashire Wildlife Trust	All Day
Lancaster and Morecambe Voluntary Police Cadets	All Day
Terry Large Falconry	All Day
Millie and Ruby's Dog Bakery	All Day
National Gamekeepers' Organisation	All Day
North West 4x4 Response	All Day
North West Air Ambulance	All Day
Pip Cottage	All Day
Preston Agility Dogs	All Day
Rare Breeds Survival Trust Lancashire	All Day
Red Rose Woodturning Club	All Day
Retired Police Dog Benevolent Team	All Day
Ribble Rivers Trust	All Day
Riverco Trading – Natural garden furniture	All Day
Royal Navy – Youth Engagement Team	All Day
Royal Society for the Protection of Birds	All Day
Bill Sanders – Sussex Trug Maker	All Day
Shake Magic	All Day
South Cumbria and North Lancashire Military Vehicle Trust	All Day
Sweets	All Day
The National Trust - Rufford Old Hall	All Day
The Royal British Legion	All Day
The Shaka Shack	All Day
Charles Taylor Trading	All Day
Timberbuild Dog Kennels Ltd	All Day
Vale of Lune Harriers	All Day
West Lancashire Police Cadets	All Day
Westmorland Red Squirrel Society	All Day
Woodland Trust	All Day

TIME
All Day

Wyre District Scouts
Wyrebank
Yamba UK – Archery

All Day
All Day
All Day

Brock Meadow - Theatre of Food Marquee (32)

Honeywells – A celebration of local food, farmers and producers. Quality produce that's fresh from their farm, straight from their neighbours, or sourced from an exciting network of food artisans. www.honeywellfarmshop.com 01772 690271

The Cartford Inn - Multi award-winning pub, restaurant and boutique hotel located at the historic crossing of the River Wyre in the heart of rural Lancashire looking across the quietly beautiful Bowland fells. www.thecartfordinn.co.uk 01995 670166

Tim Maddams – A private chef, writer, cookery teacher and presenter living in Devon who has worked with such culinary luminaries as Fergus Henderson, Alistair Little, Marco Pierre White and Mark Hix, as well as a stint managing VIP catering for the Ferrari F1 team in Europe. He has led the team at River Cottage Axminster, where he regularly appeared alongside Hugh Fearnley-Whittingstall on both the River Cottage series on Channel 4 and the Fish Fight campaign. He continues to indulge his interest in broadcasting with occasional appearances on various foodie shows, such as Channel 4's Sunday Brunch and BBC Food and Drink.

Brock Meadow – Food and Drink Producers (32)

Barrica Wines – Multi award winning independent wine merchant focusing on wines and beers not widely available on the high street and excelling in customer service. They will be showing a selection of lovely drinks to try and buy. www.barricawines.co.uk 07469220583

Choc Amor – Lancashire based multi award winning chocolatiers whose speciality is small batch flavoured chocolate using Belgian single origin couverture. Twenty flavours in their range including salt liquorice, chilli cappuccino and orange jalfazi. Go along for a tasting. www.chocamor.co.uk 01704 822633

Fieldside Honey – Speciality honey products and country produce. www.fieldsidehoney.co.uk 07753836742

Hannah's Country Kitchen – Homemade chutneys, jams and sauces. www.hannahscountrykitchen.co.uk 07920039065

Jeni's Cupcakes – Cupcakes and brownies in a variety of flavours. www.jenicupcakes.co.uk 07810281226

Mrs Kirkham's Cheese - Award winning Lancashire cheese made by the family for over 35 years using only the raw milk from their own cows and has a creamy fluffy texture following the same recipe that has been in the family for 4 generations. www.mrskirkhamscheese.co.uk 01772 865335

Myerscough Meats and Bowmans Pies - Top quality, home bred and reared, quality assured meat. Selling beef, lamb, chicken and pork and a range of pies made with the delicious beef and lamb produced at the Colledge.

Park Farm Tea Rooms – Offering homemade products, baked to perfection. Open Day specials will include 3 pasties for £5 (traditional, tractor wheel cheese and chutney, feta and sundried tomato). Speciality scones, luscious lemon, raspberry and white chocolate, blueberry, using all traceable products and their own free range eggs and milk. www.parkfarmshopramsbottom.co.uk 01706 823584

Proctor's Cheeses – Locally produced waxed artisan cheeses. www.proctorscheeses.co.uk 01995 61626

Pudding and Pie Café – Homemade pies from local produce for take home consumption. 01772 681948

Red Bank Cider – Bolton based producing 'award' winning ciders, perry and fruit wines all made locally. Range of different flavours of fruits plus plain still cider. www.redbankcider.co.uk 01204 402222

Shirley's Pies - Handmade premium quality pies made with the finest local ingredients www.shirleypies.com 01253 813646

Susan's Farmhouse Fudge – Quality homemade fudge made with British sugar, butter and farm fresh cream including gluten free. Coconut-ice, Turkish Delight, nougat, candy cables, handmade twistles and chocolates. 01772 877468

The Cumbrian Pie Company - Makers and purveyors of some of the finest pork and vegetarian pies made from almost the heart of the Lake District. 07830341200

The Magnificent Marshmallow Company – Handmade marshmallows in a feast of flavours from fruits, oils and natural flavourings. www.themagnificentmarshmallowcompany.com 07971498199

The Wilde Bakery – Artisan bakery with an extensive range of unusual flavoured flapjack. 07876536863

What's On

Brock Meadow – Arboriculture (32)

Myerscough staff and students tree climbing/spiking event in aid of Macmillan Cancer Support

“Have a go” children’s climbing event

TIME

All Day

All Day

Landscape (33)

Careers advice

Display of sportsturf machinery

Makita

All Day

All Day

All Day

Apprenticeships and Skills (by 35)

“Have a go” bricklaying and paving

“Have a go” mini digger challenge

“Have a go” decorating a cupcake

“Have a go” making a buttonhole

“Have a go” planting

All Day

All Day

All Day

All Day

All Day

Floristry (36)

Careers advice

Floristry demonstrations

“Have a go” activities

Display of student work

Selfie arch

All Day

All Day

All Day

All Day

All Day

Photography (36)

Careers advice

Photography exhibitions

All Day

All Day

Horticulture (below 36)

Kitchen garden open

“Have a go” activities

Plant sales

Turf doctor

All Day

All Day

All Day

All Day

Myerscough Gardens (31)

“Have a go” children’s activities

Bowland Forest Gliding Club

Cardiac Risk in the Young

Cotton Candy Co

Essensi Photography

Face painting

Inflatable Village

Lucky Numbers and Sweet Stall

Myerscough Students Union/Bilsborrow John Cross School

Punch and Judy

Support Mandy

The FIG Tree (Garstang) CIC

All Day

All Day

All Day

All Day

All Day

All Day

All Day

All Day

All Day

All Day

All Day

All Day

Plant World (29)

Plant World Garden Centre

All Day

Fledglings Nursery (27)

Please note all children must be supervised by a parent or guardian. No crèche facilities.

Children’s activities

11.00am-3.00pm

Foundation Learning Centre (37)

“Have a go” handling small animals

“Have a go” boules

“Have a go” Boccia

Snail racing

Tombola

Hanging basket sales

All Day

All Day

All Day

All Day

All Day

All Day

Mechanisation and Engineering (by 39)

Tractor and machinery display

Remote control cars

Express Cutting and Welding Services Ltd

Red Rose Landrover Club – enjoy a gentle off road riding experience

All Day

All Day

All Day

All Day

Motorsports and Motor Zone (below 40)

Timetable for Arena events on Page 8

Careers advice

Rally, race car and motorbike display

3Sixty Bicycle Stunt Team

Arnold Clark

Blackpool and Fylde Advanced Motorists

Emergency Mobile Medical Unit

Forget-me-Not Preston

Garstang and District Motor Club

Gator Hire UK Ltd

Gemini Motorsport Communication

Highways England

Jaguar static displays

MG Club

Motorsport Mugs

RAC

Regent Park Studios CIC

Rocket Centre

St Catherine’s Hospice

Vantage Toyota Preston

Westfield Sports Car Club

All Day

All Day

All Day

All Day

All Day

All Day

All Day

All Day

All Day

All Day

All Day

All Day

All Day

All Day

All Day

All Day

All Day

All Day

All Day

All Day

Central Core (below 37 and 41)

Myerscough College Human Resources

Blue Volcano Tie Dye T Shirts

Caritas Care

Community Foster Care

Elves in the Wood

Girlguiding

Lancashire County Council Fostering Service

Procter’s Cheeses Ltd

Susan’s Farmhouse Fudge

The Gift Box

Utility Warehouse Discount Club

All Day

All Day

All Day

All Day

All Day

All Day

All Day

All Day

All Day

All Day

All Day

Animal Studies (41)

Careers advice and talks

Come and meet the animals

Hydrotherapy demonstrations

Visit the Blue Cross cat rehoming centre

Watch the critically endangered Scottish wild cats be fed

Blue Cross

Cats in Crisis

Cats Protection Preston Branch

Dog Aid – Assistance in Disability

Dogs for Good

Manchester and Cheshire Dogs’ Home

North West Reptile Club

Oscar Pet Foods

SASD Husky Welfare

UK German Shepherd Dog Rescue Angels Ltd

All Day

All Day

All Day

All Day

All Day

All Day

All Day

All Day

All Day

All Day

All Day

All Day

All Day

All Day





What's On

Farriery (42)

Careers advice
 Shoe making and tool making demonstrations by staff and students plus your chance to buy a hand-made lucky horseshoe
 Shoeing dummies
 Lancashire Constabulary Mounted Branch
 Police Horse Benevolent Fund

Veterinary Nursing (43)

Careers advice
 "Have a go" bandaging of stuffed dogs
 "Have a go" treasure hunt
 "Have a go" operation game
 "Have a go" feely boxes
 Creepy crawly corner
 Operating theatre/radiography room open

Library (3)

Library open

Arboriculture (49)

Careers advice

Equine Arena (45)

[Timetable for Arena events on Page 8](#)

Careers advice
 MyTack shop open
 Barkers SsangYong
 Horses and Ponies Protection Association
 Lancashire Constabulary Police Dog Unit

Motor Zone (above 23)

Autotesting – Clitheroe and District Motor Club

Stumble Inn (50)

Creeping Bentgrass – Live music
 "Have a go" netball shooting

Sports Centre (20)

[Timetable for Arena events on Page 8](#)

Careers advice
 Gym Open – Show and tell (about equipment)
 Open Day only membership offers
 Gym challenges
 Exercise technique and advice
 Golf Academy open

Golf Academy (22)

"Have a go" golf nearest the pin

Putting Green (21)

"Have a go" putting

Sports Pitches (above 17)

[Timetable for Arena events on page 8](#)

Tractor rides

11.00am-5.00pm

TIME

All Day

All Day

All Day

All Day

All Day

All Day

All Day

All Day

All Day

All Day

All Day

All Day

All Day

All Day

All Day

All Day

All Day

All Day

All Day

All Day

All Day

All Day

All Day

All Day

All Day

All Day

All Day

All Day

All Day



MYERSCOUGH CONFERENCE CENTRE

The ideal location for your next meeting, training event or business breakfast.

Myerscough offers quality provision, flexibility and, of course, great value for money.

For further information please look on the Myerscough College website under 'Commercial Services', or contact the Facilities Co-ordinator, Marianne Winstanley, on 01995 642284.



Myerscough College



Honeywell's Farm Shop: celebrating food and farming in Lancashire

10 members of the family, decades of hands-on farming experience, and a traditional approach to butchery combine to make Honeywell's what it is today: a celebration of local food, farmers and producers.

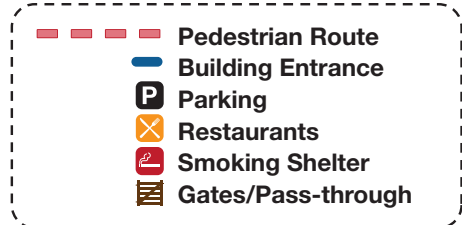
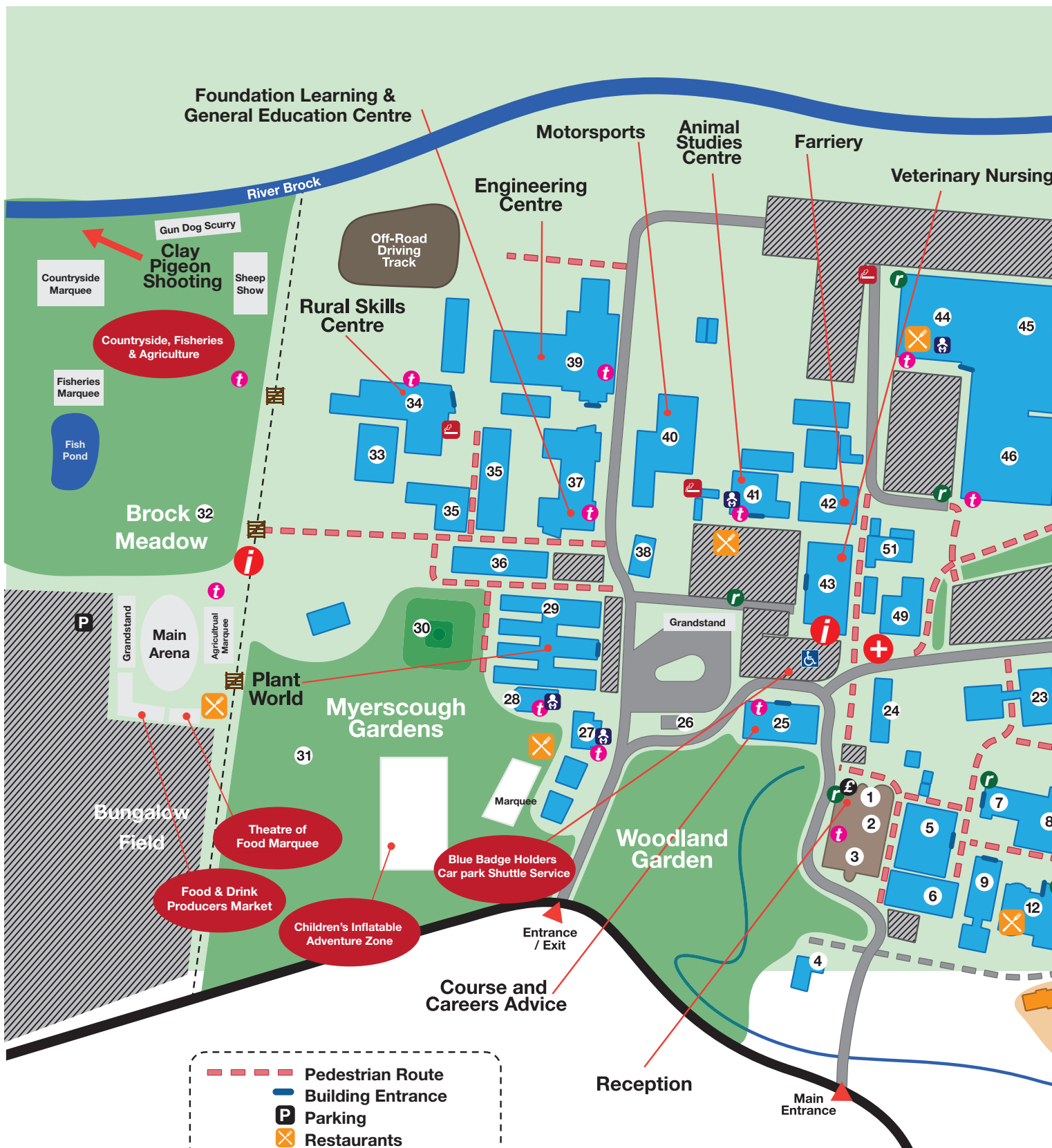
Stock up on quality produce that's fresh from our farm, straight from our neighbours, or sourced from an exciting network of food artisans.

The connection between the food in your basket and Lancashire's best farmers and growers has never been stronger.

A: Honeywell Meats, Eaves Lane, Woodplumpton, Preston, PR4 0BH
 T: 01772 690 271 | E: honeywellmeats@aol.com
 W: www.honeywellfarmshop.com

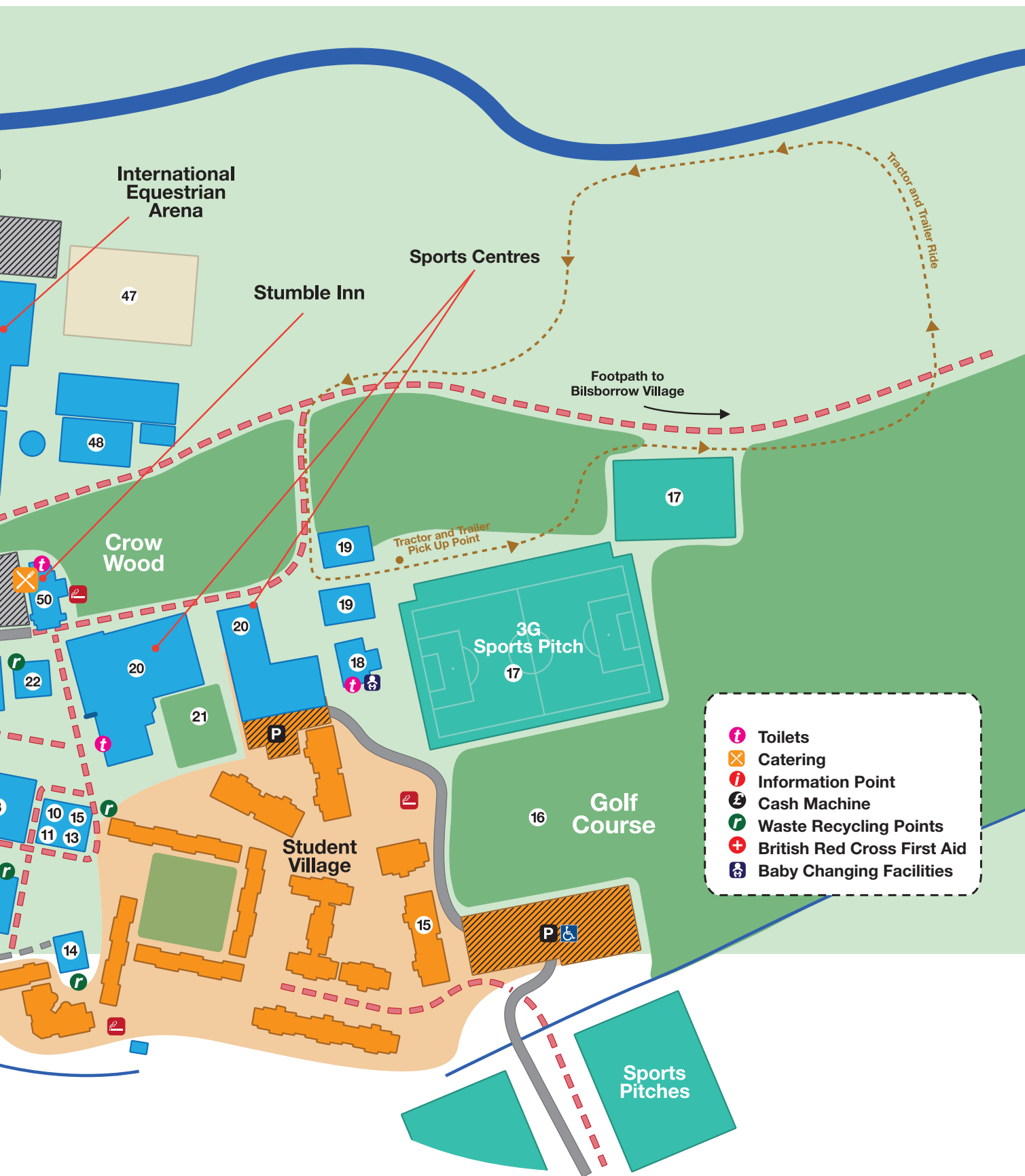
To contact us at our Barton Grange Farm Shop outlet, T: 01995 642 964
 To contact us at our Bents Garden and Home Food Hall outlet, T: 01942 266 300 ext 706

The College's photographers will be present at Open Day, taking pictures of the various activities. In this context we wish to inform visitors that they may be photographed during the course of the day and that by entering the College campus they agree to these terms. These images will only be used in College publicity. For further information please contact the Marketing Team: marketing@myerscough.ac.uk



Key

- | | | |
|-------------------------------------|----------------------------------|---|
| 1 Reception (and ATM Cash Machine) | 10 Lecture Theatre | 20 Sports Centres, including the Golf Academy & Gym |
| 2 Fitzherbert Brockholes Building | 11 Student Hub | 21 Putting Green |
| 3 Library | 12 Richmonds' Restaurant | 22 Student Golf Academy |
| 4 Estates Office | 13 Accommodation Office | 23 Higher Education Centre |
| 5 Laboratories | 14 Bowland Suite | 24 Staff Houses |
| 6 Hutton Building | 15 Mini Market | 25 Rural Business Centre |
| 7 The Core - Student Advice Centre | 16 Golf Course | 26 Bus Stops |
| 8 Winmarleigh Building (Classrooms) | 17 Astroturf & 3G Sports Pitches | 27 Fledglings Nursery (Children) |
| 9 Administration Building | 18 Changing Rooms | 28 Garden House Café |
| | 19 Turf Technology Unit | |



- 29 The Plant Centre at Plant World
- 30 Ornamental Kitchen Gardens
- 31 Myerscough Gardens & Marquee
- 32 Brock Meadow Countryside Area
- 33 Landscape Construction Unit
- 34 Rural Skills Centre
- 35 Production Glasshouses
- 36 Floristry Unit / Office & Photography Studio
- 37a General Education
- 37b Foundation Learning Centre

- 38 Motorcycle Centre
- 39 Engineering Centre
- 40 Motorsports Unit
- 41 Animal Studies
- 42 Farriery & Forge
- 43 Veterinary Nursing
- 44 Arena Café Bar
- 45 International Equestrian Arena
- 46 Equine Centre & Indoor School
- 47 Outdoor Riding Schools

- 48 Stables
- 49 The National Arboricultural Centre
- 50 Stumble Inn
- 51 Forge Workshop

EMERGENCIES
 Lost Children and Information
 The British Red Cross First Aid Point **+**
 and the Information point **i**
 is located on the map.



Main Venue Attractions



MAIN ARENA **BUNGALOW FIELD**

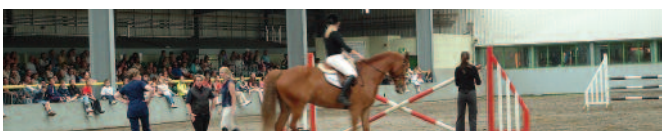
10-10.30am Terry Large Falconry
 10.30-11am Castlemans Gundogs 'ARE' Dogs for Life
 11am-12pm Livestock parade & Dutch Spotted sheep judging
 12-12.30pm Sheep dog demonstration by Stuart Barnes
 12.30-1pm Vale of Lune Harriers
 1-1.15m Thwaites Shire Horses & Dray
 1.15-1.45pm Castlemans Gundogs 'ARE' Dogs for Life
 1.45-2.45pm Livestock parade & Dutch Spotted sheep judging
 2.45-3.15pm Sheep dog demonstration by Stuart Barnes
 3.15-3.45pm Vale of Lune Harriers
 3.45-4.30pm Livestock parade & Dutch Spotted sheep prize giving
 4.30-5pm Terry Large Falconry

THE SHEEP SHOW (BROCK MEADOW NORTH) **BROCK MEADOW**

10.30-11am
 1.30-2pm
 4.30-5pm

THEATRE OF FOOD MARQUEE **BUNGALOW FIELD**

11am Head chef Chris Bury and proprietor Patrick Beaume of The Cartford Inn
 12pm Anthony & John Gornall, proprietors of Honeywell Meats: butchery demo
 1pm Tim Maddams, former River Cottage head chef and food writer
 2pm Anthony & John Gornall, proprietors of Honeywell Meats: butchery demo
 3pm Head chef Chris Bury and proprietor Patrick Beaume of The Cartford Inn
 4pm Tim Maddams, former River Cottage head chef and food writer



LARGE EQUINE ARENA

10.45am Thwaites Shire Horses
 11.00am College Musical Ride
 11.30am Vale of Lune Harriers
 12pm Lancashire Police Dogs
 12.30pm Thoroughbred Retraining Centre Demonstration
 1.00pm College Parade of Horses
 1.45pm Lancashire Police Dogs
 2.15pm Thwaites Shire Horses
 2.30pm Vale of Lune Harriers
 3.00pm Thoroughbred Retraining Centre Demonstration
 3.30pm Student jumping demonstration
 3.45pm College Mounted Games

MEET THE PONIES **SMALL EQUINE ARENA**

11am - 12pm
 2pm - 3.30pm



DRIVING & MOTOR ZONE

10am Intro/Buggy/ATV/Electric/Hybrid
 10.30am Pit Stop Challenge
 11am 3 Sixty Bicycle Display
 11.25am Motorsports Parade
 11.45am Stunt/Film Show
 12pm Autotesting Display
 12.15pm Drifting demo/info
 12.30pm 3 Sixty Bicycle Display
 12.55pm Buggy/ATV/Electric/Hybrid
 1.30pm Pit Stop Challenge
 2pm 3 Sixty Bicycle Display
 2.25pm Auto Solo Display
 3pm Stunt/Film Show
 3.15pm Autotesting Display
 3.30pm 3 Sixty Bicycle Display
 3.55pm Buggy/ATV/Electric/Hybrid
 4.30pm Westfield Kit Car Parade
 4.50pm Motorsports Parade
 5pm Thank You & Good Night

Demonstrations are weather permitting and timings/events may be altered to suit the weather conditions.



SPORTS

HIGH PERFORMANCE CENTRE SPORTS HALL

10am-12pm Netball Match - Myerscough v Wyre Borough
 1-4.00pm Basketball Match
 Myerscough v Lancashire Spinners

3G PITCH

10am-12pm Lancashire Football Association Trials
 1-3pm Football Match - Myerscough v Fulwood Academy
 3-5pm Rugby match - Myerscough v Old Boys

ASTROTURF

All day "Have a go" cricket skills and testing

Myerscough College welcomes visitors to its Open Day but accepts no liability for damage to or loss of personal possessions or property, however caused, or for any consequential loss and shall have no liability to visitors other than in respect of statutory legal obligations resulting from negligence. Visitors should take care for their own safety and ensure children are supervised at all times.



Myerscough Catering Services

OPEN ALL DAY...

Brock Meadow (32)

- Bowland Meats hog roast
- Cumberland and Westmorland
- Sausage Company
- Furness Fish
- Coffee Bug
- Ice cream

Rural Skills Centre (33)

- Vending machines

Garden House Café (28)

- A selection of sandwiches, cakes, hot and cold drinks and confectionary

Myerscough Gardens Marquee (31)

- A selection of sandwiches, cakes, hot and cold drinks and confectionary

Myerscough Gardens (31)

- Ice cream

Catering Village Marquee (below 41)

- Hot roast beef sandwiches, beef sausage barmes, beef and lamb burgers, sandwiches, vegetarian options, hot and cold drinks and confectionary

Equine Arena Café Bar (44)

- Full café service, hot and cold drinks

Stumble Inn (50)

- Licensed bar (11.00am-5.00pm)
- Ice cream

Sports Centre (20)

- Vending machines

Organising a party? Looking for a room?

Myerscough College's Stumble Inn is the ideal venue.

- Wedding Receptions
- Birthday Parties
- Christenings
- Corporate Events



A large and stylish environment that can accommodate your every need.

Contact Robert Kay Tel: 01995 642302 or 07947769041
E-mail: rkay@myerscough.ac.uk

FREE ROOM HIRE
WHEN THE BAR IS USED.

At Myerscough Sports Centre we actively try and encourage good physical health by making it as affordable as possible to access our wide variety of fitness and exercise opportunities. Check out our range of memberships:

Gym Lite

£16.99pm

Off peak times only – Mon-Fri 7am-3pm
Sat-Sun 12noon-3pm | Class Discount
Standing Order | No minimum period
Free Induction | Workout programme

Gym Full

£22.99pm

Unlimited Gym Access
Class Discount
Standing Order | No minimum period
Free Induction | Workout programme

Gym Gold

£27.99pm

Unlimited Gym Access
Unlimited Class Access
Standing Order | No minimum period
Free Induction | Workout programme

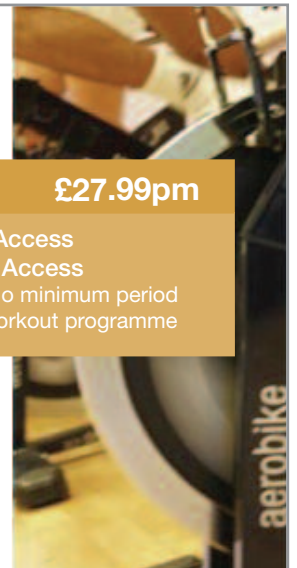
Wide Range of Classes

Spin • Ab Blast • Body Attack • Flow Pilates • Circuits

**Join today and get
a whole month free!**

01995 642 200 | www.myerscough.ac.uk | sportscentre@myerscough.ac.uk

MyGym | MyHealth | MySport | MyLifestyle | MyGym | MyHealth



Dogs - are allowed on campus on non-retractable leads. There is restricted access to certain areas. Guide Dogs are allowed in most areas. Please do not leave your dog in the car.

Myerscough College is fully protected by

Thompson
Group Services

Part of the
Thompson
Group

Commitment to
Delivering
Excellence

**Don't take risks
with your
home alarm
monitoring.**

**Professional
monitoring of
your home for
as little as
75p per day***



A professional Alarm Receiving Centre will monitor the status of your home burglar alarm 24 hours a day; every day of the year. In the event of an activation they will call your list of key holders and notify them of the alarm activation (a Police response option is available).

Contact us for a free no obligation survey and quote

*Price covers key holder notification on an existing alarm system.

Monitoring can be linked to any type of existing intruder alarm and works on all mobile phone networks (free survey to assess reliability of coverage).

Thompson Group Services
2 Osprey Place
Titan Way
Leyland
PR26 7EW

Tel: 01772 641226
Fax: 01772 641227
info@thompsongroupservices.com
www.thompsongroupservices.com

Corrys Limited



Sound and Communication Systems

Country Shows Festivals Motor Sports Equestrian Events

Quality Sound Systems for audiences from 100 to 10,000

Outdoor or Indoor

01253 811111

THE
CARTFORD
INN



Multi award-winning gastropub and boutique hotel at the heart of Lancashire's Fylde countryside.
Celebrating 10 wonderful years...

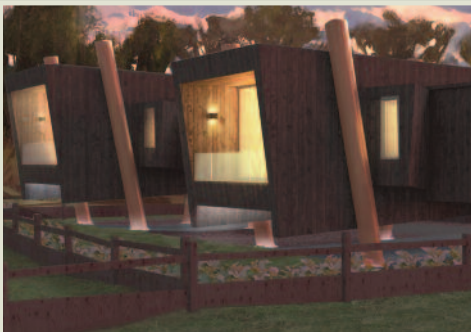
Opening in June. Two new luxury studio lodges.

- Balcony with river view
- Spacious lounge
- Split level bedroom area
- Quirky interior design
- Bath tub at the end of the bed
- Separate bathroom with walk-in shower
- 4K smart TV, sound system & WI-FI
- Unique and exclusive special features

Project supported by LEADER



The European Agricultural Fund for Rural Development
Europe investing in rural areas



www.thecartfordinn.co.uk

(01995) 670166 Cartford Lane, Little Eccleston, PR3 0YP





THINKING ABOUT UNIVERSITY?



The University of Central Lancashire (UCLan) is proud to work in partnership with Myerscough College. The partnership reflects a strong and shared commitment to enhancing the quality of the educational offer to students. Myerscough College is one of the leading specialist institutions in the UK for land-based studies and industry-specific sports coaching degrees and you'll find a wide range of university level courses on offer at the College.

To find out more about UCLan and the full range of courses we offer come to one of our Open Days. You can find out why the University of Central Lancashire (UCLan) has risen eight places in the most recent Times Higher Education Student Experience Survey.

UCLan is also ranked in the top 3.7% of universities globally by the Centre for World University Rankings 2016 (CWUR), and has been named in The Guardian University Guide for 2018 as one of the UK's most improved universities.

Visit us at a 2017 Open Day and you'll get advice on everything about going to university - from what course to study to whether you'll manage financially.

FRIDAY 23 JUNE
SATURDAY 24 JUNE

Register at uclan.ac.uk/opendays



Myfuture



Daily transport from across Lancashire

If you're leaving school or college this year, take a look at the **full-time courses, degrees and work-based apprenticeships** available at Myerscough - with a range of options across 20 subjects, including:

- Agriculture ■ Countryside Studies ■ Animal and Horse Care
- Gamekeeping ■ Fish Management ■ Sport ■ Tree Surgery
- Motorbike Maintenance ■ Landscaping ■ Agricultural Machinery

APPLY NOW

Places still available for courses starting in September.

Daily college bus services from Preston, Blackpool, Lytham, Lancaster, Blackburn, Burnley and the Ribble Valley.

Choose myerscough

- New £5 million Food and Farming Innovation Technology Centre
- National Centre of Sporting Excellence
- £30 million campus building programme
- 95%+ student satisfaction with teaching/support
- Superb career and employment opportunities



Myerscough College

www.myerscough.ac.uk

0800 652 5592



MyerscoughColl



@myerscoughcoll

Myerscough College, Bilsborrow, Preston, Lancashire. PR3 0RY