

My Degree. My Future. My Success. My Career.

My Myerscough

UNIVERSITY DEGREE COURSES IN PRESTON, LANCASHIRE

**100%**  
of students agree  
"teaching staff are  
enthusiastic and  
knowledgeable"

# Visit Myerscough

## Course Advice Mornings

To supplement our Summer Open Day we run a series of University Degree Course Advice Mornings throughout the year. If you want to get a feel for the campus, come and have a look around! You'll see what a great place Myerscough is, with so many facilities for your education, social life and future career!

Staff and tutors representing each subject area will be present to chat about the various courses on offer, future career opportunities and the range of support available to students. Advice Mornings are held on Saturdays at our Preston Campus and they're scheduled for the following dates:

**Saturday 8th October 2016**

**Saturday 12th November 2016**

**Saturday 10th December 2016**

**Saturday 25th February 2017**

**Saturday 22nd April 2017**

**Saturday 24th June 2017**

**Saturday 9th September 2017**

**Saturday 7th October 2017\***

**Saturday 11th November 2017\***

**Saturday 9th December 2017\***

Individual teaching departments also organise Applicant Days for prospective students, during the UCAS applications cycle, to enable you to spend a 'day in the life' of a Myerscough student in your chosen subject area, before making your final decision about where to study. You'll meet course tutors, fellow applicants and current students, whilst learning more about the course content, practical activities, academic research, work experience opportunities and future careers.

\*Subject to confirmation

## Summer Open Day

Come along and experience the superb facilities and excellent campus life at Myerscough College on our popular Summer Open Day and Country Fair.

**Sunday 11th June 2017**

**Sunday 10th June 2018\***

It's an ideal chance to browse the campus and learn more about your chosen subject (and the courses available) before you complete your UCAS application.

There are more than 200 attractions, exhibits and displays, giving you the opportunity to view practical activities, chat with course tutors and current students, tour the campus, view our accommodation, and find out more about the College's research programme and the range of exciting careers available to Myerscough graduates.

Staff and students from each department will be showcasing their work, undertaking practical activities and demonstrating the resources and equipment available to students.

Come and join us. It's an excellent family day out.

For more information, and to reserve your place, give us a call or book online:

[www.myerscough.ac.uk/HEOpenDay](http://www.myerscough.ac.uk/HEOpenDay)

## Latest News and Information

For all the latest news, student success stories and developments at Myerscough College keep in touch with us.

 The main College Facebook page is titled **myerscoughcoll**

 The main College Twitter feed is **@MyerscoughColl**

We then have additional subject feeds according to your area of interest. These are highlighted on the individual subject pages in this prospectus.

[@My\\_Animals](#) [@My\\_Equine](#) [@My\\_Motors](#) [@My\\_Sport](#) [@My\\_GreenSpace](#)

# My ambition



"Myerscough has a fun and friendly atmosphere that is second to none. The knowledge of the staff and the quality of the facilities are amazing and really made my time there memorable."  
**Dillon Sandiford**  
FdA  
Football Coaching



"I enjoyed the fantastic learning environment at Myerscough College and debating the issues relevant to my course with the enthusiastic and passionate teaching staff and students."  
**Gregory McManamon**  
BSc (Hons)  
Rural Resource Management



"I loved my time at Myerscough. The friendships I made, the confidence it helped me gain and the skills that have set me up for employment will live with me forever."  
**Emily Cawley**  
BSc (Hons)  
Animal Welfare and Behaviour



"I spent three years studying with some of the best people at Myerscough. The research and practical skills that I have learnt will be invaluable to me as I progress on to a Research Masters and into the industry."  
**Rachel Lawson**  
BA (Hons)  
Equine Management

## Getting to know us

Myerscough at a glance	4-5
University of Central Lancashire (UCLan) partnership	6-7
Learning resources	8-9
Student life	10-11
Accommodation	12
Sporting life	13
Student welfare	14
Research	15
Overseas study	16
Degree choices	17
Applications	18
Entry requirements	19
Fees and finance	20-21
International students	22-23
Part time opportunities	24
Directions	25
Myerscough Ventures	100
Campus map	101

## Subjects

Agriculture	26
Countryside and the Environment	32
Animal Studies	36
Veterinary Nursing	40
Arboriculture and Urban Forestry	44
Equine Studies	48
Farriery	54
Horticulture	58
Floristry and Floral Design	62
Sports Coaching, Sports Science, Health and Personal Training	66
Cricket Coaching	70
Football Coaching	72
Golf Studies	76
Basketball Coaching	82
Rugby Coaching	84
Agricultural Machinery Engineering	86
Motorsports	90
Photography	94
Sportsturf	96
Notes	102
Course Index	103

# My Myerscough

We'll help you make two very big decisions. What to study and where to study it.

No doubt you're looking for an institution that's got the perfect mix of stimulating courses, a great location, a glowing reputation for teaching and graduate success and, of course, a happening social scene. But where can you find it all in one place?

**98% student satisfaction with welcome received during Fresher's Week**



# My campus



## Brilliant campus, superb facilities and a great location!

The campus at Myerscough's main centre in Preston is quite simply amazing. Set in 600 hectares of open, green surroundings, Myerscough College offers all the facilities you could need for a great time – a great social life, state-of-the-art sports academies and comfortable, easy-going accommodation.

We've recently invested upwards of £20 million on campus developments, providing new sports and changing facilities, new dining facilities, an extension to our Higher Education teaching centre and dedicated Veterinary Nursing, Animal Studies, Rural Skills and Engineering centres. What's more, you're in easy reach of all the shopping and nightlife that nearby Preston, Lancaster and Blackpool have to offer. If it's fresh air you're after, the surrounding countryside (plus the Lake District, just up the M6) offers unlimited mountain-biking and outdoor sports opportunities.

## You'll find all you're looking for at Myerscough College

Myerscough offers university level courses, including Foundation Degrees and Honours Degrees, in a surprisingly diverse range of subject areas. Whilst we are a leading college for land-based courses, such as Agriculture and Horticulture, you can also study for a Degree in Veterinary Nursing, Equine Science, Golf Coaching and even Motorsports, to name just a few. In fact, most of the courses at Myerscough are in subjects that you may already enjoy in your leisure time. What better way to further your education than to spend your time studying a subject you love and knowing that it will lead you into a relevant and exciting career too.

## The chance to travel

Another good reason for studying at Myerscough is the opportunity to work and study abroad. We have close links with several American universities, allowing a number of our students to undertake study abroad. What's more, many of our courses provide the opportunity to work abroad on placements after you've graduated – so if you like travel, here's a great place to start your journey!

## Excellent facilities and a fantastic new way of learning

Because the Foundation Degrees at Myerscough College are designed to prepare you for the world of work, a proportion of

your time will be spent acquiring practical management-level skills – either outside in the open air, in purpose-built workshops or in environments which reflect the workplace. This means your learning experience is made more enjoyable, enriching and fun! We also have exceptional learning facilities, including an extensive library and fully resourced computer centres for all your study and IT needs.

## Higher Education Partners

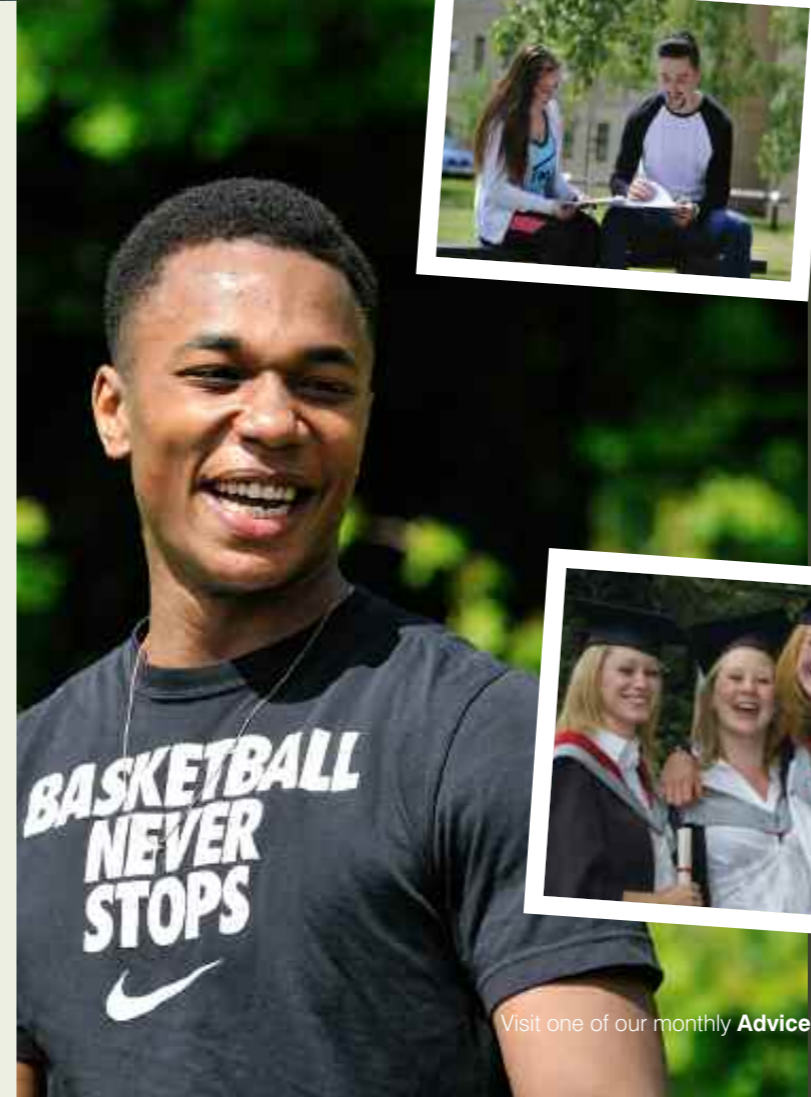
The College collaborates with university partners in the provision of Foundation, Honours and Masters Degrees. The College's major awarding partner is the University of Central Lancashire. The logo of the university partner, and the awarding institution for the course, is shown on each subject page.

## Postgraduate Research

Myerscough offers postgraduate opportunities in the research areas listed on page 15. The following research degrees are available:

MSc by Research, MPhil or MPhil to PhD. External funding may be available from funding bodies or industry sponsors. Alternatively, students may choose to self-fund their research.

If you have a research idea and want to discuss the possibility of turning it into a postgraduate qualification contact Dr David Elphinstone on 01995 642309 or email [delphinstone@myerscough.ac.uk](mailto:delphinstone@myerscough.ac.uk)



## Where we are

Myerscough College's Main centre is in a great location, within easy access of many major towns and cities.

Preston	6 miles
Blackpool	15 miles
Lake District	45 miles
Manchester	40 miles
Liverpool	45 miles





# My university

**Myerscough College is proud to work in partnership with the University of Central Lancashire (UCLan).**



Myerscough College is an Associate School of the University of Central Lancashire, in recognition of the strong and longstanding relationship between the two partners.

The partnership reflects a strong and shared commitment to enhancing the quality of the educational offer to students and adds value to the student experience.

Both UCLan and Myerscough have complementary strengths in niche-area research such as sustainable energy, bio-science and agriculture.



## The University of Central Lancashire

Myerscough College is an Associate School of the University of Central Lancashire (UCLan), a dynamic, vibrant and contemporary university located in Preston city centre. UCLan is one of the largest universities in the UK with around 35,000 students, 11 world-leading and 17 internationally excellent research areas. It offers a wide range of undergraduate and postgraduate courses.

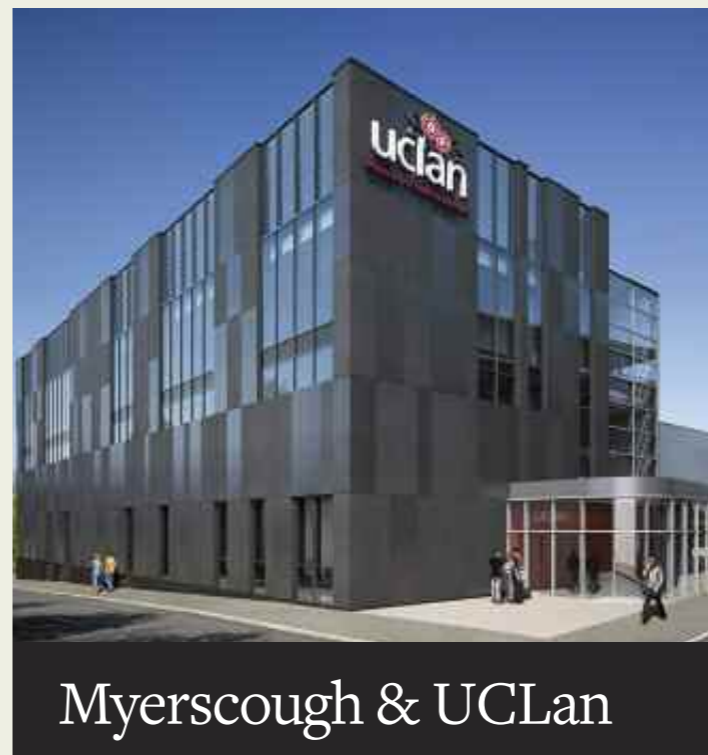
In recent years UCLan has invested more than £120 million into new buildings, facilities and resources to support teaching, learning and leisure activities at the University. This includes the Sir Tom Finney Sports Centre, a dedicated laboratory complex, a state-of-the-art Media Factory offering cutting edge facilities, an award-winning Students' Union, world-class sports facilities, a School of Dentistry and the UCLan Dental Clinic that offers first-rate dental services at the Preston Campus.

In addition, you could also benefit from a huge investment plan which will transform the Preston campus over the next ten years. The £200 million Master Plan will create a unified, welcoming and world-class campus compatible with the University of Central Lancashire's status as one of the UK's largest universities. The first stage of the development will see the construction of the £30 million-plus Engineering Innovation Centre, along with the creation of an iconic gateway to the University. At the heart will be the construction of a new public 'Adelphi Square', drawing together the University and the City.

The large population of UCLan students has turned the city of Preston into an energetic metropolis with a buzzing nightlife and a growing arts scene, surrounded by pubs, clubs and eateries that provide worldwide cuisine to cater for every palate.

There's a range of entertainment venues, including the Guild Hall and Charter Theatre, providing year-round entertainment, such as major sporting events, ballet, drama, concerts and much, much more. Preston also has plenty of museums and cultural attractions, as well as being a great place to shop with several shopping centres and retail outlets housing many of the big name shops.

So as a student of nearby Myerscough, you will not be far from all the action in Preston.



## Myerscough & UCLan

**As Myerscough higher education students are enrolled at both the College and the University, you are able to access a wide range of the facilities and services at UCLan's campus in Preston. College based courses therefore have the same entry requirements, regulations and awards.**

### Student Benefits

- Access to and membership of the UCLan Library, including the Virtual Academic Library of the North West (VALNOW) and the Skills and Learning Resources System. Students can search the University library's catalogue of around 500,000 items and access a range of online databases, journals and e-books.



- Access to a range of Student Services, including the Student <i>centre (providing information and help on all aspects of student life) and Student 'futures' which offers advice and guidance on employability, enterprise and career planning.
- Full membership of the Students' Union, with its state-of-the-art £6.5 million building in Preston. This features retail and catering outlets, a printshop, The Bridge student employment agency, more than 60 clubs and societies and its very own radio station and magazine. For more information on these services visit [www.uclansu.co.uk](http://www.uclansu.co.uk)
- Excellent sporting opportunities, with 5-star facilities at the £17 million elite indoor sports centre, Sir Tom Finney Sports Centre and the outdoor UCLan Sports Arena and more than 40 clubs affiliated to the Students' Union and British Universities and Colleges Sport (BUCS). Additional local facilities are hired to provide canoeing, climbing, squash, swimming, trampolining and windsurfing.
- All Myerscough students receive a UCLan Card once they've enrolled at College. This provides access to the University's online services, library services and sports facilities. Make sure you make the most of your UCLan Card and exciting offers, exclusively for card holders.



Naturally, you'll spend a fair amount of your time at Myerscough College studying so we've made it as enjoyable and productive as possible, by providing a range of dedicated Higher Education study facilities, IT access points and user-friendly learning resources to help you get the most from your chosen degree course!



**How can I describe Myerscough in so few words?**

“It's the beautiful campus, the superb teaching and the helpfulness of staff. It's the facilities, the links with employers, the support and guidance, the great career prospects and all the friends I've made along the way.”



# My learning resources

# My study facilities

## An excellent library

The user-friendly College library is housed on the ground floor of the modern Learning Resource Centre. The library at Myerscough delivers a dynamic information service through a stock of around 45,000 books and journals along with a comprehensive range of electronic media. A number of local and national newspapers are also available. The College library is known to be one of the best specialist libraries in the country. Library staff are always available to provide expert advice and guidance.

Open seven days a week during term time, and weekdays during vacations, the library has a number of silent study rooms and 100 study places arranged to provide a comfortable and relaxed atmosphere. 40 networked PCs are available for student use along with a series of laptops that can be loaned out to help during assignments and presentations. Printing and photocopying facilities are also available.

Students also have access to VALNOW, the Virtual Academic Library of the North West – part of the UCLan network. This enables you to search around 500,000 items from the University library – from books and photocopies of journal articles to numerous on-line services – many of which can be delivered to Myerscough for study use. The Library also has its own pages on the College website which provides remote access to many of our library services.



## Frank Peregrine Higher Education Centre

Our £2.6 million Higher Education study centre, named after a former Principal of the College, provides a dedicated facility for all degree students. The centre has wireless internet access and includes numerous teaching rooms, an IT suite, a quiet study area, café, staff offices and interview and tutorial rooms.

The new building is exclusive to degree students at Myerscough and also houses the College's Research Office, which is a focal point for staff and students active in research. The IT suite offers access to equipment on an individual 'drop-in' basis while the teaching and interview rooms provide a quality learning environment for students.

## Computer centre

The College's computer centre is housed on the first floor of the main Fitzherbert Brockholes building. Networked PCs, software and associated printing facilities are continuously updated and enhanced to provide the best service possible. There is access to a range of word processing, spreadsheet, database and graphics packages (on Microsoft Office Professional) along with specialist software related to your chosen subject. Every student has their own College email address, network file space and Office 365 provision – including free Office applications for the duration of their course – along with fast and reliable internet access.

IT training is provided for all students at College, with a range of supplementary self-study handbooks available to further improve your skills. A wireless network provides internet access for laptop, tablet and smartphone users across the campus.

## Superb laboratories

The College laboratories provide an essential and dynamic service at the centre of the College. They are used to support scientific teaching and learning as well as research in the land-based industries. This ranges from agriculture and horticulture to animal care and veterinary nursing. We are also an official Met. Office Weather Station. A team of friendly, well qualified and experienced technicians and assistants support all teaching and research activities and are always happy to help and advise students who use the facilities.



### The laboratory complex includes:

- Two analytical areas – containing special equipment, soil sampling facilities and areas for student project work
- Two dedicated research labs – used mainly by Degree and PhD students
- Two veterinary nursing labs
- One post mortem room
- Six general purpose/project labs
- Plant science analysis room
- One Micropropagation facility – used for research
- Milling facility for animal feed nutrient analysis
- Video editing suite

Myerscough College isn't just about studying – it's about enjoying yourself and having fun! OK, so going to College is about working hard and passing your exams, but on the way you definitely deserve a little rest and relaxation – and Myerscough College has got it all!

We've a great choice of social activities taking place throughout the year on-campus and off-campus. These provide fantastic opportunities to try something new and make friends with other like-minded students.



## My social life

### Chill out on campus!

If you want to relax after your College work, then you'll find all sorts to interest you on campus. There are lots of places for you to meet up with friends in an easy-going sociable atmosphere. There are also hundreds of different organised activities, parties and theme nights, as well as our legendary highlights – the Myerscough Christmas and Summer Balls.

You can get involved in all these events, since the Student Union organises most of them – they're always looking for good ideas, and for people to help out... especially during RAG week! In fact, if you fancy getting involved with any of the social and sports activities at the College, just put yourself forward for election to one of the student committees that arranges the events. There's also a full range of enrichment activities organised by teaching departments within College – from course-related visits and guest speakers to charity fundraising events.

The Stumble Inn is one of the main social centres at the Preston campus and is the perfect venue for many of the activities on campus. With a main room for discos, parties and bands, it also has a separate annex that is equipped with pool tables, a number of arcade video games, juke box and big screen TV facilities. The Student Common Room and Snooker Club provides additional areas for relaxation.

We've also got some of the best sports facilities in the whole of the North West (see page 13), so you'll always find something exciting to do without having to travel far! Whether its social sport amongst friends or playing for one of the College teams there's plenty to keep you fit and healthy!



150+ Clubs and Societies at UCLan



### A word from the Myerscough Student Union

"Myerscough is a great place to study. As well as having excellent teaching facilities and great staff, Myerscough students also benefit from a lively and interesting social scene. All social events and facilities are run by the MSU (Myerscough Student Union). The MSU's aim is to entertain and amuse all students no matter what their interests may be. Event nights such as discos, battle of the bands, hypnotists, comedians, pool competitions and pub quizzes take place each week in the Stumble Inn, the MSU's student centre. Social nights are also run by the College's wardening staff each week. These include nights out to places like Blackpool, Lancaster, Chillfactor®, the Trafford Centre as well as paint balling, gokarting and bowling. So whatever you're into you're sure to find something that you'll enjoy.

*Take Jones*

## My entertainment

### Join in the fun

Myerscough hosts an array of teams and clubs for you to join. From street dance and Scouting to fishing, badminton, cheerleading, rock climbing, archery and numerous sports teams, there is something for everyone!

And don't forget that you've also got access to more than 150 clubs and societies at UCLan's Preston campus nearby. You'll have a great opportunity during Freshers Week to join up with these various groups during their freshers social events!

### Choose the best entertainment in the North West!

If you have a taste for city life, then you're ideally situated for enjoying the best in the great-value North West! The university cities of Lancaster and Preston are right on your doorstep, with a great choice of student oriented activities and entertainment. You're also within easy reach of Liverpool and Manchester for great shopping! Blackpool is also close by, offering year-round entertainment; funfairs, shows and everything you could wish for at a great British seaside resort!

In fact, as an Associate School of the University of Central Lancashire, you can use all the facilities in their £6.5 million Students' Union – including the fantastic Source Bar venue. Providing the best in concerts, comedy, sport and club nights, the Students' Union has hosted gigs from numerous bands as well as playing host to some of the largest student nights in Preston. Visit [www.53degrees.net](http://www.53degrees.net) for more information.

You'll find far more information about all the activities at the Students' Union through The Pulse, the student news source and university radio and TV stations, which are available online.

For a slightly slower pace of life the ever-popular 'Owd Nell's Tavern and Guy's Thatched Hamlet is a popular hang-out just down the road from College. The nearby village of Bilsborrow, and traditional market town of Garstang, offers a range of pubs, eateries and shops.



# My accommodation

At Myerscough College, campus life is incredibly active – especially outside working hours – so the best thing about living on site with fellow students is being close to where the action is!

That's why if you live a distance from College it's great fun to experience life in our halls of residence, especially in your first year. It's an easy and effortless way of meeting people, making new friends and staying in touch with what's going on throughout the College.



**£20 million**  
ongoing campus development programme

## Halls of residence

At Myerscough there is exceptional full-board and self-catering accommodation for more than 650 students, in 28 different Halls of Residence. There is a good mix of single and twin rooms with shared common room, kitchen and bathroom facilities, plus a range of self-catering en-suite accommodation. Priority for accommodation is normally given to students living outside a 15 mile radius from College.



If you live in the North West, don't forget that the College provides a direct daily bus service from many towns in Lancashire. (More information is available on page 25). Car parking is available in the student accommodation village.

Myerscough prides itself on being a safe and friendly campus. Resident wardens are always on hand to assist with the wellbeing and safety of students, while CCTV cameras and a night-time security team provide additional reassurance. All our accommodation is non-smoking. The majority of accommodation also has access to either wireless or cabled networked internet access. The cost of this is included in your residential contract\*.

Residential fees for Higher Education students range from £4070 for a single en-suite room on a self catering basis to £6105 for a single en-suite room with full-board catering – both on 37 week contracts\*.

For further information, please check the website and download our 'Living in Halls of Residence' leaflet.

## Privately-owned accommodation

For students choosing to live off-campus, our Residential Services office holds a list of private landlords who offer local accommodation. It should be noted that this accommodation is not vetted by the College.

## Eat your heart out!

There's a wide choice of cafés and restaurants on site, including the main Richmond's Restaurant and dining room, the adjacent Pantry, the Garden Café at Plant World and the Equine Café in the International Arena. If you need to do any shopping, there's a well-stocked mini market for snacks, fresh, chilled and frozen food as well as stationery, toiletries, confectionery and drinks. Vending machines, a cash machine and laundry facilities are all available on site.

\* All costs relate to the 2016/17 academic year and are subject to change each year.



Richmond's Restaurant



If sport is your way of relaxing after a hard day's study, we've got a great range of facilities for you.

Myerscough's sports facilities include grass football and rugby pitches, a multi-use 3G pitch, a new High Performance Sports Centre and a separate four-court indoor sports hall with facilities for basketball, five-a-side football, volleyball, tennis, cricket practice and badminton.



# My sporting life



**FREE gym membership during your first year**

## Join the club

All student sports activities are organised by the College Sport Maker and Sports Activator. We have a wide range of activities and clubs for students to participate in. The choice varies from year to year depending on students' interest. Currently there is football, rugby, rock climbing, disc golf, netball, horse riding and many more! Additional facilities are available at the University of Central Lancashire, with more than 30 student sports clubs and impressive facilities at the Sir Tom Finney Sports Centre and £12.2 million UCLan Sports Arena.



The Gymnasium is a fully equipped state-of-the-art facility which includes a wide range of cardiovascular and resistance machines and free weights. There is a separate dedicated strength and conditioning suite (pictured above). The Golf Studios have two Golf Simulators which include golf courses from around the world, an outdoor practice range and a purpose built indoor chipping green. The College also boasts a 9-hole golf course and driving range.

Both the Gymnasium and the Golf Course operate on a membership basis. All full-time degree students are entitled to free gym membership for their first year. Student golf course membership is currently £49 per year. Various fitness classes are organised throughout the year in our dedicated fitness and aerobics studio. These include karate, tae-kwon-do, spinning, Zumba, Pilates, Dru Yoga, keep fit and circuit training. Many of these are free for students with gym membership.



# My welfare & support

Here at Myerscough we have an excellent range of support and welfare services to meet your needs. Our advice and guidance team is dedicated to helping you succeed on your chosen degree.

Student life is a lot more than studying and exams! As well as discovering new friends and new experiences, it's a transition period that takes you into a new phase of your life. So, if you find you need any information, advice and guidance along the way, just come and talk to us! We've got a range of support services designed to make sure that everyone gets the most out of College life.

The Core – Student Advice Centre at the Preston campus



## Counselling

Perhaps you're away from home and not in a position to talk to family and friends? You can still discuss any problems with our professional, trained counsellors. Whether it's personal, social or academic, you can talk in confidence to an experienced, caring person who won't judge you, but will listen – and can help you deal with your issues.

## Health care

A local medical practice holds daily surgeries at the College. If you are moving to Myerscough from outside the area, we strongly advise you to register with the local general practitioner. Dental practices are also available locally. Our College Nurse can provide advice on first aid, preventative medicine, health education and healthy living.

## Chaplain

Our resident Chaplain is another source of help if you have problems or if you simply need to talk in confidence to someone who'll listen carefully to what's on your mind. It doesn't matter what your religious faith is (or even if you have a faith) the Chaplain is here for everyone.

## Careers guidance

Your time at Myerscough College is a stepping stone to your future career. If you need some advice and guidance in deciding exactly what you want to do after College, have a word with your personal tutor. You will also find a lot of information in the careers section of our library and in the dedicated Learn2Work careers section in The Core. Further help is available from our careers advisor and support team in The Core.

## Childcare

Fledglings is our on-campus nursery for children aged between three months and five years. It provides excellent facilities and is run by experienced, qualified childcare professionals. Information about Childcare Grant (to help with Childcare costs) and Parents' Learning Allowance (to help towards course costs – like books, materials and travel) is available in the 'Student Finance' section of the gov.uk website.

## Disabilities and Learning Support

Our Inclusive Learning team provides a flexible response to students with disabilities or specific learning difficulties (such as dyslexia or dyspraxia.) For students in receipt of a Disabled Students' Allowance (DSA) the College can organise a range of support. This can include:

- Assistive Technology
- British Sign Language (BSL) communicators
- Study skills support
- Resources and equipment
- Exam concessions
- Note-takers and scribes
- Inclusive Learning Tutors
- Inclusive Learning Advisors



# My research

Myerscough College is proud of its commitment to original research.

We believe that our teaching and learning, particularly at higher education level, should be underpinned by strong scholarly activities; the pinnacle of which is the College's pioneering research programme.

Myerscough College has more than 30 lecturing staff actively engaged in research projects, often working alongside teams of undergraduate and postgraduate students. Relevant research helps to maintain the College's position at the forefront of the industries it serves, whilst also adding value and diversity to our curriculum content and styles of teaching.

## The College's research specialisms are:

- Sports Performance
- Animal Welfare and Equine Performance
- Sustainable Agriculture and Arboriculture
- Teaching and Learning

Research projects are currently funded by the College, with external funding from government departments, private companies and individuals when available. The College is gaining a good reputation in industrial, governmental and academic circles for the research work it undertakes. We host a popular annual research conference (open to students) to highlight our work. Much of this work is undertaken in collaboration with other Higher Education Institutions including the University of Central Lancashire, Lancaster University, The University of Manchester, Anglia Ruskin University and The University of Liverpool.

## Sports Performance

Research in sports performance includes projects that assessed the sources of motivation amongst adolescent elite golfers and the use of imagery routines for rugby, golf and football. This motivational research also expands into the area of equine sports and the early influences experienced by young participants in The Pony Club. There are new projects utilising GPS tracking to quantify the physical demands of youth football and, secondly, to analyse the effectiveness of training methodologies in preparing players for the rigour of match play.

## Animal Welfare and Equine Performance

The College and its partners are leaders in the field of equine biomechanics research. Horse motion and movement can be significantly affected by the venue surface. Using expertise gained across a range of disciplines (including sportsturf and ecology), the team uses 3D digitisation-techniques and a biomechanical horse limb to assess the effects of changing surface conditions on equine movement. This team is assessing the surfaces used at several prestigious international equestrian events. Students from a range of disciplines have the opportunity to be involved in this exciting research. Further studies are investigating the factors which affect animal behaviour and equine performance in competition. Does success stem from the motivation of the horse-rider or motivation of the horse; and how can we influence this? What influence does the external environment have directly prior to competition?

## Sustainable Agriculture and Arboriculture

In the agriculture and horticulture sectors we're addressing sustainable production, following the Government Chief Scientist's clarion call for the need for greater food production from less land, using less energy and consuming less water. This also links to coping with future climate change and the question over whether we can maintain ecologies that will support the earth's biodiversity?





Buckeye Stadium – Ohio State University

**Myerscough College has excellent links with universities, colleges, research institutes and employers across the globe.**

Myerscough students therefore have a great opportunity to travel, experience new cultures and learn new skills – either as part of a formal placement or a more informal work experience opportunity or short-term job after graduation.

## My study abroad



**Golf Management student Alex Hampshire, with Arnold Palmer, at Calusa Pines.**

(home to the US PGA Championship) and Muirfield Village, Dublin, Ohio (venue for the Presidents Cup.) Other students have had prestigious placements at the US Masters at Augusta National, the Ryder Cup at Valhalla, Kentucky, the 5-star Breakers resort in West Palm Beach and the Island Golf School on Hilton Head Island. One of our graduate Golf Management students has also spent a year working at the phenomenal Robert Trent Jones Golf Club and at Calusa Pines in Florida.

Similar programmes exist through our links with Auburn University, Alabama and Clemson University, South Carolina.

Depending upon your chosen subject area, many other overseas work placements are also available. These are advertised on the careers and employment boards within College. For example, agriculture and arboriculture students often travel to Australia and New Zealand on working holidays, while golf students have excellent opportunities to work at PGA European Tour events.

Several degree courses also include European travel as part of the curriculum. Commercial Floral Design students have had the opportunity to visit Dutch growers and flower auctions, while Agriculture and Equine Science students often have overseas study tours.



For many years, a number of Myerscough students have participated in the Ohio State University exchange programme. This provides a 12-month paid work placement at one of a number of prestigious employers across the United States. Students who choose to undertake the programme normally take a year out during, or after, their degree course – similar to a 'gap year' – but with the benefit of supervision, support and guidance from the Ohio staff team. It's a fantastic way to "add value" to your CV.

One of our sportsturf degree students has recently returned from placements at Oak Hill Country Club in Rochester, New York

## My choice of degree



**98%**  
progression from  
Myerscough  
Foundation  
Degrees into  
employment or  
further study

**One of Myerscough College's key strengths is the variety of degree programmes available to prospective students.**

Our Foundation Degrees offer a blend of academic knowledge and practical work-based skills whilst our Honours Degrees are at the forefront of academic research and innovation.



### Foundation Degrees

Foundation Degrees are a relatively new type of degree, in fact the first new Higher Education qualification in the UK for more than 25 years. Launched in 2001, they are incredibly popular. Application rates show an average of around 40,000 students per year enrolling on Foundation Degrees in the UK, during the most recent three years of available data. National surveys reinforce this popularity, highlighting strong levels of student satisfaction with their courses as well as clear evidence of progression to graduate level employment or Honours degree top-ups.

As the Secretary of State for Education and Skills commented in the white paper on The Future of Higher Education, "We will drive forward Foundation Degrees, making them the main work-focused higher education qualification."



Because Foundation Degrees are designed in partnership with employers, the practical knowledge and skills that you learn during the course will be valuable in your career. This in turn makes you much more employable once you've graduated. Your future employers will know that you're not only academically qualified, but that you've also got the practical experience and workplace skills they really want to see. That's why we include the Work Skills Development, Work Project and Business Management and Entrepreneurship modules in many of our Foundation Degree Programmes.

### Honours Degrees

Honours Degrees aim to provide graduates with the ability to investigate, think independently, research and innovate. Graduates will develop a comprehensive knowledge and understanding of their subject, elements of which will be at the forefront of current academic thinking and research.

Employers require graduates who can analyse current practices and processes, evaluate evidence and then use sound judgement to make decisions, often in complex and unpredictable circumstances. We offer Honours Degrees in a number of vocational subjects to enable students to understand both the detailed academic theory and, to a lesser extent than in the Foundation Degree, the practical knowledge of their chosen discipline.

If you have already studied a Foundation Degree or a Higher National Diploma and would like to gain an Honours Degree, many of our subjects offer final year BA/BSc (Hons) progression routes or bespoke one-year top-up options.

# My application

**Making your application couldn't be easier! We'd love to have you as a student here at Myerscough College, so we'll do all we can to encourage you to join us!**

We'll provide you with any advice and information you need about choosing your course – and you can even arrange to come in and talk through your options with us before you apply!



## Applying through UCAS

To apply for your full-time degree course at Myerscough College, you need to apply through the Universities and Colleges Admissions Service (UCAS) website: [www.ucas.com/apply](http://www.ucas.com/apply)

If you have any queries you can contact UCAS on **0371 468 0468** or speak to your tutor or UCAS advisor if you're currently attending college or sixth form. Our UCAS institution code is M99. UCAS applications for 2017 entry can be submitted from September 2016, with a first deadline date of 15th January 2017 for the majority of courses. Applications received after this date, but prior to 30th June 2017, will be considered by us for most courses, subject to places still being available.

## Part-time applications

Applications for part-time and online degree courses, Foundation Certificates and Single Study modules (page 24) should be made directly to the College. Applications can be submitted online, using the links from the individual factsheets on the College website. Printed application forms are available on request, from our Course Enquiries Team.

## The application process

When your application has been received from UCAS the admissions tutor within your chosen subject area will review and assess your application. You might be requested to attend an informal interview. Alternatively you might receive a written 'conditional' offer (usually dependent on your exam results) or an 'unconditional' offer if you already meet the entry requirements. Following a successful application you will be sent an offer letter in the post and also notified of your offer on UCAS Track. We hold a series of Advice Mornings and Applicant Days throughout the year (listed on page two) enabling you and your friends/family to come and look around the campus during the application process.

## Entry requirements

The College aims to be as flexible as possible in its approach to its entry requirements. Our ultimate consideration is your ability to complete your course successfully and develop a keen interest in the subject. Our typical entry requirements are listed opposite.

## Taking a year out? Apply for deferred entry

You might want to take 12 months off before starting College. Maybe you fancy finding a job so that you can gain some valuable practical experience or you might want to go travelling and discover the world around you. If you do, we're happy to consider your application for deferred entry – then you can take time off once you've received your results and met the entry criteria, secure in the knowledge that you've got a place at Myerscough College starting the following September.

## Applications from mature students

If you're thinking of returning to College, but are worried about whether you will fit in, remember that many of our students are over 21 when they join us. Some have decided to return to study after working or raising a family and want to improve their career prospects. Others may have felt that they didn't have the motivation when they were younger. If you do not meet the formal entry requirements, but feel that you have the commitment and aptitude to study at this level, we welcome your application. Please contact the Admissions Team before applying, as we might ask you to complete a pre-entry assignment to ensure that you're comfortable with the content and level of the course.

# My entry requirements

**Once you've decided to apply to Myerscough you'll need to check that you meet the entry requirements for your chosen course (or will have done by the time your course starts!).**

Higher education degree course applicants will normally have completed two years of 'post 16' study and be aged at least 18 at the start of their course.

## English, Welsh and N. Ireland students

### Foundation Degree

A minimum of 48 UCAS Tariff points\*† achieved by:

- two or more A Level passes with at least one at grade C (A2 level award or a single award Advanced VCE)
- or BTEC/City & Guilds Level 3 Extended Diploma at PPP
- or BTEC/City & Guilds Level 3 Diploma at MP
- or NVQ Level 3 in a relevant discipline

### BA/BSc (Hons)

A minimum of 104 UCAS Tariff points\* achieved by:

- three or more A Level passes at C or above (A2 level subjects or a double award Advanced VCE)
- or BTEC/City & Guilds Level 3 Extended Diploma at DMM
- or BTEC/City & Guilds Level 3 Diploma at D\*D

## Scottish students

### Foundation Degree

A minimum of 48 UCAS Tariff points\*† from at least two Scottish Highers at C or above, or Advanced Highers.

### BA/BSc (Hons)

A minimum of 104 UCAS Tariff points\* from a least four Scottish Highers at C or above, or Advanced Highers.

## Republic of Ireland (ROI) students

### Foundation Degree

A minimum of 48 UCAS Tariff points\*† achieved from at least three Higher Level qualifications at C or above in the Leaving Certificate.

### BA/BSc (Hons)

A minimum of 104 UCAS Tariff points\* achieved from at least four Higher Level qualifications in the Leaving Certificate.

## Supplementary Information

Please note that certain degree courses have specific subject requirements. This information will be shown on either the course fact sheet or the relevant prospectus page. For example, Veterinary Nursing students are required to have an A Level (or equivalent) in Biology – in line with the requirements of the Royal College of Veterinary Surgeons. Transferable/Key Skills, AS levels, Scottish Intermediate 2s and Irish Leaving Certificate Ordinary level qualifications may be used to contribute to entry requirements but they are not sufficient for entry on their own.

The College actively encourages applications from people with alternative equivalent qualifications. Please contact the Admissions Office for more information.

International Baccalaureate Diploma qualifications are accepted in fulfilment of the general entry requirements. An overall pass with a minimum score of 24 points is required.

† 56 UCAS tariff points for FdSc Veterinary Nursing.

\* The UCAS Tariff point tables can be found by a search on the UCAS website at [www.ucas.com](http://www.ucas.com).

The tables indicate the tariff points value of a range of popular qualifications. Please be aware that acceptance of certain qualifications is entirely at the discretion of the College, depending upon its suitability and relevance to the proposed course of study. As an indication, the following extract shows the UCAS Tariff points attributed to A Level and Level 3 Extended Diploma qualifications.

A Level	UCAS Tariff Point Value	BTEC/C&G Level 3 Extended Diploma	UCAS Tariff Point Value
A*	56	D*D*D* (D* in C&G Land-based subjects)	168
A	48	D*D*D	160
B	40	D*DD	152
C	32	DDD (D in C&G Land-based subjects)	144
D	24	DDM	128
E	16	DMM	112
		MMM (M in C&G Land-based subjects)	96
		MMP	80
		MPP	64
		PPP (P in C&G Land-based subjects)	48

# My money matters

One of the major areas of concern for all students and prospective students is how they will manage financially whilst attending College or University.

At Myerscough we are very conscious of this and provide support for students as they negotiate their way through the financial maze of student funding.



## “Did you know?”

During the course of their working life, graduates typically earn between £168,000 (male) and £252,000 (female).\*

\*Department For Business, Innovation & Skills – research paper 112, August 2013.

### Tuition Fees

The tuition fees for degree courses starting in September 2017 and September 2018 will be published on the Higher Education finance pages of the College website. As a guideline, the anticipated fees at Myerscough College for all new UK and EU students starting on Higher Education degree courses in 2017 will be as follows:

<b>Foundation Degrees</b>	£9,250 per year
<b>Honours Degrees</b>	£9,250 per year
<b>Part-Time study</b>	£900 per module

(EU students undertaking part-time online courses will be required to pay the International Student module fee.)

New full-time students also receive a welcome package that is likely to include, amongst other benefits, free sports centre membership and gift vouchers for books or related learning materials.

One thing is certain and that's if you are eligible for a tuition fee loan you won't have to pay these fees up front. They can be deferred until after you graduate and are earning more than £21,000 per year. It is anticipated that you will repay 9% of your income above £21,000. So, for example, if your salary is £24,000, you will repay 9% of £3,000 each year. That works out at £270, which breaks down to less than 75p a day.

More information about tuition fee loans, and their repayments, is available on the College website.

### Maintenance Loans

Student loans of up to £8,200 per year – paid in three termly instalments – are available to help with living costs (food, accommodation, travel and course materials for example) whilst studying at College. The amount you can receive is based on

your household income and whether you are living at home or away from home. Similar to the tuition fee loan, these maintenance loan payments can be deferred until after you graduate and are earning £21,000 per year.

Household Income (£)	Maintenance Loan (£)	Household Income (£)	Maintenance Loan (£)
Student living at home		Student living away from home during term time	
25,000 or less	6,904	25,000 or less	8,200
30,000	6,322	30,000	7,612
35,000	5,740	35,000	7,023
40,000	5,158	40,000	6,434
42,620	4,824	42,875	6,095
45,000	4,576	45,000	5,845
50,000	3,994	50,000	5,256
55,000	3,412	55,000	4,667
Over 58,201	3,039	60,000	4,078
		Over 62,180	3,321

### Myerscough College Scholarships

Myerscough applicants who demonstrate experience, and can promote excellence in their subject, may be eligible for financial support from a Myerscough College scholarship.

Five scholarships are available each year in each of these four subject areas (20 scholarships in total):

- Agriculture and Horticulture.
- STEM (Animal and Plant Sciences, Agricultural Engineering or Motorsports Engineering).
- Sport (including Golf, Equine and Motorsports).
- Creative Design (Floral Design and Location Photography).

Successful applicants will receive a £1,000 payment paid in two instalments at Christmas and the end of the first academic year) to support their study at Myerscough.

### Myerscough College Bursaries

We want to ensure that all students have the opportunity to study for a degree qualification, regardless of background or financial circumstances. The College is committed to providing support to students from lower income households.

A limited number of Myerscough College Bursaries (up to £1000) are available, to provide discretionary financial assistance for students to access and remain in Higher Education, particularly those students who need financial help to meet extra costs that cannot be met from other sources of support. Priority groups include students with children, lone parents, mature students with existing financial commitments, students from low income backgrounds and students in unexpected hardship.

### Part-Time Students

Eligible students undertaking part-time study are able to apply for a tuition fee loan as long as their study is more than 25% of the full-time equivalent (ie studying at least 2 modules per year.) Part-time students will not generally be entitled to a loan to cover living costs although they are eligible to apply for the Myerscough College Bursary Fund.

### Other sources of financial help

#### Disabled Students' Allowance (DSA)

This grant provides extra financial help if you have a disability, mental health condition or a specific learning difficulty like dyslexia. It is paid on top of the standard student finance package and is not dependent on income, nor does it have to be repaid.

### Additional Information

If you already have a degree qualification, or started a degree at a different institution and are now looking to retrain or study towards a degree in a different subject, the changes in government funding mean that you might not be eligible for a tuition fee loan or maintenance loan. Please check the College website or contact our Finance Office on 01995 642398 for more information and guidance.

All tuition fees, grant, scholarship and bursary figures relate to proposals for the 2017 academic year. They are subject to change for 2018 and successive years of study.

For more information about student finance for students living in England contact the Student Finance England helpline on **0300 100 0607** or visit either [www.gov.uk/student-finance](http://www.gov.uk/student-finance) or [www.thestudentroom.co.uk/studentfinance](http://www.thestudentroom.co.uk/studentfinance)

For students living outside England:

**Scotland:** [www.saas.gov.uk](http://www.saas.gov.uk)

**Wales:** [www.studentfinancewales.co.uk](http://www.studentfinancewales.co.uk)

**Northern Ireland:** [www.studentfinanceneni.co.uk](http://www.studentfinanceneni.co.uk)

**Isle of Man:** [www.gov.im/education](http://www.gov.im/education)

### Childcare Grant

The Childcare Grant helps full-time students with the cost of childcare during term times and holidays. The amount you receive will be dependent upon your household income and is based on 85% of your actual childcare costs. At the time of going to print, the maximum available is currently £155 per week if you have one child and £266 per week if you have two or more children.

### Parents' Learning Allowance

This can help pay for course-related costs such as books, materials and travel if you have dependent children. The amount you receive will be dependent upon your household income.

The maximum available is currently £1,573 a year.

### Adult Dependents' Grant

Under the current funding guidelines, students with a husband, wife, partner or another adult family member who is financially dependent on them may be eligible for a non-repayable grant of up to £2,757 a year (dependent upon household income).

### Charitable Bequests

You may be able to get financial help from charities or other bodies who have allocated funds to help particular students or courses. A directory of grant making trusts can normally be found in your local library.

### Sponsorship

Some major companies, as well as offering sponsorship to students, also provide employment during vacations and after graduation.

# International students

If you're coming to Myerscough from outside the UK, then we'd like to wish you a particularly warm welcome.

You've chosen an excellent College, with a friendly campus, quality teaching and superb job prospects. We'll do all we can to make your stay here a happy and memorable experience.



Here at Myerscough we have a long tradition of welcoming international students – from Africa, Asia, Australasia, Europe and North America. Above all, we really appreciate the contribution that students from other nations and cultures make to College life. In recent years our online part-time degree courses have also proved particularly popular with international students.

We understand that settling in will be a busy time, with lots of new things to remember, but we'll support you and make it as easy as possible.

A good starting point in planning your application is the British Council website [www.educationuk.org](http://www.educationuk.org). It provides excellent links to a variety of key issues, including the recently revised UK entry and visa requirements. It also provides information about living and studying in the UK. (They have an excellent 'First Steps' information booklet available to download from the website.)

## Overseas Qualifications

To be eligible for one of our courses you must be able to meet the entry requirements listed on page 19, with appropriate exam results and eligible qualifications from your country.

UK NARIC is the national agency responsible for providing information and advice about how qualifications and skills from overseas compared to the UK's national qualification framework. UK NARIC can provide you with a 'statement of comparability' that is designed to assist you when applying for courses in the UK. This statement enables colleges and universities to make informed decisions about the suitability of your qualification(s) for the course for which you are applying.

For more information about UK NARIC please visit [www.naric.org.uk](http://www.naric.org.uk) or call +44 (0)871 330 7033

Alternatively, contact our Course Enquiries Team on +44 (0)800 652 5592 or email [enquiries@myerscough.ac.uk](mailto:enquiries@myerscough.ac.uk) for more information.

## How good is your English?

You must be able to demonstrate proof of your English language skills, by showing that you have 'upper intermediate' level English (a minimum of CEFR level B2 in each of the four components of language learning; reading, writing, listening and speaking) – either by passing the Test of English as a Foreign Language (TOEFL) at 550 (with no less than 4.0 in TWE, TOEFL paper-based) or at 80+ (with no less than 18 in the writing subcore, TOEFL iBT) or by passing the International English Language Testing System (IELTS) at level 6.0 (with no component score lower than 5.5) or IELTS level 7.0 for FdSc/BSc (Hons) Veterinary Nursing.

## How to apply to the College?

All full-time Higher Education applications should be made via the UCAS website: [www.ucas.com/apply](http://www.ucas.com/apply)

If you have any queries please contact UCAS on +44 330 3330 230. Applications for part-time online courses should be made direct to the College. Please contact the Course Enquiries Team for an application form or download one from our website.

## How much does it cost to study?

If you're a full-time student from a European Union (EU) country, you will probably pay the same tuition fee as UK

students. You may also be eligible to apply for a tuition fee loan, although not a maintenance loan to cover living costs and associated expenses.

If you're an overseas student from a country outside the EU, or an EU student undertaking a part-time online course, you must pay an 'International Student' tuition fee. You will also have to pay for accommodation costs and day-to-day living and travel expenses. You will also need to supply evidence to UK Visas and Immigration that you have sufficient funds to support your studies in the UK.

Details of tuition fees for 2017 and 2018 will be published on the College website.

The UKCISA website ([www.ukcisa.org.uk](http://www.ukcisa.org.uk)) provides a lot of additional practical advice about studying and living in the UK.

## International Finance

You will need to fill in a Financial Guarantee Form prior to attending College. This shows that you have the finances available to pay for your tuition fees, accommodation and day-to-day living expenses. Similar evidence will be required by UK Visas and Immigration when assessing visa applications from non-EU students.

## When to pay your fees

You must pay your fees before you start your course. We need to receive your payment before 1st September of each academic year. All Higher Education tuition fees for full-time students should be paid to the University of Central Lancashire. Any other fees should be made payable to Myerscough College.

## Tier 4 Student Visas

Before beginning your studies in the UK, international students from outside the EU will need to apply for a visa to enter the UK. The regulations are subject to change, so it is vital that you check the UK Visas and Immigration part of the at [www.gov.uk](http://www.gov.uk) website on a regular basis.

Myerscough College is a registered Tier 4 sponsor under the Tier 4 points-based immigration system. When you apply for a visa you must be able to pass a points-based assessment and score 40 points before you will be able to travel to the United Kingdom to begin your studies. These 40 points will include:

- 30 points for a CAS reference number (formerly a 'visa letter') from Myerscough College. This shows that we have assessed your application and are willing to offer you a place on the relevant degree course.
- 10 points for being able to prove that you have enough money to cover the first year of your course fees and your living costs in the UK.

A Tier 4 Student Visa application currently costs £322, plus an Immigration Health Surcharge of between £150 and £200.

If full-time study doesn't suit your lifestyle, work commitments or personal circumstances, take a look at our attractive range of part-time courses.

There's a great choice within each of our subject areas – including our increasingly popular web-based online options.



# My directions

## Centrally situated

Myerscough College's Preston campus is centrally situated in the heart of Lancashire, with great public transport links and dedicated College bus services. Wherever you're coming from, there's easy access so you'll have no trouble in finding us!

### Road

The College is just six miles north of Preston (or eight miles south of Lancaster), one mile from the main A6 Preston to Lancaster road – which runs parallel to the M6. What's more, we're only around 10 minutes from either Junction 32 of the M6 (Preston/Blackpool/M55) or Junction 33 (Lancaster South). You'll also be glad to know that there's plenty of free parking space for students on campus. For satellite navigation users our postcode is PR3 0RY, on St Michael's Road, Biltsborrow.

### Rail

Preston is the nearest railway station and is well served by national rail links. Preston is on the main west coast London – Glasgow line, with excellent local connections. For further details, call National Rail Enquiries on 08457 484950 or visit [www.nationalrail.co.uk](http://www.nationalrail.co.uk)

### Bus

Myerscough College provides transport to and from the main campus each day during term time. Currently there are seven bus services to the College, from Fleetwood (via Blackpool and Poulton), Burnley (via Accrington and Blackburn), Clitheroe and the Ribble Valley, Lytham and St Annes (via Warton, Freckleton and Kirkham), Preston bus station and Preston railway station (both via Fulwood, Broughton and Barton, plus a rural service via Inskip, Elswick and Great Eccleston).

Shuttle buses also run during the day to Biltsborrow village, for connections to Stagecoach services from Lancaster, Morecambe and Preston bus station (connecting to the Bolton, Horwich, Chorley and Bamber Bridge 125 service).

### Air and Sea

The major international airports at Manchester and Liverpool are only an hour away – and easily accessible by motorway. Myerscough is within easy reach of Holyhead, Liverpool and Heysham, where regular sea links connect you with Ireland and the Isle of Man.



See page 101 for a detailed campus map.

# My part-time opportunities

## Foundation Certificates

From September, Myerscough College will once again be offering a range of part-time Higher Education Foundation Certificates in the following subject areas:

- Agriculture and Countryside
- Animal Studies
- Equine Studies
- Sports Coaching (Football/Golf)
- Plant Studies
- Creative Design (Floral Design/Photography)
- Agriculture Machinery Engineering

These innovative courses allow students to choose six individual modules of interest to them from a larger portfolio of titles. It is anticipated that the modules will be completed over a period of between 18 months and two years. Some modules will be available for online study and others offered on a day class, evening class or weekend basis to fit around your other commitments.

Many of the modules will be derived from those studied on the equivalent full-time degree programmes, though some will be designed as unique stand-alone options for part-time students only. All the Foundation Certificates have been developed to enable students to achieve a recognised qualification by selecting those modules relevant to their own personal interests or their future career aspirations.

Detailed information about the Foundation Certificates is available on the College website.

## Higher Education Single Study Modules

Myerscough College has also developed an exciting portfolio of more than 50 Higher Education single study modules – across our entire subject range. Many of these modules are derived from those undertaken on the equivalent full-time degree programmes. They can either be studied for personal interest or as part of a Continued Professional Development (CPD) scheme for employment or membership of an organisation.

The modules provide a unique opportunity for part-time flexible study at Higher Education level, allowing you to mix and match modules from our well-established Foundation Degrees to meet your needs. You can select individual modules or combinations of modules depending on timetable availability (up to a maximum of four full modules in any one academic year.)

Detailed information about the Single Study module portfolio is available on the College website.

## Study Online

The College offers various on-line and blended learning Higher Education courses at Diploma, Foundation Degree, Honours Degree and Postgraduate level, in Sportsturf, Arboriculture, Veterinary Nursing, Farriery, Floral Design, Canine Studies and Golf Management. This enables students from a wide geographic area (including many from overseas) to gain a HE qualification without having to live in close proximity to the College.

These courses continue to grow in popularity and will commence with a new cohort of students in September. All our on-line courses follow a similar structure and curriculum to the full-time courses in this prospectus, using our web based learning environment, Myerscough Canvas.

More information about the online courses, and the Canvas web-based learning environment, is available on the College website.





### Food and Farming Innovation and Technology (FFIT) Centre Project

Myerscough College is launching a new project to support the agriculture and food production industries in Lancashire. The new Food and Farming Innovation and Technology centre at Lodge Farm will create a centre of excellence to develop state-of-the-art precision farming techniques within the livestock and grassland sectors. It will also provide resources to support the development of local food products.

The two storey building will incorporate specialist teaching, demonstration and research facilities, including a Livestock Innovation Centre and the latest grassland equipment, livestock feeding technologies, hybrid tractor power units and crop/field trials equipment.

The centre will open in Spring 2017.



# First class career opportunities



Former NFU President, Peter Kendall, meeting staff and students on a recent College visit.



## Agriculture

Agriculture is currently undergoing a renaissance, with national and international recognition given to the importance of feeding a worldwide population that will increase to nine billion by 2050.

The Food and Agriculture Organisation has declared that this will require a 70% increase in food production. Furthermore the Foresight Report – The Future of Food and Farming – emphasises the need for ‘sustainable intensification’.

High profile TV programmes such as Countryfile, Lambing Live and A Farmer’s Life for Me have all assisted in raising the profile of agriculture. The need for highly skilled and motivated young people to enter a vibrant and dynamic agriculture sector has never been more urgent.

It is estimated that an additional 60,000 skilled staff will be required over the next ten years – in careers such such as practical farm management and as consultants/advisers across the sector.

### Work placements and Enrichment activities

The Foundation Degree programme encourages students to undertake work experience during their studies. Many students have also gone to New Zealand or Australia to do sheep and dairy work, with others heading west to Canada and the United States upon completion of their degree. Such experiences not only help students develop their knowledge and skills but they also prove valuable in terms of improving future employment prospects.

### Resources

- A purpose built Agriculture and Countryside 'Rural Skills' teaching centre with state-of-the art facilities
- Myerscough Farms totalling over 300 hectares of farm and woodland
- Livestock and cereal enterprises (including 250 commercial Holstein dairy cows, 150 dairy heifers, 1000 ewes, 1800 fattening lambs, a beef enterprise and 40 hectares of cereals and forage crops)
- A dedicated four hectare conservation area and countryside management zone
- Comprehensive field study equipment and newly-built laboratories
- State-of-the-art research facilities



Myerscough students have also benefitted from the Lancaster and Morecambe Agricultural and Horticultural Society annual travel scholarship. Foundation Degree and Honours Degree students are also encouraged to participate in the College's annual study tour. This incorporates visits to a range of farms, agricultural research stations and machinery manufacturers either in the UK or overseas.

### Career Opportunities

There are a vast number of career opportunities available to agriculture students beyond the traditional routes of farm management. Former students have gone into diverse careers including Farm Management, National Sales Manager for Dairy Robotic Engineering, NFU Policy advisor, Research Officer, Farm Business Consultant, Animal Nutritionist, Lecturer, Semen Sales Manager, Trainee Agronomist, AI technician, Agricultural Contractor and YFC National Co-ordinator (Ireland). Others have established their own farm-based food companies, including Bowland Outdoor Reared.

### Myexperience

#### From students to agricultural specialists:

We both graduated from Myerscough with First Class honours degrees, excellent employment prospects and a series of job offers. James' interest in animal nutrition has led him to now work for 'For Farmers' as an account manager – advising farmers on the latest nutritional advances for conventional and organic livestock farming. He is also Lancashire YFC County Chairman.

Elizabeth's considerable livestock husbandry skills helped kick-start her career and she's now employed as a Precision Trainer with Cogent, the UK's largest Bull Stud and pioneers of sexed semen technology.

*James Oddie  
and Elizabeth West*



# Agriculture

## Foundation Degree (FdSc) Agriculture

The Foundation Degree is designed to enable students to fulfil the need for highly skilled and qualified people in the agriculture industry. The course has been developed in conjunction with industry specialists to provide a series of modules with a broad-ranging and practical focus.

The 'UK Agriculture' module provides a comprehensive overview of the industry and the systems used for livestock and crop production, along with the support available to UK farmers. This is accompanied by a series of additional modules that will develop your understanding of animal, plant and soil sciences. Remaining first year modules cover crop production (establishment, nutrition, protection, harvesting and storage of a range of crops), animal health and animal welfare.

A range of subjects are covered during the second year of the degree programme. These include nutrition and breeding, livestock management, grassland and forage crop production, farm resource management and a choice of either research methods or Crop Physiology and Production. The Foundation Degree also covers topics such as farmland ecology, biodiversity and a comprehensive overview of business planning and entrepreneurship. This teaches students a range of important factors that are required when making decisions surrounding agricultural finance, human resources and marketing.

To develop your practical skills, a range of work experience opportunities and work-based projects are included. These enable you to relate your academic studies to current issues in the farming industry.

### Course Details

**Duration**  
2 years full-time.

**UCAS Code**  
D402.

**Entry requirements**  
A minimum of 48 UCAS tariff points. See pages 18-19 for more information.

**Assessment**  
Assignments, report writing, case studies, presentations and final examinations.

**Progression**  
To the final year of BSc (Hons) Agriculture programme or to either the dedicated BSc (Hons) Agricultural Livestock Science top-up or

**Agricultural Crop Science (top-up).**

**Career Opportunities**  
Farm Management, Farm Business Advisor, Feed Sales Management, Livestock Specialist, Animal Nutritionists, AI Technicians and Agricultural Supply Industries.

**Additional Activities**  
The course includes a range of field trips, conferences and guest lectures. Students are also encouraged to undertake additional industry qualifications such as ATV Operations, Sprayer Use, Pesticide Application, Livestock Handling and Transport of Animals.



Lodge Farm Dairy Unit



### Enhancement Activities

Study trips are organised to visit a variety of successful agricultural livestock and arable enterprises in the Cumbria, Cheshire, Lancashire, Yorkshire and Wirral areas. These farm businesses have welcomed Myerscough student visits to supplement the learning in specific modules. Farm diversification and commercial energy generation projects are also visited; including wind farms, large scale anaerobic digestion units and biomass plants.

Guest speakers often visit and include industry experts in areas such as crop protection and marketing, agricultural waste management, animal nutrition, livestock technology, AI and breeding. Extra-curricular activities include annual attendance at national events and conferences, including the British Cattle Breeders annual conference.



Foundation Degree students, Killian Sullivan and Shaun Jenkins are using their travel scholarship from the Lancaster and Morecambe Agricultural and Horticultural Society to further their academic research by visiting beef farms in Brazil, Uruguay and Bolivia.

# Agriculture

## BSc (Hons) Agriculture

The Honours Degree programme has been designed to produce graduates who will enter the agriculture industry in supervisory, research or managerial roles. The course allows students to develop their scientific and technical knowledge of livestock and crop production as well as learning essential business skills.

The degree programme investigates current issues in the agriculture industry and the scientific background needed to critically evaluate these factors. Students learn not only about agricultural production but also the wider issues surrounding farming, ecology, sustainability and the rural environment.

The 'UK Agriculture' module provides a comprehensive overview of the industry and the systems used for livestock and crop production, along with the support available to UK farmers. This is accompanied by a series of additional modules that will develop your understanding of animal, plant and soil sciences. Remaining first year modules cover crop production (establishment, nutrition, protection, harvesting and storage of a range of crops), livestock production, data handling, study skills and personal development.

A range of subjects are covered during the second year of the degree programme. These include livestock nutrition and breeding, grassland and forage crop production, farmland ecology, crop physiology and production, career development, research methods and a comprehensive overview of business planning and entrepreneurship. This teaches students a range of important factors that are required when making decisions surrounding agricultural finance, human resources and marketing.

The final year allows students to specialise in either livestock production or crop production and technology, or to continue



to study a mix of both but with a greater emphasis on sustainable land use and policy developments in the rural environment.

An individual research project provides you with the opportunity to undertake an in-depth agricultural investigation in a subject area that interests you, using the information gathering and analytical skills developed during the course.

The final year of the course is also available to external applicants holding a Foundation Degree qualification or a Higher National Diploma.

### Course Details

**Duration**  
3 years full-time.

**UCAS Code**  
D401.

**Entry requirements**  
A minimum of 104 UCAS tariff points. See pages 18-19 for more information.

**Assessment**  
Assignments, report writing, case studies, presentations and final examinations.

**Progression**  
MSc Agriculture and other post-graduate courses.

**Career Opportunities**  
Farm Estate Management, Dairy or Arable Manager, Lecturer, Technical or Managerial roles in the allied industries or roles within DEFRA or similar government organisations.

**Additional Activities**  
The course includes a range of field trips, conferences and guest lectures. Students are also encouraged to undertake additional industry qualifications such as ATV Operations, Sprayer Use, Pesticide Application, Livestock Handling and Transport of Animals.



# Agriculture

## BSc (Hons) Agricultural Livestock Science top-up

This programme offers a specialist route to top-up to an Honours Degree in livestock science for students holding a Foundation Degree or Higher National Diploma in an agricultural related subject, or who have completed two years of the BSc Agriculture programme at Myerscough.

The course provides the opportunity to study issues affecting sustainable agriculture here in the United Kingdom and at a global level. Five modules are studied, allowing for critical analysis of the underpinning science that will shape the future of agriculture, with particular reference to the livestock industry. It is designed to enable successful students to develop key employability skills and prepare for a successful career in the UK livestock sector or overseas.

Modules cover developments in global land use (climate change, energy use, water management and soil degradation), policy developments in the rural environment, sustainable livestock science (water and feed use efficiency, nutrition and breeding) and developments in livestock technology.

An individual research project provides you with the opportunity to undertake an in-depth agricultural investigation in a subject area that interests you, using the information gathering and analytical skills developed during the course.

### Course Details

**Duration**  
1 year full-time.

**UCAS Code**  
D452.

**Entry requirements**  
Successful completion of an HND or Foundaton Degree in a related subject.

**Assessment**  
Assignments, report writing, case studies, presentations and final examinations.

**Progression**  
MSc Agriculture and other post-graduate courses.

**Career Opportunities**  
Farm Estate Management, Dairy Manager, Lecturer, Agricultural Finance and Insurance, Agricultural

**Journalism, Farm Business Advisor, Animal Nutritionists, Livestock Breeding Specialist, Technical or Managerial roles in the allied industries or roles within DEFRA or similar government organisations.**

**Additional Activities**  
The course includes a range of field trips, conferences and guest lectures. Students are also encouraged to maintain and develop further links with local and national agricultural organisations such as Tenant Farmers Association, NFU, Dairy Co, EBLEX, Breed Societies, RASE, agricultural discussion groups and Young Farmers Associations.

# Agriculture

## BSc (Hons) Agricultural Crop Science top-up

This programme offers a specialist route to top-up to an Honours Degree in crop science for students holding a Foundation Degree or Higher National Diploma in an agricultural related subject, or who have completed two years of the BSc Agriculture programme at Myerscough.

The course provides the opportunity to study issues affecting sustainable agriculture here in the United Kingdom and at a global level. Five modules are studied, allowing for critical analysis of the underpinning science that will shape the future of agriculture, with particular reference to the arable industry. It is designed to enable successful students to develop key employability skills and prepare for a successful career in the UK arable sector or overseas.

Modules cover developments in global land use (climate change, energy use, water management and soil degradation), policy developments in the rural environment, sustainable crop science (water and use efficiency, plant nutrition and crop protection) and developments in crop technology.

An individual research project provides you with the opportunity to undertake an in-depth agricultural investigation in a subject area that interests you, using the information gathering and analytical skills developed during the course.

### Course Details

**Duration**  
1 year full-time.

**UCAS Code**  
D448.

**Entry requirements**  
Successful completion of an HND or Foundaton Degree in a related subject.

**Assessment**  
Assignments, report writing, case studies, presentations and final examinations.

**Progression**  
MSc Agriculture and other post-graduate courses.

**Career Opportunities**  
Farm Estate Management, Arable Manager, Lecturer, Plant Breeding Specialist, Agronomist, Agricultural Journalism, Crop chemical Specialist, Crop Marketing.

**Additional Activities**  
The course includes a range of field trips, conferences and guest lectures. Students are also encouraged to maintain and develop further links with local and national agricultural organisations such as NFU, RASE, IACR, BCPC, agricultural discussion groups and Young Farmers Associations.

# Agriculture

## BSc (Hons) Agronomy

The arable industry needs highly skilled crop advisors, plant breeders, research agronomists and policy advisors. This programme is designed to equip students with the necessary scientific and technical knowledge and skills to enter the industry in advisory, scientific, research or managerial roles.

Contemporary issues in the arable industry are explored as is the scientific background needed to critically evaluate these issues. Both internal and external pressures shaping agronomy and crop production are covered including pesticide resistance, legislation, sustainability and the rural environment.

First year modules include Principles of Crop Production which looks at the establishment, nutrition, protection and harvesting of combinable crops. The UK Agriculture module provides a comprehensive overview of the agriculture industry along with the support available to UK farmers. Identification and Ecology of Crop Pests, Diseases and Weeds is of central importance to graduates entering the agronomic industry and other modules cover crop genetics, data handling, study skills and personal development.

Agronomic principles are applied to a broader range of crops in the second year with the modules Non-combinable Crop Production and Grassland and Forage Crop Production. The current and future roles of precision technologies in crop production as well as agronomic research and development are covered alongside topics such as crop physiology, farmland ecology and research methods.

The final year provides the opportunity to study issues affecting sustainable crop production at the domestic and global level, allowing for critical analysis of the underpinning science that will shape the future of the industry. The development and roles of new technologies and practices will be explored as will the influence of policies in the rural environment and pressures on the management of land.

### Course Details

**Duration**  
3 years full-time.

**UCAS Code**  
DD40.

**Entry requirements**  
A minimum of 104 UCAS tariff points. See pages 18-19 for more information.

**Assessment**  
Assignments, report writing, final year research project, case studies, presentations and final examinations.

**Progression**  
MSc Crop Sciences and other postgraduate courses.

**Career Opportunities**  
Agronomist, plant breeder, arable manager, policy advisor, researcher, lecturer, technical or managerial roles in the allied industries or roles within DEFRA or similar government organisations.

**Additional Activities**  
The course includes a range of field trips, conferences and guest lectures.

# Agriculture

## MSc Integrated Crop Management

This online MSc integrates topics such as pest dynamics, genetic improvement, crop technology, sustainable practice and soil management alongside a broader critical evaluation of crop sciences enabling the design of bespoke ICM programmes for given situations. It is aimed at graduates in biological sciences who are looking to find employment as agronomists, farm advisors, agro-technical specialists particularly in allied agricultural industries.

Current pressures exist from both within and outside the industry, including building resistance to agrochemicals, evolving legislation, and the adaption to climate change. These topics are all explored in detail throughout the course giving students the knowledge and skills necessary to implement ICM.

The course is delivered on a part-time basis which provides learners the flexibility to retain full-employment during the three years of the course. This will enable individuals to develop their knowledge and skills without the need for a gap in employment.

All teaching materials will be made available to learners via the College's Virtual Learning Environment. Content will include recorded online events using video conferencing software that is used to simulate an authentic classroom experience to students in a distributed environment.

An individual research project on the final year of the programme offers you the opportunity to undertake an in-depth investigation in a subject area that interests allowing you to you use the information gathering and analytical skills already developed during the course.

### Course Details

**Duration**  
3 years part-time online.

**UCAS Code**  
Not applicable. Please apply directly to the College.

**Entry requirements**  
Successful completion of a relevant Honours Degree, with a minimum 2:2 classification.

**Assessment**  
Modules are assessed using a variety of methods, including written reports, essays, literature reviews, dissertation, research proposal, presentations and group work.

**Progression**  
PhD by Research

**Career Opportunities**  
The course helps equip students to operate as agronomists, farm advisors, agro-technical specialists particularly in allied agricultural industries. Integrated Crop Management is a discipline with global application. The course aims to cover concepts and examples from a range of environments where crops are grown. The syllabus of the course will permit graduates to consider technical roles anywhere on the planet.



Our Foundation Degree in Ecology and Conservation Management is ideal for anyone wishing to pursue a career in areas such as ecology, conservation and environment. With current concerns about environmental damage and the need to conserve habitats for future generations, there has never been a better time to obtain an understanding of the environment and to develop a career in this sector.

Dune stabilisation at Formby



## Getting to grips with the great outdoors



The Foundation Degree in Ecology and Conservation Management concentrates primarily on habitat management, species identification and ecological survey skills. The Rural Resource Management top-up programme further develops these themes, with a key focus on land use, rural policy and landscape ecology.

A professional ecological consultant is part of the course team and we have excellent links with the National Trust, Natural England, Lancashire Wildlife Trust and other land managers in the North West.



### Career Opportunities

In this sector, there is a growing shortage of skilled ecological surveyors with plant and animal identification skills. Examples of other career opportunities include parks manager, urban green space manager, countryside ranger, nature reserve warden, farm conservation advisor, education officer, reserves officer and fisheries manager.

Many job opportunities exist within the conservation and commercial sectors, and potential employers include the RSPB, the British Trust for Ornithology, the Environment Agency, The National Trust, Natural England, local authorities, wildlife trusts, United Utilities and ecological consultancies.



### Resources

- A purpose built Agriculture and Countryside 'Rural Skills' teaching centre with state-of-the art facilities.
- A dedicated four hectare conservation area and countryside management zone.
- State-of-the-art research facilities
- 30 acres of woodland
- Comprehensive field study equipment
- Access to the River Brock, a clean high quality lowland river



### Myexperience

#### From student to conservation expert

The Myerscough experience has, quite simply, changed my life for the better. The course has provided me with essential background knowledge and confidence to be able to progress to a Master Degree in Conservation Management. The Myerscough staff have expert knowledge across a range of subjects – from habitat management and field skills to botanical research and soil science! Winning the student of the year award was a real honour, but I especially enjoyed the field trips – to put the academic theory into practice.

If you're thinking about a Countryside Management course at Myerscough, just do it!

*Diane Rollin*



## Countryside and the Environment

Foundation Degree (FdSc)  
Ecology and Conservation Management



If you are interested in specialising in countryside management or ecological survey work, this course will provide you with the relevant skills to work in the industry. The course is ideal for students with a passion for natural history and the environment, enabling you to study topics such as habitat management, plant and animal identification, ecological survey techniques and geographical information systems – vital skills where current legislation demands environmental impact assessments in a range of situations. Additional modules cover trees and woodlands, entrepreneurship, UK agriculture, plant biology and soil science. The College is within easy reach of internationally important habitats including Morecambe Bay, Gait Barrows National Nature Reserve, Leighton Moss RSPB Nature Reserve, limestone grasslands, reedbeds, peat bogs, moorland and sand dunes. Many of these habitats will be studied during regular site visits throughout the course, which is supplemented by a one-week field trip.

Myerscough has excellent links with the Wyre Borough Council Coast and Countryside Service, The Environment Agency, Natural England, Lancashire Wildlife Trust and local environmental consultants. Many of these organisations are actively involved in the delivery of the course.

To develop your practical skills, a range of work experience opportunities and work-based projects are included. They enable you to relate your academic studies to current issues in countryside management.

### Course Details

**Duration**  
2 years full-time.

**UCAS Code**  
CD14.

**Entry Requirements**  
A minimum of 48 UCAS tariff points. See pages 18-19 for more information.

**Assessment**  
Class presentations, practical exercises, assignments, case studies, report writing.

**Progression**  
BSc (Hons) Rural Resource Management top-up.

**Career Opportunities**  
Ecological surveyors, ecological consultants, countryside ranger, nature reserve warden, farm conservation advisor, education officer, reserves officer and fisheries manager.

## Countryside and the Environment

BSc (Hons) top-up  
Rural Resource Management



The Rural Resource Management top-up programme has been designed to provide a fast-track route to an Honours Degree, for students holding a related Foundation Degree or Higher National Diploma.

This course will broaden students' view of the management of the UK's rural resource. It includes the analysis of the legislation, issues, policy and planning that drive rural change; an examination of landscape scale ecology and investigation of land use from a sustainability perspective.

Core modules include Sustainable Global Land Use (climate change, energy use, water management and soil degradation and how current techniques could be altered to achieve lower ecological and environmental impact) and Policy Developments in the Rural Environment (effects of climate change, carbon footprinting, loss of biodiversity and landscape change).

There is also a choice of two optional modules:

- Applied Ecology (principles and practices) – taught at UCLan's Preston Campus
- EIA and Environmental Management Systems – taught at UCLan's Preston Campus
- Landscape Ecology (the flora, fauna and cultural components of a landscape, incorporating Geographical Information System – GIS)

Students also conduct their own research project and present their findings. This is an integral and exciting part of the course, which provides the opportunity to undertake a significant piece of research and develop real expertise in a specific area of ecology, conservation or land management.

### Course Details

**Duration**  
1 year full-time or 2 years part-time.

**UCAS Code**  
D490.  
Not applicable for part-time applicants. Please apply direct to the College. Application forms are available from the website or from Course Enquiries on 01995 642211.

**Entry Requirements**  
Successful completion of an HND or Foundation Degree in a related subject.

**Assessment**  
Assignments, practical work and examinations.

**Progression**  
Masters Degree or PhD in a related subject.

**Career Opportunities**  
Organisations such as DEFRA, Environment Agency, Natural England, local planning authorities, Councils, advisory bodies and land management consultancies.



Myerscough  
College



# Open Day and Country Fair

Sunday 11th June 2017  
Sunday 10th June 2018\*

WYRE TOURISM AWARDS "EVENT OF THE YEAR"

## More than 200 exciting attractions

- Motorsport, Machinery and Driving Displays
  - Sports Tournaments & Children's Coaching Sessions
  - Animal Academy and Veterinary Nursing Events
  - Equestrian Arena Shows and Demonstrations
  - "Made in Lancashire" Food Hall
  - Beautiful Gardens, Live Music and Entertainment
  - Uniformed Services – Police, Army, Navy & Air Force
  - Photography and Floral Design Exhibitions
  - Agriculture, Countryside and Conservation Arena
  - Archery, Laser Clay & Air Rifle Shooting
  - The Sheep Show and Falconry Demonstrations\*
  - Gundog Scurry and Thwaites Shire Horses\*
  - Full Catering, Refreshments and Bar
- ...and many more activities, exhibitors & displays!

\*Subject to confirmation

[www.myerscough.ac.uk](http://www.myerscough.ac.uk)

for advance booking discounts and preview pages.

Myerscough College, Bilborrow, Preston. PR3 0RY Telephone: 01995 642222

**ACTION PACKED FUN DAY OUT WITH SOMETHING FOR ALL THE FAMILY!**

Plus careers and course advice and demonstrations from all our subject areas.





# Animal Studies

Britain is well regarded as a nation of animal lovers, from companion pets to large animal collections. This has resulted in the development of a multi-million pound industry, ranging from well known national pet feed companies to pet stores, catteries, kennels and numerous other businesses which provide for the needs of animals.

If you have a strong passion to work within the animal industry our degree courses cover a wide range of topics from animal behaviour and welfare through to more specialised areas such as canine behaviour and training. You will get the opportunity to care for a wide range of companion animals such as dogs, cats, rabbits, ferrets, farm animals and ponies, and more exotic species, such as geckos, uromastix, chameleons and a wide range of invertebrates.

## Myexperience

### From student to animal counsellor:

Animals have issues too! The anxieties and phobias they suffer from don't just affect the pets, but their owners as well – and that's where I come in. Animal counselling was one of so many careers open to me with a first class honours degree (and a top project award for my dissertation!). It takes patience and expertise to help in the treatment of a problem pet but I'm loving the challenge.

*Helen Clayton*



# all creatures great, small and behaviourally challenged



## Resources

Myerscough is home to a purpose built Animal Studies Centre which houses the following facilities:

- An aquarium of tropical, cold water and marine fish, incorporating amphibians and crustaceans
- A specialised herpetology room housing species from all continents, covering a range of habitats
- Cattery – working in partnership with the Blue Cross
- A block of nine day kennels
- A purpose built Sulcata Tortoise enclosure
- Farmyard animals, including goats, sheep, pigs, geese, turkeys, ducks, Shetland ponies and alpacas
- A fully equipped grooming parlour
- Facilities for trial work and research
- Specialist aviaries housing birds from around the world
- A range of commonly kept and exotic species of rodents
- A commercial canine hydrotherapy unit in the Canine Health Studio
- Specially lit Cavern, housing nocturnal species and invertebrates
- Free range poultry paddocks housing a large variety of species and breeds
- Specialist area dedicated to rabbits and guinea pigs containing spacious enriched pens with a variety of breeds including British and continental giant rabbits and Peruvian Guinea Pigs
- Ferrets houses in purpose built enclosure with indoor and outdoor runs
- Scottish Wildcat enclosure (part of national conservation programme)

## Shamwari Game Reserve visit

Students from Myerscough on a recent trip to the Animal Rehabilitation Centre at Shamwari Game Reserve, South Africa (additional cost).



# Animal Studies



## Foundation Degree (FdSc)

### Welfare of Animals

(Routes in Management, Wildlife Conservation, Health Care Management or Animal Collections)

The Foundation Degree syllabus has been designed to ensure that students receive an ideal blend of scientific knowledge, academic theory and practical skills training. Increasing public awareness of animal welfare is driving the development of employment prospects and careers. Opportunities exist in animal training, zoos (and the care of endangered species), the retail animal trade, the care of companion animals, the regulatory authorities and animal welfare charities.

The Foundation Degree covers a comprehensive range of subjects, including animal science (anatomy and physiology), animal health and pharmacology, animal behaviour, training and welfare. You will also study animal welfare legislation as well as the breeding, nutrition and care of both mammalian and non-mammalian species.

To develop your practical skills, a range of work experience opportunities and work-based projects are included. These enable you to relate your academic studies to current issues in animal welfare.

Depending upon which option route you choose, the following modules will also be studied:

**Management** – Business Management, Business Planning, Special Event and Facility Management

**Wildlife Conservation** – Behaviour of British Wild Mammals, Ecological Survey Techniques, International Wildlife Conservation

**Health Care Management** – Animal Health Care Management, Wildlife Rehabilitation, Client Interface Skills, Principles of First Aid, Applied Diagnostic Techniques

**Animal Collections** – Introduction to Animal Collections, Special Event and Facility Management, Conservation and Breeding of Endangered Species, Education within Animal Collections

## Course Details

### Duration

2 years full-time.

### UCAS Code

Management D328.  
Wildlife Conservation D331.  
Health Care Management D330.  
Animal Collections D329.

### Entry Requirements

A minimum of 48 UCAS tariff points. See pages 18-19 for more information.

### Assessment

Examinations, assignments, presentations and portfolio.

### Progression

To the final year of BSc (Hons) Animal Behaviour and Welfare or the dedicated Animal Conservation Science (top-up).

### Career Opportunities

A wide range of exciting careers are available. These include opportunities in the commercial and welfare sectors as well as specific animal management, animal nursing and animal collection roles.

# Animal Studies



## BSc (Hons)

### Animal Behaviour and Welfare

This three-year degree programme provides students with an ideal opportunity to focus on the issues relating to animal welfare, health, physiology and behaviour, whilst familiarising themselves with current and emerging scientific research. The course will prepare you for a range of careers throughout the animal care industry, including research and development within the field of animal behaviour, welfare and breeding.

The first year of the degree programme covers topics such as animal science (anatomy and physiology), animal health and animal behaviour as well as introducing the themes of ethics, training, welfare, physiology, pharmacology, data handling, study skills and personal development. Several of these modules are shared with the Foundation Degree, although tutorial sessions and assignments on the Honours Degree programme have a stronger academic and research focus.

The two core themes are further developed in year two along with modules introducing welfare legislation, animal nutrition, breeding and genetics, research methodology, biological basis of behaviour and the human/animal interface. An option module is also included, enabling you (subject to timetabling) to choose a specialism from one of our Management, Wildlife Conservation, Health Care or Animal Collection routes.

Year three of the course includes a comprehensive industry related research project and the development of the behaviour and welfare themes studied in years one and two. A specific focus is given to behavioural ecology, the analysis and evaluation of canine and feline behaviour and the application of animal behaviour to industry case studies.

## Course Details

### Duration

3 years full-time.

### UCAS Code

D320.

### Entry Requirements

A minimum of 104 UCAS tariff points. See pages 18-19 for more information.

### Assessment

Assignments, practical work, tests and examinations.

### Progression

MSc, MPhil or PhD.

### Career Opportunities

Pet Behaviour specialists, animal training, Welfare Societies, Zoological Gardens, Welfare Assurance, Research and Development, Local Authorities, Department for Environment, Food and Rural Affairs (DEFRA), Her Majesty's Customs and Excise, Animal Welfare Officers, Animal Reserves and Sanctuaries, Journalism.

# Animal Studies



## BSc (Hons) Animal Conservation

### Science top-up

This programme offers a specialist route to top-up to an Honours Degree in Animal Conservation Science for students holding a Foundation Degree or Higher National Diploma in an animal based discipline.

The degree course provides the opportunity for students to develop their knowledge and skills in relation to indigenous and exotic animal conservation; focusing on the issues relating to animal welfare and behaviour, whilst familiarising themselves with current and emerging scientific research relating directly to animal conservation. The course is designed to produce competent, compassionate and skilled graduates who are equipped for the world of work.

Modules cover advances in animal behaviour and welfare along with behavioural ecology (examining the survival value of behaviour by exploiting resources, avoiding predators and maximising reproductive success.) In the Applied Behavioural Studies module a series of 'real life' case studies will be carried out to collect evidence related to behavioural issues. Animal Conservation Science examines current conservation strategies, critically evaluating their effect on biodiversity through research and discussion. The module also investigates the management of ecosystems and the strategies used to conserve them.

An individual research project provides you with the opportunity to undertake an in-depth animal conservation investigation in a subject area that interests you, using the information gathering and analytical skills developed during the course.

## Course Details

### Duration

1 year full-time.

### UCAS Code

A36C.

### Entry Requirements

Successful completion of an HND or Foundaton Degree in a related subject.

### Assessment

Assignments, report writing, case studies, presentations and final examinations.

### Progression

MSc Animal Science and other post-graduate courses.

### Career Opportunities

Pet Behaviour specialists, animal training, Welfare Societies, Zoological

Education, Welfare Assurance, Research and Development, Local Authorities, Department for Environment, Food and Rural Affairs (DEFRA), Her Majesty's Customs and Excise, Animal Welfare Officers, Animal Reserves and Sanctuaries, Journalism.

### Additional Activities

All students are encouraged to pursue membership of the Association of the Study of Animal Behaviour (ASAB) and the British Society of Animal Science (BSAS) as well as pursuing scholarships and travel awards with other professional animal organisations.

# Animal Studies



## Foundation Degree (FdSc)

### Canine Studies

This innovative new part-time Foundation Degree programme has been designed to provide students with a comprehensive knowledge of canine behaviour and training. The course provides an excellent blend of scientific knowledge, academic theory and practical skills training. It is an ideal choice for anyone wanting to develop a career in this fast-growing sector.

The majority of the programme is taught by distance-learning, using the web-based learning materials on Myerscough's popular BLOOM learning network. Students attend College for just three study weekends each year.

The first year of the course introduces the concepts of canine behaviour and the scientific knowledge surrounding animal behaviour. Students explore natural behavioural patterns and influences on behaviour. For example Canine Ontogeny investigates the influences and evidence for canine development and Canine Learning and Training Theory looks at the diverse roles of animals in society and training techniques.

The second year syllabus addresses a range of key factors including canine breeding and canine health along with canine nutrition, an introduction to pharmacology and canine welfare and legislation. The business planning module provides students with a broad introduction to this area and acts as a foundation of knowledge for potentially running your own business in the future.

Final year modules explore key advances in canine behaviour, touching on areas such as emotionality, stress, cognition and the question of animal consciousness. Canine Rehabilitation focuses on an area of study that is rapidly developing and the issues surrounding behavioural problems in domestic dogs.

## Course Details

### Duration

3 years part-time distance learning, with a series of study weekends each year (September, December and March/April).

### UCAS Code

Not applicable – please apply direct to the College. Application forms are available from the website or from Course Enquiries on 0800 652 5592.

### Entry Requirements

A minimum of 48 UCAS tariff points. See pages 18-19 for more information.

### Assessment

Examinations, assignments, case studies and portfolio.

### Progression

To the final year of BSc (Hons) Animal Behaviour and Welfare.

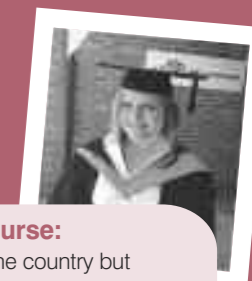
### Career Opportunities

A wide range of exciting careers are available. These include opportunities as animal behaviour specialists, pet dog trainers or pet behaviour counsellors.



Myerscough School of Veterinary Nursing has been an established provider of education and training for veterinary nurses for more than 40 years, and was granted approval from the Royal College of Veterinary Surgeons in 1975. In this time the College has successfully taught many small animal and equine student nurses from all parts of Britain and Europe.

Our degree courses encompass all aspects of modern veterinary nursing, combining professional nursing skills with academic knowledge and research. They also develop the interpersonal skills which are so vital when working in a multidisciplinary team and interfacing with clients, as well as teaching the importance of health and safety, ethical, legal and animal welfare issues within practice.



## Myexperience

### From student to veterinary nurse:

I looked at similar courses around the country but Myerscough ticked all the right boxes. I'd heard about the College's reputation already and, as a result, it was a perfect fit. I'm glad I chose Myerscough. The course is everything I thought it would be. It's a packed timetable and the learning is very intense which meant that it was stressful at times, but that was what I liked about it and it kept me focussed. An added challenge, being a deaf student, has been building my communication skills for the transition to a busy veterinary practice. I've had massive support from the college to help me. The tutors care about you and want you to succeed. I got all the extra help I needed, including one to one sessions and extra appointments with my tutors. I always wanted to work with animals and it's all worked out perfectly. I won an award at graduation for my dedication and hard work, and am now thoroughly enjoying working as a nurse at Vets4Pets.

*Beth Acton*



# Excellence in practice, with superb career prospects



### Study success

Myerscough College is one of the UK Higher Education institutions with full RCVS accreditation, which means that students who successfully complete their FdSc Veterinary Nursing degree can progress directly onto the RCVS VN register, receiving their RVN certificate and badge at graduation.

## Resources

Myerscough College's purpose built Veterinary Nursing Centre includes:

- A fully-equipped small animal operating theatre
- A radiography and dark room with ancillary equipment and ultra-sound scanner
- Anatomical, topographical and resuscitation models
- A suite of isolation and veterinary examination rooms
- Animal rehabilitation wards
- A range of housing units for different species of animals
- A range of mares, foals and young stock on a self-contained small stable yard



## Useful Contact

### Royal College of Veterinary Surgeons

Belgravia House, 62-64 Horseferry Road, London SW1P 2AF  
Tel: (0207) 222 2001 [www.rcvs.org.uk/education](http://www.rcvs.org.uk/education)

A helpful Veterinary Nursing Careers leaflet is available from the "I want to be a Veterinary Nurse" link.

# Veterinary Nursing

Foundation Degree (FdSc)  
Veterinary Nursing

Veterinary Nursing is a major specialism of Myerscough College and the Foundation Degree course (developed in conjunction with the School of Health at the University of Central Lancashire) provides an ideal opportunity for anyone wishing to develop their career and attain registered veterinary nursing status.

Key elements of the first year of the course include anatomy and physiology of the dog and cat, comparative anatomy including horses, animal health and welfare, professional development, employability, nursing skills and nursing support in the veterinary practice.

To satisfy RCVS regulations relating to practical experience, students spend 16 weeks in year one, the whole of year two and 14 weeks in year three as a member of the veterinary team in an approved training practice (TP). Here you will develop your veterinary nursing skills and compile evidence of competency as prescribed by LANTRA's National Occupational Standards and the RCVS Day One Skills for Veterinary Nurses. During this time students are supported by the practice placement officer, their course tutor, personal tutor and practice clinical coach. Additional support materials are available on the College's online virtual learning environment, Canvas.

The final year of the course further develops the academic and practical themes of nursing. Subjects include veterinary nursing care, diagnostic imaging, peri-operative care, laboratory diagnostics, anaesthesia, research skills and emergency/critical care nursing. An individual research project provides you with the opportunity to undertake an in-depth review of a subject area that interests you, using the information gathering and analytical skills developed during the course. In addition, you will also undertake a module preparing you for professional practice. This includes the RCVS registration, ethical consideration and practical competency.



Myerscough College's new state-of-the-art Veterinary Nursing training centre.



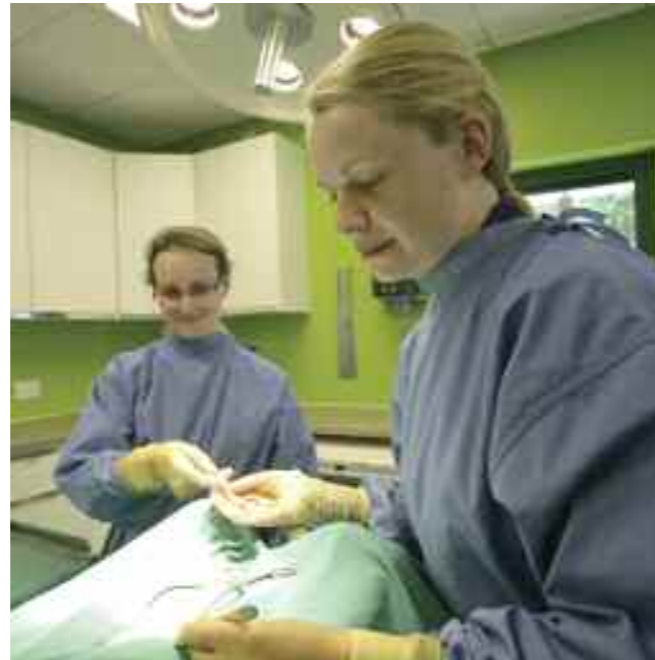
# Veterinary Nursing

BSc (Hons) top-up  
Veterinary Nursing

This Honours Degree top-up programme encompasses all aspects of veterinary nursing, with three central themes running through the course. One thread focuses on the student's ability to understand and develop research skills, another on building communication, coaching and mentoring skills, whilst the third focuses on enhancing the student's nursing skills, knowledge and confidence in practice.

The modules studied cover professional development skills (focusing on leadership, mentoring, coaching, teaching and supervision), nursing support of pain management, rehabilitation therapy and nursing of life-limiting conditions (common conditions affecting geriatric animals and nursing care of animals suffering from life limiting illness.)

An integral and exciting part of this course is the opportunity for students to conduct their own piece of original research in an area of veterinary nursing that interests them. The dissertation will facilitate the development of research skills rather than the quest for new knowledge, although this will be encouraged.



## Course Details

**Duration**  
3 years full-time with a veterinary practice placement each year.

**UCAS Code**  
D313.

**Entry Requirements**  
5 or more GCSEs at Grade C or above, to include English Language, a Science and Maths. Plus A Levels to a minimum of 56 UCAS tariff points, to include a biological science at Grade C or above.

Or Level 3 Extended Diploma in an animal based subject at MPP (or Level 3 Diploma at MM) including a distinction in at least one biology based unit. Applicants must also provide evidence of a minimum of 30 days work

experience in a small animal veterinary practice prior to commencing the course, 10 days of which must be completed prior to interview.

**Assessment**  
Oral presentations, assignments, written and practical examinations and Nursing Progress Log building.

**Progression**  
To the BSc (Hons) Veterinary Nursing top-up.

**Career opportunities**  
Nurse in General Veterinary Practice, Surgical/Medical Nurse in Specialist Referral Veterinary Practice.



# Veterinary Nursing

Diploma of Higher Education  
Clinical Veterinary Nursing

This innovative Diploma course is run in conjunction with the School of Health at the University of Central Lancashire and validated by the Royal College of Veterinary Surgeons. Successful completion of the course (and an additional Integrative Project) also leads to the attainment of the RCVS Diploma in Advanced Veterinary Nursing (Equine or Small Animal) (Dip AVN.)

The course has both a clinical and theoretical perspective and is ideal for both personal and professional development of qualified registered veterinary nurses. The majority of the programme is taught by blended-learning, using the web-based learning materials on Myerscough's popular Canvas learning network. Students attend College for just three study weekends each year and an introductory three day study session.

Modules studied in year one include Law, Ethics and Professional Practice (half module), Essential Study, IT and Research Skills (half module), Applied Veterinary Physiology and Systematic Delivery of Veterinary Nursing Care.

Year two incorporates specialist clinical option modules. Students choose three options dependent upon their planned clinical preference. The module list includes: Veterinary Anaesthesia, Veterinary Theatre Practice, Veterinary Surgical Nursing, Veterinary Medical Nursing and Diagnostic Imaging.

## Course Details

**Duration**  
2 years part-time blended learning, with an introductory three-day September study programme (two-days in year 2) and three study skills weekends each year (November, February and April).

**UCAS Code**  
Not applicable – please apply direct to the College.

**Entry Requirements**  
The minimum qualification for entry will be a tariff agreement of Level 4 complete, i.e. students must be qualified veterinary nurses, listed on either the equine or small animal list on the RCVS register with a minimum of one year's post-qualification practice experience. Students must also have access to at least

12 weeks in a TP/PSS Tier 2 practice/referral practice or university hospital annually throughout the course.

**Assessment**  
Oral presentations, assignments, written and practical examinations.

**Progression**  
BSc (Hons) Clinical Veterinary Nursing.

**Career Opportunities**  
Head Nurse in general practice, Senior Surgical/Medical Nurse in specialist referral practice, Lecturer/Senior Nurse in education or veterinary school, Technical Advisor in pharmaceutical companies, Animal Health Consultancy, Management positions in welfare organisations.

## Course Details

**Duration**  
1 year full-time.  
2 years part-time online blended learning (with approximately four College-based study-days spread throughout each year.)

**UCAS Code**  
D312.

**Entry Requirements**  
FdSc Veterinary Nursing qualification with a minimum of a 'Merit' profile. Evidence of having completed a research-based module at Level 5 to 'Merit' standard. Employment or agreed access to a placement in practice for 12 weeks annually – in a TP standard small animal practice.

**Assessment**  
Assignments, dissertation, clinical scenario, written and practical examinations.

**Progression**  
MSc, MPhil or PhD opportunities.

**Career Opportunities**  
Head Nurse in general practice, Senior Surgical/Medical Nurse in specialist referral practice, Lecturer/Senior Nurse in education or veterinary school, Technical Advisor in pharmaceutical companies, Behaviour Counselling, Animal Health Consultancy, Management positions in welfare organisations.

Arboriculture involves all aspects of the care and management of amenity trees, so that people and trees can co-exist in a sustainable environment.

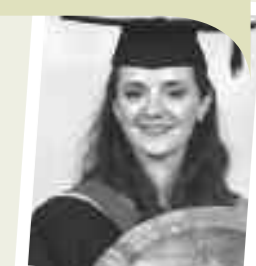
The arboriculture industry is rapidly expanding, fuelled by growing awareness of the need for correct tree management and heightened public interest in environmental issues. This has led to a significant increase in demand for arboriculture specialists who can work alongside allied professionals such as planners, landscape architects and environmental consultants.

## Myexperience

### From student to tree officer:

I was unemployed for two years before moving into arboriculture. I started the BSc (Hons) in Arboriculture at Myerscough in 2010. I got my practical qualifications in the first year and then worked part-time as a tree surgeon alongside my studies. In 2013 I graduated and moved to Edinburgh to take up my current job as a Tree Officer for the Council. This role involves management of public trees, disease control and running a small tree nursery. The course at Myerscough gave me the knowledge and skills I needed for the career I wanted in public sector urban forestry.

*Ruthe Davies*



# Setting the highest standard in tree management

Arboriculture and Urban Forestry degree courses at Myerscough College have been fully accredited by the Institute of Chartered Foresters. They integrate arboricultural science and technology with the business skills required to work at a strategic level within arboriculture.

We work closely with employers and industry organisations to ensure that our students have the necessary skills and expertise to meet the requirements of this growing industry and for those who wish to become a Chartered Arboriculturist.



Ongoing research into tree forks

## Resources

Myerscough College is renowned as a Centre of Excellence for Arboriculture and Urban Forestry.

- Experienced and highly qualified staff in a range of specialist fields
- Unrivalled Higher Education Arboriculture library
- Virtual learning environment with unique online resources
- Specialist decay equipment
- Arboretum and woodland
- Scientific laboratories and research facilities
- Close links with industry and research programmes
- Comprehensive range of tree climbing equipment
- Mobile arboriculture unit for off-site practical work
- 50 chainsaws and associated equipment
- Indoor climbing facility



Myerscough College is at the forefront of developments in arboriculture and is regarded by many as the leading UK establishment for higher education in the subject. Myerscough introduced the UK's first Foundation Degree and the first Honours Degree in Arboriculture. It went on to develop the first online degrees and, most recently, the first Masters Degree in Arboriculture and Urban Forestry. It continues to set the international standard for higher education in arboriculture, with many graduates going on to make significant contributions to the industry.

## Career Opportunities

There are considerable employment opportunities in both local authorities and the private sector: in contract management, tree surveying, planning, utility vegetation management and consultancy. Myerscough students are highly sought after and recent graduates can be found working in highly rewarding positions throughout the industry.

- Arboricultural Consultant
- Botanical Garden Management/Collections Management
- Lecturer and Researcher

- Self-employed Arboricultural Consultant
- Local Authority Tree Officer
- Arboricultural Contract Manager
- Arboricultural or Plant Physiology Research

Case studies can be found in our dedicated Arboriculture course leaflet which can be downloaded from the Higher Education Arboriculture pages on the College website.



# Arboriculture and Urban Forestry



Foundation Degree (FdSc)  
Arboriculture

The Foundation Degree is ideal for anyone new to arboriculture who wants to work in this rewarding and exciting industry. It is also a popular option for those people currently working in the industry who want to progress to supervisory or management positions. Employers look for a combination of managerial and technical skills in the science and technology of tree care. This course integrates both these aspects to ensure that you are fully equipped with the academic knowledge and practical skills for work at management level.

Students learn how to survey and inspect trees, diagnose decay and integrate tree biology and soil science into tree care and management strategies. A focus is also given to 'tree production and establishment', highlighting a range of current and innovative new practices in the production of tree nursery stock and the challenge of planting trees in urban locations. The course also investigates tree law, tree protection, safe working practices and the social, environmental, economic and aesthetic benefits of trees. A choice of option modules enables you to develop your skills in research methods and data analysis or in business and entrepreneurship (covering business planning, marketing, finance and the importance of communication skills, teamwork and leadership).

The acquisition of practical skills and experience is an integral part of the Foundation Degree course, with dedicated modules covering work skills development and work-related projects, where students work with their project supervisor to develop and manage the project as well as reporting on the outcomes.

Successful completion of the Foundation Degree provides access to the final year of the Honours Degree programme.

This course is also available for part-time online study. See page 24.

## Course Details

### Duration

2 years full-time.  
3 years part-time online.

**UCAS Code**  
D518.

### Entry Requirements

A minimum of 48 UCAS tariff points. See pages 18-19 for more information.

### Assessment

Assignments, report writing, presentations, written examinations, portfolios of evidence.

### Progression

To the final year of BSc (Hons) Arboriculture and Urban Forestry (full-time onsite or online part-time).

### Career Opportunities

Assistant Local Authority Tree Officer, Commercial Tree Care Manager, Arboretum Curator, Tree Surveyor, Assistant Consultant in Private Practice, Utility Arboriculture.

# Arboriculture and Urban Forestry



BSc (Hons) Arboriculture and Urban Forestry

The BSc (Hons) Arboriculture and Urban Forestry programme is focused on delivering contemporary approaches to tree management, informed by the latest academic research. It equips students with the ability to effectively gather information, solve problems, make decisions and communicate their opinion; essential skills within the professional tree care industry.

Fundamental plant and soil science underpins many decisions on tree management. Students learn about tree biology and tree pathology. They learn to identify, survey and inspect individual trees as well as how to think strategically about the management of the urban forest.

The degree programme covers a wide range of current arboriculture issues, including tree production and establishment, epidemic outbreaks of disease affecting trees, detection of decay in trees and the use of biotechnology in developing disease detection technologies and stress resistant cultivars. Issues of environmental sustainability are emphasised throughout the course.

Students also gain an understanding of the importance of tree biomechanics to tree stability and the social, environmental, economic and aesthetic benefits of trees. Additional modules cover tree planning and protection, development sites, professional practice, legal frameworks and the implementation of tree risk management strategies.

An integral and exciting part of this course is the opportunity for students to conduct their own piece of original research in an area of arboriculture that interests them. This not only allows a real area of expertise to be developed but gives Myerscough students further recognition as they progress to employment.

The BSc course is accredited by the Institute of Chartered Foresters and gains 8 points towards Chartered Arboriculturist or Chartered Forester status.

## Course Details

### Duration

3 years full-time.  
Final Year Direct Entry available for those with FdSc/HND (1 year full-time or 2 years part-time online).

**UCAS Code**  
D500.

### Entry Requirements

A minimum of 104 UCAS tariff points. See pages 18-19 for more information.

### Assessment

Assignments, report writing, presentations, written

examinations, research dissertation.

### Progression

MSc/PGDip Arboriculture and Urban Forestry.

### Career Opportunities

Consultant in Private Practice, Local Authority Tree Officer, Government Agencies, Planning and Development Consultant, Commercial Tree Care Manager, Arboretum Curator, Arboricultural Research or Lecturer.

# Arboriculture and Urban Forestry



MSc/Postgraduate Diploma  
Arboriculture and Urban Forestry

This Masters course is an excellent means to formally extend your professional development in the areas of Arboriculture and Urban Forestry. The course addresses current issues in the industry from a critical standpoint evaluating existing strategies, procedures and practices.

Arboriculture is the science and practice of tree care and management. Urban forestry involves greening our towns and cities to create a healthy and sustainable urban environment.

The numerous environmental, economic and social benefits of urban trees and woodlands can dramatically improve the quality of life in our towns and cities. The need to establish, manage and regenerate the urban forest resource is therefore important to address in all our towns and cities around the world. Novel means of assessing urban forests are now available, making this an exciting discipline in which to work.

The course investigates a wide range of tree management, development and urban greening issues. Related disciplines such as sustainability, urban planning, community partnership and biosecurity will be studied within the context of arboriculture and urban forestry to develop a technically well-informed approach to urban tree management and urban greening. Site visits and seminars are integral to the course.

This course is also available for part-time online study. See page 24.

A Postgraduate Diploma will be awarded to students who successfully complete all elements apart from the Dissertation module. The MSc course is accredited by the Institute of Chartered Foresters and gains 6 points towards Chartered Arboriculturist or Chartered Forester status. The Postgraduate Diploma gains 4 points.

## Course Details

### Duration

MSc – 1 calendar year full-time.  
MSc – 3 years part-time or online.  
PGDip – 1 academic year full-time.  
PGDip – 2 years part-time or online.

### UCAS Code

Not required – please apply directly to the College.

### Entry Requirements

Successful completion of a relevant Honours Degree, with a minimum 2:2 classification.

### Assessment

Assignments, dissertation, essays, reports and presentations.

### Progression

PhD by research.

### Career Opportunities

Local Authority Tree Officer, Government Agencies, Commercial Tree Care Companies, Consultancy Practices, Planning and Development, Lecturer or Researcher, institutions involved with Land Management.







The equine industry in the United Kingdom is expanding rapidly, with a turnover approaching £4.5 billion per year. It encompasses many different sectors, from racing, driving and endurance to dressage, horse trials and show jumping. These areas are supported by a large ancillary industry and leisure market which provides extensive career opportunities.

## Myexperience

### From student to advisor

Myerscough opened my eyes to the opportunities for working with the animals I love – and put me on the fast track to a career in the racing industry. First rate facilities helped my research into equine therapy and physiology no end. Now I'm Head of Operations at the Horserace Betting Levy Board (HBLB) in a role that covers everything from managing the distribution of Levy Board funds (such as prize money), analysing racing and betting trends to media relations and government liaisons. With a first class BSc, a Masters degree and a graduate training scheme with the British Horseracing Authority, my career has really taken off!

*Tasha Power*

# On course for an equestrian career



The equine department at Myerscough College has excellent resources. A busy equestrian centre runs affiliated and unaffiliated events as well as being a training and examination centre for British Horse Society qualifications stage 1, 2, and 3, 4, PTT and ITT.

Myerscough is well known as one of the leading equine colleges in Britain. The facilities and expert knowledge of the tutors provide an ideal learning environment. The lecturing staff are active in equine research, regularly presenting their studies at international research conferences.

### Career Opportunities

Employment opportunities are diverse and include areas such as therapy, nutrition, stud management and consultancy. All Higher Education qualifications provide students with excellent academic and transferable skills. Recent Equine graduates have gone on to great success including employment as a Journalist, Sales Representative, Competition Yard Manager, Equine Retail Manager, Stud Assistant as well as lecturers and instructors at colleges and universities and equine business entrepreneurs.

### Work placements and enrichment activities

The Foundation Degrees are designed for students wanting a more vocational career and for this reason the Work Skills Development and Work Project modules are an integral part of these courses. The College has strong links with equine establishments nationwide and this allows students to gain as much practical experience as possible.

It is not compulsory for students on the BSc (Hons) or BA (Hons) degrees to carry out a work placement but it is strongly recommended that they gain as much work experience as possible to enhance future career prospects.

The courses are modular and specific modules incorporate trips and project/field work. Recent trips have been to Badminton Horse Trials (approx. cost £200), the Thoroughbred Rehabilitation Centre (cost £10), International riders' yards, Newmarket (approx. £200) and Ireland (approx. £250).

## Resources

- International Arena (85m x 30m) with a heated gallery for 400 spectators
- Indoor school (66m x 20m) with a viewing gallery for 200 spectators
- 2 outdoor schools (20m x 60m and 45m x 65m)
- Extensive show jumps
- 50+ quality horses on site, of various sizes, breeds and standards, stabled in three professional and friendly yards
- Specialist laboratories, weighbridge and a well-stocked tack shop
- Cross country fences and horse walker
- Heart rate monitors and rein tension gauges
- Two dimensional motion analysis software with high speed video camera
- Equissage equine specialist motorised massage sets and Zamar therapy
- Coldwater therapy spa and solarium



British Dressage Premier League Competition at Myerscough International Arena. Picture © Ken Etteridge

# Equine Studies



## Foundation Degree (FdA) Equestrian Practice and Technology

The Foundation Degree programme has been designed for students wishing to undertake a Higher Education course with a vocational base, providing a balance of academic lectures and practical instruction from a well-qualified lecturing team.

The course enables students to understand and apply principles of equitation and business to the management and development of the horse and the equine industry. The degree provides an essential understanding of horse and rider development and managing the wide range of equine facilities.

First Year modules include Equine Training (a range of training methods and behaviour modification techniques), Youngstock Handling and Management, Yard Management and Development, Business Management (human resources, leadership, marketing and finance) and Competitive Equitation.

A range of subjects are covered during the second year of the degree programme. These include Special Events and Facility Management, Developing the Horse and Rider, Performance Analysis and Development, Managing the Equine Athlete and a choice of either Business and Entrepreneurship or Research Methods.

To develop your practical skills, a range of work experience opportunities, field trips and work-based projects are included, along with regular yard duties. These enable you to relate your academic studies to current issues in the equine industry.

In addition to obtaining the main qualification, students are encouraged to enter for the appropriate level of British Horse Society qualification – from Stage 1 to Preliminary Teaching Test.

### Course Details

**Duration**  
2 years full-time.

**UCAS Code**  
D424.

**Entry Requirements**  
A minimum of 48 UCAS tariff points. See pages 18-19 for further information.

**Assessment**  
Written assignments such as report writing, portfolios and time constrained essays, case studies,

oral presentations, practical assessments and examinations.

**Progression**  
Final year of the BA (Hons) Equestrian Management and Development.

**Career Opportunities**  
Yard Manager, Performance Analyst, Equine Events Manager, Leisure Facilities Manager, Equine Marketing, Equine Insurance or Trainer.

# Equine Studies



## BA (Hons) Equestrian Management and Development

This three-year Honours degree programme provides students with an excellent opportunity to understand and apply a range of equitation and business principles to the management and development of the horse, rider and the wider equestrian industry.

The course provides a management focused equestrian programme and has been designed to develop awareness and ability in equine management, giving students the skills and confidence necessary to manage others in the industry. An ethos of career planning and international development runs through the curriculum, in order to develop employability and prepare students for successful careers in the UK or overseas.

First Year modules include Equine Training (a range of training methods and behaviour modification techniques), Horse Handling (an ability to handle a variety of horses in different scenarios), Yard Management and Development, Business Management (human resources, leadership, marketing and finance), Data Handling, Study Skills and Personal Development. An option module is also included, enabling you (subject to timetabling) to focus on an area of particular interest. Examples might include Competitive Equitation, Work Skills Development or Equine Rehabilitation.

The second year of the programme covers Equestrian Psychology, the International Equine Industry, Business and Entrepreneurship, Website Design and Development, Research Methods and an additional option module.

Year three of the course includes a comprehensive industry related research project and the development of the equine training, performance and globalisation themes studied in years one and two. A specific focus is also given to equine commercial management.

In addition to obtaining the main qualification, students are encouraged to enter for the appropriate level of British Horse Society qualification – from Stage 1 to Preliminary Teaching Test.

### Course Details

**Duration**  
3 years full-time.

**UCAS Code**  
4V71.

**Entry Requirements**  
A minimum of 56 UCAS tariff points. See pages 18-19 for further information.

**Assessment**  
Assignments, Examinations, Presentations, Practical delivered sessions.

**Progression**  
Masters Degree in a related subject.

**Career Opportunities**  
Extensive positions at managerial level within the Equine Industry. Equine Journalism, Insurance, Consultancy and Business Management.

# Equine Studies



## Foundation Degree (FdSc) Equine Science in Industry

The Foundation Degree programme has been designed for students wishing to undertake a Higher Education course with a vocational base, providing a balance of academic lectures and practical instruction from a well-qualified lecturing team.

The study of physiology, breeding, health, behaviour and welfare is an essential part of understanding the working or performance horse. Students will be equipped with the underpinning knowledge and skills to enter careers within the breeding, welfare, behaviour and education industries amongst others.

The programme structure is designed to allow students with initially varied equestrian skills to pursue a programme of study which fits their experience to date. In addition to obtaining the main qualification, students are encouraged to enter for the appropriate level of British Horse Society qualification – from Stage 1 to Preliminary Teaching Test.

First Year modules include Equine Biology (the principles underlying equine production and performance), Youngstock Handling and Management, Yard Management and Development, Equine Behaviour and Equine Rehabilitation.

A range of subjects are covered during the second year of the degree programme. These include Breeding and Stud Management, Ethics of the Horse Industry, Equine Nutrition, Management of the Equine Athlete and a choice of either Business and Entrepreneurship or Research Methods.

To develop your practical skills, a range of work experience opportunities, field trips and work-based projects are included, along with regular yard duties. These enable you to relate your academic studies to current issues in the equine industry.

### Course Details

**Duration**  
2 years full-time.

**UCAS Code**  
D426.

**Entry Requirements**  
A minimum of 48 UCAS tariff points. See pages 18-19 for more information.

**Assessment**  
Assignments, report writing, case studies, oral presentations, practical work, fieldwork and final examinations.

**Progression**  
To the final year of BSc (Hons) Equine Science.

**Career Opportunities**  
Bloodstock Agents, Independent Business Owner, Equine Insurance, Equine Journalism, Stud Manager, Trainer, Equine Therapy and Research Technicians.



Myerscough students competing in the BUCS (British Universities & Colleges Sport) Equestrian Championship.



My-Tack equestrian shop

# Equine Studies

## BSc (Hons) Equine Science

This three-year Honours degree programme provides students with an excellent opportunity to understand and apply a range of scientific principles to the management and development of the horse, rider and the wider equestrian industry.

The course provides an academic, technological and research focused equestrian programme and has been designed to provide students with the skills and confidence necessary to manage others in the industry. An ethos of career planning and international development runs through the curriculum, in order to develop employability and prepare students for successful careers in the UK or overseas. These include sectors such as research and development, welfare, breeding, nutrition and equine therapy.

First Year modules include Equine Biology (the principles underlying equine production and performance), Horse Handling (an ability to handle a variety of horses in different scenarios), Equine Health, Data Handling, Equine Therapy or Equine Behaviour and Study Skills and Personal Development. An option module is also included, enabling you (subject to timetabling) to focus on an area of particular interest. Examples might include Competitive Equitation, Yard Management and Development, Business Management (human resources, leadership, marketing and finance) or Work Skills Development.

The second year of the programme covers equine biomechanics (anatomy, movement, soundness and performance), equine nutrition, equine genetics and evolution, equine exercise physiology or ethics of the horse industry, research methods and an additional option module. Examples might include Stud Management, Business Planning or Developing the Horse and Rider.

Year three of the course includes a comprehensive industry related research project, a module entitled 'Professional Practice and Consultancy' and the development of the equine



science, performance and globalisation themes studied in years one and two. Students can also choose to focus on either equine reproduction or equine nutrition and select a further option module. Examples might include Livestock Technologies, Elite Equestrian Performance Strategies or Innovations in Equine Training.

In addition to obtaining the main qualification, students are encouraged to enter for the appropriate level of British Horse Society qualification – from Stage 1 to Preliminary Teaching Test.

Students who have successfully completed the Foundation Degree in Equine Science in Industry (or a similar Foundation Degree or HND programme at another institution) can often progress directly to the final year of the Degree Programme.

### Course Details

**Duration**  
3 years full-time.

**UCAS Code**  
D425.

**Entry Requirements**  
A minimum of 56 UCAS tariff points. See pages 18-19 for more information.

**Assessment**  
Written assignments such as report writing, critical reviews and case studies, oral presentations, practical work such as fieldwork,

laboratory write ups and final examinations.

**Progression**  
MSc Equine Science.

**Career Opportunities**  
Equine Research and Development, Nutrition, Marketing, Consultancy, Bloodstock Agents, Lecturer, Equine Journalism, Welfare Officer, Equine Rehabilitation, Equine Therapy, Research Technician.



# Equine Studies

## MSc Equine Science

The MSc Equine Science is designed to develop a systematic understanding and a critical awareness of the current issues at the forefront of equine science. This ground-breaking course will develop students' existing expertise, to provide a comprehensive portfolio of knowledge and skills required to inform and lead industry developments.

The MSc enhances students' understanding of the techniques applicable to research and scholarship in equine science as well as how to address complex issues. The course encourages debate and critical evaluation of industry practices and research whilst also reflecting on current issues in the equine industry.

The MSc programme covers Equestrian Sport, Culture and Society (theories and concepts to evaluate the role of the horse), Equitation Science (techniques, research and scholarship relating to the scientific study of the horse) and Comparative Exercise Physiology (reviewing research findings and methodologies in application to athletic animals).

Other modules cover Applied Techniques for Sustaining the Equine Resource (protocols for threat recognition and approaches to minimise risks), Current Issues and Innovation in the Equine Industry (solutions, techniques and approaches) and Research Methodology and Design (philosophies and process, advanced data organisation, presentation, dissemination and problem solving).

The final year dissertation is a triple module and allows students to design and conduct a substantial piece of independent, supervised research in the field of equine science.

### Course Details

**Duration**  
1 year full-time.  
3 years part-time.

**UCAS Code**  
Not required - please apply directly to the College via the Myerscough website.

**Entry Requirements**  
Successful completion of a relevant Honours Degree, with a minimum 2:2 classification or relevant professional qualifications and experience.

**Assessment**  
Assignments, dissertation, essays, presentations and reports.

**Progression**  
PhD.

**Career Opportunities**  
Equine Research and Development, Government Body Policy Maker, Nutrition, Consultancy, Bloodstock Agents, Lecturer, Equine Journalism, Welfare Officer, Equine Rehabilitation, Equine Therapy.





# Farriery

Farriery, or the shoeing of horses and similar animals, is an ancient craft. It is defined in the Farriers (Registration) Act 1975 as 'any work in connection with the preparation or treatment of the foot of a horse for the immediate reception of a shoe thereon, the fitting by nailing or otherwise of a shoe to the foot or the finishing off of such work to the foot'. Farriery is hard work, often dealing with animals that may be fractious and in distress.

A farrier is a skilled craftsman with a sound knowledge of both the theory and practice of the craft, capable of shoeing all types of feet, whether normal or defective, making shoes to suit all types of animal and working conditions, and of devising corrective measures to compensate for faulty limb action. Modern farriers must have knowledge of the anatomy of the horses' feet and legs, be able to work alongside veterinary surgeons, manage and handle horses, understand and meet the needs of clients and successfully run their own business.



## An ancient craft, trimmed, balanced and nailed

The degree programme at Myerscough is delivered by an experienced team of Fellows (FWCF) including a Professor of Hoof, all of whom are active participants within the profession.

Our Higher Education Diploma and Honours Degree courses are designed specifically for qualified working farriers. However, should you be interested in starting a career as an Apprentice Farrier (and carrying out your training at Myerscough College), an informative guide is available for download from Farriers Registration Council at [www.farrier-reg.gov.uk](http://www.farrier-reg.gov.uk) Students can study at Myerscough for the Forgework Certificate which is a pre-requisite for entry to an apprenticeship.



### Resources

- Three farriery workshops, each with a floor area of approximately 200m<sup>2</sup>
- 32 coke forges and associated anvils, leg vices and hand tools
- Mobile forge unit to accommodate 4 apprentices
- A full range of additional equipment for blacksmithing, farriery and metalworking
- Omera Mechanical Flat Bar Shearing Machine
- SM40 Power Hammer for larger forging work
- Tiered seating demonstration area
- A full range of equine facilities
- Access to young stock for trimming
- 50+ horses of various sizes, breeds and standards



### Myexperience

#### From student to farrier:

Time honoured certainly; out of date, never! Horses are my passion. The old skills survive, I'm glad to say, but modern practice allows us to be more effective in identifying and treating health problems.

I've got my own successful corrective farriery business in Staffordshire and I really enjoyed the scientific research that I completed as part of my degree course dissertation.

The tutors were hugely supportive and I also enjoyed learning the skills required to hand-forged complicated corrective horse shoes. Ask about farriery courses at Myerscough.

*Mara Jerram*





# Farriery

## Diploma of Higher Education Farriery

This innovative new part-time Diploma is accessible, flexible, progressive and professionally recordable. It is designed for qualified working farriers who want to enhance their qualifications and knowledge. It is expected that students enrolling on the course will have gained the Diploma of the Worshipful Company of Farriers and hold current registration under the Farrier's Registration Act 1975 with a year's post-qualification experience.

The Diploma encompasses all aspects of modern advanced farriery and equine hoof care combining professional farriery related skills with academic knowledge and research.

The course is studied part-time using the College's excellent computer-based blended learning package, Canvas. The nature of the course, having both a theoretical and clinical perspective, necessitates that students are employed (or have access to a suitable farriery placement) for at least 12 weeks annually for the duration of the course. Students attend College for just three study weekends each year (November, February and April) and an introductory three day study session in early September.

The course covers the following modules:

- Applied Anatomy and Physiology
- Modern Approaches to Farriery
- Pathophysiology of the Equine Limb
- Lameness Assessment and Diagnostic Imaging of the Equine Lower Limb
- Farriery Clinical Case Studies
- Farriery Protocols
- IT and Research Skills

An additional module will be available for students wanting to further improve their traditional skills. This will benefit students wanting to take Worshipful Company Practical Examinations.

- Shoeing for Conformation Defects, Surgical and Pathological Conditions

### Course Details

**Duration**  
2 years part-time blended study, with College attendance for additional study sessions.

**UCAS Code**  
Not applicable – please apply direct to the College. Application forms are available from the website or from Course Enquiries on 0800 652 5592.

**Entry Requirements**  
As described in the first paragraph of the course detail (above).

**Assessment**  
Assignments, practical work and examinations.

**Progression**  
BSc (Hons) Farriery.

**Career Opportunities**  
Students from this course will be equipped to apply to become an Accredited Training Farrier (ATF). The course will also facilitate the attainment of the Associate qualification from the Worshipful Company of Farriers, by way of a separate examination.

# Farriery

## BSc (Hons) Farriery

This part-time degree is an innovative programme focusing on further advancement in professional farriery practice that will fill a worldwide niche in farriery education provision.

The degree is designed as a progression route for those farriers who have completed the Diploma of Higher Education in Farriery (or the former Foundation Degree Farriery), or are Associates of the Worshipful Company of Farriers. Applicants for the degree programme who hold Associate status will be expected to undertake a bespoke supplementary bridging module looking at Essential Study, IT and Research Skills.

The course is studied part-time using the College's excellent computer-based blended learning package, Canvas. The nature of the course, having both a theoretical and clinical perspective, necessitates that students are employed (or have access to a suitable farriery placement) for at least 12 weeks annually for the duration of the course. Students attend College for just four study days each year (September, November, January and March).

Modules on the degree programme include:

- Research and Statistical Analysis
- Biomechanics: Static and Dynamic Analysis
- Equine Functional Anatomy
- Dissertation – Farriery
- Professional Development Skills

### Course Details

**Duration**  
2 years part-time blended study, with College attendance for additional study sessions.

**UCAS Code**  
Not applicable – please apply direct to the College. Application forms are available from the website or from Course Enquiries on 0800 652 5592.

**Entry Requirements**  
Successful completion of the Diploma of Higher Education in Farriery or Associate status of the Worshipful Company of Farriers.

**Assessment**  
Assignments, practical work and examinations.

**Progression**  
Fellowship of the Worshipful Company of Farriers. Students completing the degree programme will also have the opportunity to progress to taught post-graduate degrees or post-graduate degrees by research.

**Career Opportunities**  
Successful students will be equipped to become examiners and verifiers within the industry.

Myerscough staff and students win two Gold Medals at Southport Flower Show, 2016.



# A helping hand for green fingers



## Horticulture

With a strong public interest in food security and environmental sustainability, horticultural management is becoming a rapid growth area. Employment opportunities exist in commercial plant production, garden centre management, horticulture therapy and with public and private estates.

According to the Royal Horticultural Society, the horticulture industry is the largest employer in the UK. The number of garden centres continues to increase and the public demand for attractive horticultural landscapes remains strong. This means that plant growers, suppliers and managers are constantly looking for ways to improve their businesses.

Horticulture degree courses at Myerscough College integrate horticultural science, technology and plant knowledge with the necessary business skills required for work at management level.

As the industry is constantly developing, we work closely with employers and organisations to ensure that our courses deliver the expertise required to remain at the forefront of the industry.

Qualify with a degree in horticulture from Myerscough and you could be part of this thriving horticultural industry, enjoying a diverse and rewarding career.



Christine Walkden, Plantswoman and Horticulturalist is an Honorary Fellow of Myerscough College

### Career Opportunities

Many varied opportunities exist. Positions include public and private gardens, horticulture production in specialist nurseries and garden centres, amenity horticulture management and horticulture management for local authorities and parks. Myerscough horticulture graduates have progressed into a wide range of career paths, and further study, including:

- Head Gardener in South Downs private estate
- College and University lecturing positions
- MSc/PhD in Biotechnology and Botany at Warwick University
- Postgraduate studies at Horticultural Research International
- Horticultural Retail Manager at B&Q
- Self-employed nursery retail business
- Self-employed garden design consultant
- Director of an environmental consultancy
- Manager in horticultural supply industries for fertilisers, pesticides and horticultural sundries
- Parks and Recreation Officer, Barrow-in-Furness
- Country Parks Manager in Wigan



### Work Experience

The Foundation Degree and Honours Degree programmes offer the flexibility for students to gain additional work experience at the end of their degree. The College has excellent links with employers and many students have gained a range of prestigious opportunities. This enables students to gain experience in a real working environment, as well as increasing their employment prospects. Examples include RHS Wisley, Royal Saville Gardens at Windsor Park, Oxford University Botanical Gardens, Birmingham Botanical Gardens, Ness Botanic Gardens, Holker Hall, Southport Botanical Gardens, Tresco Gardens and various garden centres across the country.

### Resources

- Extensive plant collection including arboretum (deciduous tree collection) and pinetum (coniferous tree collection) and demonstration gardens
- Five hectares of ornamental features and landscaped grounds
- A dedicated nursery stock production unit
- A range of display glasshouses featuring four different environmental regimes
- A range of glasshouses for crop production
- Commercial plant centre at our Preston campus
- Micropropagation facilities and a fully automated growing room
- 30 hectares of woodland
- Computer-aided design facility running a range of photo manipulation and CAD systems including "Vector Works", "Photoshop" and "MS-Project" packages

### Myexperience

#### From student to gardener:

There's so much interest in horticulture these days that the career choices are almost as varied as the plants, shrubs and trees we work with. TV gardeners may get all the attention but it's plant biotechnology that fascinates me. Genetic studies are having a huge impact on health and environmental issues and I want to be part of that innovation. Ask about Horticulture Studies at Myerscough.

*Nicola McKee*

# Horticulture

## Foundation Degree (FdSc) Horticulture

Modern horticulture combines knowledge of plant and soil science, utilisation of innovative new technologies, business acumen and entrepreneurship. It offers a stimulating and rewarding career path for anyone with an interest in plants and the environment. The Foundation Degree explores the scientific basis of plant cultivation and related technologies, the horticultural business environment and provides an understanding of the significance of horticulture to society.

The course is ideal for anyone new to horticulture, who wants to work in this challenging and exciting industry or for those currently working in horticulture who wants to expand their knowledge or progress towards management positions. Alternatively, the course offers a route into scientific research, as it integrates both underlying scientific knowledge and technical skills – applied within an industry and business context.

In year one you will learn the fundamentals of plant biology, plant identification and soil science, as well investigating plant propagation, production and plant cell biology. Additional modules cover site surveying and interpretation – developing draughting skills for the production of scale plans – and a work experience module to develop practical and technical skills.

In the second year of the programme there are core modules that cover greenspace management (amenity planting schemes, management plans and maintenance schedules for a range of landscape situations), environmental plant physiology and horticultural pests, diseases and weeds.

A choice of option modules enables you to develop your skills in research methods and data analysis, crop physiology and production or in business and entrepreneurship (covering business planning, marketing, finance and the importance of communication skills, teamwork and leadership).



The acquisition of practical skills and experience is an integral part of the Foundation Degree course, with dedicated modules covering work skills development and work-related projects, where students work with their project supervisor to develop and manage the project as well as reporting on the outcomes.

The College's short course department runs a range of additional training courses, ideal for students wishing to gain supplementary qualifications to kick-start their career in horticulture. These include the use of sprayers, chainsaws and tractor driving.

Successful completion of the Foundation Degree provides access to the final year of the Honours Degree programme.

### Course Details

**Duration**  
2 years full-time.

**UCAS Code**  
D451.

**Entry Requirements**  
A minimum of 48 UCAS tariff points. See pages 18-19 for more information.

**Assessment**  
Assignments, report writing, case studies, presentations, written examinations, practical tests, laboratory/practical reports, professional portfolio.

**Progression**  
One-year BSc (Hons) Horticulture Science and Management top-up.

**Career Opportunities**  
Local Authority Grounds Maintenance Officer, Commercial Nursery Manager, Garden Design Consultant, Garden Centre Manager, Botanical or Private Gardens Work, Local Authority Parks Manager, Self employment or lecturing.



# Horticulture

## BSc (Hons) top-up Horticulture Science and Management

The Honours Degree top-up programme has been designed as an ideal progression route for students who have completed a Foundation Degree or Higher National Diploma in Horticulture (or a related subject).

It focuses on the latest scientific research and technical developments in the 'green space' industries, whilst encouraging independent learning. This enables students to investigate novel approaches to plant cultivation which have potential to allow plant production to be achieved more sustainably or the use of green infrastructure to improve the urban environment.

Employability and consultancy skills are a key theme of the programme, with all students undertaking a module on Professional Practice and Consultancy. Additional modules cover Contemporary Issues in International Horticulture, Applied Plant Science and Biotechnology (laboratory analysis, plant breeding, tissue cultures and molecular techniques) and Horticultural Enterprise Management (identifying business opportunities and developing business plans).

A choice of option modules enables you to develop your skills in either sustainable crop production (focusing on energy and water use, plant nutrition and crop protection) or greenspace policy and planning.

Students also conduct their own research project and present their findings. This is an integral and exciting part of the course, which provides the opportunity to undertake a significant piece



of research and develop real expertise in a specific area of horticulture and the 'green space' industries. Myerscough College has an expanding horticulture research programme that links closely with the commercial sector and other academic institutions.

An annual conference showcases research carried out at the College and provides the opportunity for guest speakers from other institutions to present their latest findings in horticultural science. This has included the use of rhizobacteria (soil bacteria) to increase water-use efficiency in commercial crops and the incorporation of organic matter in the soil at a range of depths to benefit plant growth.

### Course Details

**Duration**  
1 year full-time.

**UCAS Code**  
D450.

**Entry Requirements**  
Successful completion of an HND or Foundation Degree in Horticulture or a related subject.

**Assessment**  
Assignments, report writing, case studies, presentations, written examinations, laboratory/practical reports, research dissertation.

**Progression**  
Masters or Doctorate programmes.

**Career Opportunities**  
Botanical Gardens Curator, Plant Breeding Programmes, Local Authority Grounds Maintenance or Parks Officer, Commercial Nursery Manager, Garden Design Consultancy, Garden Centre Manager, Landscape Design Consultancy, Horticulture Research or Lecturing.



The floral design industry now reaches far beyond the traditional confines of high street retailing. Employment opportunities continue to grow in this country and abroad, as the sector diversifies and expands. The industry now employs more than 25,000 people and the fresh cut flower market alone is worth more than £1.5 billion to the UK economy.

## Myexperience

### From student to florist:

I chose Myerscough because the Foundation Degree includes so many important subjects – everything from historical designs and advanced floral techniques to business planning and practical work experience. I've been inspired by the best designers, at workshops with master florists like Max van de Sluis. Now I want to inspire others, with designs that evoke a real sense of occasion. I launched my business last summer and now have a thriving shop and a flourishing career."

Visit us at [www.fletcherandfoley.co.uk](http://www.fletcherandfoley.co.uk)

*Joanne Fletcher*



# Let your imagination run wild



Myerscough celebrated its Floral Design Silver Jubilee in 2012, having been at the forefront of floristry teaching for more than 25 years. It is regarded as one of the leading colleges in the country for floristry provision, winning the prestigious BFA Training Provider of the Year award. We have some of the most advanced design studios in the country, having invested more than £250,000.

Our courses are highly creative, taught by our well qualified and experienced floristry team. They equip students with the range of academic knowledge, design theory and practical skills required for successful careers in the industry.

## Resources

- Five floral design studios equipped with stainless steel custom-made workbenches, flower food dosing units, sinks, display units, photography areas to aid portfolio design
- Experienced professional floristry tutors (ICSF and NDSF holders)
- Walk in cold stores
- Dedicated foliage borders

- Comprehensive range of teaching equipment and accessories
- Exhibition and gallery space
- Design and craft workshop facilities

Follow us at:  **MyFloristry**

### Enrichment Activities

Students are actively encouraged to attend and take part in events and competitions during their courses. In recent years students have successfully competed at the RHS Chelsea and RHS Tatton Flower Shows as well as the World Skills competition. As part of the programme there are often several visits which students can attend to complement and underpin the development of their knowledge of British and international design. These have included:

- BFA Fleurex • Holland study tour
- RHS Chelsea Flower Show
- Southport Flower Show • Harrogate Flower Show
- RHS Tatton Park Flower Show

### Career Opportunities

As well as managing florist shops, many students have progressed to become freelance florists, to open their own shops or work internationally. Other employment areas include corporate events floristry, working for hotels and blue-chip clients, window dressing and visualising, interior design, and lecturing or demonstrating to name just a few.



# Floristry and Floral Design



Foundation Degree (FdA)  
Professional Floristry and Floral Design

The Foundation Degree in Professional Floristry and Floral Design is designed for students who want to develop and establish their own creative flair, whilst also acquiring background knowledge of business procedures and marketing in the floral design industry. The course is a step forward for the floral designer, exploring commercial, period and experimental contemporary designs. It also incorporates the latest trends in manipulation of fresh plant material and experimental designs using modern decorative accessories.

Introductory modules cover workroom management (the practices involved in the preparation, care, conditioning and storage of plant material and floristry products), along with the principles and elements of design. There is also an intensive focus on commercial skills, in terms of developing a portfolio of design styles that cover a wide range of important pieces.

Additional modules cover wedding designs (period, modern and experimental), event/project management, sympathy designs, cultural designs, historical designs, advanced floral techniques (exploring a range of innovative design techniques), international design trends, contemporary event floral design (including large scale installations) and a comprehensive overview of business planning, research skills and business management.

An integral part of the course is undertaking relevant industry work experience. This provides students with a valuable insight into the floristry industry and the opportunity to develop practical and technical skills, especially at the peak periods of Christmas, Valentine's Day and Mother's Day. It also offers a great opportunity to enhance your CV and improve your employment prospects upon graduation.

Additional customer care and sales skills are developed through on-campus commercial activities, such as the popular weekly 'pop-up' shop.

This course is also available for part-time online study. See page 24.

## Course Details

**Duration**  
2 years full-time.  
3 years part-time online.

**UCAS Code**  
W991.

**Entry Requirements**  
A minimum of 48 UCAS tariff points. See pages 18-19 for more information.

**Assessment**  
Class presentations, practical exercises, final examination, end of year exhibition, assignments,

case studies, portfolio design, report writing.

**Progression**  
One-year BA (Hons) Professional Floristry and Floral Design top-up.

**Career Opportunities**  
Designer/Manager in a Florist Shop, Freelance Floral Designer, Special Event Co-ordinator, Teaching and Demonstrating, Buyer/designer for multinational stores, international hotel chains.

# Floristry and Floral Design



BA (Hons) top-up  
Professional Floristry and Floral Design

This course has been developed especially for students who have completed the Foundation Degree in Professional

Floristry and Floral Design, or an equivalent HND programme, and wish to develop their floral and creative design skills within a degree programme.

The course will enhance your skills in floral art and design whilst encouraging further individual creative development.

Two dedicated Floral Art modules will provide the advanced level teaching to enable you to expand the full potential of your own individual designs, as you experiment with a range of ambitious international cutting edge design trends and styles – culminating in a showpiece presentation.

Other specialist modules cover professional skills in floristry enterprise and consultancy, strategic business analysis and personal planning/career development (including marketing and promotional techniques, design ownership, copyright, professional ethics and designer/client relationships).

The honours dissertation allows you to research and further develop your knowledge by investigating a specialist area of personal interest. You will publish a book showing your personal design philosophy and address a significant current issue that is facing the floristry and floral industries at a strategic level.

## Course Details

**Duration**  
1 year full-time.  
2 years part-time.

**UCAS Code**  
W990.  
Not required for part-time applications which can be made directly to the College.

**Entry Requirements**  
Successful completion of an HND or Foundation Degree in Floral Design.

**Assessment**  
Class presentations, practical exercises,

end of year exhibition, assignments, case studies, portfolio design, report writing.

**Progression**  
Postgraduate Study in Arts, Ceramics, Design or Education.

**Career Opportunities**  
Floral Art Exhibitor, Self-employed Floral Designer, Special Event Co-ordinator, Author, Purchaser/Designer, Business Development Specialist, Lecturer/Demonstrator.

## Floral Design in the News

### A great year for Floristry

It's been another great year for our floral design students, combining high academic achievement with wonderful enrichment opportunities. Recently these included:

Myerscough College floristry students received a once in a lifetime opportunity to showcase their skills to royalty after being asked to prepare flowers for the Queen's recent visit.

The students created a number of floral designs including buttonholes, table arrangements and a large scale screen of flowers, which were used to decorate the reception venue at the College's Lee Farm.

Her Majesty's visit to Lee Farm formed a private last leg of her visit to Lancashire, where earlier in the day she met staff and students at Myerscough's Lodge Farm and Livery Yard. At Lee Farm the Queen met with around a hundred tenant farmers from the Duchy of Lancaster's estate.

Meanwhile, Myerscough College's floristry department has been named the best in the country at the industry's annual awards ceremony. The College was named as Training Provider of the Year at the British Florist Association (BFA) FleurEx Awards, in a ceremony that recognises and celebrates the best that the industry has to offer. In addition, Myerscough tutor, Susanna Brandon, was shortlisted for Floristry Tutor of the Year at the Gala Dinner, held at the Chesford Grange Hotel in Kenilworth.

In recent years, Myerscough has won several BFA awards as well as being nominated on other occasions.

The nominations come on the back of another successful academic year for the floristry department. As well as several BFA nominations, they included the staging of several major exhibitions showcasing the work of Myerscough College floristry students which were all a huge success, and a student who was named amongst the best talent in the UK after landing a bronze medal in the national final of the WorldSkills event.



Masterclass demonstration with Marie-Françoise Déprez





Myerscough College provides an excellent opportunity for students to gain degree qualifications in Sports Coaching, Sport and Exercise Science and Health and Personal Training.

Not only will you learn practical coaching techniques but also the necessary knowledge and skills in related subjects such as business management and organising special events.

The courses are designed as an ideal starting point for the development of 21st century sports coaches, sports scientists, managers and sports professionals – in an industry which employs more than 621,000 people in the UK.

## Myexperience

### From student to referral officer:

“Working within a gym environment means that I have to know the best ways to motivate different types of people and find an exercise regime that suits them.

This involves keeping up to speed with all the latest exercise and training practices and implementing them in to regular fitness workouts. Studying Health and Personal Training helped me develop my skills and discover further how the body reacts to gym work. I am now looking to use all the knowledge I have picked up from the College and my working experiences to become a referral officer for people with cardiac problems.”

*Steve Yardley*



# Keeping you fit for any challenge

The benefits of sport and physical activity to individuals and communities are universally known. Sports participation has also been recognised as an invaluable tool for tackling many of the current issues in society, such as healthy living and social inclusion – with coaching education being critical to support this.

## Resources

- £1.8 million sports centre
- 20 hectares of sports grounds
- State-of-the-art all weather 3G pitch and new changing facilities
- Fully qualified sports coaches and fitness instructors available for advice and personal development
- Aerobics and dance studio
- Regular industry visits
- Modern 100m<sup>2</sup> gymnasium equipped with state-of-the-art “Startrac” cardio-vascular and “Nautilus” resistance equipment
- Sports performance and assessment laboratory
- Multi-purpose sports hall



The employment potential is endless and future career prospects are excellent, especially since the government recently announced its ‘big society’ agenda to develop our sporting heritage, enhance competitive sport and develop community sports participation.

The College works closely with the Lancashire Sport Partnership. Their goal is to increase participation in sport throughout the county, by developing and supporting sports coaches, liaising with junior sports clubs, coordinating the popular Lancashire Youth Games and building a legacy beyond the London 2012 and Rio 2016 Olympics. This opens the door to further sports such as archery, athletics, badminton, boxing, cycling, tennis, gymnastics, hockey, martial arts, outdoor pursuits, swimming and watersports, in addition to the established sports at College such as football, rugby, golf, basketball, netball and cricket.

# Sports Coaching



Foundation Degree (FdA)  
Sports Coaching

This course is designed to provide the skills, knowledge and practical training required for a career in the sports industry, whether from a playing, coaching or business perspective.

The Foundation Degree provides a comprehensive overview of sports studies. It covers a range of subjects including sports coaching, sports development, sports event management and leadership and volunteering.

The emphasis throughout the Foundation Degree is on the development of a range of professional and vocational skills. Modules are selected to ensure that students will develop the essential knowledge and skills to work in their chosen area of sport. These include Club and Volunteer Development, Fundamentals of Coaching, Coaching Process and Coaching Multi Sports. Additional modules include Sports Development, Performance Analysis, Essentials of Training and Conditioning, Talent Identification (including performance pathways) and Sports Events. A research project and work placement is also undertaken. The course is constructed around the modern coach and encourages students to develop innovative coaching ideas, underpinned by traditional values.

The course also provides students with a variety of coaching opportunities with local youngsters who comprise Myerscough's successful junior and youth teams. There are many other coaching opportunities locally. Students also benefit from the opportunity to undertake additional coaching qualifications and Minimum Operating Standard courses (MOS).

## Course Details

**Duration**  
2 years full-time.

**UCAS Code**  
S4C7.

**Entry Requirements**  
A minimum of 48 UCAS tariff points. See pages 18-19 for more information.

**Assessment**  
Assignments, report writing, case studies, presentations, final examinations.

**Progression**  
BA (Hons) Sports Coaching and Development or

BA (Hons) Sports Studies or  
BA (Hons) Exercise and  
Fitness Management  
one-year top-up.

**Career Opportunities**  
The course provides students with numerous opportunities to gain vital industry experience. Students will be able to forge careers in Sports Coaching, Sports Marketing, Sports Analysis, Sports Development, Fitness, Sports Management, PE Teacher (once completed Degree and PGCE).

# Health and Personal Training



Foundation Degree (FdA)  
Health and Personal Training

This innovative course has been developed for those students who either want to work as fitness instructors, exercise leaders and personal trainers or who want to kick-start their careers in leisure management or health club management. The College has worked closely with staff from the exercise and fitness sectors to ensure that the course provides the range of skills required by the industry. The degree programme is now REPS accredited (Register of Exercise Professionals) and students have the opportunity to achieve Level 2 and Level 3 REPS on completion of the Foundation Degree.

A personal trainer needs to have excellent personal and motivational skills as well as a comprehensive knowledge of industry practices. Core aspects of health and fitness management, leadership training, customer care and business marketing are all included. Additional modules cover exercise sciences (human anatomy, cardiovascular and respiratory systems), personal training techniques, gym-oriented exercise, fitness evaluation, nutrition and weight management, lifestyle assessment, exercise prescription and rehabilitation with a range of client groups. Students also undertake their own research project and gain additional skills during their work placement module.

During the course students will be provided with the opportunity to complete various additional short course awards relating to their study. Examples include First Aid at Work, Spinning, Kettlebell Instructor and Health and Safety (MOS) certificates.

## Course Details

**Duration**  
2 years full-time.

**UCAS Code**  
H2P5.

**Entry Requirements**  
A minimum of 48 UCAS tariff points. See pages 18-19 for more information.

**Assessment**  
Coursework, essays, practical assessments, portfolio work, reports, presentations, group work and end-of-module examinations.

**Progression**  
To the final year of BA/BSc (Hons) Degree courses in related subjects.

**Career Opportunities**  
Graduates of the course will be suited to pursue careers within the exercise and fitness industry. The course will prepare students to enter the area of personal training and exercise referral.

# Sport and Exercise Science



Foundation Degree (FdSc)  
Sport and Exercise Science

This exciting course provides a comprehensive academic and practical knowledge of sports science and its relevance to the sports industry. The course incorporates both management and practical learning aspects within the curriculum, to enhance your employment prospects.

The modules studied in the first year introduce students to a range of principles relating to sport and exercise psychology, physiology and biomechanics – focusing on their importance to sports participation and performance including mechanical, notational and technological elements.

Additional modules cover fitness testing and exercise prescription, the development of personalised training routines and the scientific principles, concepts and theories of resistance training and conditioning.

Second year modules include Research Methods for Sport and Exercise Sciences, Sport and Exercise Nutrition (methods of assessing nutrition, activity and energy requirements to enhance performance), Sports Science Support, Sport and Exercise Physiology and Measurement Techniques in Sports and Exercise Science.

The scientific 'health' and 'lifestyle' elements of the degree programme are expanded upon in the Health, Exercise and Wellness module. This empowers students to explore the impact of healthy living on the community and the financial burden of conditions such as obesity and cardiac illnesses.

The work placement module is also part of the second year of study, providing the opportunity to practically implement the knowledge gained during the course. This is then applied in a professional setting to improve understanding and enhance career prospects.

## Course Details

**Duration**  
2 years full-time.

**UCAS Code**  
S8SC.

**Entry Requirements**  
A minimum of 48 UCAS tariff points. See pages 18-19 for more information.

**Assessment**  
Examinations, written assignments, practically delivered sessions, presentations.

**Progression**  
To the final year of a BSc (Hons) Degree in Sport and Exercise Physiology or Sports Science.

**Career Opportunities**  
Fitness and Conditioning Coach, PE teacher (on completion of teaching qualification), Fitness Instructor, Personal Fitness Trainer, Sports Establishment Management, Sports Science Consultant.





# Batting for future success

The development of the action-packed 20/20 game has also played a huge part in the revival of English cricket with the shorter, more attacking form appealing to viewers who previously may have been less interested in the longer forms of the game. Once again the National Team have been at the forefront of this with some exhilarating performances. On top of the success of the national team, the county and limited over games have also received a boost recently, helped in no small part by the emergence of floodlit games, meaning that cricket can be enjoyed in the evenings by spectators who have had to work during the day.

By studying cricket at Myerscough College you are giving yourself an excellent opportunity to secure a dream job in the sport. Our dedicated teaching staff provide cricketers of all abilities, including beginners, with an excellent cricketer education, giving them the chance to fulfil their playing ambitions while also learning about the rules and technicalities of the game. There are also many exciting job prospects in cricket coaching thanks in part to the renewed interest in the sport at youth level. This means that the need for trained coaches is at a premium.

## Resources

Myerscough College is superbly equipped for the teaching of cricket, with many great resources at the Bilsborrow centre in Preston and the Emirates Old Trafford Cricket Centre. These include:

- Superbly maintained grass wickets
- Sports Hall with state-of-the-art cricket nets and bowling machines
- Fully qualified coaches with expert knowledge in the field
- Excellent links with the industry, particularly Lancashire County Cricket Club, Lancashire Cricket Board, Cumbria Cricket and Andrew Flintoff Cricket Academy



## Cricket Coaching

English cricket has never been more popular and is now attracting huge crowds who know they are going to be thrilled by cavalier batting, top-class bowling and athletic fielding.

All forms of the game are gaining popularity, especially 20/20 cricket, and larger than life stars such as Joe Root, Jos Buttler and Ben Stokes are raising public interest to phenomenal levels. This was proved during the 2015 Ashes Test Series where, in front of massive crowds of passionate fans, the England team managed to once again claim the Ashes by defeating Australia.

The superb efforts of the team combined with the excellent spirit they showed once again gripped the attention of the country and sent us into a cricketing frenzy.

### Myexperience

#### From student to cricket coach:

Myerscough has helped me to improve my coaching skills and define my own philosophy, whilst also gaining invaluable experience of coaching, event management and the work environment – through assignments and placements. This improved my personal skills, helped me gain in confidence and prepared me for a career in cricket.

I was always an average club cricketer, with a lot of passion for the game, but a career in cricket was still a dream until studying at Myerscough. Thanks to the lecturers and coaches (and a little hard work) I secured a job with the community department at Kent Cricket (my home county) after graduation. I thoroughly enjoy it, working with schools and clubs in my local area and helping to spread the power of cricket to the community – much more rewarding and satisfying than my previous employments.

A great experience and fantastic two years, I would recommend to everyone.

You can follow my vlog at [www.kentcommunitycricket.co.uk](http://www.kentcommunitycricket.co.uk)

*Matt Fagg*



Andrew Flintoff is an Honorary Fellow of Myerscough College



Myerscough cricket student Callum Flynn received the Disability Cricketer of the Year award at the England team presentations in 2016, having played a starring role in the England Physical Disabilities squad victory at the Bangladesh World Cup



## Cricket Coaching

### Foundation Degree (FdSc) Cricket Coaching

This Foundation Degree course has been designed to provide students with the practical skills, academic knowledge and coaching expertise that will ultimately enable them to gain employment as either cricket coaches or development officers, or to start a career in the wider sports industry.

It is an ideal choice for anybody who wants to develop their knowledge of cricket from a practical perspective. The course enjoys excellent links with the industry, most notably Lancashire Cricket Board. Students will gain vital work experience on and off the field, from training principles to video analysis systems. The course is based around the work of the modern cricket coach and encourages students to develop innovative modern ideas, underpinned by traditional values and practices.

The main elements of the course include a range of cricket coaching modules that cover the philosophies, styles and practices of coaching and the elements of skill acquisition, sports performance and delivery techniques. The coaching covers a broad spectrum of community, club and high-performance environments, including working within community coaching and district delivery. The course also includes elements of talent identification, sports development and event management through the delivery of a cricket tournament in association with the Lancashire Cricket Board. A module focusing on the science of cricket will help develop an awareness of the physiological, psychological and biomechanical factors linked to successful performance.

To succeed on this course it is not a pre-requisite to be a gifted and talented cricketer. However, it is important to have an enthusiasm for playing the game and a strong interest in coaching. Students will have the opportunity to undertake ECB and cricket specific coaching courses.

### Course Details

**Duration**  
2 years full-time.

**UCAS Code**  
XC1P.

**Entry Requirements**  
A minimum of 48 UCAS tariff points. See pages 18-19 for more information.

**Assessment**  
Examinations, written assignments, report writing, practically delivered sessions, presentations (group and individual).

**Progression**  
BA (Hons) Sports Coaching or BA (Hons) Sports Studies one-year top-up.

**Career Opportunities**  
Cricket Professional, Cricket Development Officer, Community Sport or Cricket Coach, Gym Instructor or employment in the wider sports industry – such as Sports Psychology, Sports Marketing, Journalism, Sports Analysis or Sports Development.



# Football Coaching

Myerscough has excellent links with football clubs across the North West to support the delivery of courses and increase student's employment prospects. Students receive football coaching every day as part of the Myerscough Football Development Centre. This operates just like a football academy; it encompasses academic lessons, coaching sessions, physio/rehabilitation clinics and competitive fixtures. It is supported by qualified tutors and FA/UEFA qualified coaches.

There are currently six former Myerscough students who are professionals in the English Football League, at clubs including Cardiff, Barnsley, Rochdale and Morecambe, with more playing at the top end of the non-league game. In addition, another student progressed from the College to a top flight club in Portugal.

On the field, Myerscough teams continue to enjoy success on an annual basis across a range of competitions, and over the last few years alone have been ECFA U19 North West Premier Champions, winners of the National Premier Cup and National Premier 'Champion of Champions' competition, as well as performing well in the Lancashire Floodlit League and the FA National Futsal Championship.

## Same game, different league



Rhys Turner signs for Morecambe FC



Myerscough College is a successful FA 'Charter Standard' College and a winner of the FA's prestigious Football Development College 'National Award' for its range of coaching programmes.

These achievements recognise our excellence in football education and confirm our standing as one of the top colleges for football development in England. We are committed to providing the best opportunities for young people who wish to develop their footballing talent alongside their academic studies.



Pre-match tactics on tour in Portugal

To date, a number of students have achieved success on the pitch by progressing into professional or semi-professional teams, further enhancing Myerscough's reputation. Many others have gained employment in coaching roles – such as the Bolton Wanderers International Academy – or in the business side of the football industry.



Match day action on tour in Portugal

## Resources

- New £2 million high performance sports centre
- State-of-the-art all weather 3G pitch and changing facilities
- Fully qualified sports coaches available for advice and personal development
- 20 hectares of sports grounds
- Modern gymnasium and additional strength and conditioning suite
- Unique partnership with Portuguese Liga club Associação Académica de Coimbra – OAF, with regular exchange visits between the two countries.
- Sports laboratory
- Multi-purpose sports hall
- Regular industry visits

## Myexperience

### From student to the Premier League:

I've been lucky enough to be a professional footballer for ten years. My amazing journey started when I was scouted during our triumphant English Colleges league season. My career then came alive at Huddersfield Town which lead to a £3 million move to the Premier League with Norwich City and most recently, on to Cardiff City. I've had a number of career highlights including the adrenalin rush of scoring a goal in a play off final at Wembley, where I got Man of the Match. I've also been capped by the Republic of Ireland U21s, and was delighted to become the first Myerscough student to feature in a full international, when I played in the qualifiers for the 2014 World Cup. I've earned nine caps so far and got my first international goal against the USA. It's every lad's dream really – and I'm living it!

*Anthony Pilkington*





# Football Coaching

## Foundation Degree (FdA) Football Coaching

This Foundation Degree course has been designed to provide students with the relevant practical skills, academic knowledge and coaching expertise to gain employment as football players, coaches or working in the wider football industry.

It is an ideal choice for anyone who wants to develop their knowledge of the football industry from a practical perspective. Driven by a 'team ethos', the course is closely linked with football clubs from 'grassroots' to premier ship. Students will gain vital work experience on and off the field, from training principles to video analysis systems, with placements at venues such as Preston North End's Academy and associated community programmes. The course is based around the work of the modern football coach and encourages students to develop innovative modern ideas, underpinned by traditional values and practices.

The main elements of the course include a range of football coaching modules that cover the philosophies, styles and practices of coaching and the elements of skill acquisition, sports performance and delivery techniques. Another module focuses on the three key areas of sport science utilised in football coaching; physiology, psychology and biomechanics.

The course also covers elements of football organisation, sports delivery, training and conditioning, talent identification, sports development and football event management – where students oversee the planning, organisation and funding of their own football tournament.

It should be noted that to succeed on this course it is not a pre-requisite to be a gifted and talented footballer. However, it is important to have an enthusiasm for playing the game and a strong interest in coaching.

### Course Details

**Duration**  
2 years full-time.

**UCAS code**  
CX6C.

**Entry Requirements**  
A minimum of 48 UCAS tariff points. See pages 18-19 for more information.

**Assessment**  
Examinations, written assignments, report writing, practically delivered sessions, presentations (group and individual).

**Progression**  
BA (Hons) Sports Coaching or BA (Hons) Sports Studies.

**Career Opportunities**  
Football Professional, Football Centre of Excellent coach, Football in the Community coach, Football Development Officer or employment in the wider sports industry – such as Sports Psychology, Sports Marketing, Journalism or Sports Analysis.



### Myerscough & Nike

The Myerscough College Football Development Centre was recently selected by Nike Football to launch the global talent search campaign 'The Chance' in the UK alongside Manchester United and England defender Rio Ferdinand. Rio arrived unannounced at a Myerscough training match where he selected Myerscough College and England Schools Footballer Joe Bunney (now at Rochdale AFC) to be the first player to go forward.

This is just the latest development in a close relationship between the College and Nike Football which has in the past included product tests of the latest Nike kits, equipment and technology, including football boots, GPS monitoring devices and the latest in ball technologies.





Studying golf unlocks the door to a rewarding and exciting career in a sport that spans the globe and is played by more than 60 million people worldwide.

Golf is now a profession with a recognised career structure and fantastic employment opportunities both in the UK and overseas. Many of our past students are enjoying great success in all areas of this expanding industry, from professional players and coaches to education, events management and sales and marketing.

## Myexperience

### From student to golf pro:

I turned professional after gaining my Level 3 Diploma and Foundation Degree. I'm now competing at tournaments on the PGA European Tour and PGA Challenge Tour. I work hard on my game, the schedule can be tough and you need real dedication, but the rewards are worth it – I'm out there doing what I love! My 2011 season set the ball rolling, winning the PGA EuroPro Order of Merit, with victories in the Motocaddy Masters, the Northern Ireland Open and the Network Veka Classic at Mottram Hall – with a second round 63 and a fifteen under par 201 total, worth £10,000! Things have really taken off since then, with top ten finishes in 2015 at Challenge Tour events in Madrid and Copenhagen and then onto the European Tour Qualifying School, gaining the last card for the 2016 Race to Dubai! 2016 has produced some strong performances, including a fantastic 5th place European Tour finish in the Trophée Hassan II, at Rabat in Morocco, worth €58,000.

*Chris Hanson*



# Playing a round can enhance your career prospects



If you are serious about the golf business then there is no better place to study than Myerscough's International Institute for Golf Education (IIGE), in partnership with the University of Central Lancashire. We have extensive international links that can provide students with the opportunity to undertake European Tour work experience, internships in the USA, competitive tours in Spain and Portugal and European event management.

Students benefit from our highly experienced and qualified team of coaching, playing and academic staff and state-of-the-art facilities for golf. The College is a PGA regional examination centre.

### Enrichment Opportunities

- Sports scholarship from UCLan Excellence in Sport and R&A bursaries.
- High standard of competitive golf through the British Universities & Colleges Sport (BUCS), both individually and as part of the UCLan Golf Teams.
- Participation in the Collegiate and Prospects Golf Tours – both managed by the International Institute for Golf Education. The Collegiate Golf Tour is a scratch-based tour for category one players only. The Prospects Golf Tour is a handicapped-based tour open to all students in the UK. Venues for events include Mere, Royal Lytham & St. Annes, Ganton and Marriott Forest of Arden. There is also a prestigious Tour Final played overseas.  
*Please note that these events may incur additional costs.*
- The possibility of tournament work experience on the PGA European Tour at events in the UK, Portugal and Spain. Students have previously been involved at events including the Ryder Cup at Celtic Manor, the Dunhill Links Championships at St Andrews, the Turkish Airlines Open in Belek, the BMW PGA Championships at Wentworth, the Iberdrola Open in Majorca, the Portugal Masters in Vilamoura and the Castelló Masters in Valencia.
- Additional coaching awards e.g. Golf Leaders Award, Golf Rules and Tri-Golf.
- Overseas tours and training/development camps organised annually to mainland Europe – incorporating International Tournaments.

The International Institute for Golf Education (IIGE) has also seen further development with research activities. A significant number of staff are actively involved in academic research, with current PhD's focussing on psychological and sociological aspects of golf. The engagement of staff in research activities has a positive impact on the student experience, keeping them up to date with the latest developments in the sport.

## Resources

- A testing nine-hole golf course, GolfMark accredited for junior coaching
- One-to-one coaching with fully qualified PGA golf professionals and fitness instructors
- Resident sports psychologists
- Putting green and golf driving range
- Two indoor golf academies, including golf simulators, putting and chipping areas
- FlightScope, TrackMan, GC2 and K-VEST analysis equipment
- Access to top academic and sports facilities, including our new high performance sports centre
- Short game facility: Chipping and bunker area
- Fully equipped gymnasium and sports laboratory
- Numerous local championship courses
- Guest speakers and visits from professionals and industry experts

## Player Profiles

- Chris Hanson – PGA European Tour.
- Dave Corsby – EuroPro / Challenge Tour.
- Adam Kritikos – Greek National Team player.
- Michael Hearn – TASS, R&A, GB & Ireland Universities.
- Rebecca Gee – TASS, R&A.
- Egert Poldma – Estonia National Team, R&A.
- Mark Parry – Wales National Team, R&A.
- Kim Nygaard – Norwegian National Team, R&A.
- Rhodri Fieldhouse – Wales National Team, R&A.

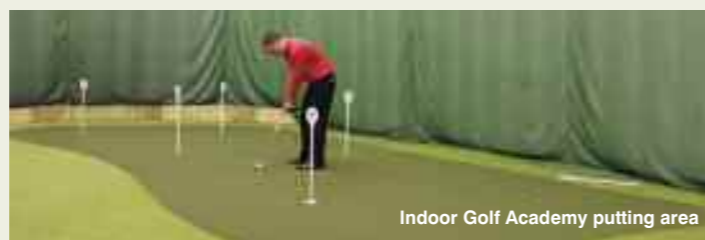
## Career Opportunities

There is unlimited employment potential in the golf industry, both in the UK and overseas. Our links with institutions such as Ohio State University have enabled several graduates to gain employment within the golf operations industry in the United States in venues including Sea Island, Quail Hollow, DaFuski Island, Pebble Beach and North and South Carolina. Many of our students have gone on to very successful careers in the golf industry. Here is a small selection from recent years:

- PGA Tournament Administrator, North Region.
- Professional PGA European Tour Caddy for Gary Lockerbie.
- Tour Director, American Junior Golf Tour.
- Golf Operations Director, Quail Hollow, Carolina.
- Director of Golf, Manchester Marriott, Worsley Park.
- Tour Professional – Challenge Tour / European Tour.
- Director of Golf, Julian Krinsky School of Golf, Philadelphia.
- Golf Operations Manager, Sea Island, USA.
- Tour Professional – PGA Europro Tour, EDP Tour, Germany.
- PGA of America Professional Golfer, Utah, USA.
- Company Representative, Titleist.
- Golf Services Supervisor, Celtic Manor.
- Events Supervisor, Marriott Hollins Hall, Leeds.
- Professional Club Fitter, Truefit Golf.
- PGA Qualified Golf Professional, Royal County Down.
- PGA Qualified Golf Professional, The Belfry.
- Manager, American Golf, Preston.
- Tour Director Midwest Collegiate Series, Michigan, USA.
- PGA Qualified Golf Professional, St. Margaret's GC, Ireland.
- PhD Studentship and Lecturer, Loughborough University.
- Operations Director, Royal Bahrain Golf Club.
- Golf Sales Manager, The Belfry.
- Golf Operations Manager, De Vere Oulton Hall, Leeds.



Former student  
Paul Kinnear in action at  
the 2015 Open



Indoor Golf Academy putting area

## Golfing Success

The College has an enviable reputation as one of the best golf academies in the country. Our dominance of College Golf has seen our teams win the Intercollegiate Golf Tour regional league for the past six seasons, win the 2015 national team finals and be hailed British Colleges Open Golf Champions three times in the last six years!

In partnership with UCLan Golf, the College retained the North of England's most prestigious league title, the British Universities & Colleges Sport (BUCS) Premier North Division, to qualify for the 'Championship Knockout' event, competing against teams from all over the UK and Ireland, and reaching the final for the second successive year. Over the past three seasons the side has recorded 24 wins out of 25 games.

Joe Banks won the 2015 Order of Merit in the Regional League (with Myerscough students taking four of the top five placings) and Gemma Batty was crowned National Women's Champion at the 2013 Tour finals. This follows the 2012 success of Cameron Massey and Paul Kinnear, who came first and second in the men's championship. Paul subsequently qualified for the 2015 Open Championship at St Andrews.

## Golf Studies

### Foundation Degree (FdA) Golf Management

The Foundation Degree in Golf Management programme has a phenomenal track record in developing well qualified graduates who possess the necessary skills for careers in golf club management, tournament operations and administration. It is also a perfect choice for students wanting careers in event management, marketing, equipment technology and media – as well as the option of becoming a golf professional.

The course is designed to enable students to achieve a practically-based vocational qualification. The programme incorporates presentations from specialist guest speakers and visits to industry sites. There is also a work-based learning module, with assistance from industry personnel in the assessment of students' performance. Modules include Professional Golf Development, Golf Course Management, Golf Retail Management, Event Management, Golf Club Financial Management, Golf Equipment Repairs, Applied Golf Science and Technology, Marketing for Golf, Research Methods, Human Resource Management and Golf Facility and Operations Management.

The Work Skills Development and Work Project modules will use a relevant working environment to provide the opportunity for students to develop real practical and technical skills and help prepare them for employment in their chosen subject area.

Students also have the flexibility to apply to undertake a 12-month work experience placement – as part of the Ohio State University internship programme – at the end of their course. This provides a superb opportunity to gain front-line skills in the golf industry, with a range of venues throughout the world.

It should be noted that to succeed on this course it is not a pre-requisite to be a low handicap golfer.

### Course Details

**Duration**  
2 years full-time.

**UCAS code**  
N225.

**Entry Requirements**  
A minimum of 48 UCAS tariff points. See pages 18-19 for more information.

**Assessment**  
Assignments, presentations, written examinations, practically delivered sessions.

**Progression**  
One-year BA (Hons)  
Golf Management top-up.

**Career Opportunities**  
Golf Operations  
Management, Golf Retail  
Industry, Golf Professional,  
Golf Club Management,  
Golf Event Management,  
Golf Marketing, Golf  
Manufacturing, Golf  
Equipment, Media, Golf  
Development Programmes,  
Golf Tour Company  
Representative, Player  
Management.

## Golf Studies

### Foundation Degree (FdSc) Golf Coaching and Performance

The Foundation Degree in Golf Coaching and Performance has been designed to develop suitably trained and qualified graduates to gain rewarding and exciting careers in the golf industry. It is an intellectually stimulating course, with a strong practical focus – enabling students to improve their practical skills, academic knowledge and coaching experience. The course focuses on coaching within both the context of a community/club environment and a high performance environment.

The main elements of the course include a range of golf coaching modules that cover philosophies, styles and practices of golf instruction and the elements of skills development, coaching techniques, game analysis and sports science necessary to improve golf performance. Additional modules focus on the three key areas of sport science utilised in golf coaching; physiology, psychology and biomechanics. The course also covers elements of talent identification, golf development, strength and conditioning training, fitness testing and exercise prescription for golf.

There is a strong vocational ethos that runs through the course with students encouraged to get involved with many work experience opportunities via the work skills and work project modules. Students will have the opportunity to develop their coaching skills working with the College's Elite Golf Squads and Golf Academy members. In addition, golf coaching skills may be delivered in schools as part of the Schools Development Programme (subject to DBS clearance).

It should be noted that to succeed on this course it is not a pre-requisite to be a low handicap golfer. However, a strong interest in coaching and a desire to improve your game is important.

### Course Details

**Duration**  
2 years full-time.

**UCAS code**  
XX51.

**Entry Requirements**  
A minimum of 48 UCAS tariff points. See pages 18-19 for more information.

**Assessment**  
Assignments, presentations, written examinations, practically delivered sessions.

**Progression**  
BSc (Hons) Golf Coaching  
and Performance top-up or  
BA (Hons) Golf Management  
top-up.

**Career Opportunities**  
Golf Professional,  
Golf Coach, Golf  
Development Officer,  
Golf Technology Analyst,  
Golf Sport Science  
Consultant.



# Golf Studies



## BA (Hons) top-up Golf Management

The Myerscough Golf Management programme offers a fast-track route to achieving an Honours Degree, for students holding a golf-related Foundation Degree or Higher National Diploma. The course provides a management-focused golf programme and is designed to develop awareness and ability in corporate management, giving students the skills and confidence necessary to manage others in the golf industry.

Six modules are studied, allowing for analysis of management issues underpinning golf. The taught modules include:

- Contemporary Issues in Golf
- The Golf Business
- Sports Development in Golf
- International Golf Developments
- Career Development in Golf.

This course is also available for part-time online study. See page 24.

An ethos of career planning and development also runs through the curriculum, in order to develop employability and prepare students for a successful career in the UK or overseas. A Golf Management study project or dissertation is also included, enabling students to produce a detailed piece of academic research relating to the golf industry.

The course is designed to enable successful students to analyse key academic themes and critically evaluate the wide range of management issues within different sectors of the golf industry.

It should be noted that to succeed on the course it is not a pre-requisite to be a low handicap golfer.

This course is also available online enabling students to achieve an Honours Degree through part-time study at a distance from the College. This is very suitable for applicants who currently work within the Golf Industry and have a golf-related Foundation Degree or Higher National Diploma.

### Course Details

**Duration**  
1 year full-time.  
2 years part-time online.

**UCAS code**  
N226.

**Entry Requirements**  
Successful completion of an HND or Foundation Degree in Golf Studies, Sports Studies or Sportsturf and Golf Course Management.

**Assessment**  
Assignments, presentations, written examinations, practically delivered sessions.

**Progression**  
Masters Degree in a related subject.

**Career Opportunities**  
Extensive positions at managerial level within the Golf industry.



# Golf Studies



## BA (Hons) top-up Golf Coaching and Performance

The Myerscough Golf Coaching and Performance programme offers a fast-track route to achieving an Honours Degree, for students holding a golf-related Foundation Degree or Higher National Diploma. The course provides an excellent coaching and performance-focused golf programme that will equip students with a comprehensive understanding of the science and practice of golf coaching.

There are two main areas within golf coaching – one at community/club level and the other at an elite level.

Six modules are studied, allowing for analysis of coaching and performance issues underpinning golf. The modules include High Performance Coaching for Golf, High Performance Conditioning for Golf (psychology mental and physical preparation techniques), Science at Elite Level Golf (physiology, biomechanics and nutrition, Coaching Specific Golf Groups and Career Development in Golf. There will also be opportunities for independent study in the form of a dissertation or a detailed golf project.

Students will have the opportunity to develop their coaching skills working with the College's Elite Golf Squads and Golf Academy members. Golf coaching skills may also be delivered in schools as part of the Schools Development Programme (subject to DBS clearance).

It should be noted that to succeed on the course it is not a pre-requisite to be a low handicap golfer. However, a strong interest in both golf coaching and performance, with a desire to improve your game is important.

### Course Details

**Duration**  
1 year full-time.

**UCAS code**  
5Y81.

**Entry Requirements**  
Successful completion of an HND or Foundation Degree in Golf Studies or a related subject.

**Assessment**  
Assignments, presentations, written examinations, practically delivered sessions.

**Progression**  
Masters Degree in a related subject.

**Career Opportunities**  
Golf Professional, Golf Coach or employment in the wider Golf industry.

# Golf Studies



## MA in Golf Management

Our Masters Degree in Golf Management is designed to provide students with the knowledge and expertise that will enable them to make a significant contribution to the dynamic and complex global golf industry. It is ideal for existing industry professionals, and/or students with an appropriate undergraduate qualification, who aspire to a career in golf management.

The course provides a management-focused golf programme which develops awareness and ability in corporate management, equipping students with the skills and confidence necessary to manage others in the golf industry. More specifically, the course develops students' knowledge of international golf business through a range of relevant modules.

One of the first year modules covers the global golf industry, including the spread of golf in the Middle and Far East, the globalisation of the world golf tours, the lives of professional golfers and the social, economic and environmental consequences of golf's global rise and 'internationalisation'. Another addresses strategic management in golf (planning, marketing, environmental analysis, leadership and human resource management.) A golf consultancy project enables students to carefully monitor an organisation's internal and external environments, detect early signs of opportunities and threats, and build a plan to influence current and future developments.

Second year modules focus on brand awareness and marketing strategies relating to the global golf industry, research methodology (data organisation, statistical skills, data presentation, dissemination and problem solving), contemporary developments in golf (race, gender, class and disability participation in golf, drugs in golf, golf and the Olympics, golf and the mass media, player management and the relationship between golf and health).

The final year dissertation is a triple module and allows students to design and conduct a substantial piece of independent, supervised research related to their chosen area of interest in the global golf market.

### Course Details

**Duration**  
3 years part-time online.

**UCAS code**  
Not required – please apply directly to the College via the Myerscough website.

**Entry Requirements**  
Successful completion of a relevant Honours Degree, with a minimum 2:2 classification or relevant professional qualifications and experience.

**Assessment**  
Assignments, presentations, written examinations, dissertation and practically delivered sessions.

**Progression**  
PhD.

**Career Opportunities**  
Extensive positions at managerial or director level within the Golf industry.



# Shooting for maximum success



## Basketball Coaching

Myerscough College's Basketball Academy has proved hugely successful since its launch in 2013, with many students progressing up the development ladder.

Basketball is a rapidly growing sport in the UK and gaining in popularity throughout Europe.

With excellent academic and sporting links at home and abroad, Myerscough aims to deliver in the classroom, as well as on court – to help our student athletes reach their goals.

### Myexperience

#### From student to US College star

I graduated from Myerscough in the summer of 2014. I then undertook a scholarship with American side, Montana State Bobcats before joining the roster of Emporia State University for 2015/16. It's an amazing opportunity where I'm living the life of a pro and play in front of crowds of up to 20,000 people. There is no better feeling and I'm proud of what I've achieved so far.

Myerscough College has developed a great programme with lots to learn. It's a well-rounded experience for students on the course and it's designed to provide students with the unique opportunity to live and train as professional athletes and develop a comprehensive understanding of the game, whilst studying towards academic qualifications that are designed to provide the ideal pathway to the professional world of Basketball.

*Bradley Fisher*



## Basketball Coaching

Foundation Degree (FdA)  
Basketball Coaching

This Foundation Degree course has been designed to provide students with the practical skills, academic knowledge and coaching expertise that will ultimately enable them to gain employment as either basketball coaches or development officers, or to start a career in the wider sports industry.

It is an ideal choice for anybody who wants to develop their knowledge of basketball from a practical perspective. The course enjoys excellent links with the industry, most notably Basketball England. Students will gain vital work experience on and off the field, from training principles to video analysis systems. The course is based around the work of the modern basketball coach and encourages students to develop innovative modern ideas, underpinned by traditional values and practices.

The main elements of the course include a range of basketball coaching modules that cover the philosophies, styles and practices of coaching and the elements of skill acquisition, sports performance and delivery techniques. The coaching covers a broad spectrum of community, club and high performance environments. The course also includes elements of talent identification, sports marketing, sports development and basketball event management. A module focusing on the science of basketball will help develop an awareness of the physiological, psychological and biomechanical factors linked to successful performance.

To succeed on this course it is not a pre-requisite to be a gifted and talented basketball player. However, it is important to have an enthusiasm for playing the game and a strong interest in coaching. Students are encouraged to develop their coaching skills through the Basketball Academy's peer mentoring programme and will also have the opportunity to undertake coaching courses.

### Course Details

Duration  
2 years full-time.

UCAS Code  
B3C6.

Entry Requirements  
A minimum of 48 UCAS tariff points. See pages 18-19 for more information.

Assessment  
Examinations, written assignments, report writing, practically delivered sessions, presentations (group and individual).

Progression  
BA (Hons) Sports Coaching or BA (Hons) Sports Studies one-year top-up.

Career Opportunities  
Basketball Professional, Basketball Development Officer, Community Sport or Basketball Coach, Gym Instructor or employment in the wider sports industry – such as Sports Psychology, Sports Marketing, Journalism, Sports Analysis or Sports Development.

Students receive high quality coaching every day – from a team and individual perspective – and have unlimited access to our state-of-the-art strength and conditioning facility.

The Academy operates just like a College Development Centre, encompassing academic lessons, coaching sessions, physio/rehabilitation clinics and competitive fixtures. It is supported by qualified tutors and highly experienced coaches.

### Resources

Myerscough College is superbly equipped for the teaching of basketball, with many great resources at the Bilborrow centre in Preston and additional regional training and coaching venues.

- New £2 million high performance sports centre with state-of-the-art basketball provision
- Excellent partnerships with the basketball industry and top European teams
- Modern gymnasium and additional strength and conditioning suite
- Superb links with top American universities
- Fully qualified coaches with expert knowledge in the field
- Physiotherapy and Rehabilitation clinics



# Kick start your career with a professional conversion



## Rugby Coaching

With England having hosted the 2015 Rugby World Cup, there has never been a better time to prepare for a career in this great sport.

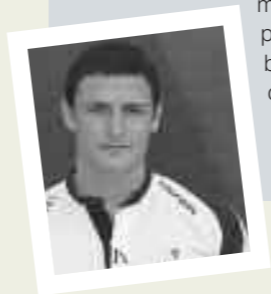
Rugby World Cup 2015 offered a unique opportunity to deliver a lasting participation legacy for rugby union in England. From building capacity (by improving facilities and increasing the quantity and quality of coaches) to getting more schoolchildren playing rugby or inspiring participation by encouraging lapsed players to return to the field, plans are underway to grow the game.

Figures suggest that rugby has been increasing in popularity year-on-year since 2002, with more and more youngsters taking up the game and more teams and competitions being introduced.

Additionally the sport has recently seen an 81% rise in the number of women participants, further highlighting the increased interest amongst both genders.

### Myexperience

**From student to rugby professional:**  
Nothing compares to being part of the beautiful game! It's a real team sport and I always strive for perfection. Since finishing my course I've signed a professional contract with Sale Sharks, progressed through their Academy and scored a try on my debut against Newcastle Falcons. Since then I was named as the 2012 Young Player of the Year and have firmly established myself as a try-scoring winger in the side, signing a brand new contract earlier this year. It's been a whirlwind few years which has also seen me complete my first coaching qualifications; passing on my knowledge to a new batch of youngsters through a number of rugby coaching initiatives.



*Tom Brady*



Students working at Twickenham during the HSBC Sevens World Series



**SALE SHARKS**  
The Myerscough College Rugby Academy is a joint venture in partnership with Sale Sharks Rugby and is the accredited RFU Elite Player Development Centre for the North West.

Our relationship with Sale Sharks and the RFU provides a unique opportunity for students to train as professional athletes and secure a dream job in professional Rugby Union.

Playing rugby at Myerscough also provides an unrivalled platform for students to demonstrate their talent to one of the leading clubs in AVIVA Premiership Rugby and the chance to break into the Sale Sharks youth or senior squads.

Our specialist team of teaching and coaching staff focus on developing students; as players, coaches, referees and administrators, as well as providing elite training and coaching – on a day-to-day basis – before encouraging students to represent club sides at weekends.

Our exceptional links with local rugby clubs – such as Fylde, Preston Grasshoppers, Garstang, Thornton Cleveleys and Fleetwood – provide a range of different playing opportunities.

In order to maximise student's skills development, Academy players are given the opportunity to train at the highest level in professional Rugby with Sale Sharks.

Our Academy continues to produce students who achieve representative, county or national selection. During the last few years, a number of players from the Academy have represented Lancashire, England Colleges, and RFU England Squads at Under 16, 18, 19 and 20 level, whilst other students made the Portugal and Tongan national sides. We hold the record of recently having more Academy players selected for an England representative squad than any other college in the country. This, combined with players progressing to Sale Sharks and the likes of Cardiff Blues, means we have seen around 20 students progress to the professional game.

## Rugby Coaching

### Foundation Degree (FdSc) Rugby Coaching

The Foundation Degree in Rugby Coaching has been designed to develop highly trained and qualified graduates with the academic knowledge, coaching expertise and practical skills to gain rewarding and exciting careers in the rugby industry.

Students are offered a wealth of opportunity to develop their coaching skills and gain vital experience, on and off the field, from organising and delivering competitions to training principles and performance analysis. This makes this course an ideal choice for anyone who wants to develop their knowledge of rugby from a vocational perspective.

The range of modules develop the core skills required by the rugby industry; primarily focusing on the development of coaching styles, methods and philosophies, rugby practices, delivery techniques, skill acquisition and the factors implicated in elite performance. Other modules help develop an awareness of the physiological, psychological and biomechanical factors linked to successful rugby performance. Students will also gain an understanding of sports and event management, marketing and development through the delivery of their own rugby tournament in association with the RFU. The course also covers the organisation, structure and development of community sports clubs whilst increasing the awareness of talent identification and player pathways in rugby.

Opportunities are also available to achieve recognised qualifications including Tag, Rugby Ready, UKCC Level 1 & 2 in coaching Rugby Union, ELRA and other coaching related qualifications. Myerscough also participates in the British Universities League (BUCS).

It should be noted that to succeed on this course, it is not a prerequisite to be a gifted and talented rugby player. However, it is important to have an enthusiasm for playing the game and a strong interest in and some prior experience of coaching.

### Course Details

<b>Duration</b> 2 years full-time.	<b>Progression</b> BA (Hons) Sports Coaching or BA (Hons) Sports Studies one-year top up.
<b>UCAS Code</b> CX6D.	<b>Career Opportunities</b> Rugby Centre of Excellence Coach, Rugby in the Community Coach, Performance/Academy Coach, Rugby Development Officer, Rugby Technology Analyst, HITZ Project Officer, Sports Development Officer, PE Teacher.
<b>Entry Requirements</b> A minimum of 48 UCAS tariff points. See pages 18-19 for more information.	
<b>Assessment</b> Students will face a variety of assessments including coursework, essays, reports, presentations and group work.	



# Agricultural Machinery Engineering

Agricultural machinery engineering involves the development, operation, maintenance and testing of highly specialised equipment. The United Kingdom is one of the main producers of agricultural machinery and these products are one of the main exports of the UK engineering industry. The industry employs many thousands of people in the design, manufacture and service sectors.

## Myexperience

### From student to machinery specialist:

I've always loved Mechanisation but the thought of moving from a completely unrelated discipline into the industry was a daunting one that was made very easy with the support of the staff at Myerscough College and the world-class facilities on site. I completed my course and progressed to a full time role at Gunn JCB where my responsibilities included warranty, retail repairs, servicing, fabrication and the managing and transport of both new and used equipment. I've since been promoted to Group Sales Co-ordinator. It's my dream job and Myerscough helped me achieve it.

*Martin Norry*



# Operator and machine in harmony

Our Higher Education courses focus on the management, organisation and logistics of machinery operations around the world. The degree programmes are designed to help students develop the problem solving skills and mechanical knowledge that they will require in the workplace. Students are also encouraged to actively participate in a range of special events and activities as part of their courses: organising, planning and managing the entire operations.



The concept of 'action learning' is used as widely as possible throughout the courses. The degree programme is delivered by a highly qualified, dedicated and experienced teaching team, with strong support from leading industry partners. Employers are keen to employ Myerscough graduates as they have both the practical workshop skills and the managerial expertise that they require.

## Resources

- State-of-the-art Engineering Centre housing an extensive fleet of vehicles, tractors, field machinery and equipment
- Access to extensive laboratories, testing equipment and commercial research and trials areas
- Three fully equipped engineering workshops complete with a wide range of maintenance equipment including diagnostic and test facilities
- An off-road vehicle test facility and demonstration area
- Fully equipped welding facilities that include manual metal, arc, oxyacetylene and MIG and TIG welders
- A comprehensive Information Technology suite with computer aided design equipment and the latest machinery management software



There are fantastic employment opportunities for anyone with a keen interest in agricultural machinery, who possesses the relevant academic and practical skills. An increased demand for trained staff means that career opportunities exist throughout the world, with many large machinery dealerships based in Europe, the United States, Canada and Australia.

# Agricultural Machinery Engineering

Foundation Degree (FdSc)  
Agricultural Machinery Engineering



Mechanisation is a multidisciplinary subject which involves the design, construction and preparation of agricultural vehicles. It also includes the planning of teamwork and project management.

The Foundation Degree programme provides an “action learning” experience, whereby learning takes place by real “hands on” practical work supported by research, group seminars and academic study. The course is ideal for anyone with a keen interest in machinery who wants a career in this challenging and exciting industry or for those people currently in employment who want to progress to management positions.

The course provides students with both the technical and managerial skills necessary to operate at the increasingly high and complex levels in the mechanisation industry. The course draws on diverse disciplines such as machinery, business, science, engineering, IT and logistics. Although focused on the managerial aspect of the chosen career path, considerable time is spent honing practical skills in the workshops in project development and industry case studies.

Subjects include machinery and engineering principles, vehicle technologies, drive train systems (the design and construction of engines and gearbox systems), electronic control systems, IT and CAD.

Additional modules cover contemporary industry developments, manufacturing and fabrication, technical systems related to data capture, vehicle diagnostics and machinery management.

To develop your practical skills, a range of work experience opportunities and work-based projects are available, both in the UK and overseas – some in partnership with Ohio State University. These enable you to relate your academic studies to current issues in the agricultural machinery industry. The Foundation Degree offers the flexibility to take an optional 12 month ‘gap year’ at the end of the course, giving you the opportunity to gain work experience in the industry anywhere in the world.

## Course Details

**Duration**  
2 years full-time.

**UCAS Code**  
H3N2.

**Entry Requirements**  
A minimum of 48 UCAS tariff points. See pages 18-19 for more information.

**Assessment**  
Assignments, industrial projects, case studies,

essays, technical reports and examinations.

**Progression**  
BSc (Hons) Agricultural Machinery Engineering top-up.

**Career Opportunities**  
Machinery Manufacturing, Management, Preparation, Adaption, Design and Development.



Purpose built welding and fabrication workshops



## Engineering Centre excellence



Our state-of-the-art, £4.4 million, Engineering Centre



# Agricultural Machinery Engineering

BSc (Hons) top-up  
Agricultural Machinery Engineering



This course is designed as a progression route for those students who have completed a Foundation Degree or Higher National Diploma in a relevant subject area. The Honours degree programme meets the demands of the “off-highway” sector of the engineering industry. It focuses on machinery management policy, logistics, fleet vehicle management, quality assurance, manufacturing standards, professional career development and international trade within the agriculture and engineering sectors.

The course adopts the same unique style of teaching and learning first experienced during the Foundation Degree. It also includes a dissertation ‘Industry Project’ module, for which students have a choice of researching an engineering/technical challenge or alternatively focusing on a detailed management issue.

The course addresses a range of important themes, including international developments and the environmental, political and legislative influences that shape the engineering industry. Additional modules cover international trade logistics and the importance of supply chain management, import and export licenses, load regulations, freight tracking and cross border trade. Quality Assurance and manufacturing standards are also explored – analysing and evaluating minimum standards, added value, performance, effectiveness, continual improvement and quantitative measurement.

The degree programme also investigates fleet vehicle management and the criteria required to establish a successful company policy – focusing on driver hours, operator certification, transport legislation, insurance and licence requirements.

## Course Details

**Duration**  
1 year full-time.

**UCAS Code**  
H321.

**Entry Requirements**  
Successful completion of an HND or Foundation Degree in a related subject.

**Assessment**  
Assignments, report writing, case studies, presentations, written examinations, professional development portfolio.

**Progression**  
Masters Degree in a related subject.

**Career Opportunities**  
Machinery Manufacturing, Management, Preparation, Adaption, Design, Research and Development, International Trade and Logistics, Strategic Management and Vehicle Management.

The British motorsports industry is widely recognised as the best in the world, with Britons at the heart of a vast range of worldwide motorsport activities that puts the UK in pole position in this superfast, technology driven sector.

## Myexperience

### From student to motorsport engineer:

After leaving College I was fortunate enough to secure a job with the Ford World Rally Team, M-Sport. My role was constantly developing, responsible for 'lifing' many of the chassis and suspension parts and allocating components for use on individual cars. This important work not only helped to increase vehicle reliability but also provides financial savings by maximising the usage of each part. Since then I've moved to Jaguar Land Rover as a Stability Control Engineer, driving the development cars – on the limit of what is physically capable – from frozen ice lakes in Sweden to the Nürburgring Nordschleife in Germany. The skills that I learnt at College have greatly assisted me with these roles and helped me develop into the multi-skilled worker that I am today.

*Robert Gibson*



**M-Sport Managing Director, Malcolm Wilson OBE, is an Honorary Fellow of Myerscough College**



# Kickstart your career at the front of the grid



Motorsport is a huge industry with many Formula One and World Rally teams based in the UK. The sector has a £9 billion turnover, with around 4,500 companies involved in motorsport and high performance engineering. These companies supply the leading-edge technology used in many race cars, as well as the design and manufacture of components used in race series.

Myerscough believes that hands-on experience is an important aspect of learning and therefore encourages students to take part in a wide range of motorsport events throughout the UK and overseas. For example, during the recent FIA WRC Academy championships (rallying's premier training programme for young drivers), a team of eight degree students from Myerscough supported M-Sport's technical and service teams maintaining the fleet of 10 Ford Fiesta R2 rally cars. They attended WRC events as varied as the Vodafone Rally of Portugal and the rallies in Finland, Germany, France and Spain. This unique programme continued in 2016, with students supporting the Drive DMACK Fiesta Trophy at five WRC events across Europe.

### Competition Vehicles

Our fleet of competition cars is constantly being updated with new vehicles that incorporate the latest racing technology. It currently includes two Formula Fords, a Skoda Fabia vRS build project and a range of private customer cars undergoing research, development and testing.

### Enrichment Activities

Last year students worked at various race events in the UK and overseas, and made numerous visits to race and rally teams. Students organise social events and visits as part of their course.

### Career Opportunities

Many of our students have progressed to higher qualifications or started exciting careers in the world of motorsports. Current job prospects are excellent, with Myerscough graduates forging successful careers for themselves as technicians and mechanics, or in data analysis, logistics and management trainee roles, with the many motorsport teams based in the UK. Here are just a few of the leading companies who have employed former Myerscough students:

- World Rally Team (M Sport)
- Chevrolet World Touring Car Team
- Don Buckley Motorsport
- Fortec Formula 3
- Jamun Racing
- Kevin Mills Racing (Formula Ford)
- McLaren
- Mercedes-Benz
- Porsche Cars GB
- Prodrive
- Team Dynamics
- Tony James Electrical Systems
- Triple R Racing (Seat Team)
- Arden International Motorsport
- Russian Time GP2
- Status GP3
- GPM Motorsport.

## Resources

- A comprehensive range of circuit race cars, rally cars and support vehicles
- Seven Motorsport workshops with dedicated areas for competition repair, engine building, special projects and electrics
- Engine, gearbox and chassis rigs
- Data analysis monitors
- Specialist diagnostic equipment
- 10 experienced motorsports staff



# Motorsports

## Foundation Degree (FdSc) Motorsport Management and Logistics

Motorsports is a multidisciplinary subject which involves the design, construction and preparation of competition vehicles. Our Foundation Degree focuses on the fundamentals of motorsport technology whilst also providing the opportunity to specialise in the management, marketing and operational aspects of the industry. You will gain an understanding in the current industry practices and standards, essential in preparing you to join the £9 billion motorsport industry.

First year modules include competition car technology (the principles of vehicle componentry and subsystems, including engine, transmission, chassis and suspension) and competition car preparation (including vehicle build and records management for product/process improvement). Additional modules cover business management (human resources, leadership, marketing and finance), motorsport logistics and Information Technology and CAD.

The second year of the programme builds on many of the themes covered during the first year. Modules cover technical systems (data capture, data logging and vehicle diagnostic improvements), motorsport team operations, human resource management, event management and motorsport media relations (including PR and sponsorship management.)

The acquisition of practical skills and experience is an integral part of the Foundation Degree course, with dedicated units covering work skills development and work-related projects; the latter focusing on project management skills, resource management, communications and problem solving.

You will get the opportunity to demonstrate your skills in the preparation of race and rally cars for competitive events. This experience of track-side work at competitive race events will keep you up to date with industry practices and provide a unique opportunity for you to liaise with future employers.

### Course Details

**Duration**  
2 years full-time.

**UCAS Code**  
H334.

**Entry Requirements**  
A minimum of 48 UCAS tariff points. See pages 18-19 for more information.

**Assessment**  
Assignments, report writing, presentations, team-based activities, examinations.

**Progression**  
Successful students may 'top-up' to an Honours Degree in one year, on the BSc (Hons) Motorsport Management and Logistics programme.

**Career Opportunities**  
Myerscough graduates have gained employment in leading race teams and in all sections of the Motorsports industry. See the panel on page 88 for a comprehensive list.

# Motorsports

## Foundation Degree (FdSc) Motorsport Competition Car Technology

Motorsports is a multidisciplinary subject which involves the design, construction and preparation of competition vehicles. Our Foundation Degree focuses on the fundamentals of motorsport business whilst also providing the opportunity to specialise in the technology and technological developments associated with it. You will gain an understanding in the current industry practices and standards, essential in preparing you to join the £6 billion motorsport industry.

First year modules include competition car technology (the principles of vehicle componentry and subsystems, including engine, transmission, chassis and suspension) and competition car preparation (including vehicle build and records management for product/process improvement). Additional modules cover business management (human resources, leadership, marketing and finance), motorsport logistics and Information Technology and CAD.

The second year of the programme builds on many of the themes covered during the first year. Modules cover technical systems (data capture, data logging and vehicle diagnostic improvements), motorsport team operations, competition car componentry (selection processes, cost calculations, suitability, problem solving and fault rectification) and motorsport manufacturing and fabrication.

The acquisition of practical skills and experience is an integral part of the Foundation Degree course, with dedicated units covering work skills development and work-related projects; the latter focusing on project management skills, resource management, communications and problem solving.

You will get the opportunity to demonstrate your skills in the preparation of race and rally cars for competitive events. This experience of track-side work at competitive race events will keep you up to date with industry practices and provide a unique opportunity for you to liaise with future employers.

### Course Details

**Duration**  
2 years full-time.

**UCAS Code**  
H3N1.

**Entry Requirements**  
A minimum of 48 UCAS tariff points. See pages 18-19 for more information.

**Assessment**  
Assignments, report writing, presentations, team-based activities, examinations.

**Progression**  
Successful students may 'top-up' to an Honours Degree in one year, on the BSc (Hons) Motorsport Competition Car Technology.

**Career Opportunities**  
Myerscough graduates have gained employment in leading race teams and in all sections of the Motorsports industry. See the panel on page 88 for a comprehensive list.

# Motorsports

## BSc (Hons) top-up Motorsport Management and Logistics

This Honours Degree top-up programme is designed as a progression route for students who have completed a Foundation Degree or Higher National Diploma in a motorsport related subject. It focuses on developing an advanced understanding and knowledge of management and logistics in the motorsport industry and how organisations function within it.

The course covers strategic management, professional development, logistics and supply chain management. It also includes a module entitled Contemporary Issues in Motorsport, enabling students to critically evaluate factors that are likely to influence the development of the industry in coming years. Quality Assurance and manufacturing standards are also explored – analysing and evaluating minimum standards, added value, performance, effectiveness, continual improvement and quantitative measurement.

The course adopts the same unique style of teaching and learning first experienced during the Foundation Degree. It also includes an integral 'Industry Project' module that enables students to critically investigate an area of current motorsport development in order to develop their knowledge and further enhance their future employment prospects. Students have a choice of researching a technical challenge or alternatively focusing on a detailed management issue.

### Course Details

**Duration**  
1 year full-time.

**UCAS Code**  
NJ29.

**Entry Requirements**  
Successful completion of an HND or Foundation Degree in a related subject.

**Assessment**  
Assignments, report writing, case studies, presentations, written examinations, project portfolio.

**Progression**  
Masters Degree in a related subject.

**Career Opportunities**  
Motorsport Manufacturing, Management, Preparation, Adaption, Design, Research and Development, Team Co-ordinator, Press Officer, Administration, Strategic Management and Vehicle Management.

# Motorsports

## BSc (Hons) top-up Motorsport Competition Car Technology

This Honours Degree top-up programme is designed as a progression route for students who have completed a Foundation Degree or Higher National Diploma in a motorsport related subject. It focuses on developing an advanced understanding and knowledge of the vehicle technology and ancillary equipment used in the motorsport industry.

The course covers data acquisition systems (utilisation, development, data usage, advanced calculations and functions) and professionalism and leadership in motorsport (workshop management, vehicle management, fault diagnosis and rectification.) It also includes a module entitled Contemporary Issues in Motorsport, enabling students to critically evaluate factors that are likely to influence the development of the industry in coming years. Quality Assurance and manufacturing standards are also explored – analysing and evaluating minimum standards, added value, performance, effectiveness, continual improvement and quantitative measurement.

The course adopts the same unique style of teaching and learning first experienced during the Foundation Degree. It also includes an integral 'Industry Project' module that enables students to critically investigate an area of current motorsport development in order to develop their knowledge and further enhance their future employment prospects. Students have a choice of researching a technical challenge or alternatively focusing on a detailed management issue.

### Course Details

**Duration**  
1 year full-time.

**UCAS Code**  
H330.

**Entry Requirements**  
Successful completion of an HND or Foundation Degree in a related subject.

**Assessment**  
Assignments, report writing, case studies, presentations, written examinations, project portfolio.

**Progression**  
Masters Degree in a related subject.

**Career Opportunities**  
Motorsport Manufacturing, Management, Preparation, Adaption, Design, Research and Development, Component Specialists, Strategic Management and Vehicle Management.



# Photography

The photographic industry is currently experiencing unprecedented change with the development of the internet, social media and fragmentation of the traditional workplace. In response to increasing demand, Myerscough College offers an exciting and innovative Foundation Degree in Location Photography.

## Focus on your new career

In a recent survey undertaken by the British Photographic Council, 73% of professional photographers believed that formal photography qualifications were "essential and valuable". Successful photographers now need to be increasingly adaptable in their creativity and business management, as traditional routes into a photographic career evolve.

The Foundation Degree Location Photography develops confidence through industry experience and professional portfolio development. The relevant freelance and business skills are an integral part of the course, to help you succeed in this competitive industry. Career opportunities in location photography are varied and include sport and press photography, photojournalism, wedding and event photography, commercial, travel and advertising. Other associated careers include graphic design, education, technician and media support.

At various points during the programme students will be engaged in self reflection, peer group evaluation, practical work, research, development work, study visits as well as participating in lectures, seminars, tutorials and workshops.

The Foundation Degree Location Photography is run in partnership with the University of Central Lancashire. Students benefit from a cross-campus delivery where modules will be delivered at Myerscough College and using UCLan facilities.

This is one of the first Foundation Degrees in the United Kingdom to specialise in the emergent sport, festival and corporate event disciplines.

### Myexperience

#### From student to photographer:

It's amazing to think I'm on my way towards earning a living from doing the thing I enjoy most. This course has not only helped me develop my technical skills but taught me a great deal about design, encouraging me to be more creative in my approach; and winning prizes in a number of photographic competitions has given my confidence a real boost as well. Myerscough has shown me there are lots of ways of putting my passion for photography to work so I'm continuing my studies at university so I can really go for it.



*Dominić Lansiquot*

### Resources

- Wide range of professional photographic equipment and darkrooms
- Picturesque campus with impressive sports facilities
- Computer aided design studio for digital imaging
- A professional grade studio lighting system
- Extensive industry links
- Opportunity to work on live briefs

#### Further resources available at UCLAN

- Award winning Media Factory creative talent base
- Photography digital suite
- Photography dark rooms and studios
- A range of Macs loaded with the latest photography software including Adobe CS4, Capture One, Premier, Final Cut Pro, After Effects, Director, Macromedia Studio MX, Apple Works and Mac Link Plus



# Photography

Foundation Degree (FdA)  
Location Photography

The Foundation Degree Location Photography is a new and innovative course designed for students looking to achieve a higher education qualification with a practical focus. Its aim is to inspire creativity and develop existing photographic skills to meet the exacting standards of current industry practice.

Both traditional and contemporary digital skills will be explored during the two year course, utilising our highly skilled staff and the superb natural environment on site at College.

Topics covered during the first year include technical photography skills in a work-related setting – enabling students to gain confidence with a range of clients in a range of locations. Additional modules cover the use of balance, symmetry, shape and form in relation to art and photography, the use of contemporary and historical practices and a focus on sports photography. One module examines landscape and natural history photography, placing an emphasis on photographing the local countryside, including wildlife and gardens.

Year two modules examine photography at public and private events such as weddings, corporate functions, festivals and concerts as well as reportage photography. Business planning will also be addressed, focusing on the skills required to establish a successful photographic business. Students also undertake a work photography project and an independent study project, which will culminate with an exhibition of their photographs.

One module each year will be delivered by the University of Central Lancashire – addressing photographic skills, techniques and the constructed image. These modules will help familiarise you with the resources and expertise available at UCLan, whilst also providing further information about the opportunity to progress to their one-year BA (Hons) Photography top-up programme.

### Course Details

**Duration**  
2 years full-time.

**UCAS Code**  
W640.

**Entry Requirements**  
A minimum of 48 UCAS tariff points. See pages 18-19 for more information.

**Assessment**  
100% coursework including assignments, presentations and portfolio work.

**Progression**  
One-year BA (Hons) Photography top-up at UCLan.

**Career Opportunities**  
Areas where graduates have gone on to find work include photographic studios, photojournalism and documentary areas, editorial work, sports photography, advertising, fashion photography, photographic arts, museum and gallery work, and arts administration.



# 18 holes, maintained 364 days a year



## Sportsturf

The most popular team and individual sports played outside today involve the use of turf or grass surfaces. These include golf, football, rugby, cricket, bowls and horseracing.

If you are passionate about sport and would like to work outdoors, our courses offer an excellent platform to a career in sportsturf with superb employment prospects.

### Myexperience

#### From student to greenkeeper:

I graduated from Myerscough College with a BSc Honours degree in Turfgrass Science. I'm currently Vice President of the Golf Course Superintendents Association of Ireland (GCSAI) and Course Superintendent at the Galway Bay Golf Resort, one of Ireland's truly great courses, where I will hopefully progress to Head Superintendent in a few years. I'm also an R&A Scholar.

My studies took me to the historic K Club when it hosted the Ryder Cup and I have recently returned from Rio where I was honoured to be part of the greenkeeping team for the Olympic golf course.

I chose Myerscough as it has a great reputation in the industry and I was instantly impressed by the facilities, teaching, industry links and emphasis on practical work and projects. Myerscough has really opened many doors for me in the world of sportsturf.

*Damien Coleman*



### Excellent Training

There are fantastic opportunities both in the UK and overseas for people who are trained and qualified in sportsturf. Careers exist at all levels, from assistant groundspersons and greenkeepers to managers of international sports facilities such as Premier League and European Football Clubs and the major elite Golf Courses.

Our degree courses will equip you with the skills that are necessary to build, maintain and manage quality turf surfaces to a high standard. Students learn the science behind how grasses grow, as well as soils, rootzones, drainage and a wide range of maintenance practices. You will gain an understanding of the demands of sport and what players need or expect from turf surfaces. You will be taught how to provide these conditions all year round and in all weather conditions. Students also get the chance to operate sophisticated machinery and equipment and to develop the practical skills needed to maintain, present and repair sportsturf surfaces.

For those already working in the industry and wanting to secure the right qualifications to develop their careers, part-time and online study options are available.

### Career Opportunities

The sportsturf industry has seen a significant increase in demand for skilled professionals at Higher Education level. Vacancies exist in many areas such as Golf Course Management, Local Authorities, Contract Management and Consultancy.

Our sportsturf graduates have gone on to a range of exciting and rewarding careers in this country and around the world including groundsman and greenkeeper positions at:

- Queenwood Golf Club
- Wimbledon All England Lawn Tennis Club
- Northern Lawn Tennis Club
- Kauri Cliffs Golf Club, New Zealand
- St Andrews Links Trust
- Worcestershire County Cricket Club
- Royal Lytham and St Annes Golf Club
- Royal Birkdale Golf Club
- Loch Lomond Golf Club
- Manchester City Football Club
- Paris Saint-Germain Football Club
- Arsenal Football Club
- Real Madrid Football Club

### Industrial Work Experience

Students have the opportunity to undertake an optional 12 month paid work experience placement at a range of golf clubs and sports stadia in the UK, Europe and USA. Regular experience providers include Loch Lomond, The Belfry, East Sussex National Golf Links, The London Club, The K Club, Augusta National Golf Club, Oakland Hills Golf Club, Double Eagle Club, Valhalla Golf Club, Worcestershire County Cricket Club, Blackburn Rovers Football Club and Wimbledon All England Tennis Club.



Damien Coleman at the Rio 2016 Olympics



## Resources

The new Sportsturf Technology Unit is at the centre of the vast sportsturf facilities at Myerscough. This comprises:

- A nine-hole golf course displaying a wide range of design philosophies and construction profiles, some of which are the only examples in the UK
- A fully automated irrigation system with a variety of sprinkler heads, controllers and fittings
- Turf-care management software
- Winter sports pitches including hard porous hockey, football, rugby and training areas
- Demonstration and trial plots
- Practice putting and chipping greens
- A wide range of maintenance equipment and tools
- Fully-equipped workshops
- Turfgrass research laboratory
- New 3G Pitch

## Equipment

Working closely with three of the largest international suppliers of turf care machinery, Ransomes Jacobsen, Kubota and Bernhards, we are able to ensure that all students develop their practical competencies using the most up-to-date and sophisticated machinery on the market.

Ransomes Jacobsen for example also sponsor several student prizes and uses their staff expertise to provide training materials and support guest lectures, seminars and tutorials at the College.



# Sportsturf

## Foundation Degree (FdSc) Sportsturf



The Foundation Degree in Sportsturf has been designed to enable students to achieve a higher education qualification with a practical focus. It has been developed in partnership with industry experts and is an ideal choice of degree for people already working in the industry, as well as those without experience hoping to start a fast-track career in sportsturf. All students will gain the relevant practical and technical skills needed for positions of responsibility in this fast growing sector.

Subjects studied include plant biology, soil science and soil technology, sports turf technology, cultural practices in sportsturf (turfgrass establishment, growth and development), pests, diseases and weeds, construction, irrigation and drainage and sportsturf machinery management. Additional modules cover business management, sports facility design and environmental and conservation issues relating to sportsturf management.

The acquisition of practical skills and experience is an integral part of the Foundation Degree course, with dedicated units covering work skills development and work-related projects.

Students also have the flexibility to apply to undertake a 12-month work experience placement – as part of the Ohio State University internship programme – at the end of their course. This provides a superb opportunity to gain front-line skills in the golf industry, with a range of venues throughout the world. See page 16 for more information.

Successful completion of the Foundation Degree provides access to the final year of the Honours Degree programme.

Endorsed by the Institute of Groundsmanship



This course is also available for part-time online study. See page 24.

### Course Details

**Duration**  
2 years full-time.  
3 years part-time online.

**UCAS Code**  
D449.  
Not required for part-time applications which can be made directly to the College.

**Entry Requirements**  
A minimum of 48 UCAS tariff points. See pages 18-19 for more information.

**Assessment**  
Assignments, presentations, report writing, case studies, final examinations.

**Progression**  
To the final year of BSc (Hons) Sportsturf Science and Management.

**Career Opportunities**  
Sports Facility Management, Golf Course Management, Education and Training, Industry Support Services, Sales and Promotion.

# Sportsturf

## BSc (Hons) Sportsturf Science and Management



This three-year course focuses on turfgrass science and agronomy. It provides a comprehensive coverage of the science, management and technology associated with sportsturf. Current research is applied to develop a strategic approach to the management of all sportsturf surface types, including the best sportsturf surfaces often associated with world class locations.

Subjects studied include plant biology and soil science, turfgrass: growth and development, cultural practices in sportsturf (turfgrass establishment, growth and development), environmental management, applied soil technology and construction, irrigation and drainage. Additional modules cover sportsturf mechanisation and machinery, plant physiology, business management, principles of ecology, sports turf technology and data handling. A focus is also given to the pests, diseases and weeds that affect sportsturf performance.

In year three students undertake a major research project related to their chosen specialist area of either agronomy or sportsturf management. This is supplemented by additional modules in rootzone technology, plant science and biotechnology, sportsturf contract specifications and professional practice and consultancy.

The course aims to develop transferable and personal skills that are vitally important for gaining successful employment at management level in the industry. These include communication, time management, work prioritisation, critical analysis and report writing. Successful completion of the degree programme will lead to employment opportunities throughout the world – careers that combine high levels of educational understanding alongside excellent practical experience.

Students who have successfully completed the Foundation Degree in Sportsturf can progress directly to the final year of the degree programme. (This is studied over two years for part-time online students.)

### Course Details

**Duration**  
3 years full-time.

**UCAS Code**  
CN62.

**Entry Requirements**  
A minimum of 104 UCAS tariff points. See pages 18-19 for more information.

**Assessment**  
Assignments, presentations, report writing, case studies, final examinations.

**Progression**  
Masters Degree or Doctorate.

**Career Opportunities**  
Research and Development, Sportsturf Agronomist/Consultant, Golf Course and Sportsground Management, Educational Lecturer, Technical Support, Industry Sales and Marketing.

# Sportsturf

## MA Sustainable Golf Course Management



This is the only masters programme in Europe that is dedicated to sustainability in golf course management. This ground-breaking course will develop students' existing expertise, to provide a comprehensive portfolio of knowledge and skills in sustainability and resource efficiency, performance and quality, agronomic development, policies and strategic planning that is required for senior positions in the industry.

This course develops students' critical and analytical thinking to enable implementation of effective and efficient management practices. The MA will encourage debate and critical evaluation within an environment that develops holistic understanding of international issues.

The first year modules cover the theoretical perspectives of sustainability (economic, social and environmental issues), the management of performance and quality (customer expectations and demands) and contemporary agronomic research and development.

Second year modules focus on resource efficiency and management (including physical, financial and human resources), golf course policy and strategic planning (the importance of managing and planning structural and physical developments) and research methodology and design (philosophies and process, advanced data organisation, presentation, dissemination and problem solving).

The final year dissertation is a triple module and allows students to design and conduct a substantial piece of independent, supervised research in the field of sustainable sportsturf management.

### Course Details

**Duration**  
3 years part-time online.

**UCAS Code**  
Not required – please apply directly to the College via the Myerscough website.

**Entry Requirements**  
Successful completion of a relevant Honours Degree, with a minimum 2:2 classification or relevant professional qualifications and experience.

**Assessment**  
Assignments, dissertation, essays, presentations and reports.

**Progression**  
PhD.

**Career Opportunities**  
Golf Course Manager, Consultant, Education, Research, management position within leading industry bodies and organisations.

## R&A Scholarship Scheme

Sportsturf staff and students on a study tour to St Andrews, organised by the R&A. Their scholarship scheme provides unique benefits and additional financial support to many Myerscough students looking to develop careers in Greenkeeping and Golf Course Management.



## The Ohio International Programme

For more than 25 years Myerscough College has worked closely with Ohio State University. The Ohio International Programme has enabled many Myerscough sportsturf students to gain significant golf course experience in the USA on a range of prestigious courses, enhancing their future career prospects.

It is a structured and managed programme which includes:

- Warm and Cool Season placement opportunities.
- Assistance with travel plans, visas and insurance.
- Full briefing on arrival in USA and staff support.
- The possibility to take online turf classes with The Ohio State University covering warm and cool season grasses.

Sportsturf student Josh Webber on placement at the 37th Ryder Cup at Valhalla Golf Club, Kentucky. Pictured with Course Superintendent Mark Wilson.





**Myerscough Ventures was established in 1998 as the commercial arm of the College.**

It focuses on providing high quality products, services and facilities to the public whilst at the same time providing a unique educational and training environment for our students.



# Myerscough Ventures



- **Plant World** – retail garden centre; floristry shop; tree, shrub and houseplant nursery; the Garden House incorporating information and refreshments and Myerscough Gardens.
- **Stumble Inn** – the student pub and social venue, fully-licensed for a wide range of social events and celebrations. Available at the weekend for external bookings.
- **Catering** – restaurant facilities at Myerscough and franchises off campus at Croxteth Park, Liverpool.
- **Mini market** – offering a wide range of produce including groceries, confectionery and stationery items.
- **Farms** – dairy and sheep at Lodge Farm, Lee Farm and Light Ash Farm.
- **Accommodation** - 650 bed spaces available outside term-time.

As well as generating additional commercial income for the College, the Ventures activity provides exceptional facilities for students in two ways. Firstly, through work experience and employment, they can gain valuable training in retail and business. Secondly, a financial contribution is made to the College from the income generated by the Ventures to invest in additional educational resources. This serves to significantly develop the day-to-day educational provision of the College as a whole and therefore enhances the student experience of education and training.

When you visit the College please take time to visit one of our Ventures and take part in the Myerscough experience. All are open to the public and there's plenty to see and do.

For more information on any Ventures please contact the Venture Co-ordinator on **01995 642284** or visit the College website.



## My college campus

For a more detailed aerial perspective of the campus take a look at Google Maps and zoom in on the satellite view of PR3 0RY <http://maps.google.co.uk>

### Key to map

1 Reception (and ATM Cash Machine)	13 Accommodation Office	26 Bus Stops	39 Engineering Centre
2 Fitzherbert Brockholes Building	14 Bowland Suite	27 Fledglings Nursery (Childcare)	40 Motorsports Unit
3 Library	15 Mini Market	28 Garden House Café	41 Animal Academy
4 Estates Office	16 Golf Course	29 The Plant Centre at Plant World	42 Farriery & Forge
5 Laboratories	17 Astroturf & 3G Sports Pitches	30 Ornamental Kitchen Gardens	43 Veterinary Nursing
6 Hutton Building	18 Changing Rooms	31 Myerscough Gardens	44 Arena Café Bar
7 The Core - Student Advice Centre	19 Turf Technology Unit	32 Brock Meadow Countryside Area	45 International Equestrian Arena
8 Winmarleigh Building (Classrooms)	20 Sports Academy, including the Golf Academy & Shop	33 Landscape Construction Unit	46 Equine Centre & Indoor School
9 Administration Building and Finance Office	21 Putting Green	34 Rural Skills Centre	47 Outdoor Riding Schools
10 Lecture Theatre	22 Student Golf Academy	35 Production Glasshouses	48 Stables
11 Student Hub	23 Higher Education Centre	36 Floristry Unit / Office & Photography Studio	49 The National Arboricultural Centre
12 Richmond's Restaurant	24 Staff Houses	37 Foundation Learning Centre	50 Stumble Inn
	25 Rural Business Centre	38 Motorcycle Centre	51 Forge Workshop

# My notes

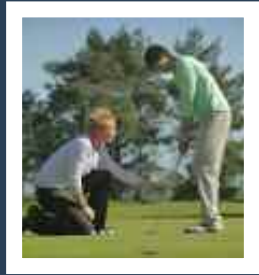


Myerscough College intends that all students and staff enjoy equality of opportunity and shall not be disadvantaged by any condition or requirement which cannot be shown to be justified. This Higher Education prospectus was compiled in September 2016 and every care has been taken to ensure that the information contained therein is accurate at the time of printing. The course programme is subject to continuing development and changes of circumstances may necessitate cancellation of courses or alteration to the programme of courses, course location, course content, fees and other matters. The College cannot guarantee to provide any course if circumstances beyond the control of the College interfere with its ability to provide that course. In such circumstances the College will take reasonable steps to minimise any disruption. The College reserves the right to make changes at any time, before or after a student's admission to a course. As much notice will be given of any such changes but the College cannot accept liability arising out of or in connection with them.



# My course index

Agriculture	28-29
Agricultural Crop Science	30
Agricultural Livestock Science	30
Agricultural Machinery Engineering	88-89
Agronomy	31
Animal Behaviour and Welfare	38
Animal Conservation Science	39
Arboriculture	46
Arboriculture and Urban Forestry	46-47
Basketball Coaching	83
Canine Studies	39
Cricket Coaching	71
Ecology and Conservation Management	34
Equestrian Management and Development	50
Equestrian Practice and Technology	50
Equine Science	52-53
Equine Science in Industry	51
Fariery	57
Professional Floristry and Floral Design	64
Football Coaching	75
Golf Coaching and Performance	79, 81
Golf Management	79, 80, 81
Health and Personal Training	68
Horticulture	60
Horticulture Science and Management	61
Integrated Crop Management	31
Motorsport Competition Car Technology	92-93
Motorsport Management and Logistics	92-93
Location Photography	95
Rugby Coaching	85
Rural Resource Management	34
Sport and Exercise Science	69
Sports Coaching	68
Sportsturf	98
Sportsturf Science and Management	98
Sustainable Golf Course Management	99
Clinical Veterinary Nursing	43
Veterinary Nursing	42-43
Welfare of Animals	38



# Choose Myerscough

## Make us your number one choice!

- Associate School partnership with the University of Central Lancashire.
- £20 million campus development and expansion programme.
- 95%+ student satisfaction with teaching, guidance and support.
- QAA Higher Education Review in May 2014 highlighted two commendations and 10 areas of good practice – one of the best reports in the country.
- Superb employment prospects. 98% of students in employment or study six months after graduation.
- National centre of sporting excellence in Football, Rugby, Golf, Cricket and Basketball.
- Gold medal winning gardens designed at RHS Chelsea and Southport Flower Show.
- 2016 National Student Survey satisfaction outcomes above the sector average in all areas.
- Farmers Weekly top-ten centre for studying agriculture.
- High levels of student retention and achievement, combined with high grades for Myerscough graduates.
- Triple winners at British Florist Association Annual Awards.
- The UK's leading college for applied research in plant science, animal welfare and sports performance, with 29 research publications in 2015-16.



Myerscough  
College

[www.myerscough.ac.uk](http://www.myerscough.ac.uk)

Myerscough College,  
Bilsborrow, Preston.  
Lancashire PR3 0RY  
Tel: 01995 642222 Fax: 01995 642333  
Email: [enquiries@myerscough.ac.uk](mailto:enquiries@myerscough.ac.uk)

Course Enquiries 0800 652 5592



@myerscoughcoll



myerscoughcoll



MyerscoughVideo2